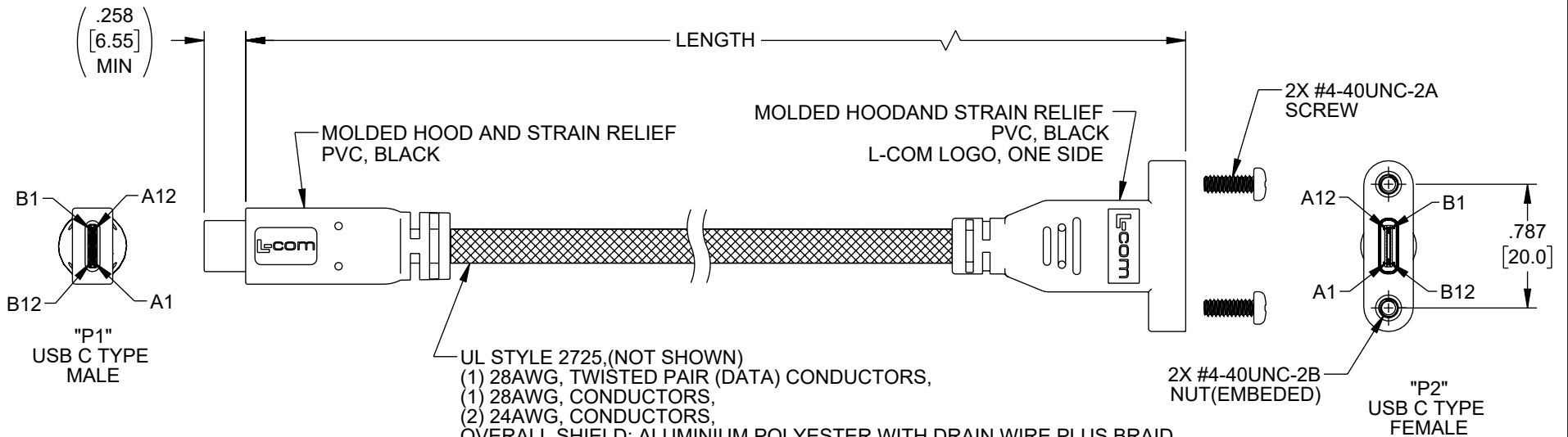
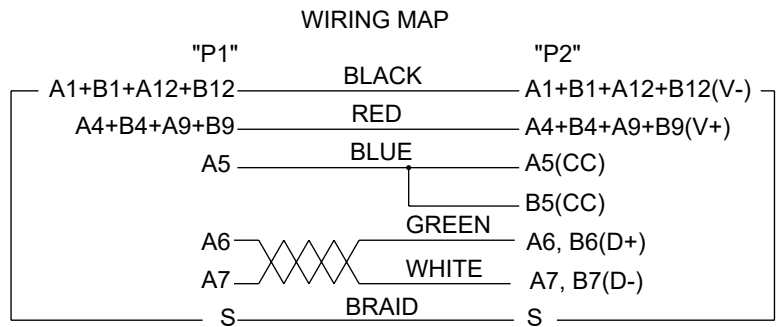
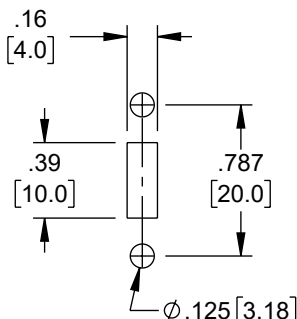


REVISION					
ZONE	REV	DESCRIPTION	DATE	CHANGED BY	APPROVED
	D	ECO-13923	10/10/2024	KDANG	DUSTING



UL STYLE 2725 (NOT SHOWN)
 (1) 28AWG, TWISTED PAIR (DATA) CONDUCTORS,
 (1) 28AWG, CONDUCTORS,
 (2) 24AWG, CONDUCTORS,
 OVERALL SHIELD: ALUMINIUM POLYESTER WITH DRAIN WIRE PLUS BRAID.
 OUTER JACKET: PVC, BLACK. NOM. DIA: .185" [4.7mm]
 FLEXIBLE MESH SLEEVING, BLACK

PART NUMBER	LENGTH	
	METERS	FEET
U3A00057-03M	0.3	0.98
U3A00057-05M	0.5	1.64
U3A00057-1M	1.0	3.28
U3A00057-2M	2.0	6.56
U3A00057-3M	3.0	9.84



NOTES:

- CABLE ASSEMBLY SHALL BE TESTED FOR CONTINUITY. VOLTAGE TEST: DC 300V 10ms; INSULATION RESISTANCE: 10.0M OHM/MIN; CONDUCTANCE RESISTANCE: 5.0 OHM/MAX.
 - COMPONENT SHALL BE INDIVIDUALLY PACKAGED IN ACCORDANCE WITH L-COM SPECIFICATION LSP-010.
- REGULATORY COMPLIANCE:
 EU RoHS DIRECTIVE (MOST RECENT RELEASED VERSION)

RECOMMENDED PANEL CUTOUT

UNLESS OTHERWISE SPECIFIED LEADING DIMENSIONS ARE INCHES DIMENSIONS IN [] ARE MILLIMETERS TOLERANCES: .X = ±.2 [5] FRACTIONS ± 1/32 .XX = ±.02 [0.5] ANGLES ± 1° .XXX = ±.005 [0.13]		 an INFINIT@ brand Website: www.L-com.com Phone: 1.800.341.5266 1.978.682.6936		 INTERPRET ALL DIMENSIONS AND TOLERANCES PER ASME Y14.5 SCALE: NONE SHEET: 1 OF 1	
CABLE LENGTH TOLERANCES: ≤12 [305] = +1 [25] / -0 >12 [305] ≤ 60 [1524] = +2 [51] / -0 >60 [1524] ≤ 120 [3048] = +4 [102] / -0 >120 [3048] ≤ 300 [7620] = +6 [152] / -0 >300 [7620] = +5% / -0		DESCRIPTION <h3>CA USB-C PNL/USB-CM</h3>			
SIZE	CAGE CODE	DRAWN BY	ITEM NO.	REV	
A	43321	JYOU	U3A00057	D	

THE INFORMATION CONTAINED IN THIS DRAWING IS THE SOLE PROPERTY OF INFINITE ELECTRONICS, INC. ANY REPRODUCTION IN PART OR WHOLE WITHOUT THE WRITTEN PERMISSION OF INFINITE ELECTRONICS, INC. IS PROHIBITED. THESE COMMODITIES, TECHNOLOGY OR SOFTWARE WERE EXPORTED FROM THE UNITED STATES IN ACCORDANCE WITH THE EXPORT ADMINISTRATION REGULATIONS. DIVERSION CONTRARY TO U.S. LAW PROHIBITED.