

6

5

4

3

2

1

REVISION

ZONE	REV	DESCRIPTION	DATE	CHANGED BY	APPROVED
	B	ECO-14578	05/21/2025	KGLEBOVA	GUTTADAURO

F

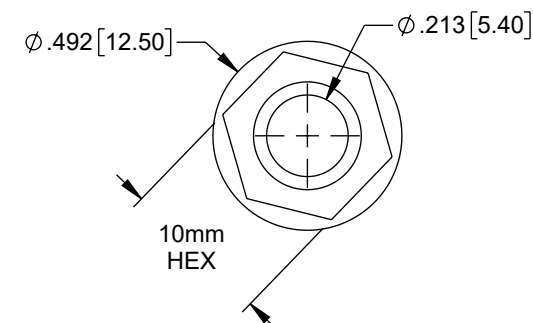
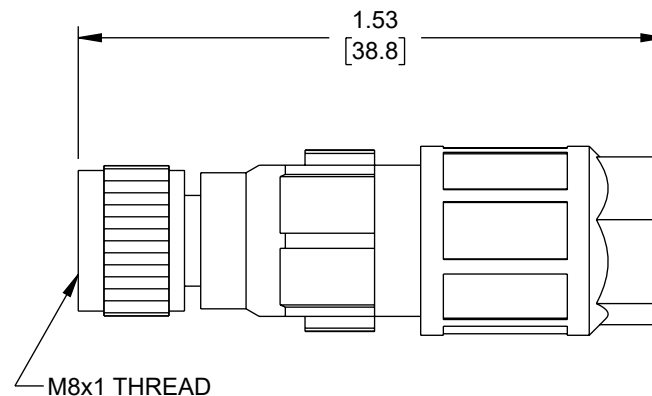
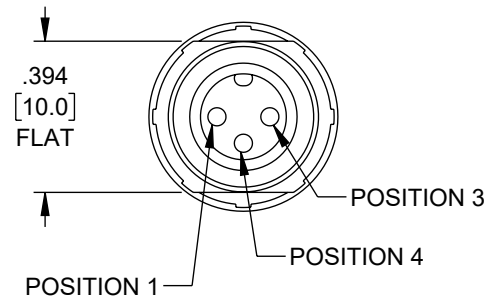
E

D

C

B

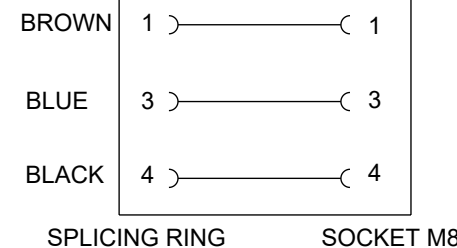
A



NOTES:

1. STANDARDS: DIN EN 61076-2-104 (M8)
2. CONNECTIONS: IDC TERMINAL
3. CONTACT CARRIER MATERIAL: TPU
4. CONTACT MATERIAL: COPPER ALLOY, GOLD PLATED
5. GASKET MATERIAL: NBR
6. TEMPERATURE RANGE: -25° C TO +80° C
7. OPERATING VOLTAGE: 48V AC/60 V DC
8. NUMBER OF POLES: 3
9. CONTACT RESISTANCE: $\leq 10\text{m}\Omega$
10. ISOLATION RESISTANCE: $\geq 100\text{M}\Omega$
11. CABLE SEALING RANGE: 2.5 - 5.0 mm
12. OUTER WIRE: 1.1 - 1.55 mm
13. PROTECTION: IP65 AND IP67, WHEN MATED
14. LOCKING MATERIAL: ZINC DIE CAST, MATTE NICKEL PLATED
15. MATING CYCLES: ≥ 100
16. ALL DIMENSIONS ARE FOR REFERENCE ONLY.
17. COMPONENT SHALL BE INDIVIDUALLY PACKAGE.

WIRING DIAGRAM



THE INFORMATION CONTAINED IN THIS DRAWING IS THE SOLE PROPERTY OF INFINITE ELECTRONICS, INC. ANY REPRODUCTION IN PART OR WHOLE WITHOUT THE WRITTEN PERMISSION OF INFINITE ELECTRONICS, INC. IS PROHIBITED. THESE COMMODITIES, TECHNOLOGY OR SOFTWARE WERE EXPORTED FROM THE UNITED STATES IN ACCORDANCE WITH THE EXPORT ADMINISTRATION REGULATIONS. DIVERSION CONTRARY TO U.S. LAW PROHIBITED.

6

5

4

3

2

1

UNLESS OTHERWISE SPECIFIED
LEADING DIMENSIONS ARE INCHES
DIMENSIONS IN [] ARE MILLIMETERS

TOLERANCES:

X = ± 2 [5]	FRACTIONS
.XX = ± 0.02 [0.5]	$\pm 1/32$
.XXX = ± 0.005 [0.13]	ANGLES $\pm 1^\circ$

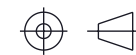
CABLE LENGTH TOLERANCES:

≤ 12 [305]	≤ 12 [305]	≤ 12 [305]
>12 [305]	≤ 60 [1524]	≤ 60 [1524]
>60 [1524]	≤ 120 [3048]	≤ 120 [3048]
>120 [3048]	≤ 300 [7620]	≤ 300 [7620]
>300 [7620]	≤ 300 [7620]	≤ 300 [7620]

ALL DIMENSIONS ARE FOR REFERENCE ONLY
AND SUBJECT TO CHANGE WITHOUT NOTICE.
UN-DIMENSIONED/NON-CRITICAL FEATURES
MAY VARY IN SIZE AND LOCATION
COLORS MAY VARY

L-com
an INFINIT@ brand

Website: www.L-com.com
Phone: 1.800.341.5266 | 1.978.682.6936



INTERPRET ALL DIMENSIONS AND
TOLERANCES PER ASME Y14.5

SCALE	SHEET
NONE	1 OF 1

DESCRIPTION				
M8 3P-F FIELD TERM 24-20AWG				
SIZE	CAGE CODE	DRAWN BY	ITEM NO.	REV
A	43321	DFRISIELLO	M8FTQ3F	B