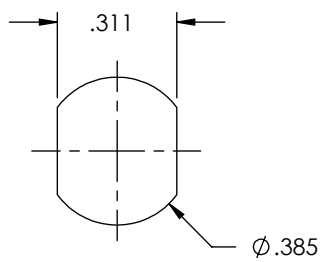
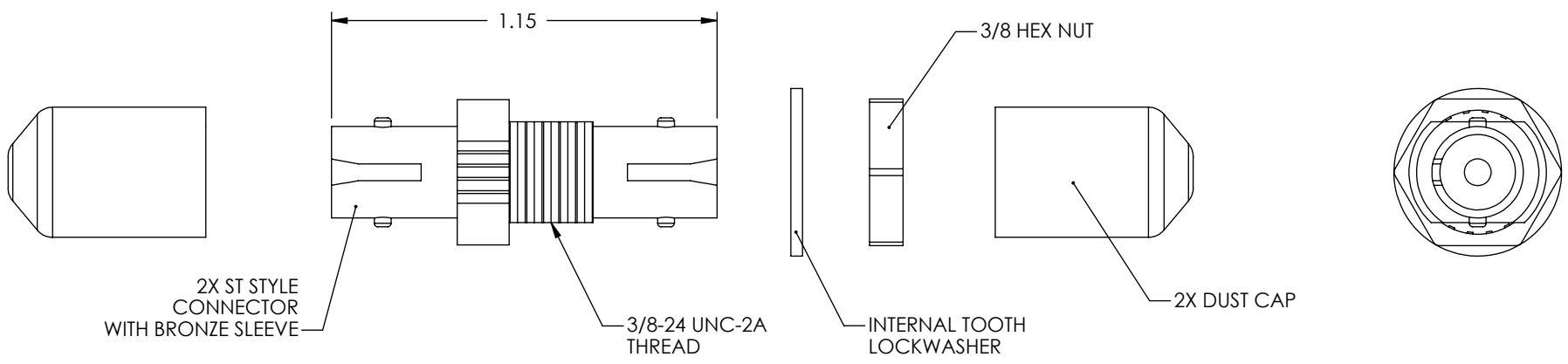


THE INFORMATION CONTAINED IN THIS DRAWING IS THE SOLE PROPERTY OF L-COM, INC. ANY REPRODUCTION IN PART OR WHOLE WITHOUT THE WRITTEN PERMISSION OF L-COM, INC. IS PROHIBITED.

REVISIONS			
REV	DESCRIPTION	DATE	APPROVED
A	RELEASED FOR PRODUCTION	12/28/00	MCCORMICK
B	ECN# 1605 ADDED COMPONENT SPECIFICATION	12/03/03	MCCORMICK
C	ECN# 2510: ADDED NOTES & UPDATED COMPONENT SPECIFICATIONS	08/09/06	MCCORMICK
D	ECN3733: ADDED PNL THKNESS. UPDATED FORMAT	12/01/08	D. PARHAM



RECOMMENDED PANEL HOLE

- NOTES:
1. INSERTION LOSS: 0.2dB MAX
  2. DURABILITY (500 MATINGS): 0.15 dB MAX INCREASE
  3. OPERATING TEMPERATURE: -40°C TO +80°C
  4. COUPLER BODY AND HARDWARE, NICKEL PLATED
  5. MAXIMUM PANEL THICKNESS: 0.140"

UNLESS OTHERWISE SPECIFIED, DIMENSIONS ARE IN INCHES [mm]	APPROVALS	DATE		45 BEECHWOOD DRIVE NORTH ANDOVER, MA 01845
	DRAWN BY C.MCCORMICK	12/28/2000		
OVERALL CABLE LENGTH TOLERANCE: ≤12 [305] = +1 [25] / -0 >12 [305] ≤60 [1524] = +2 [51] / -0 >60 [1524] ≤120 [3048] = +4 [102] / -0 >120 [3048] ≤300 [7620] = +6 [152] / -0 >300 [7620] = +5% / -0%	CHECKED BY D.PARHAM	01/12/2001	CATEGORY	
	APPROVED BY R.CARRICK	01/12/2001	FIBER OPTICS	
ALL OTHER DIMENSIONAL TOLERANCES: .X = .3 .XX = .15	CONFIGURATION DETAILS OF UNDIMENSIONED FEATURES MAY VARY		PRODUCT DESCRIPTION	
PROJECTION	COLOR VARIATIONS MAY OCCUR	SIZE <b>A</b>	FSCM NO. <b>43321</b>	DWG. NO. FOA-001
		SCALE: NONE	CAD FILE: FOA-001.SLDDRW	REV. <b>D</b>
				SHEET 1 OF 1