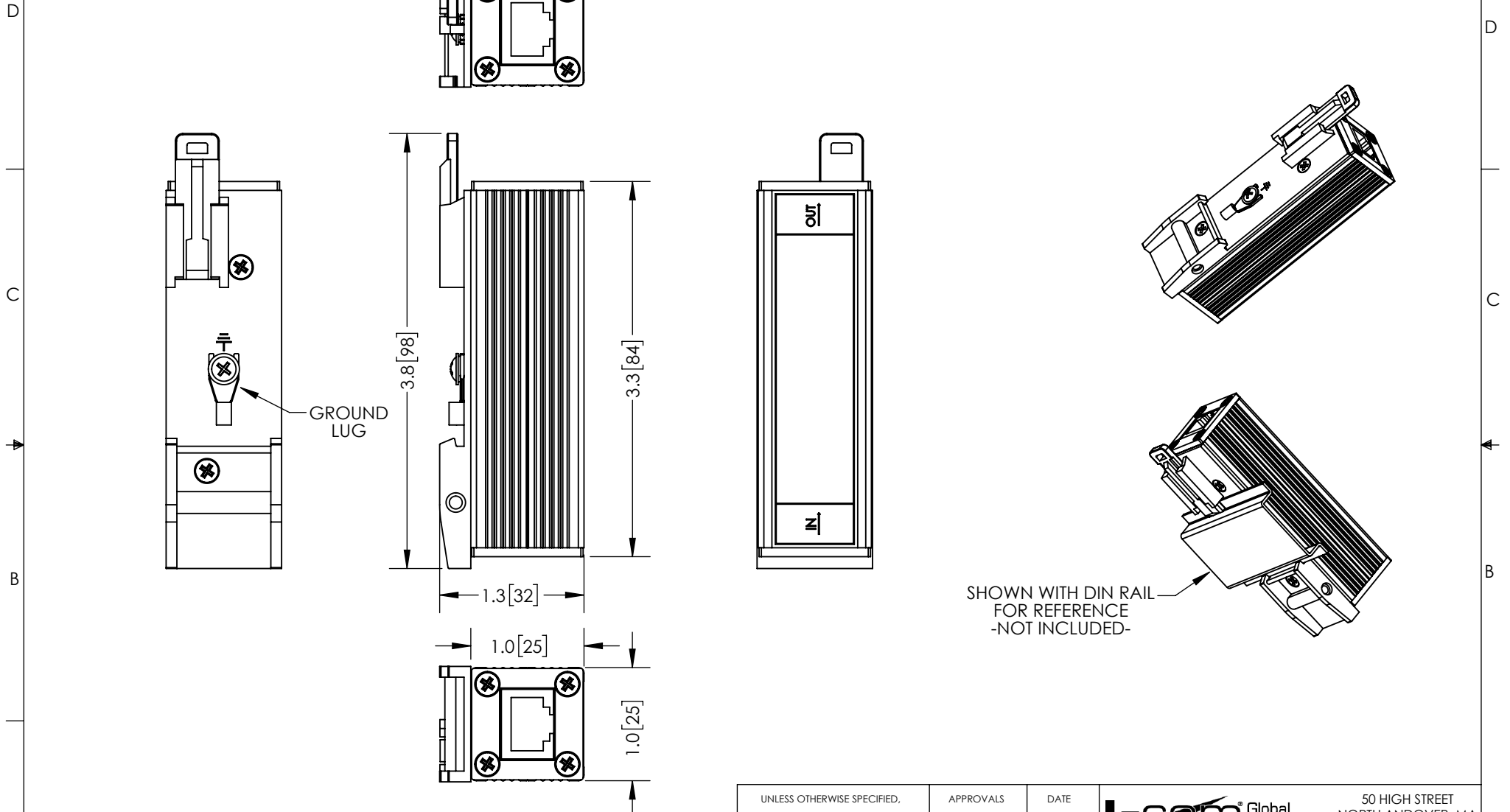


THE INFORMATION CONTAINED IN THIS DRAWING IS THE SOLE PROPERTY OF L-COM, INC. ANY REPRODUCTION IN PART OR WHOLE WITHOUT THE WRITTEN PERMISSION OF L-COM, INC. IS PROHIBITED.

REVISIONS			
REV	DESCRIPTION	DATE	APPROVED
A	INITIAL RELEASE	12/02/2013	BPUCHASKI
B	ECN 9740: ADD NOTE -ALL DIMENSIONS ARE FOR REFERENCE ONLY-	03/15/2019	BPUCHASKI



NOTES:
 PACKAGING:
 COMPONENT SHALL BE PACKAGED IN ACCORDANCE WITH L-COM SPEC PKG-00012

B - ALL DIMENSIONS ARE FOR REFERENCE ONLY-

UNLESS OTHERWISE SPECIFIED, DIMENSIONS ARE IN INCHES [mm] DIMENSIONAL TOLERANCES: .X = ±.1 [2.54] .XX = ±.01 [.25] .XXX = ±.005 [.13] ANGULAR TOLERANCES: ALL = ± 1°	APPROVALS	DATE	50 HIGH STREET NORTH ANDOVER, MA 01845	
	DRAWN BY BPUCHASKI	11/26/2013		
PROJECTION 	CHECKED BY P.PSEA	11/26/2013	CATEGORY LIGHTNING PROTECTOR	
	CONFIGURATION DETAILS OF UNDIMENSIONED FEATURES MAY VARY	PRODUCT DESCRIPTION 100Mbps INDOOR CAT5 DIN MOUNTED LIGHTNING PROTECTOR		
COLOR VARIATIONS MAY OCCUR	SIZE A	FSCM NO. 43321	DWG. NO. ELPD-CAT5	REV. B
SCALE: NONE		CAD FILE: ELPD-CAT5.SLDDRW		SHEET 1 OF 1