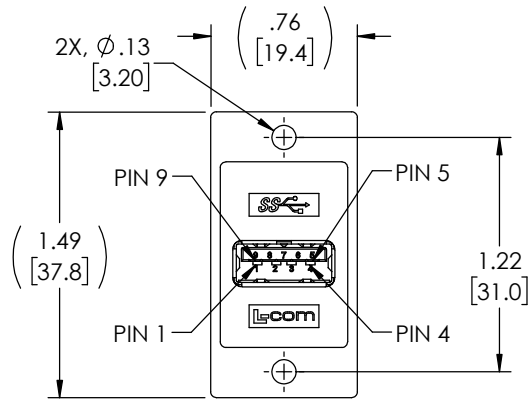


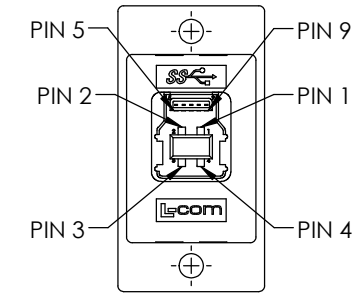
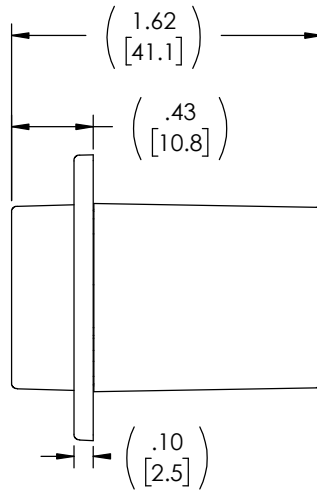
THE INFORMATION CONTAINED IN THIS DRAWING IS THE SOLE PROPERTY OF L-COM, INC. ANY REPRODUCTION IN PART OR WHOLE WITHOUT THE WRITTEN PERMISSION OF L-COM, INC. IS PROHIBITED.

REVISIONS			
REV	DESCRIPTION	DATE	APPROVED
A	INITIAL RELEASE	09/14/2020	D.GUTTADAURO

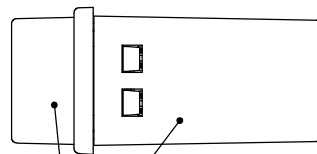
D



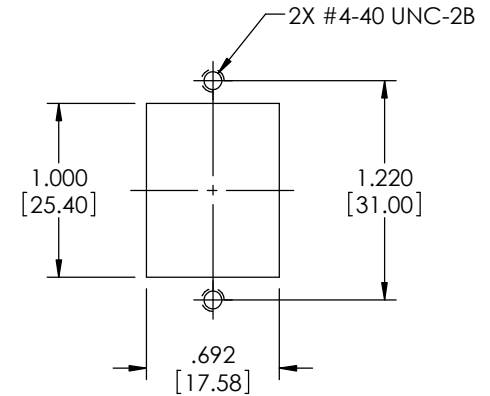
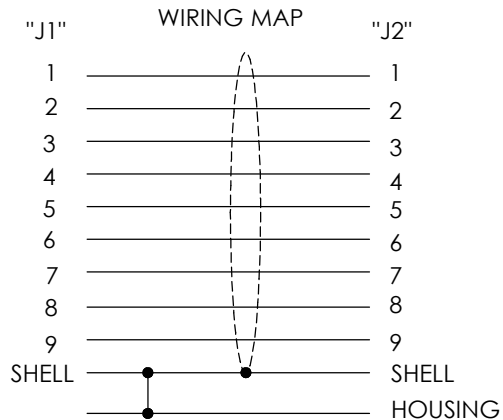
"J1"  
USB 3.0 TYPE "A"  
FEMALE CONNECTOR  
30u" GOLD PLATED CONTACTS  
NICKEL PLATED SHELL



"J2"  
USB 3.0 TYPE "B"  
FEMALE CONNECTOR  
30u" GOLD PLATED CONTACTS  
NICKEL PLATED SHELL




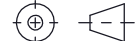
ABS COUPLER SHIELDED HOUSING,  
FINISH: CHROME



RECOMMENDED  
PANEL CUTOUT

**NOTES:**

- RATING:  
CURRENT: 1.8A (P1 & P4 CONTACTS); 0.25A(OTHER CONTACTS)  
VOLTAGE: 30V max.  
OPERATING TEMPERATURE: -10°C TO +70°C.
- COUPLER SHALL BE TESTED FOR CONTINUITY.
- COUPLER SHALL BE INDIVIDUALLY PACKAGED IN ACCORDANCE WITH L-COM PACKAGING SPEC PS-0031.

UNLESS OTHERWISE SPECIFIED, DIMENSIONS ARE IN INCHES [mm] OVERALL CABLE LENGTH TOLERANCE: ≤12 [305] ≤+1 [25] / -0 >12 [305] ≤60 [1524] = +2 [51] / -0 >60 [1524] ≤120 [3048] = +4 [102] / -0 >120 [3048] ≤300 [7620] = +6 [152] / -0 >300 [7620] = +5% / -0 ALL OTHER DIMENSIONAL TOLERANCES: .X = ± .2 [5]      FRACTIONS .XX = ± .02 [5]    ± 1/32 .XXX = ± .005 [13]    ANGLES ± 1°	APPROVALS	DATE	 an INFINITI® brand	50 High Street, West Mill, North Andover, MA 01845 USA. Phone: 1.800.341.5266 1.978.682.6936
	DRAWN BY B.ZHANG	08/19/2020		
THIRD-ANGLE PROJECTION 	CHECKED BY D.CONTROL	08/19/2020	CATEGORY USB	
	APPROVED BY D.GUTTADAURO	08/19/2020	PRODUCT DESCRIPTION USB3.0 COUPLER PNL MNT AF-BF SHIELDED	
	CONFIGURATION DETAILS OF UNDIMENSIONED FEATURES MAY VARY		SIZE <b>A</b>	CAGE CODE <b>43321</b>
	COLOR VARIATIONS MAY OCCUR		DWG. NO. ECF504-3AB-S	REV. <b>A</b>
			SCALE: NONE	CAD FILE: ECF504-3AB-S.SLDDRW
			SHEET 1 OF 1	