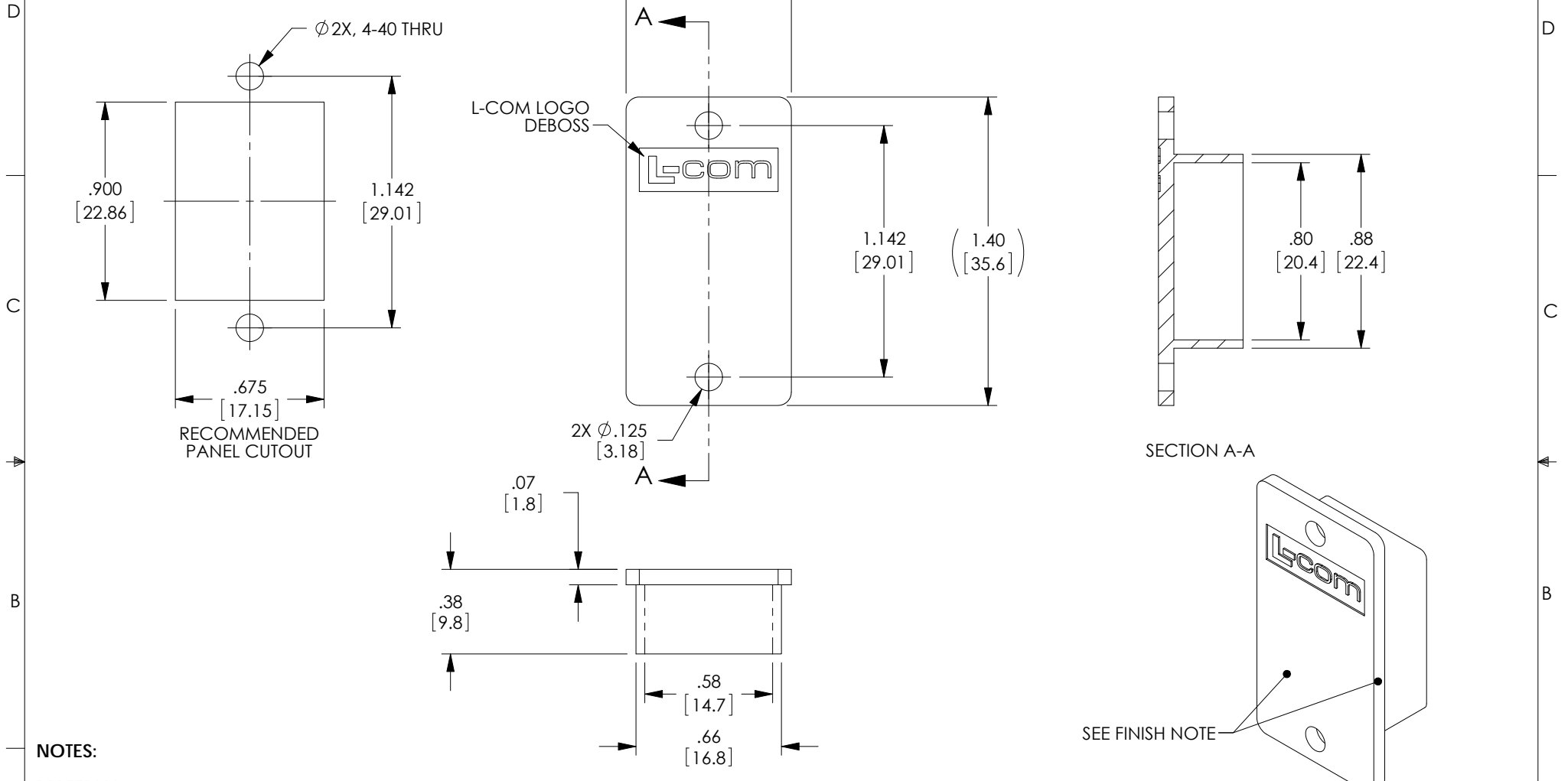


THE INFORMATION CONTAINED IN THIS DRAWING IS THE SOLE PROPERTY OF L-COM, INC. ANY REPRODUCTION IN PART OR WHOLE WITHOUT THE WRITTEN PERMISSION OF L-COM, INC. IS PROHIBITED.

REVISIONS			
REV	DESCRIPTION	DATE	APPROVED
A	INITIAL RELEASE	07/07/17	J.LABOY



NOTES:
MATERIAL:
 HOUSING: ABS, UL94V-0
 FINISH: (FRONT SURFACE AND EDGES) CHARMILLES #27, COLOR, BLACK

MISCELLANEOUS:
 2X, #4-40 UNC-2A PAN HEAD SCREWS, INCLUDED.
 OPERATING TEMPERATURE RANGE: -10° C TO +70° C.
 ADAPTER SHALL BE INDIVIDUALLY PACKAGED IN ACCORDANCE WITH L-COM SPECIFICATION PS-0031.

REGULATORY COMPLIANCE:
 CE2011/65/EU(ROHS DIRECTIVE)

UNLESS OTHERWISE SPECIFIED, DIMENSIONS ARE IN INCHES [mm] OVERALL CABLE LENGTH TOLERANCE: ≤12 [305] = +1 [25] / -0 >12 [305] ≤60 [1524] = +2 [51] / -0 >60 [1524] ≤120 [3048] = +4 [102] / -0 >120 [3048] ≤300 [7620] = +6 [152] / -0 >300 [7620] = +5% / -0% ALL OTHER DIMENSIONAL TOLERANCES: .X = ±.2 [5.08] .XX = ±.02 [51] .XXX = ±.005 [13]	APPROVALS DRAWN BY D.CUI	DATE 07/03/17	50 HIGH STREET NORTH ANDOVER, MA 01845		
	CHECKED BY S.PAN	DATE 07/03/17		CATEGORY TELECOM/MODULAR	
	APPROVED BY D.GUITADAURO	DATE 07/03/17	PRODUCT DESCRIPTION CPLR PNL MNT BLANK FLAT FRONT		
	PROJECTION 	CONFIGURATION DETAILS OF UNDIMENSIONED FEATURES MAY VARY COLOR VARIATIONS MAY OCCUR ECF-SK	SIZE A	FSCM NO. 43321	DWG. NO. ECF-BLANK

SECTION A-A

SEE FINISH NOTE

