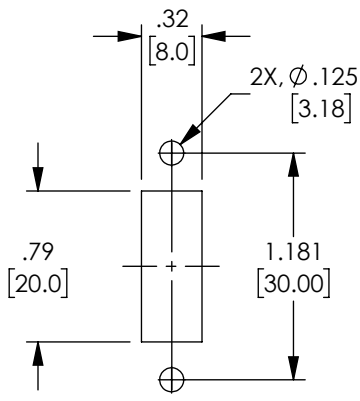
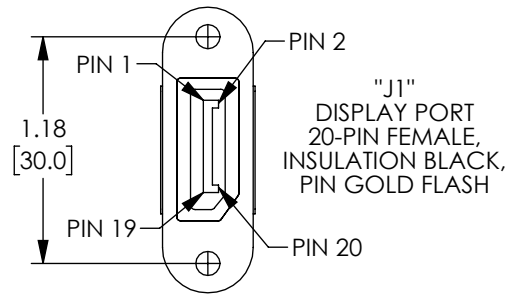
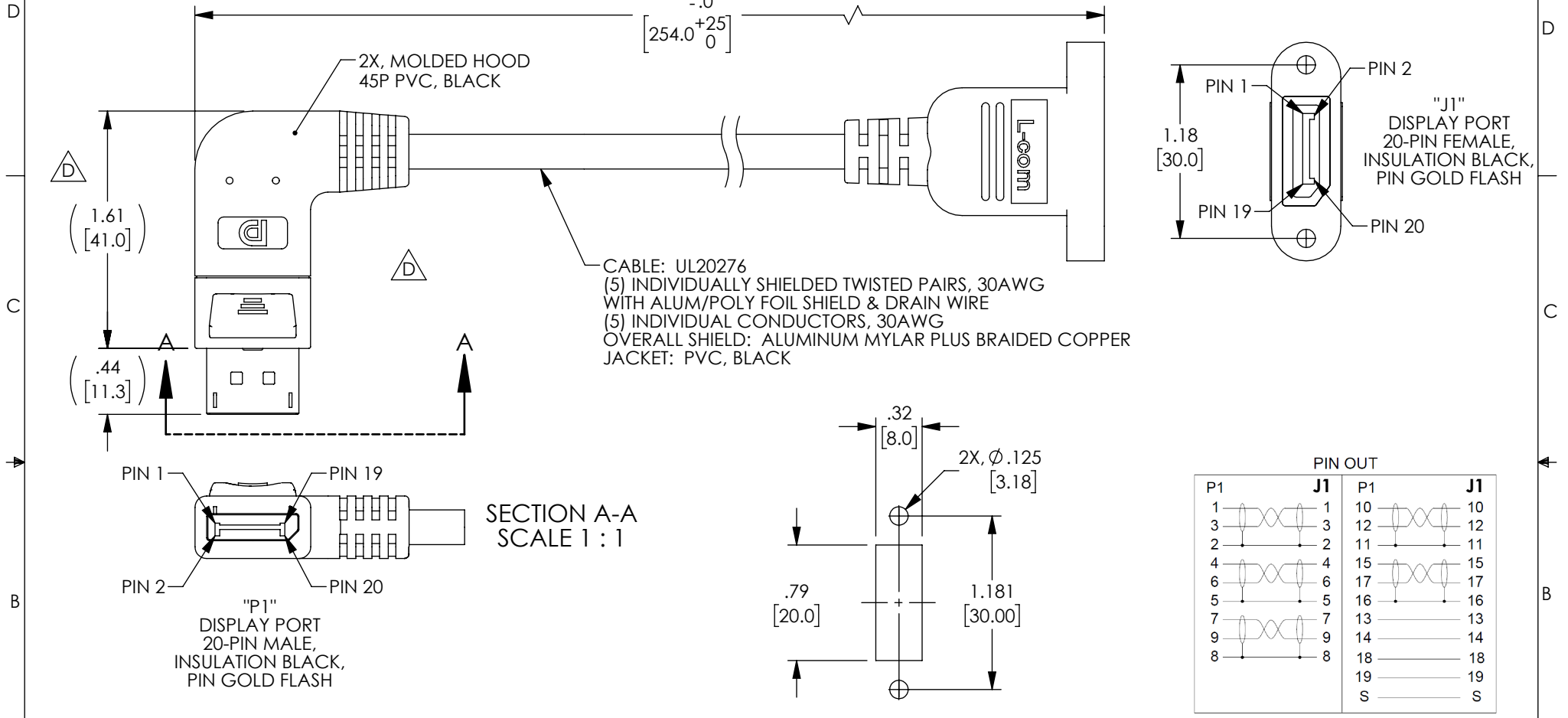


THE INFORMATION CONTAINED IN THIS DRAWING IS THE SOLE PROPERTY OF L-COM, INC. ANY REPRODUCTION IN PART OR WHOLE WITHOUT THE WRITTEN PERMISSION OF L-COM, INC. IS PROHIBITED.

REVISIONS			
REV	DESCRIPTION	DATE	APPROVED
D	ECN 11679: REVISED 3D MODEL PER ASSEMBLY	02/17/2022	GUTTADAURO



PIN OUT			
P1	J1	P1	J1
1	1	10	10
3	3	12	12
2	2	11	11
4	4	15	15
6	6	17	17
5	5	16	16
7	7	13	13
9	9	14	14
8	8	18	18
		19	19
		S	S

NOTES:

ELECTRICAL PROPERTIES:


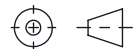
- CABLE ASSEMBLY SHALL BE TESTED FOR CONTINUITY
- VOLTAGE TEST: DC 300V 10ms
INSULATION RESISTANCE: 5.0M ohm/min
CONDUCTANCE RESISTANCE: 5.0 ohm/mx

MISCELLANEOUS:

MOUNTING HARDWARE INCLUDED. 2X, 4-40 UNC-2A x 3/8" LG PHILLIPS HEAD SCREW.
CABLE ASSEMBLY SHALL BE INDIVIDUALLY PACKAGED IN ACCORDANCE WITH L-COM SPECIFICATION PS-0031

REGULATORY COMPLIANCE:

EU RoHS DIRECTIVE (MOST RECENT RELEASED VERSION)

UNLESS OTHERWISE SPECIFIED, DIMENSIONS ARE IN INCHES [mm] OVERALL CABLE LENGTH TOLERANCE: ≤12 [305] = +1 [25] / -0 >12 [305] ≤60 [1524] = +2 [51] / -0 >60 [1524] ≤120 [3048] = +4 [102] / -0 >120 [3048] ≤300 [7620] = +6 [152] / -0 >300 [7620] = +5% / -0 ALL OTHER DIMENSIONAL TOLERANCES: .X = ± .2 [5] FRACTIONS ± 1/32 .XX = ± .02 [5] ANGLES ± 1° .XXX = ± .005 [1.3]	APPROVALS	DATE	 50 High Street, West Mill, North Andover, MA 01845 USA. Phone: 1.800.341.5266 1.978.682.6936	
	DRAWN BY RCLARK	04/26/2017		CATEGORY AUDIO/VIDEO
	CHECKED BY DFRISIELLO	04/27/2017		
	APPROVED BY BGATES	04/27/2017		
THIRD-ANGLE PROJECTION	CONFIGURATION DETAILS OF UNDIMENSIONED FEATURES MAY VARY	PRODUCT DESCRIPTION DP RA M TO PNL MNT DP F CABLE	SIZE A	
	COLOR VARIATIONS MAY OCCUR	CAGE CODE 43321	ITEM NO. DPA00001-010I	
		SCALE: NONE	SHEET 1 OF 1	