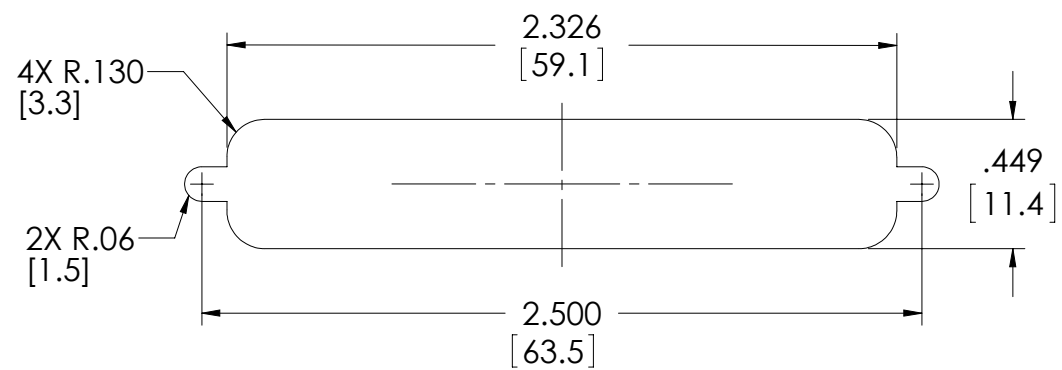


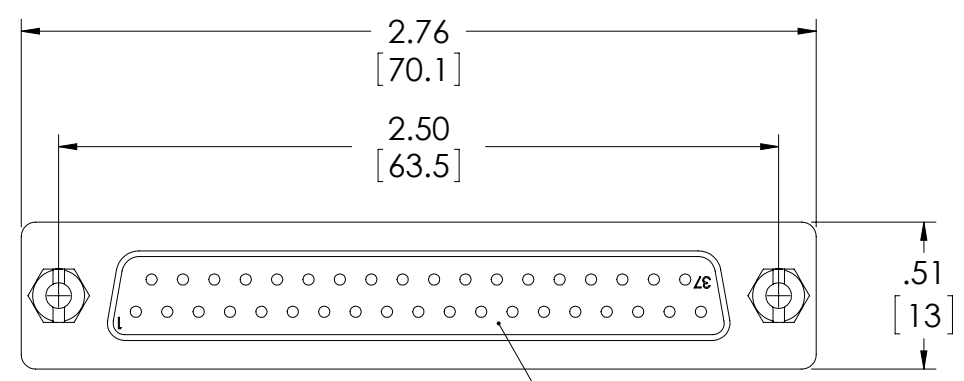
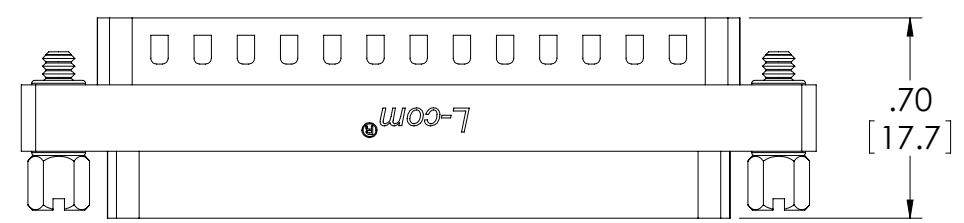
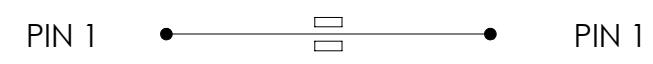
THE INFORMATION CONTAINED IN THIS DRAWING IS THE SOLE PROPERTY OF L-COM, INC. ANY REPRODUCTIONS IN PART OR WHOLE WITHOUT THE WRITTEN PERMISSION OF L-COM, INC. IS PROHIBITED.

REVISIONS			
REV	DESCRIPTION	DATE	CHANGED BY
F	ECN 7395: CHG'D TEXT TO 37 PIN FROM 9 PIN, ADDED ROHS/PACKAGING	4/21/14	D. CASTRO

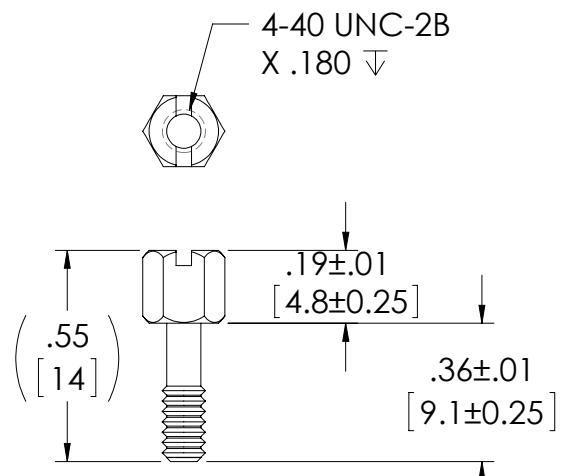


RECOMMENDED PANEL OPENING  
(MAX PANEL THICKNESS: 0.06")

ALL PINS CONNECTED STRAIGHT THROUGH  
FERRITE BLOCK AS SHOWN BELOW:



FEMALE, 37 PIN  
D-SUB CONNECTOR  
(J1)



JACKSCREW  
SPECIFICATION

NOTES:

- APPLICATION NOTES:  
ALL- METAL HOUSING PROVIDES 100% SHIELDING
- LABELING:  
PANTONE 2945 BLUE. "L-COM" FONT MyriaMM ITALIC.  
"EMI FILTER" FONT ARIAL BOLD, TEXT HEIGHTS; .085"  
TEXT COLOR: WHITE.
- SPECIFICATIONS:

**MATERIALS**  
SHELL: COLD ROLLED STEEL  
CONTACTS: BRASS  
INSULATOR: PBT (UL 94V-0 RATED)

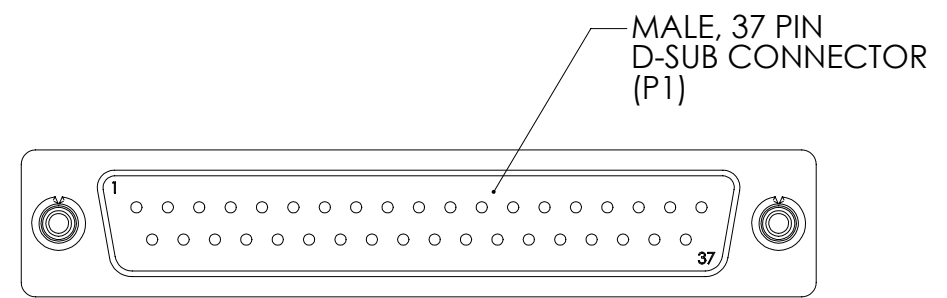
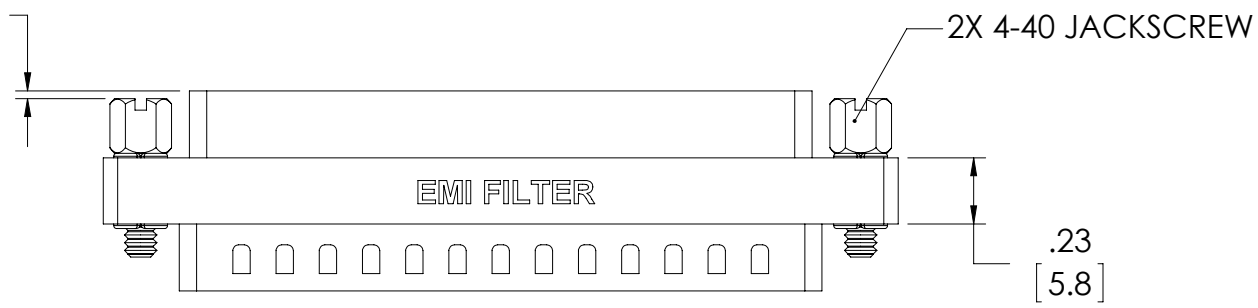
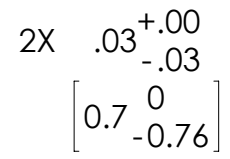
**FINISH**  
SHELL: TIN PLATED  
CONTACT: GOLD FLASH

**ELECTRICAL**  
CONTACT CURRENT RATING: 1.0 AMP MAX  
VOLTAGE RATING: 150 VAC (MAX)  
INSULATION RESISTANCE: 5000 MΩ @ 500 VDC  
CONTACT RESISTANCE: 15 mΩ (MAX)

**ENVIRONMENTAL**  
OPERATING TEMPERATURE RANGE: -55°C TO 105°C

4. COMPONENT SHALL BE INDIVIDUALLY PACKAGED IN  
ACCORDANCE WITH L-COM SPECIFICATION PS-0031.

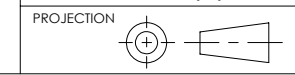
**REGULATORY COMPLIANCE:**  
CE2011/65/EU(RoHS DIRECTIVE)



MALE, 37 PIN  
D-SUB CONNECTOR  
(P1)



UNLESS OTHERWISE SPECIFIED,  
DIMENSIONS ARE IN INCHES [mm]  
OVERALL CABLE LENGTH TOLERANCE:  
≤12 [305] = +1 [25] / -0  
>12 [305] ≤60 [1524] = +2[51] / -0  
>60 [1524] ≤120 [3048] = +4 [102] / -0  
>120 [3048] ≤300 [7620] = +6 [152] / -0  
>300 [7620] = +5% / -0%  
ALL OTHER DIMENSIONAL TOLERANCES:  
.X = ±.2 [5.08]  
.XX = ±.02 [5.1]  
.XXX = ±.005 [1.3]



APPROVALS	DATE
DRAWN BY R.CARRICK	09/28/2002
CHECKED BY T.CLARK	09/28/2002
APPROVED BY D.PARHAM	09/28/2002

**L-com** Global Connectivity  
45 BEECHWOOD DRIVE  
NORTH ANDOVER, MA  
01845

CATEGORY D-SUBMINIATURE			
PRODUCT DESCRIPTION EMC FILTER, DB37 MALE / FEMALE			
SIZE <b>B</b>	FSCM NO. <b>43321</b>	DWG. NO. <b>DGF37MF</b>	REV. <b>F</b>
SCALE: 1.5:1		CAD FILE: DGF37MF.SLDDRW	
			SHEET 1 OF 1