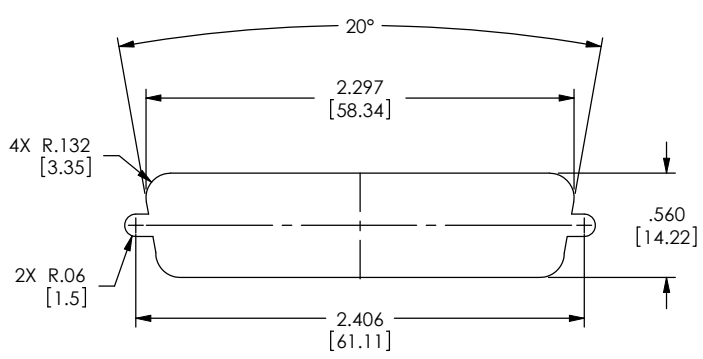


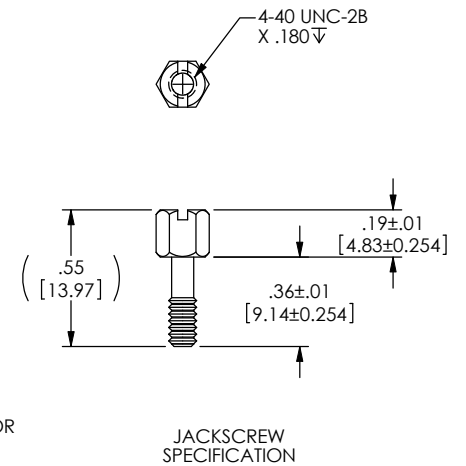
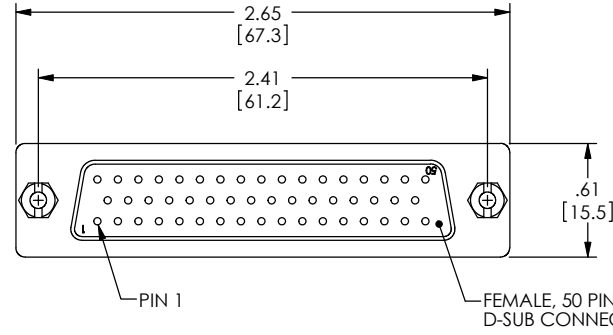
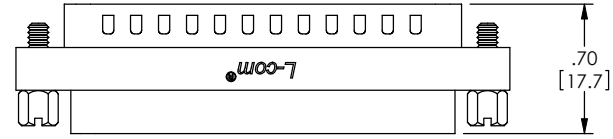
THE INFORMATION CONTAINED IN THIS DRAWING IS THE SOLE PROPERTY OF L-COM, INC. ANY REPRODUCTIONS IN PART OR WHOLE WITHOUT THE WRITTEN PERMISSION OF L-COM, INC. IS PROHIBITED.

REVISIONS			
REV	DESCRIPTION	DATE	CHANGED BY
F	ECN 99999: UPDATED DRAWING AND NEW FORMAT	2/8/10	D. FRISIELLO
G	ECN 5937: ADDED NOTE FOR PANEL MOUNTING	1/23/12	D. FRISIELLO

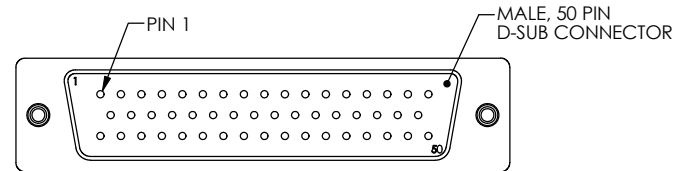
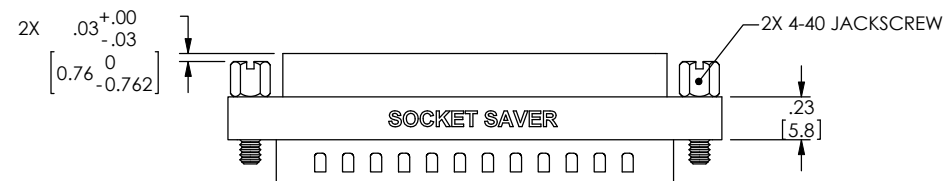


RECOMMENDED PANEL OPENING
(MAX PANEL THICKNESS: 0.06")

NOTE: DIFFERENT STANDOFFS AND JACK SCREWS ARE REQUIRED FOR PANEL MOUNTING. SEE WWW.L-COM.COM OR MASTER CATALOG FOR DETAILS.



NOTES:
MATERIAL:
 SHELL: STEEL
 CONTACTS: COPPER ALLOY
 HARDWARE: BRASS
 INSULATOR: PBT FIBER REINFORCED (UL94V-0 RATED)
FINISH:
 SHELL: TIN/NICKEL PLATED
 CONTACTS: GOLD FLASH PLATED, 1-5μ INCHES
 HARDWARE: NICKEL PLATED
ELECTRICAL:
 CURRENT RATING: 3 AMP
 INSULATION RESISTANCE: 1000 MΩ MIN @500 VDC
 DIELECTRIC WITHSTANDING VOLTAGE: 1000 VAC (FOR ONE MINUTE)
MISCELLANEOUS:
 OPERATING TEMPERATURE RANGE: -55°C TO +105°C.
 ALL CONTACTS WIRED STRAIGHT THROUGH.
 COMPONENT SHALL BE TESTED FOR CONTINUITY.



LABELING:
 PANTONE 2945 BLUE. "L-COM" FONT MyriaMM ITALIC.
 "SOCKET SAVER" FONT ARIAL BOLD, TEXT HEIGHTS; .085"
 TEXT COLOR; WHITE.
PACKAGING:
 COMPONENT SHALL BE INDIVIDUALLY PACKAGED IN ACCORDANCE WITH L-COM SPECIFICATION PS-0031.

RoHS Compliant ✓

UNLESS OTHERWISE SPECIFIED, DIMENSIONS ARE IN INCHES (mm)	APPROVALS	DATE
DIMENSIONAL TOLERANCES: .X = ±.1 .XX = ±.01 .XXX = ±.005 ANGULAR TOLERANCES: ALL = ±1°	DRAWN BY	09/28/2002
	CHECKED BY	09/28/2002
	APPROVED BY	09/28/2002
	CONFIGURATION DETAILS OF UNDIMENSIONED FEATURES MAY VARY	
PROJECTION	COLOR VARIATIONS MAY OCCUR	

L-com Global Connectivity		45 BEECHWOOD DRIVE NORTH ANDOVER, MA 01845	
CATEGORY: D-SUBMINIATURE			
PRODUCT DESCRIPTION: SOCKET SAVER, DB50 MALE/FEMALE			
SIZE: B	PSCM NO.: 43321	DWG. NO.: DGB50MF	REV.: G
SCALE: 2:1		CAD FILE: DGB50MF.SLDRAW	
			SHEET 1 OF 1