

6

5

4

3

2

1

F

E

D

C

B

A

F

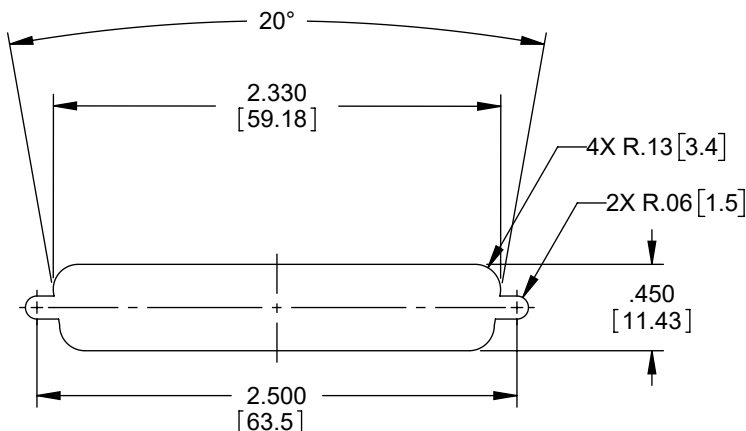
E

D

C

B

A



RECOMMENDED PANEL OPENING
(MAX PANEL THICKNESS: .06 [1.5])

NOTE: DIFFERENT STANDOFFS AND JACK SCREWS
ARE REQUIRED FOR PANEL MOUNTING.
SEE WWW.L-COM.COM OR MASTER CATALOG FOR DETAILS.

NOTES:

1. MATERIAL:

SHELL: STEEL
CONTACTS: COPPER ALLOY
HARDWARE: BRASS
INSULATOR: PBT, FIBER REINFORCED (UL94V-0 RATED)

2. FINISH:

SHELL: TIN/NICKEL PLATED
CONTACTS: GOLD FLASH PLATED, 1-5μ INCHES
HARDWARE: NICKEL PLATED

3. ELECTRICAL:

CURRENT RATING: 3 AMP
INSULATION RESISTANCE: 1000 MΩ MIN @500 VDC
DIELECTRIC WITHSTANDING VOLTAGE: 1000 VAC (FOR ONE MINUTE)

4. MISCELLANEOUS:

OPERATING TEMPERATURE RANGE: -20°C TO +80°C.
ALL CONTACTS WIRED STRAIGHT THROUGH.

5. COMPONENT SHALL BE TESTED FOR CONTINUITY.

6. LABELING:

BACKGROUND: PANTONE 2945 BLUE.
TEXT "L-COM" FONT: MyriaMM ITALIC.
TEXT "SOCKET SAVER" FONT: ARIAL BOLD, HEIGHT: .085 [2.16]
TEXT COLOR: WHITE.

7. COMPONENT SHALL BE INDIVIDUALLY PACKAGED IAW L-COM SPECIFICATION PS-0031.

REGULATORY COMPLIANCE:

EU RoHS DIRECTIVE (MOST RECENT RELEASED VERSION).

THE INFORMATION CONTAINED IN THIS DRAWING IS THE SOLE PROPERTY OF INFINITE ELECTRONICS, INC. ANY REPRODUCTION IN PART OR WHOLE WITHOUT THE WRITTEN PERMISSION OF INFINITE ELECTRONICS, INC. IS PROHIBITED. THESE COMMODITIES, TECHNOLOGY OR SOFTWARE WERE EXPORTED FROM THE UNITED STATES IN ACCORDANCE WITH THE EXPORT ADMINISTRATION REGULATIONS. DIVERSION CONTRARY TO U.S. LAW PROHIBITED.

LC LG Rev-D5 Asize

6

5

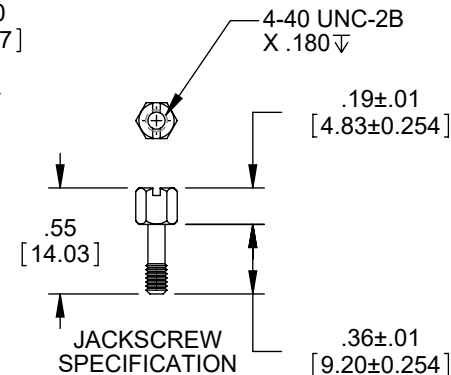
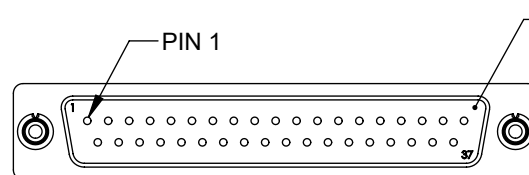
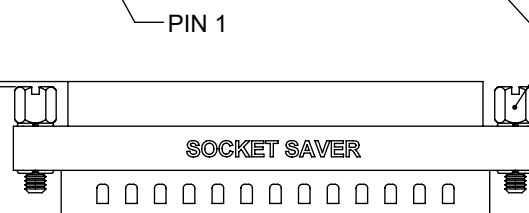
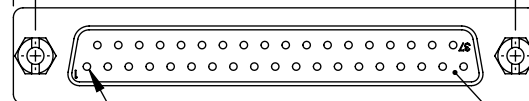
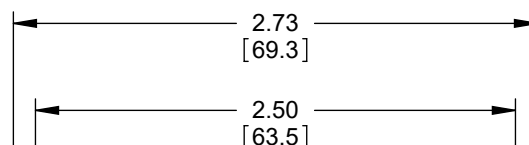
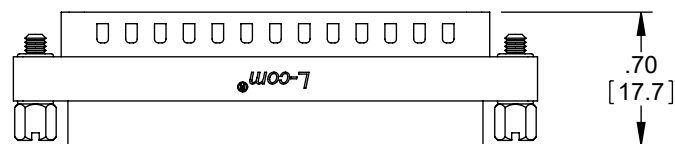
4

3

2

1

REVISION					
ZONE	REV	DESCRIPTION	DATE	CHANGED BY	APPROVED
	H	ECO-15038	10/13/2025	AKRESOWSKI	DGUST



UNLESS OTHERWISE SPECIFIED
LEADING DIMENSIONS ARE INCHES
DIMENSIONS IN [] ARE MILLIMETERS

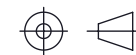
TOLERANCES:
X = ±.2 [5] FRACTIONS ± 1/32
XX = ±.02 [0.5] ANGLES ± 1°
XXX = ±.005 [0.13]

CABLE LENGTH TOLERANCES:
≤12 [305] = +1 [25] / -0
>12 [305] ≤ 60 [1524] = +2 [51] / -0
>60 [1524] ≤ 120 [3048] = +4 [102] / -0
>120 [3048] ≤ 300 [7620] = +6 [152] / -0
>300 [7620] = +5% / -0

ALL DIMENSIONS ARE FOR REFERENCE ONLY
AND SUBJECT TO CHANGE WITHOUT NOTICE.
UN-DIMENSIONED NON-CRITICAL FEATURES
MAY VARY IN SIZE AND LOCATION
COLORS MAY VARY

L-com
an INFINIT® brand

Website: www.L-com.com
Phone: 1.800.341.5266 | 1.978.682.6936



INTERPRET ALL DIMENSIONS AND
TOLERANCES PER ASME Y14.5

SCALE NONE SHEET 1 OF 1

DESCRIPTION

ADPT, SKT SAVER DB37 SLIM M/F

SIZE	CAGE CODE	DRAWN BY	ITEM NO.	REV
A	43321	R.CARRICK	DGB37MF	H