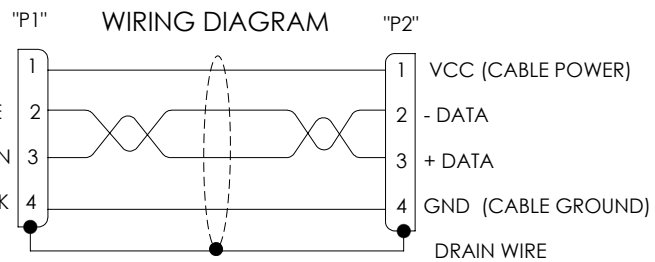
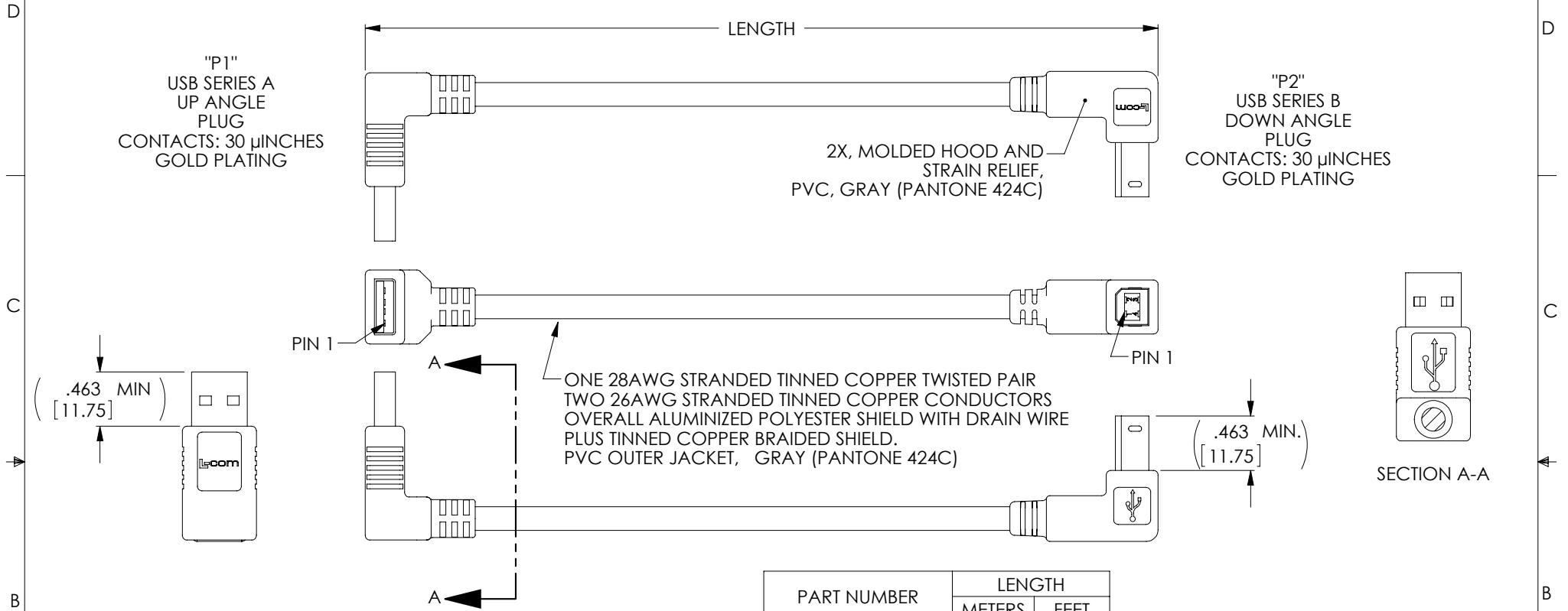


THE INFORMATION CONTAINED IN THIS DRAWING IS THE SOLE PROPERTY OF L-COM, INC. ANY REPRODUCTION IN PART OR WHOLE WITHOUT THE WRITTEN PERMISSION OF L-COM, INC. IS PROHIBITED.

**RoHS Compliant** ✓

REVISIONS			
REV	DESCRIPTION	DATE	APPROVED
A	INITIAL RELEASE	10/30/12	D.GRIFFIN



PART NUMBER	LENGTH	
	METERS	FEET
CA90UA-90DB-03M	0.3	.98
CA90UA-90DB-05M	0.5	1.64
CA90UA-90DB-075M	0.75	2.46
CA90UA-90DB-1M	1.0	3.28
CA90UA-90DB-2M	2.0	6.56
CA90UA-90DB-3M	3.0	9.84
CA90UA-90DB-4M	4.0	13.12
CA90UA-90DB-5M	5.0	16.41

- NOTES:
1. CABLE ASSEMBLY SHALL HAVE 360° SHIELD TERMINATION.
  2. CABLE ASSEMBLY SHALL MEET USB 2.0 REQUIREMENTS.
  3. CABLE ASSEMBLY SHALL BE TESTED FOR CONTINUITY.
  4. CABLE ASSEMBLY SHALL BE INDIVIDUALLY PACKAGED IN ACCORDANCE WITH L-COM SPECIFICATION PS-0031.

UNLESS OTHERWISE SPECIFIED, DIMENSIONS ARE IN INCHES [mm] OVERALL CABLE LENGTH TOLERANCE: ≤12 [305] = +1 [25] / -0 >12 [305] ≤60 [1524] = +2 [51] / -0 >60 [1524] ≤120 [3048] = +4 [102] / -0 >120 [3048] ≤300 [7620] = +6 [152] / -0 >300 [7620] = +3% / -0%	APPROVALS	DATE		45 BEECHWOOD DRIVE NORTH ANDOVER, MA 01845
	DRAWN BY D.FRISIELLO	10/25/12		
ALL OTHER DIMENSIONAL TOLERANCES: .X = ±.2 .XX = ±.02 .XXX = ±.005	APPROVED BY S. SMITH	10/25/12	CATEGORY	USB
PROJECTION	CONFIGURATION DETAILS OF UNDIMENSIONED FEATURES MAY VARY	COLOR VARIATIONS MAY OCCUR	PRODUCT DESCRIPTION	CA USB 90UP A/90DN B DX
	SIZE <b>A</b>	FSCM NO. <b>43321</b>	DWG. NO. CA90UA-90DB	REV. <b>A</b>
	SCALE: NONE	CAD FILE: CA90UA-90DB.SLDDRW	SHEET 1 OF 1	