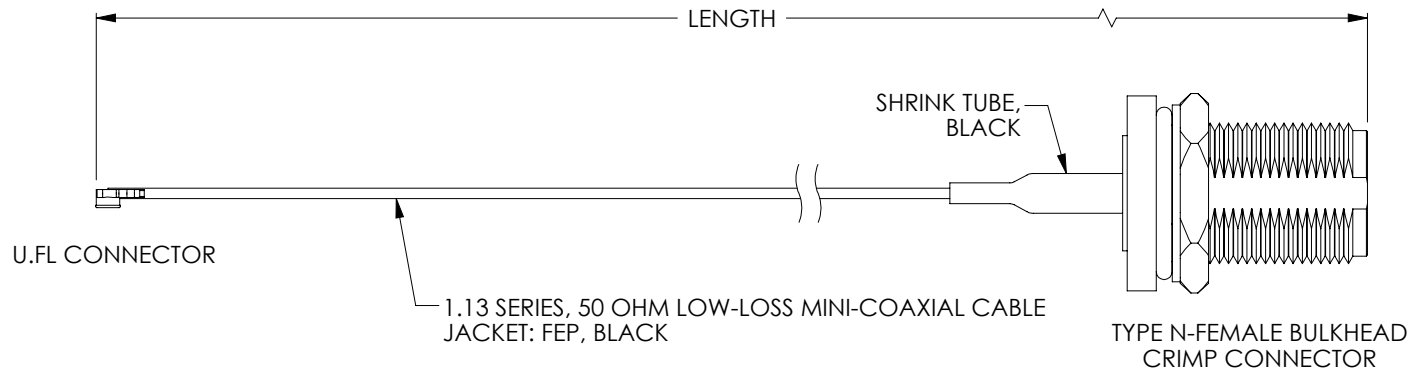


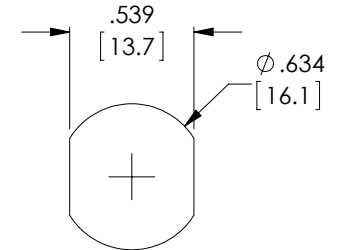
THE INFORMATION CONTAINED IN THIS DRAWING IS THE SOLE PROPERTY OF L-COM, INC. ANY REPRODUCTION IN PART OR WHOLE WITHOUT THE WRITTEN PERMISSION OF L-COM, INC. IS PROHIBITED.

RoHS Compliant ✓

REVISIONS			
REV	DESCRIPTION	DATE	APPROVED
A	INITIAL RELEASE	8/14/12	D.GRIFFIN



LENGTH CODE CHART		
CABLE# & LENGTH	LENGTH SYMBOL	EXAMPLES OF PART# USED
CA-UFLNBQXXX	WHERE XXX = LENGTH IN FEET	CA-UFLNBQ010 (10 FEET)
CA-UFLNBQNXX	WHERE NXX = LENGTH IN INCHES	CA-UFLNBQN16 (16 INCHES)
CA-UFLNBQMXX	WHERE MXX = LENGTH IN METERS	CA-UFLNBQM07 (7 METERS)
CA-UFLNBQXMX	WHERE XMX = LENGTH IN DECIMAL METERS	CA-UFLNBQ3M5 (3.5 METERS)
CA-UFLNBQCXX	WHERE CXX = LENGTH IN CENTIMETERS	CA-UFLNBQC30 (30 CENTIMETERS)



RECOMMENDED
PANEL CUTOUT

NOTES:

1. CABLE ASSEMBLY SHALL BE TESTED FOR CONTINUITY.
2. CABLE ASSEMBLY SHALL RECEIVE INSERTION LOSS TEST PER L-COM SPECIFICATIONS.
3. CABLE ASSEMBLY SHALL BE INDIVIDUALLY PACKAGED IN ACCORDANCE WITH L-COM SPECIFICATION PS-0031.

UNLESS OTHERWISE SPECIFIED, DIMENSIONS ARE IN INCHES [mm] OVERALL CABLE LENGTH TOLERANCE: ≤ 12 [305] = +1 [25] / -0 > 12 [305] ≤ 60 [1524] = +2 [51] / -0 > 60 [1524] ≤ 120 [3048] = +4 [102] / -0 > 120 [3048] ≤ 300 [7620] = +6 [152] / -0 > 300 [7620] = +3% / -0% ALL OTHER DIMENSIONAL TOLERANCES: .X = ±.2 .XX = ±.02 .XXX = ±.005	APPROVALS DRAWN BY D. DESJARDIN	DATE 8/14/12		45 BEECHWOOD DRIVE NORTH ANDOVER, MA 01845		
	CHECKED BY P. PESA	DATE 8/14/12		CATEGORY COAXIAL		
	APPROVED BY P. PESA	DATE 8/14/12	PRODUCT DESCRIPTION CA, 1.13 UFL/NF BKHD			
	PROJECTION 	CONFIGURATION DETAILS OF UNDIMENSIONED FEATURES MAY VARY	COLOR VARIATIONS MAY OCCUR	SIZE A	FSCM NO. 43321	DWG. NO. CA-UFLNBQ
SCALE: NONE			CAD FILE: CA-UFLNBQ.SLDDRW		SHEET 1 OF 1	