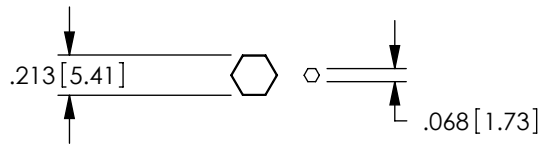
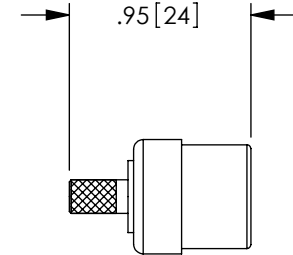
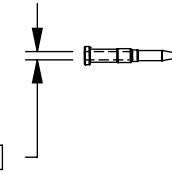
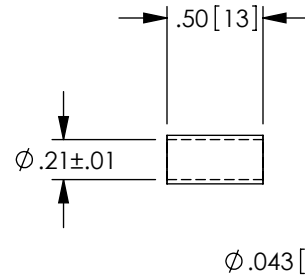
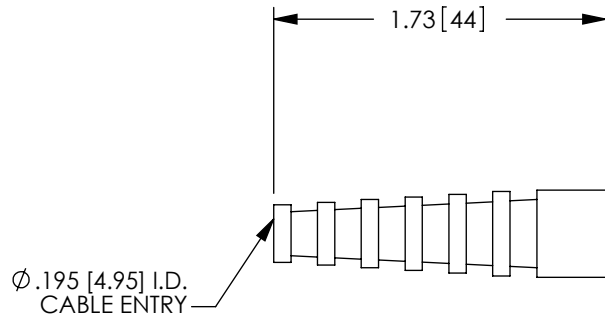
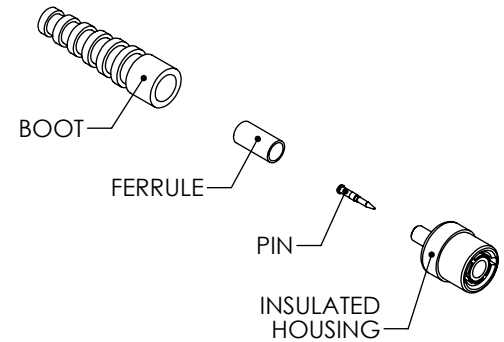
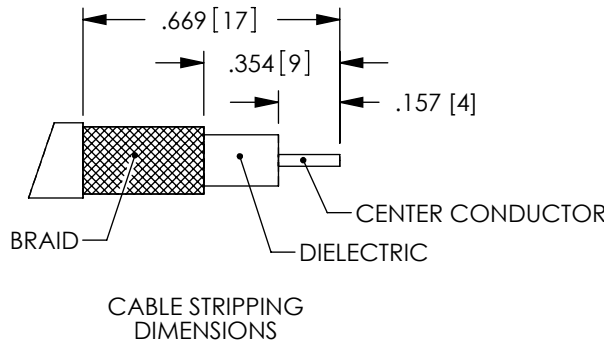


THE INFORMATION CONTAINED IN THIS DRAWING IS THE SOLE PROPERTY OF L-COM, INC. ANY REPRODUCTION IN PART OR WHOLE WITHOUT THE WRITTEN PERMISSION OF L-COM, INC. IS PROHIBITED.

REVISIONS			
REV	DESCRIPTION	DATE	APPROVED
E	ECN 3177: UPDATE DWG FORMAT	2/5/08	D.GRIFFIN
F	ECN 3682: REVISED DIMENSIONS	10/31/08	D.FRISIELLO



RECOMMENDED  
FERRULE & PIN  
CRIMP SIZES



NOTES:

**MATERIAL:**

BODY: BRASS  
FERRULE: BRASS OR COPPER ALLOY  
PIN: BRASS  
INSULATOR: ACETAL  
SHELL INSULATOR: BLACK POLYCARBONATE  
BOOT: BLACK PVC

**FINISH:**

BODY: NICKEL PLATE  
FERRULE: NICKEL PLATE  
PIN: GOLD PLATE

**ELECTRICAL:**

IMPEDANCE: 50 OHM

**PACKAGING:**

INDIVIDUALLY PACKAGE EACH ASSEMBLY UTILIZING APPROPRIATE SIZED BAG

**APPLICATION:**

RG58 CABLE ASSEMBLIES

**RoHS Compliant** ✓

UNLESS OTHERWISE SPECIFIED, DIMENSIONS ARE IN INCHES [mm]  DIMENSIONAL TOLERANCES: .X = ±.1 .XX = ±.01 .XXX = ±.005  ANGULAR TOLERANCES: ALL = ± 1°	APPROVALS	DATE		45 BEECHWOOD DRIVE NORTH ANDOVER, MA 01845	
	DRAWN BY CMCCORMICK	11/20/2001			
	CHECKED BY D.PARHAM	11/20/2001	CATEGORY COAXIAL		
	APPROVED BY R.CARRICK	11/20/2001	PRODUCT DESCRIPTION CONN BNC M INSULATED RG58		
PROJECTION 	COLOR VARIATIONS MAY OCCUR	SIZE <b>A</b>	FSCM NO. <b>43321</b>	DWG. NO. <b>BIF-83</b>	REV. <b>F</b>
		SCALE: 1:1	CAD FILE: BIF-83.SLDDRW		SHEET 1 OF 1