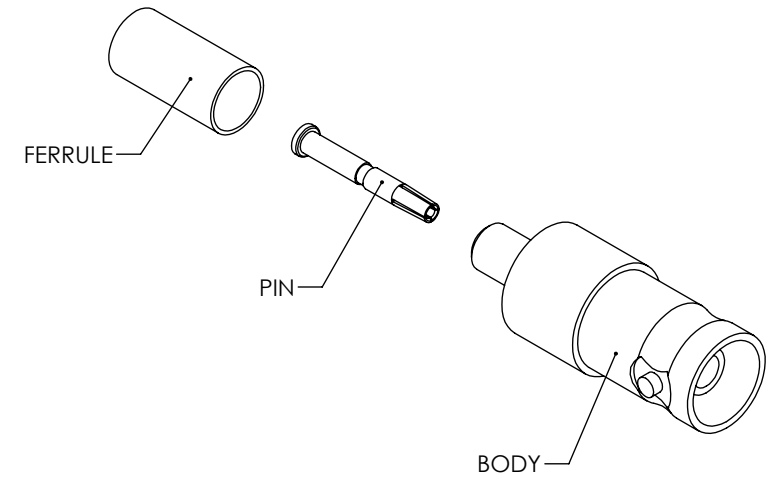
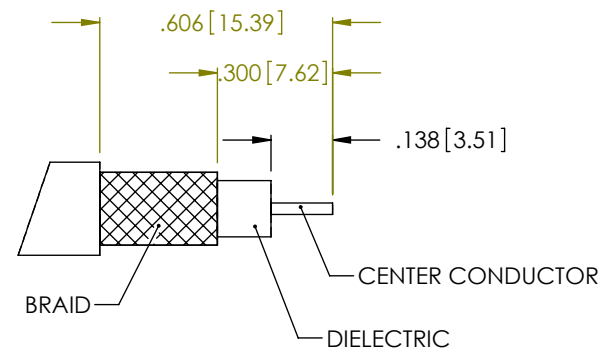
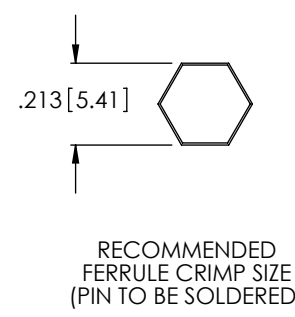
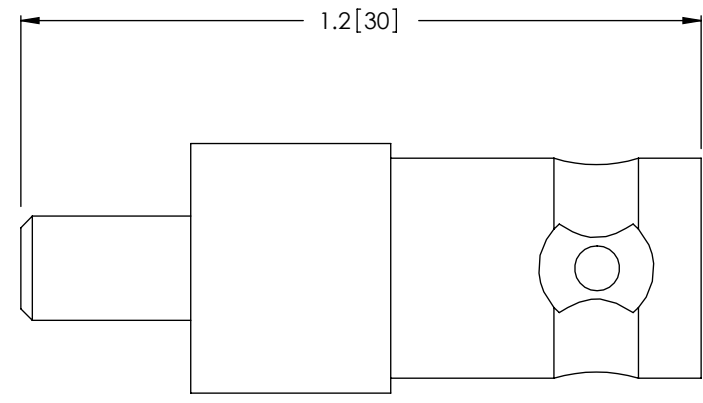
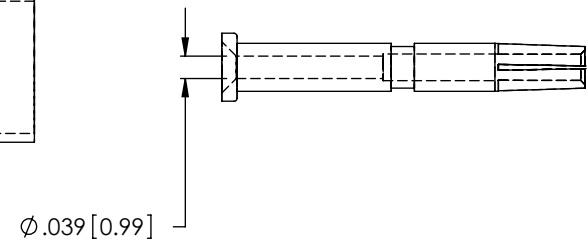
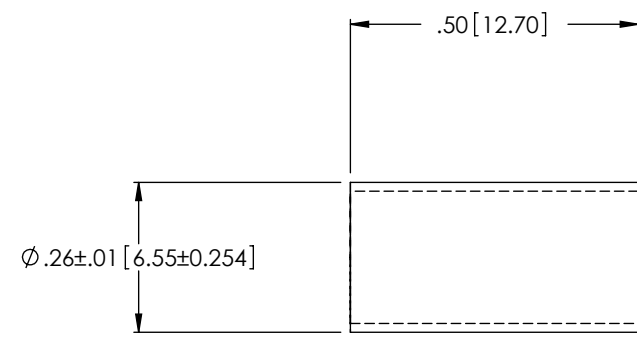


THE INFORMATION CONTAINED IN THIS DRAWING IS THE SOLE PROPERTY OF L-COM, INC. ANY REPRODUCTIONS IN PART OR WHOLE WITHOUT THE WRITTEN PERMISSION OF L-COM, INC. IS PROHIBITED.

REVISIONS			
REV	DESCRIPTION	DATE	CHANGED BY
A	RELEASED FOR PRODUCTION	01/12/06	MCCORMICK
B	ECN 3165: UPDATE DWG FORMAT	1/21/08	D.GRIFFIN
B	ECN 99999: MOVED DIMENSIONAL LINES TO FERRULE	11/19/08	D.FRISIELLO



NOTES:

MATERIAL:
 BODY: BRASS
 FERRULE: BRASS OR COPPPER ALLOY
 PIN: BRASS
 INSULATOR: ACETAL

FINISH:
 BODY: NICKEL PLATE
 FERRULE: NICKEL PLATE
 PIN: GOLD PLATE

ELECTRICAL:
 IMPEDANCE: 50 OHM

PACKAGING:
 INDIVIDUALLY PACKAGE EACH ASSEMBLY UTILIZING APPROPRIATE SIZED BAG

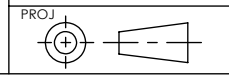
APPLICATION:
 RG58 COAX CABLE ASSEMBLIES

RoHS Compliant ✓

UNLESS OTHERWISE SPECIFIED, DIMENSIONS ARE IN INCHES [mm] TOLERANCES TO BE:
 .X ±.1 [2.5] ANGLES ±2°
 .XX ±.01 [.25]
 .XXX ±.005 [.13]

OVERALL CABLE LENGTH TOL:
 ≤ 60 [1524] +3 [76.2] / -0
 > 60 [1524] +5% / -0%

APPROVALS	DATE
DRAWN BY C.MCCORMICK	01/12/2006
CHECKED BY D.PARHAM	01/12/2006
APPROVED BY M.LAHEY	01/12/2006



L-com 45 BEECHWOOD DRIVE
 CONNECTIVITY PRODUCTS NORTH ANDOVER, MA 01845

CATEGORY
 PRODUCT DESCRIPTION
CONN 50 OHM BNC F RG58 CRIMP

SIZE	FSCM NO.	DWG. NO.	REV.
B	43321	BAC515	B

SCALE: 1:1 CAD FILE: BAC515.SLDDRW SHEET 1 OF 1