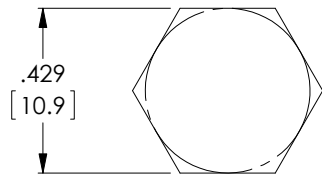
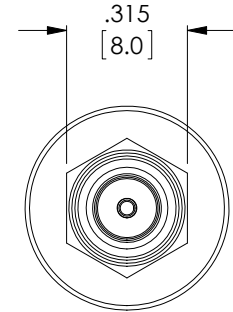
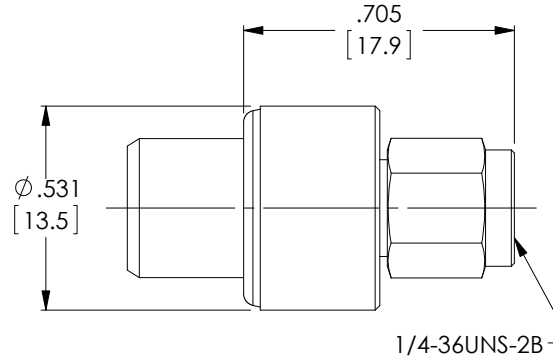
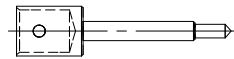
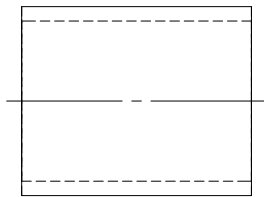


THE INFORMATION CONTAINED IN THIS DRAWING IS THE SOLE PROPERTY OF L-COM, INC. ANY REPRODUCTION IN PART OR WHOLE WITHOUT THE WRITTEN PERMISSION OF L-COM, INC. IS PROHIBITED.

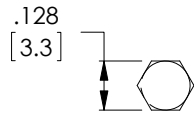
RoHS Compliant ✓

REVISIONS			
REV	DESCRIPTION	DATE	APPROVED
B	ECN 6444: UPDATED DRAWING FORMAT. ADDED PACKAGING	10/4/12	D. DESJARDIN

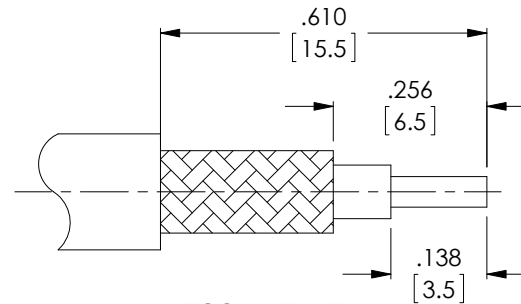
DESCRIPTION	MATERIAL	FINISH
BODY	BRASS	NICKEL
CENTER CONTACT	BRASS	GOLD
FERRULE	BRASS	NICKEL
INSULATOR	TEFLON	--
GASKET	RUBBER	--
RETAINING RING	BRASS	NICKEL
SHELL	BRASS	NICKEL



RECOMMENDED
FERRULE
CRIMP SIZE



RECOMMENDED
PIN
CRIMP SIZE



RECOMMENDED
CABLE STRIPPING

NOTES:

ELECTRICAL:

IMPEDENCE: 50 OHMS
 WITHSTAND VOLTAGE: 1000V
 FREQUENCY RANGE: 0~6 GHz
 VSWR: <1.50 @ 0~6 GHz
 DURABILITY: ≥ 500 CYCLE
 CABLE RETENTION: > 40 POUNDS

MISCELLANEOUS:

COMPONENTS SHALL BE INDIVIDUALLY PACKAGED IN ACCORDANCE WITH L-COM SPECIFICATIONS PS-0031.

ALL DIMENSIONS ARE FOR REFERENCE ONLY.

UNLESS OTHERWISE SPECIFIED, DIMENSIONS ARE IN INCHES [mm] OVERALL CABLE LENGTH TOLERANCE: ≤12 [305] = +1 [25] / -0 >12 [305] ≤60 [1524] = +2 [51] / -0 >60 [1524] ≤120 [3048] = +4 [102] / -0 >120 [3048] ≤300 [7620] = +6 [152] / -0 >300 [7620] = +3% / -0% ALL OTHER DIMENSIONAL TOLERANCES: .X = ± .2 .XX = ± .02 .XXX = ± .005	APPROVALS DRAWN BY D. DESJARDIN CHECKED BY D. PARHAM APPROVED BY K. BURGNER	DATE 10/4/12 10/4/12 10/5/12	45 BEECHWOOD DRIVE NORTH ANDOVER, MA 01845		
	CATEGORY COAXIAL			PRODUCT DESCRIPTION CON,SMA MALE CRIMP LMR400	
PROJECTION 	COLOR VARIATIONS MAY OCCUR	SIZE A	FSCM NO. 43321		DWG. NO. ASM-1406
1A801-035		SCALE: NONE	CAD FILE: ASM-1406.SLDDRW	SHEET 1 OF 1	