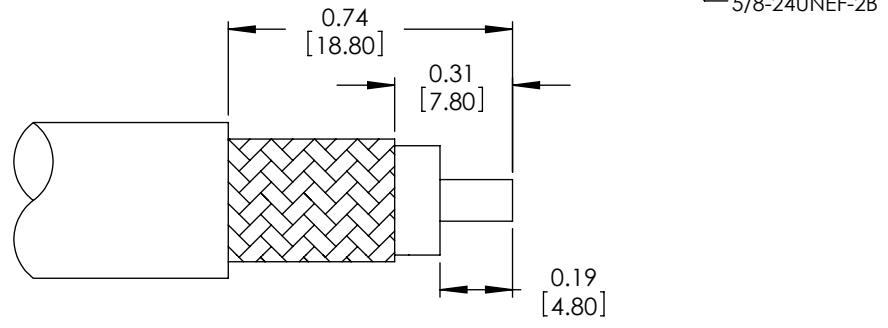
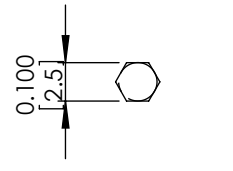
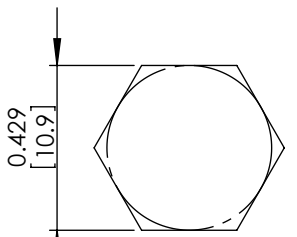
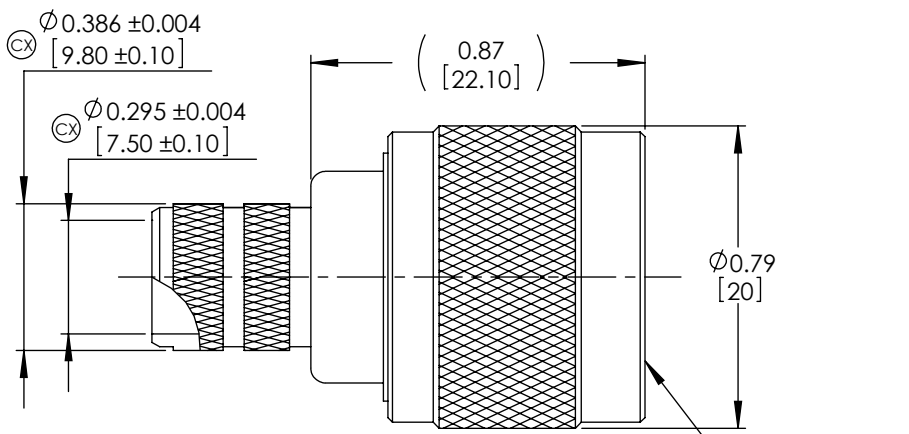
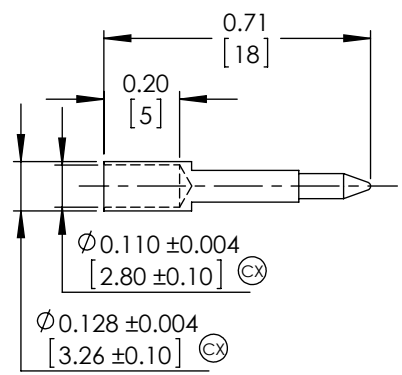
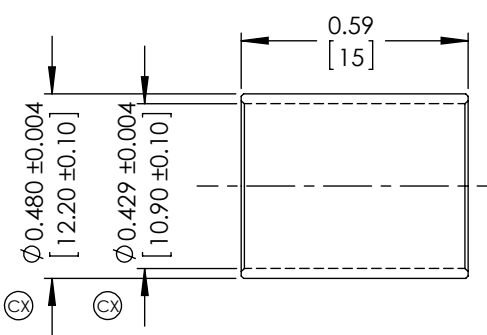


8 7 6 5 4 3 2 1

THE INFORMATION CONTAINED IN THIS DRAWING IS THE SOLE PROPERTY OF L-COM, INC. ANY REPRODUCTION IN PART OR WHOLE WITHOUT THE WRITTEN PERMISSION OF L-COM, INC. IS PROHIBITED.

REVISIONS			
REV	DESCRIPTION	DATE	APPROVED
A	INITIAL RELEASE	07/08/06	K.Burgner
B	ECN 4368: UPDATED FORMAT AND CONNECTOR INFO	11/11/09	B.Puchaski
C	ECN 4692: REMOVED INSULATOR PAD, UPDATE BODY	04/16/10	B.Puchaski
D	ECN 8549: UPDATE MATERIAL AND ADD CRITICAL DIMS	11/04/16	S.LI

DESCRIPTION	MATERIAL	FINISH
CENTER CONTACTS	BRASS	GOLD
OUTER CONTACT	BRASS	NICKEL
BODY	BRASS	NICKEL
CRIMP FERRULE	BRASS \triangle	NICKEL
GASKET	MVQ \triangle	---
INSULATOR	PTFE \triangle	---
RETAINING RING	Phosphor Bronze	---



NOTES:

ELECTRICAL:
 IMPEDENCE: 50 OHMS
 WITHSTAND VOLTAGE: 2500V
 FREQUENCY RANGE: 0~6 GHz
 VSWR: ≤ 1.50 @ 0~6 GHz
 DURABILITY: ≥ 500 CYCLE
 CABLE RETENTION: > 40 POUNDS

MISCELLANEOUS:
 COMPONENTS SHALL BE INDIVIDUALLY PACKAGED IN ACCORDANCE WITH L-COM SPECIFICATIONS PS-0031.

\odot PRESENT CRITICAL DIMENSIONS

REGULATORY COMPLIANCE:
 CE2011/65/EU(RoHS DIRECTIVE)

UNLESS OTHERWISE SPECIFIED, DIMENSIONS ARE IN INCHES [mm]	APPROVALS	DATE	 50 HIGH STREET NORTH ANDOVER, MA 01845
	DRAWN BY B.Puchaski	11/11/09	
	CHECKED BY M.Audas	11/11/09	
	APPROVED BY M.Audas	11/11/09	
DIMENSIONAL TOLERANCES: .X = ± 1 [2.54] .XX = ± 0.1 [2.5] .XXX = ± 0.005 [0.13]	CONFIGURATION DETAILS OF UNDIMENSIONED FEATURES MAY VARY		CATEGORY CONNECTOR
ANGULAR TOLERANCES: ALL = $\pm 1^\circ$	PRODUCT DESCRIPTION N STRAIGHT MALE CRIMP FOR RG8 / LMR400		
PROJECTION	COLOR VARIATIONS MAY OCCUR	SIZE A	FSCM NO. 43321
		DWG. NO. ANM-1406	REV. D
		SCALE: NONE	CAD FILE: ANM-1406.SLDDRW
			SHEET 1 OF 1