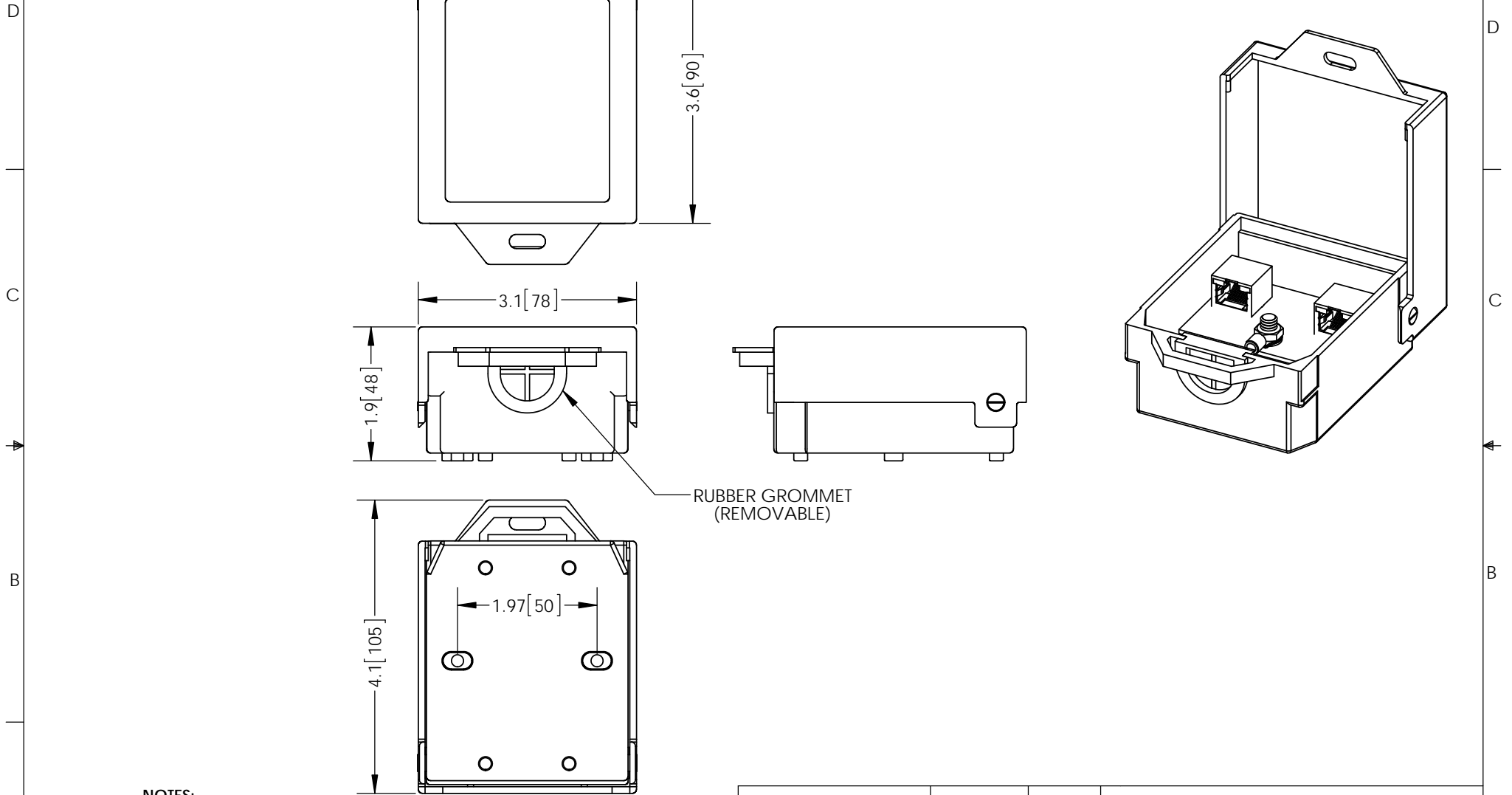


THE INFORMATION CONTAINED IN THIS DRAWING IS THE SOLE PROPERTY OF L-COM, INC. ANY REPRODUCTION IN PART OR WHOLE WITHOUT THE WRITTEN PERMISSION OF L-COM, INC. IS PROHIBITED.

REVISIONS			
REV	DESCRIPTION	DATE	APPROVED
A	INITIAL RELEASE	9/14/15	D.GRIFFIN



**NOTES:**

**PACKAGING:**

COMPONENT SHALL BE PACKAGED IN ACCORDANCE WITH L-COM SPEC PKG-00012

- ALL DIMENSIONS FOR REFERENCE-

**REGULATORY COMPLIANCE:**

CE2011/65/EU(RoHS DIRECTIVE)

UNLESS OTHERWISE SPECIFIED, DIMENSIONS ARE IN INCHES [mm]  DIMENSIONAL TOLERANCES: .X = ±.1 [2.54] .XX = ±.01 [.25] .XXX = ±.005 [.13]  ANGULAR TOLERANCES: ALL = ± 1°	APPROVALS	DATE		45 BEECHWOOD DRIVE NORTH ANDOVER, MA 01845	
	DRAWN BY B.PUCHASKI	09/14/15			
	CHECKED BY K.BURGNER	09/14/15	CATEGORY <b>LIGHTNING PROTECTOR</b>		
	APPROVED BY P.PESA	09/14/15	PRODUCT DESCRIPTION CAT6A LIGHTNING PROTECTOR WEATHER RESISTANT RJ45 10/100/1000 BASE-T		
PROJECTION 	COLOR VARIATIONS MAY OCCUR	SIZE <b>A</b>	FSCM NO. <b>43321</b>	DWG. NO. <b>AL-CAT6AJW</b>	REV. <b>A</b>
		SCALE: NONE	CAD FILE: AL-CAT6AJW.SLDDRW	SHEET 1 OF 1	