

## Low Loss N Male to SMA Male Cable Assembly using LMR-200-UF Coax With Times Microwave Components with HeatShrink



### LCCA9915

#### Configuration

- Connector 1: N Male
- Connector 2: SMA Male
- Cable Type: LMR-200-UF
- Coax Flex Type: Flexible

#### Description

L-com's LCCA9915 is a low loss N male to SMA male cable assembly using LMR-200-UF coax with Times Microwave components with heatshrink and ships same-day. The LMR-200-UF coax of this N cable uses the PE (F) dielectric with a VoP of 83%, resulting in very low insertion loss compared to solid dielectrics. These flexible RF cable assemblies are ideal for applications where flexure is required. Our L-com N to SMA cable assembly has a male to male gender configuration with flexible LMR-200-UF series coax and operates to 5.8 GHz. The double shield of this N cable is layered by tinned copper braid over aluminum tape providing shielding effectiveness greater than 90dB.

Custom versions of this N male to N male cable, along with the rest of L-com's other RF assemblies, can also be built and shipped same day. Other available RF cable assembly value added services from L-com include connector orientation or clocking, heat shrink booting and custom labeling. RF testing can also be performed to document the electrical performance of your cable assembly. Contact a sales representative for testing or custom RF cable quotes. Part number LCCA9915 L-com Low Loss N Male to SMA Male Cable Assembly using LMR-200-UF Coax With Times Microwave Components with HeatShrink data sheet PDF includes details of the RF product specifications, CAD drawing(s) and dimensions below.

#### Electrical Specifications

Description	Minimum	Typical	Maximum	Units
Frequency Range	DC		5.8	GHz
VSWR			1.5:1	
Velocity of Propagation		83		%
RF Shielding	90			dB
Group Delay		1.22 [4]		ns/ft [ns/m]
Capacitance		24.5 [80.38]		pF/ft [pF/m]
Inductance		0.061 [0.2]		uH/ft [uH/m]
DC Resistance Inner Conductor		7.5 [24.61]		Ohms/1000ft [Ohms/Km]
DC Resistance Outer Conductor		4.9 [16.08]		Ohms/1000ft [Ohms/Km]
Dielectric Withstanding Voltage (DC)			1,000	Vdc
Jacket Spark			3,000	Vrms
Input Power (Peak)			2.5	KWatts

#### Specifications by Frequency

Low Loss N Male to SMA Male Cable  
Assembly using LMR-200-UF Coax With Times  
Microwave Components with HeatShrink



**LCCA9915**

Part Number	Length	Description	F1	F2	F3	F4	F5	Units	Weight (lbs)
			Frequency	250	500	1000	2500	5800	
LCCA9915	Custom Lengths Available	Insertion Loss (Typ.)	0.061	0.087	0.125	0.202	0.316	dB/ft	
			0.21	0.29	0.42	0.67	1.04	dB/m	
LCCA9915-12	12 inch	Insertion Loss (Typ.)	0.22	0.26	0.33	0.47	0.66	dB	0.142
LCCA9915-24	24 inch	Insertion Loss (Typ.)	0.28	0.35	0.45	0.67	0.98	dB	0.165
LCCA9915-36	36 inch	Insertion Loss (Typ.)	0.34	0.44	0.58	0.87	1.29	dB	0.187
LCCA9915-60	60 inch	Insertion Loss (Typ.)	0.46	0.61	0.83	1.27	1.93	dB	0.231
LCCA9915-300	300 inch	Insertion Loss (Typ.)	1.68	2.35	3.33	5.31	8.25	dB	0.672

The insertion loss data for the base model does not include loss due to the connectors. Each length includes insertion loss due to the connectors.

Loss due to Connector 1: 0.1 dB  
 Loss due to Connector 2: 0.1\*sqrt(fGHz) dB  
 Base Weight: 0.142 pounds  
 Additional Weight per Inch: 0.00184 pounds

Electrical Specification Notes:  
 Values at 25°C, sea level.

**Mechanical Specifications**

**Cable Assembly**

Width/Diameter 0.5 in [12.7 mm]  
 Weight 0.142 lbs [64.41 g]

**Cable**

Cable Type LMR-200-UF  
 Impedance 50 Ohms  
 Inner Conductor Type Stranded  
 Inner Conductor Material and Plating Copper  
 Dielectric Type PE (F)  
 Number of Shields 2  
 Shield Layer 1 Aluminum Tape  
 Shield Layer 2 Tinned Copper Braid  
 Jacket Material TPE  
 Jacket Diameter 0.195 in [4.95 mm]  
 One Time Minimum Bend Radius 0.5 in [12.7 mm]  
 Repeated Minimum Bend Radius 2 in [50.8 mm]  
 Bending Moment 0.1 lbs-ft [0.14 N-m]

Low Loss N Male to SMA Male Cable  
Assembly using LMR-200-UF Coax With Times  
Microwave Components with HeatShrink



**LCCA9915**

**Connectors**

Description	Connector 1	Connector 2
Type	N Male	SMA Male
Specification	MIL-STD-348	MIL-STD-348
Impedance	50 Ohms	50 Ohms
Configuration	Straight	Straight
Contact Material and Plating	Brass, Gold	Beryllium Copper, Gold
Contact Plating Specification		ASTM B488
Dielectric Type	PTFE	Teflon
Body Material and Plating	Brass, Tri-Metal	Passivated Stainless Steel
Body Plating Specification		SAE-AMS-2700
Coupling Nut Material and Plating	Brass, Tri-Metal	Passivated Stainless Steel
Coupling Nut Plating Specification		SAE-AMS-2700
Hex Size	13/16 Inch	5/16 Inch

**Environmental Specifications**

**Compliance Certifications** (see [product page](#) for current document)

**Plotted and Other Data**

Notes:  
Values at 25°C, sea level.

Low Loss N Male to SMA Male Cable  
Assembly using LMR-200-UF Coax With Times  
Microwave Components with HeatShrink



**LCCA9915**

**Typical Performance Data**

**How to Order**

Part Number Configuration:

**LCCA9915**

**- xx**

**uu**

Unit of Measure:

cm = Centimeters

<blank> = Inches

Length

Base Number

Example: LCCA9915-12 = 12 inches long cable  
LCCA9915-100cm = 100 cm long cable

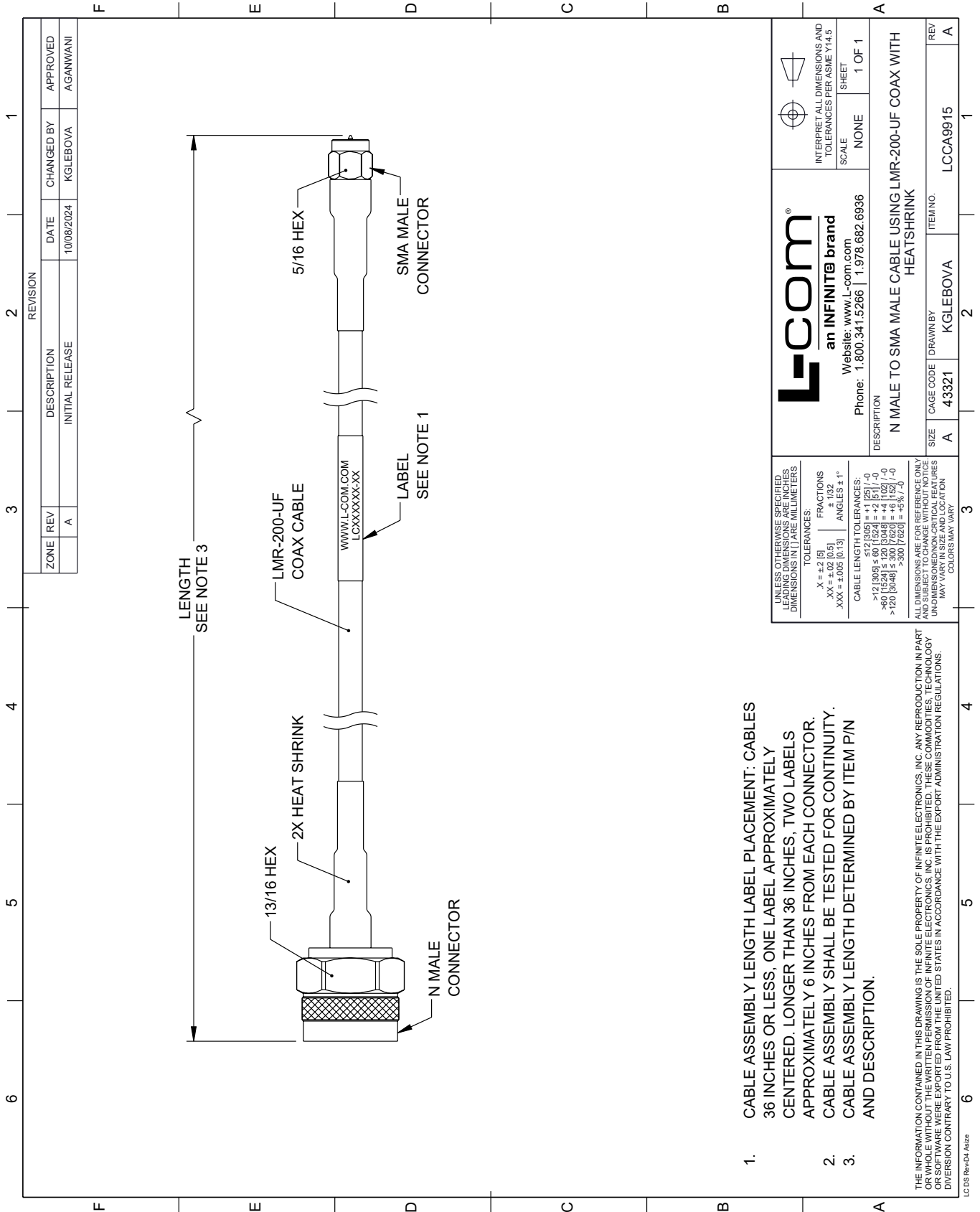
Low Loss N Male to SMA Male Cable Assembly using LMR-200-UF Coax With Times Microwave Components with HeatShrink from L-com has same day shipment for domestic and International orders. Our portfolio includes coaxial cable assemblies, connectors, adapters and custom products as well as lightning and surge protectors, NEMA rated enclosures, and an RF product line which includes antennas, amplifiers, passive, and active components.

URL: <https://www.l-com.com/n-male-sma-male-cable-assembly-invalid-lcca9915-p.aspx>

The information contained within this document is accurate to the best of our knowledge and representative of the part described herein. It may be necessary to make modifications to the part and/or the documentation of the part in order to implement improvements. L-com reserves the right to make such changes as required. Unless otherwise stated, all specifications are nominal. L-com does not make any representation or warranty regarding the suitability of the part described herein for any particular purpose, and L-com does not assume liability arising out of the use of any part or document.

# LCCA9915 CAD Drawing

Low Loss N Male to SMA Male Cable Assembly using LMR-200-UF Coax  
With Times Microwave Components with HeatShrink



- CABLE ASSEMBLY LENGTH LABEL PLACEMENT: CABLES 36 INCHES OR LESS, ONE LABEL APPROXIMATELY CENTERED. LONGER THAN 36 INCHES, TWO LABELS APPROXIMATELY 6 INCHES FROM EACH CONNECTOR.
- CABLE ASSEMBLY SHALL BE TESTED FOR CONTINUITY.
- CABLE ASSEMBLY LENGTH DETERMINED BY ITEM P/N AND DESCRIPTION.

THE INFORMATION CONTAINED IN THIS DRAWING IS THE SOLE PROPERTY OF INFINITE ELECTRONICS, INC. ANY REPRODUCTION IN PART OR WHOLE WITHOUT THE WRITTEN PERMISSION OF INFINITE ELECTRONICS, INC. IS PROHIBITED. THESE COMMODITIES, TECHNOLOGY OR SERVICES ARE BEING EXPORTED FROM THE UNITED STATES IN ACCORDANCE WITH THE EXPORT ADMINISTRATION REGULATIONS. DIVISION CONTRARY TO U.S. LAW PROHIBITED.

LC 05 Rev-D4 Atsize

<p>UNLESS OTHERWISE SPECIFIED, LEADING DIMENSIONS ARE IN INCHES. DIMENSIONS IN [ ] ARE MILLIMETERS.</p> <p>TOLERANCES:</p> <p>.X = ±.2 [5]</p> <p>.XX = ±.02 [0.5]</p> <p>.XXX = ±.005 [0.13]</p> <p>FRACTIONS ± 1/32</p> <p>ANGLES ± 1°</p> <p>CABLE LENGTH TOLERANCES:</p> <p>&gt;12 [305] ≤ 60 [1524] = ±.1 [25] / -0</p> <p>&gt;60 [1524] ≤ 120 [3048] = ±.4 [102] / -0</p> <p>&gt;120 [3048] ≤ 300 [7620] = ±.6 [152] / -0</p>	<p><b>L-com</b> an INFINITE brand</p> <p>Website: www.L-com.com</p> <p>Phone: 1.800.341.5266   1.978.682.6936</p>	<p>INTERPRET ALL DIMENSIONS AND TOLERANCES PER ASME Y14.5</p> <p>SCALE NONE</p> <p>SHEET 1 OF 1</p>
		<p>DESCRIPTION</p> <p>N MALE TO SMA MALE CABLE USING LMR-200-UF COAX WITH HEATSHRINK</p>
<p>ALL DIMENSIONS ARE FOR REFERENCE ONLY. UNLESS OTHERWISE SPECIFIED, DIMENSIONS ARE IN INCHES. DIMENSIONS IN [ ] ARE MILLIMETERS. UNLESS OTHERWISE SPECIFIED, LEADING DIMENSIONS ARE IN INCHES. DIMENSIONS IN [ ] ARE MILLIMETERS.</p> <p>COLORS MAY VARY</p>	<p>SIZE A</p> <p>CAGE CODE 43321</p> <p>DRAWN BY KGLEBOVA</p> <p>ITEM NO. LCCA9915</p>	<p>REV A</p>