

SMA Male Right Angle Connector Crimp/ Solder Attachment for LMR-240, LMR-240- DB, LMR-240-FR, and 240-Series Cable



TC-240-SM-RA-SS-D-LC



Times Microwave Systems Connector Specification

Configuration

- SMA Male Connector
- Right Angle Body Geometry
- Connector Interface Types: LMR-240, LMR-240-DB, LMR-240-FR, 240-Series

Features

- Designed to industry standard interface dimensions
- Quality body materials and plating
- Crimp/Solder attachment
- Operates to 3 GHz

Applications

- RF Boxes and components
- RF Test systems
- General Purpose RF Interconnect
- Laboratory applications

Description

L-com's SMA Male connector for LMR-240, LMR-240-DB, LMR-240-FR and 240-Series coax uses a Crimp/Solder attachment method. This SMA connector is one of the many RF coaxial connectors in L-com's product line up and like all our products, they will ship the same day. Our SMA Male connector operates up to a maximum frequency of 3 GHz.

The specifications and a basic dimensional drawing for TC-240-SM-RA-SS-D-LC Male SMA connector can be found in this datasheet PDF. L-com's portfolio of RF and microwave connectors allows users to choose from a large number of options when building assemblies to fit their RF interconnect needs. RF cables can be created to fulfill many interconnect applications ranging from In the Box hookup, test equipment connectivity or as part of a system installation. In addition to an offering of RF connectors and coaxial cable L-com offers both standard and custom cable assemblies to fit a customer's specific needs.

Mechanical Specifications

Size

Length	0.56 in [14.22 mm]
Width	0.31 in [7.87 mm]
Height	0.05 in [1.27 mm]
Weight	0.018 lbs [8.16 g]

Material Specifications

Description	Material	Plating
Contact	Brass	Gold
Insulation	PTFE	
Body	Stainless Steel	Passivated
Gasket	Silicone	
Crimp Sleeve	Copper	Nickel

SMA Male Right Angle Connector Crimp/ Solder Attachment for LMR-240, LMR-240- DB, LMR-240-FR, and 240-Series Cable

TC-240-SM-RA-SS-D-LC



Environmental Specifications

Temperature

Compliance Certifications (see [product page](#) for current document)

Plotted and Other Data

Notes:

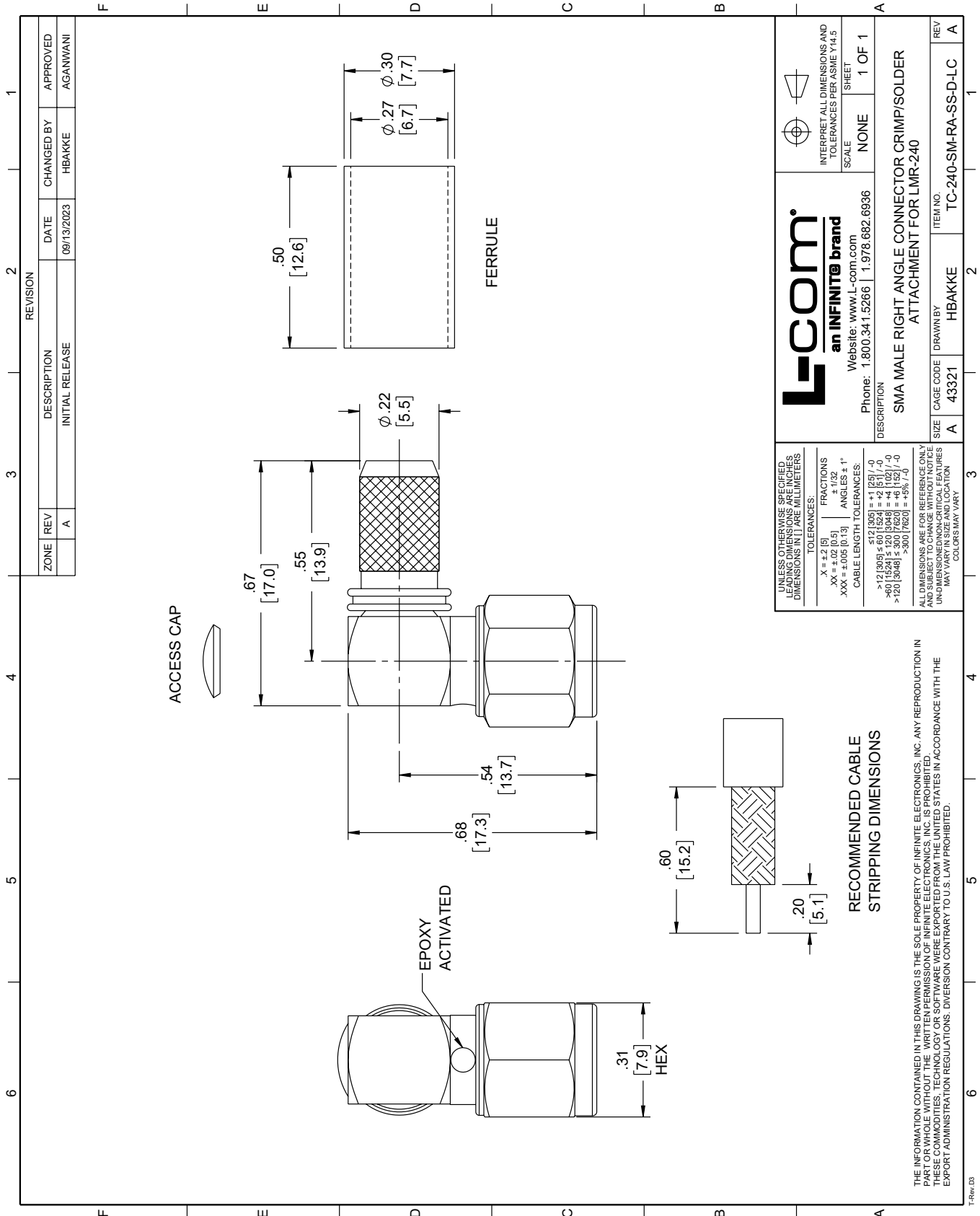
SMA Male Right Angle Connector Crimp/Solder Attachment for LMR-240, LMR-240-DB, LMR-240-FR, and 240-Series Cable from L-com has same day shipment for domestic and International orders. Our portfolio includes coaxial cable assemblies, connectors, adapters and custom products as well as lightning and surge protectors, NEMA rated enclosures, and an RF product line which includes antennas, amplifiers, passive, and active components.

URL: <https://www.l-com.com/sma-male-right-angle-connector-crimp-solder-attachment-lmr-240-lmr-240-db-lmr-240-fr-240-series-cable-TC-240-SM-RA-SS-D-LC-p.aspx>

The information contained within this document is accurate to the best of our knowledge and representative of the part described herein. It may be necessary to make modifications to the part and/or the documentation of the part in order to implement improvements. L-com reserves the right to make such changes as required. Unless otherwise stated, all specifications are nominal. L-com does not make any representation or warranty regarding the suitability of the part described herein for any particular purpose, and L-com does not assume liability arising out of the use of any part or document.

TC-240-SM-RA-SS-D-LC CAD Drawing

SMA Male Right Angle Connector Crimp/Solder Attachment for LMR-240, LMR-240-DB, LMR-240-FR, and 240-Series Cable



REVISION		DATE	CHANGED BY	APPROVED
ZONE	REV			
	A	09/13/2023	HBAKKE	AGANWANI
DESCRIPTION				
INITIAL RELEASE				

L-com
 an INFINITE brand
 Website: www.L-com.com
 Phone: 1.800.341.5266 | 1.978.682.6936

INTERPRET ALL DIMENSIONS AND TOLERANCES PER ASME Y14.5
 SCALE NONE
 SHEET 1 OF 1

DESCRIPTION: SMA MALE RIGHT ANGLE CONNECTOR CRIMP/SOLDER ATTACHMENT FOR LMR-240
 ITEM NO. TC-240-SM-RA-SS-D-LC
 CAGE CODE 43321
 DRAWN BY HBAKKE
 SIZE A