

Pressure Sensor, compact, 35 MPa, 4-20mA, G1/4, M12



PT211A-212 Pressure Sensor

Features

- Advanced Microfused Silicon Strain Gauge
- Efficient lightning protection
- Strong RFI&EMI protection
- Advanced digital temperature compensation
- Wide working temperature range
- High accuracy, high frequency response
- Compact design
- Cost effective

Applications

- Industrial process control
- Automatic testing system
- Hydraulic and pneumatic systems
- Pump station and water treatment system
- Industrial machinery

Description

The L-com PT211A-212 compact IoT pressure sensor is designed for hydraulic, pneumatic, water treatment, machinery, industrial process testing and control applications. This pressure transducer has an advanced micro-fused silicon strain gauge that measures a maximum pressure range of 35 Mpa. Our sensor comes with a IP65 stainless steel housing which eliminates the potential for leaks.

General Specifications

| | |
|-----------------------|-----------------|
| Application: | Pressure Sensor |
| Pressure Type: | Gauge |
| Electrical Connector: | M12 connector |
| Process Connector: | G1/4 |
| Output Signal: | 4-20 mA |

| Description | Minimum | Typical | Maximum | Unit |
|------------------------|---------|---------|---------|--------------|
| Pressure Range | 0 | | 35 | Mpa |
| Accuracy | | ±0.5 | | % Full Scale |
| Compensated Temp Range | -10 | | 70 | deg C |
| Overpressure | | 300 | | % Full Scale |
| Destruction Pressure | | 500 | | % Full Scale |
| Long Term Stability | | 0.2 | | % Full Scale |
| Temperature Range | -40 | | 85 | deg C |

Electrical Specifications

| Description | Minimum | Typical | Maximum | Unit |
|-------------------------------|---------|---------|---------|------|
| Power Supply/Excitation Level | 9 | 24 | 30 | VDC |

Click the following link (or enter part number in "SEARCH" on website) to obtain additional part information including price, inventory and certifications:
[Pressure Sensor, compact, 35 MPa, 4-20mA, G1/4, M12 PT211A-212](#)

Pressure Sensor, compact, 35 MPa, 4-20mA, G1/4, M12



PT211A-212 Pressure Sensor

Material Specifications

| Description | Material |
|-------------|-------------|
| Housing | SS (17-4PH) |

Mechanical Specifications

| | |
|----------------|-----|
| RoHS Compliant | Yes |
|----------------|-----|

Environmental Specifications

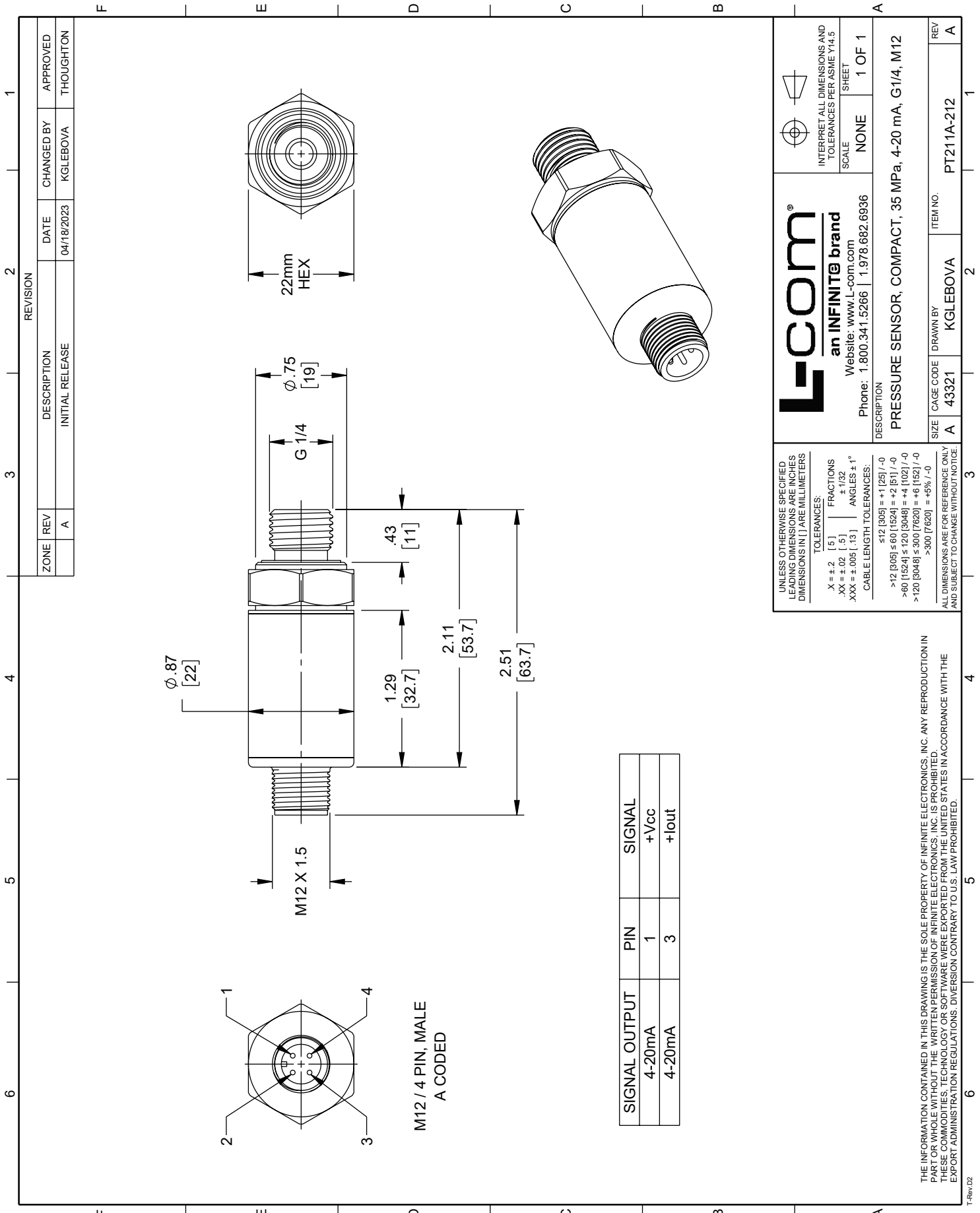
| | |
|-------------------------|----------------------|
| Temperature (Operating) | -40deg C to 85deg C |
| Temperature (Storage) | -40deg C to 125deg C |
| Shock | 100 g |
| Ingress Protection | IP65 |

The Infinite Electronics portfolio includes coaxial cable assemblies, connectors, adapters and custom products, as well as our wireless product line which includes antennas, RF amplifiers, lightning and surge protectors, and NEMA rated enclosures.

The information contained in this document is accurate to the best of our knowledge and representative of the part described herein. It may be necessary to make modifications to the part and/or the documentation of the part, in order to implement improvements. L-com reserves the right to make such changes as required. Unless otherwise stated, all specifications are nominal. L-com does not make any representation or warranty regarding the suitability of the part described herein for any particular purpose, and L-com does not assume any liability arising out of the use of any part or documentation.

PT211A-212 CAD Drawing

Pressure Sensor, compact, 35 MPa, 4-20mA, G1/4, M12



L-com
an INFINITE brand
Website: www.L-com.com
Phone: 1.800.341.5266 | 1.978.682.6936

INTERPRET ALL DIMENSIONS AND TOLERANCES PER ASME Y14.5

SCALE: NONE

SHEET: 1 OF 1

UNLESS OTHERWISE SPECIFIED LEADING DIMENSIONS ARE INCHES DIMENSIONS IN [] ARE MILLIMETERS

TOLERANCES:

X = ±.2 [5] | FRACTIONS ±.1/32 | ANGLES ± 1°

XX = ±.02 [.5] | CABLE LENGTH TOLERANCES:

≤12 [305] = ±.1 [25] / -0

>12 [305] ≤ 60 [1524] = ±.2 [51] / -0

>60 [1524] ≤ 120 [3048] = ±.4 [102] / -0

>120 [3048] ≤ 300 [7620] = ±.6 [152] / -0

>300 [7620] = ±.5% / -0

ALL DIMENSIONS ARE FOR REFERENCE ONLY AND SUBJECT TO CHANGE WITHOUT NOTICE.

| | | |
|------------------------------------------------------|------------|----------|
| DESCRIPTION | ITEM NO. | REV |
| PRESSURE SENSOR, COMPACT, 35 MPa, 4-20 mA, G1/4, M12 | PT211A-212 | A |
| SIZE | CAGE CODE | DRAWN BY |
| A | 43321 | KGLEBOVA |

THE INFORMATION CONTAINED IN THIS DRAWING IS THE SOLE PROPERTY OF INFINITE ELECTRONICS, INC. ANY REPRODUCTION IN ANY FORM OR BY ANY MEANS WITHOUT THE WRITTEN PERMISSION OF INFINITE ELECTRONICS, INC. IS PROHIBITED. THESE COMMODITIES, TECHNOLOGY OR SOFTWARE WERE EXPORTED FROM THE UNITED STATES IN ACCORDANCE WITH THE EXPORT ADMINISTRATION REGULATIONS. DIVERSION CONTRARY TO U.S. LAW PROHIBITED.