

Passive PLC, Field Unit PLC Splitter, 1x08 Standard  
(Even) Split, 2m 250um Bare Fiber



## PPS5P-08BSS-22NN

### Features

- Passive
- PLC
- Even split
- 40x4x4mm field cassette
- 1x8
- 2m 250um bare fiber leads
- -40°C to +85°C
- i-temp

### Applications

- Single Mode Fiber Networking
- Single Fiber
- 1x8|| Even Split
- FTTx
- PON
- Metro transport
- Regional Distribution
- Outside Plant (ISP) Operation
- -40°C to +85°C

### Description

The L-COM PPS5P-08BSS-22NN is 1x8 passive PLC splitter. The L-COM PPS5P-08BSS-22NN is a 40x4x4mm field cassette. The L-COM PPS5P-08BSS-22NN splits 1 input signal to 8 output signals and 8 input signals into 1 composite output signal bidirectionally. The L-COM PPS5P-08BSS-22NN has 2 meter 250um fiber leads. The L-COM PPS5P-08BSS-22NN is a single fiber filter ideal for FTTx and PON applications. The L-COM PPS5P-08BSS-22NN is rated for -40°C to +85°C. L-COM produces the high quality passive filters that your business can rely on. With products continually in stock and same-day shipping, our expert technical support and knowledgeable sales team can get you to the right parts for the job.

### Configuration

Module Function PLC Splitter

### Filter Specifications

Description	Minimum	Typical	Maximum	Units
Operating Wavelength	1260		1650	nm
Pass Band Insertion Loss			10.7	dB
Return Loss	55			dB
Directivity			55	dB
PDL			0.3	dB

### Size

Length 78.74 in [200 cm]

### Environmental Specifications

#### Temperature

Operating Range -40 to +85 deg C  
Storage Range -40 to +85 deg C

Humidity 5-95%RH

Click the following link (or enter part number in "SEARCH" on website) to obtain additional part information including price, inventory and certifications:  
[Passive PLC, Field Unit PLC Splitter, 1x08 Standard \(Even\) Split, 2m 250um Bare Fiber PPS5P-08BSS-22NN](#)

Passive PLC, Field Unit PLC Splitter, 1x08 Standard  
(Even) Split, 2m 250um Bare Fiber



## PPS5P-08BSS-22NN

**Compliance Certifications** (see [product page](#) for current document)

### Plotted and Other Data

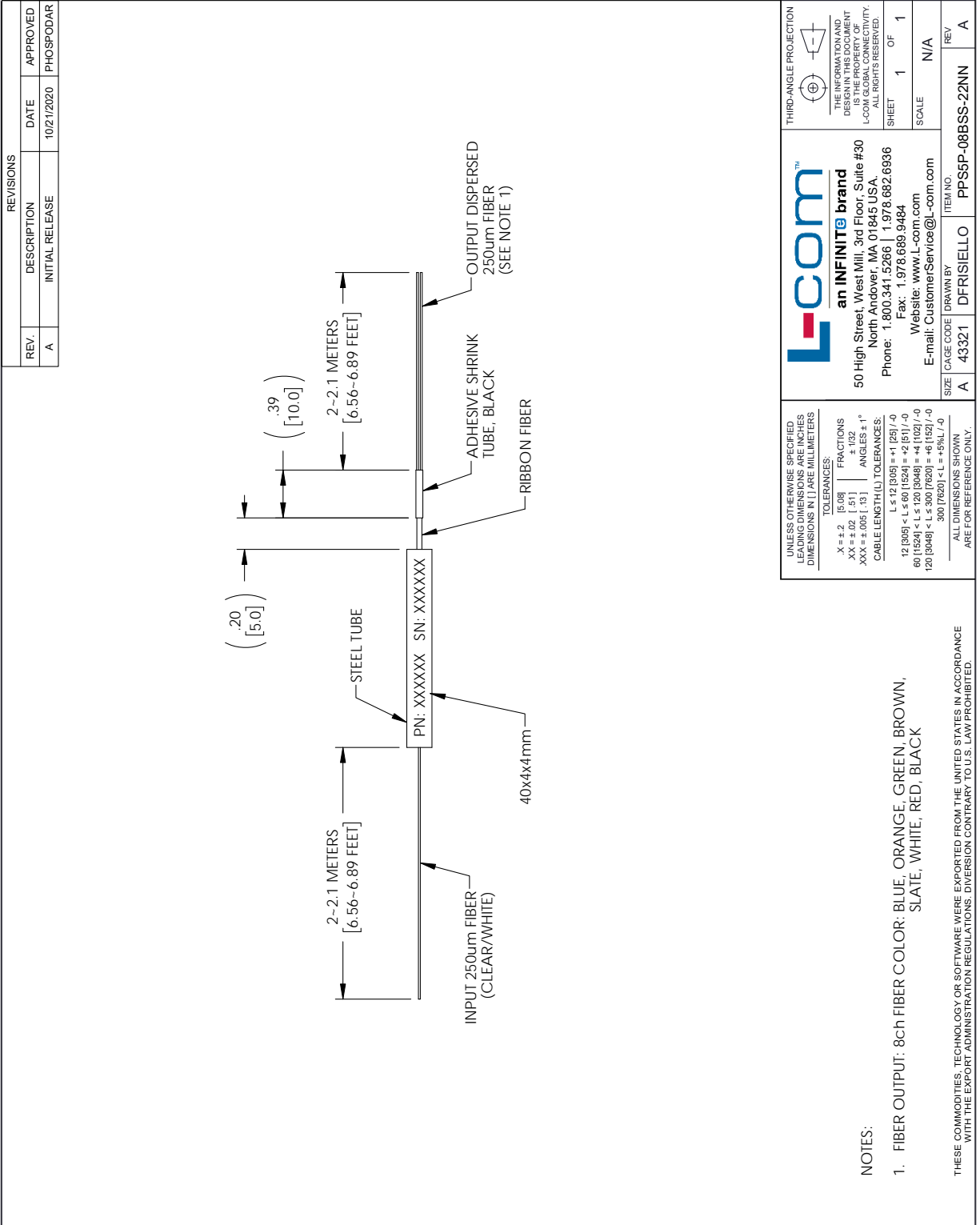
Notes:

Passive PLC, Field Unit PLC Splitter, 1x08 Standard (Even) Split, 2m 250um Bare Fiber from L-com has same day shipment for domestic and International orders. Our portfolio includes coaxial cable assemblies, connectors, adapters and custom products as well as lightning and surge protectors, NEMA rated enclosures, and an RF product line which includes antennas, amplifiers, passive, and active components.

The information contained within this document is accurate to the best of our knowledge and representative of the part described herein. It may be necessary to make modifications to the part and/or the documentation of the part in order to impliment improvements. L-com reserves the right to make such changes as required. Unless otherwise stated, all specifications are nominal. L-com does not make any representation or warranty regarding the suitability of the part described herein for any particular purpose, and L-com does not assume liability arising out of the use of any part or document.

Passive PLC, Field Unit PLC Splitter, 1x08 Standard (Even) Split, 2m 250um Bare Fiber

L-com CAD Drawing



**L-com™**  
**an INFINITE brand**  
 50 High Street, West Mill, 3rd Floor, Suite #30  
 North Andover, MA 01845 USA  
 Phone: 1.800.341.5266 | 1.978.682.6936  
 Fax: 1.978.689.9484  
 Website: www.L-com.com  
 E-mail: CustomerService@L-com.com

THIRD-ANGLE PROJECTION

THE INFORMATION AND DESCRIPTIONS ON THIS DRAWING ARE THE PROPERTY OF L-COM GLOBAL CONNECTIVITY. ALL RIGHTS RESERVED.

SHEET 1 OF 1  
 SCALE N/A

UNLESS OTHERWISE SPECIFIED LEADING DIMENSIONS ARE INCHES DIMENSIONS IN [ ] ARE MILLIMETERS.

TOLERANCES:  
 .X ± .2 [5.08] FRACTIONS ± .132  
 .XX ± .02 [ .51 ] ANGLES ± 1°  
 XXX ± .005 [ .13 ]  
 CABLE LENGTH (L) TOLERANCES:  
 L ≤ 12 [305] ± .1 [25] / -0  
 12 [305] < L ≤ 60 [1524] ± .2 [51] / -0  
 60 [1524] < L ≤ 120 [3048] ± .4 [102] / -0  
 120 [3048] < L ≤ 300 [7620] ± .6 [152] / -0  
 300 [7620] < L ± .6% L / -0

ALL DIMENSIONS SHOWN ARE FOR REFERENCE ONLY.

ITEM NO. PPS5P-08BSS-22NN  
 DRAWN BY DFRISIELLO  
 SIZE A  
 CAGE CODE 43321

NOTES:  
 1. FIBER OUTPUT: 8ch FIBER COLOR: BLUE, ORANGE, GREEN, BROWN, SLATE, WHITE, RED, BLACK

THESE COMMODITIES, TECHNOLOGY OR SOFTWARE WERE EXPORTED FROM THE UNITED STATES IN ACCORDANCE WITH THE EXPORT ADMINISTRATION REGULATIONS. DIVERSION CONTRARY TO U.S. LAW PROHIBITED.