

PoE+ Midspan Injector, 1 Port Power Over Ethernet, 10 Gbps, CAT 6a or 7, UL, 802.3at Certified, 53 Volts at 32 Watts Power Supply



POE10GAT

Features

- Power over Ethernet injector, 31.8W, 53V@0.6A PoE+ Type 2 IEEE 802.3at certified compliant
- 10gig rated (Cat 6a/7) for up to 180ft (55m); 1Gb and 5Gb data rates supported up to 328ft (100m); High quality shielded cabling such as from L-com's TRD695A Ethernet cable families is recommended for peak performance
- Power Supply Included
- Midspan type PoE (Power Over Ethernet Injector) with +(1,2)(4,5), -(3,6)(7,8) pin assignments
- Approvals for IEC, EMC, EN, FCC, CE and UL (see datasheet for full listing)

Applications

- Access Points, Bridges, Network Switches, Amplifiers and Amplified Antennas
- IP (Internet Protocol) and Security Cameras
- VoIP (Voice over Internet Protocol) Telephones
- Digital Signage and Building Control Systems
- Traffic Systems

Description

L-com's POE10GAT PoE+ midspan injector is IEEE 802.at certified and is here to meet all your Ethernet power needs. Its single port shielded design can supply up to 31.8 watts and 53 volts at 0.6 amps of power to your PoE device. The POE10GAT is perfect for IP phones, cameras, access points, network switches, digital signage, building, lighting, traffic control systems or any Type 2 PoE+ IEEE 802.at compliant device.

This PoE+ midspan injector part number POE10GAT from L-com is certified for up to 10 gigabit speeds (Category 6a or 7) for up to 180ft (55m). 1 and 5 gigabit speeds are supported up to 328ft (100m). High quality Ethernet cables such as from L-com's TRD695A line are recommended for peak performance. The power supply is included with each PoE+ midspan Category 6a or 7 Power over Ethernet unit.

L-com's POE10GAT PoE+ injector is certified for various IEC, EMC, EN and FCC regulations (see datasheet for full details) and is both UL and CE listed. It's simple and compact design is both easy to use and set up and includes mounting ears if needed. This L-com's PoE+ midspan injector 31.8 watts and 53 volts Power over Ethernet in stock and ready to ship, buy online from L-com today.

Electrical Specifications

Description	Minimum	Typical	Maximum	Units
Ethernet Connectors		RJ45 Jack		
PoE Version		802.3at		
Ethernet Standard		Category 6a, 10/100/1000/10000T (10Gb)		
Max Current			0.6	A
Voltage Rating DC (Input)			240	VDC
Voltage Rating DC (Output)			53	VDC
Operating Voltage AC			264	VAC
Power Connector		3 pin included		

Electrical Specification Notes:

Click the following link (or enter part number in "SEARCH" on website) to obtain additional part information including price, inventory and certifications:
[PoE+ Midspan Injector, 1 Port Power Over Ethernet, 10 Gbps, CAT 6a or 7, UL, 802.3at Certified, 53 Volts at 32 Watts Power Supply](#)

PoE+ Midspan Injector, 1 Port Power Over Ethernet, 10 Gbps, CAT 6a or 7, UL, 802.3at Certified, 53 Volts at 32 Watts Power Supply



POE10GAT

10Gb distance may vary according to the cable and data source used. Shielded, high quality network cable is recommended such as L-com's TRD695A line. Category 6a/7, 10Gb distances are supported up to 180ft (55m) with 1Gb and 5Gb distances supported up to 328ft (100m) when using appropriate cabling.

Mechanical Specifications

Size		
Height	1.25 in	[31.75 mm]
Width	2.46 in	[62.48 mm]
Length	4.6 in	[116.84 mm]
Weight	0.661 lbs	[299.82 g]
Housing Material	Resin, UL94 V-0	

Environmental Specifications

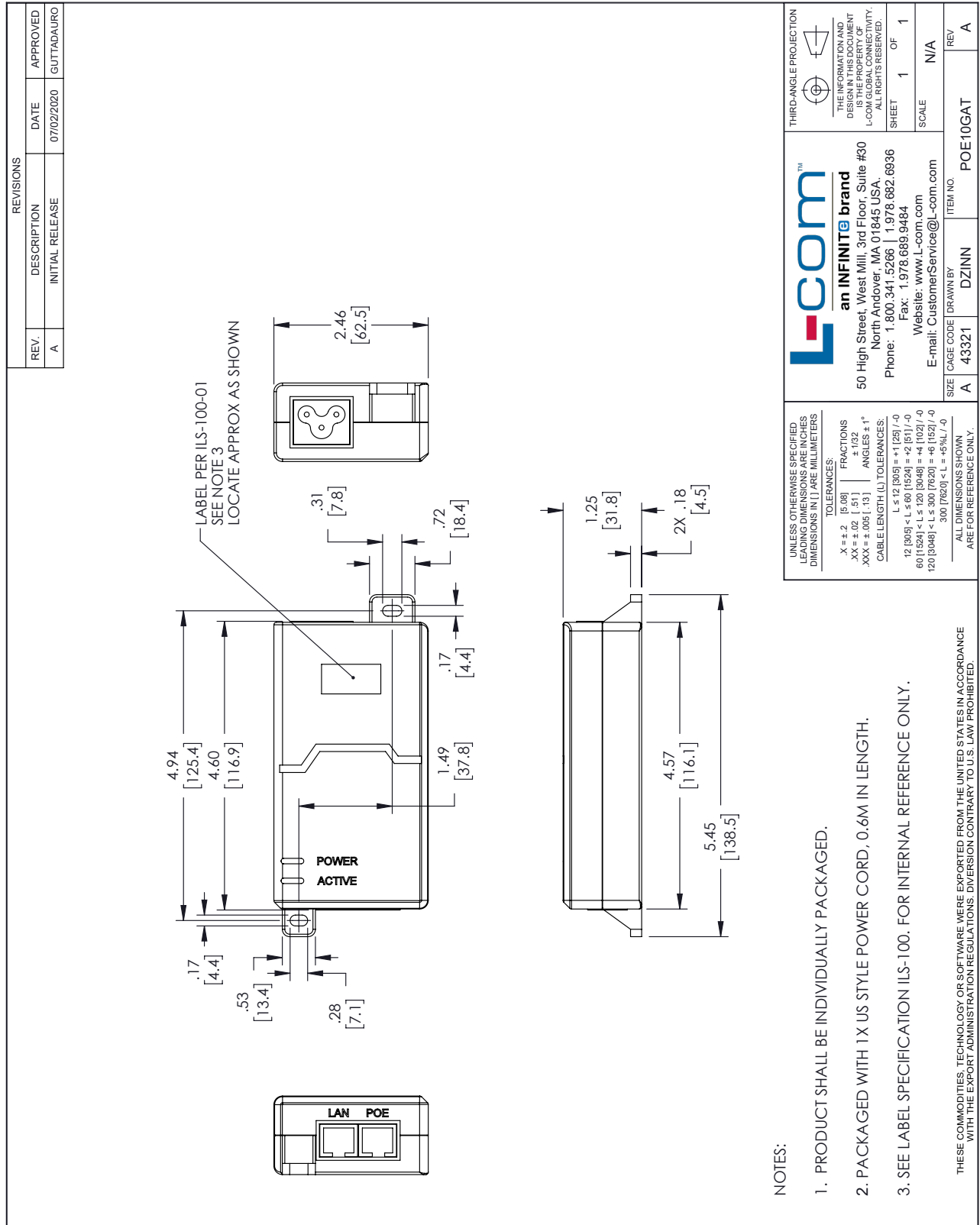
Operating Temperature, Injector	-10 to +40 deg C
Environment Type	Indoor
EMI, EMC, EN Compliance	Yes per EMC Directive 2014/30/EU with compliance to EN 55032:2015, EN55035:2017, EN 61000-3-2:2019, EN61000-3-3:2013+A1:2019 & EN 62368-1:2014+A11:2017
FCC Compliant	Yes per Part 15, Subpart B Class B, ANSI C63.4:2014
UL Listed	Yes
CE-LVD Marking	Yes per LVD 2014/35/EU

Our portfolio includes coaxial cable assemblies, connectors, adapters and custom products as well as lightning and surge protectors, NEMA rated enclosures, and an RF product line which includes antennas, amplifiers, passive, and active components.

The information contained in this document is accurate to the best of our knowledge and representative of the part described herein. It may be necessary to make modifications to the part and/or the documentation of the part, in order to implement improvements. L-com reserves the right to make such changes as required. Unless otherwise stated, all specifications are nominal. L-com does not make any representation or warranty regarding the suitability of the part described herein for any particular purpose, and L-com does not assume any liability arising out of the use of any part or documentation.

PoE+ Midspan Injector, 1 Port Power Over Ethernet, 10 Gbps, CAT 6a or 7, UL, 802.3at Certified, 53 Volts at 32 Watts Power Supply

L-com CAD Drawing



NOTES:

1. PRODUCT SHALL BE INDIVIDUALLY PACKAGED.
2. PACKAGED WITH 1X US STYLE POWER CORD, 0.6M IN LENGTH.
3. SEE LABEL SPECIFICATION ILS-100. FOR INTERNAL REFERENCE ONLY.

T-Rev.D