

Passive DWDM, Plug-In Single LGX Combo Mux&DeMux, 4CH, 100 GHz spacing, starting CH24 (1558.98nm), LC/UPC connectors, with EXP & Mon(1%)



PDW1C-04124-NN46

Features

- Passive
- DWDM
- 100GHz spacing
- LGX Cassette
- Two Fiber Mux& Demux Combo
- 4 Channels (24-27)
- Starting with channel 24 (1558.98nm)
- LC/UPC connectors
- Express Channel
- 1% Monitor option

Applications

- Single Mode Fiber Networking
- Dual Fiber
- Side by side Mux and DeMux functions
- 4 channels
- Metro transport
- Regional Distribution
- Inside Plant (ISP) Operation

Description

The L-COM PDW1C-04124-NN46 is a DWDM Passive Filter with 4 DWDM Channels. The L-COM PDW1C-04124-NN46 is a standard LGX filter with Combo Mux/DeMux functionality. The L-COM PDW1C-04124-NN46 has 4 DWDM channels: ITU CH24-27 starting with Channel 24 (1558.98nm) and with 100GHz channel spacing. The L-COM PDW1C-04124-NN46 has LC/UPC connectors and has Monitor port option on Mux and Demux. The L-COM PDW1C-04124-NN46 also has an Express Channel for passing all DWDM channels not present on this filter through, making this a great upgradable solution. The L-COM PDW1C-04124-NN46 is a dual fiber filter with one sending muxed signal and the other receiving a composit signal for demuxing. L-COM produces the high quality passive filters that your business can rely on. With products continually in stock and same-day shipping, our expert technical support and knowledgeable sales team can get you to the right parts for the job.

Configuration

Connector Type	LC/UPC
Number of Channels	4
Module Function	Mux/DeMux
Filter Type	DWDM

Filter Specifications

Description	Minimum	Typical	Maximum	Units
Operating Wavelength	1527.22		1564.68	nm
Pass Port Wavelength	1527.22		1564.68	nm
Pass Port Insertion Loss			2	dB
Pass Port Isolation	12			dB
Pass Band	0.68		0.93	nm
Pass Band Ripple			0.5	dB
Center Wavelength (Channel)	1555.75		1558.17	nm
Channel Spacing		0.83		nm
Channel Insertion Loss			2.5	dB
Return Loss	45			dB

Click the following link (or enter part number in "SEARCH" on website) to obtain additional part information including price, inventory and certifications: [Passive DWDM, Plug-In Single LGX Combo Mux&DeMux, 4CH, 100 GHz spacing, starting CH24 \(1558.98nm\), LC/UPC connectors, with EXP &](#)

Passive DWDM, Plug-In Single LGX Combo Mux&DeMux, 4CH, 100 GHz spacing, starting CH24 (1558.98nm), LC/UPC connectors, with EXP & Mon(1%)



PDW1C-04124-NN46

Directivity	50	dB
PDL	0.25	dB
PMD	0.2	PS
Power Handling	300	mW
Adjacent Channel Isolation	28	dB
Non-Adjacent Channel Isolation	40	dB
Channel to Monitor Port IL	25	dB
COM to Monitor Port IL	23	dB
IL Thermal Stability	0.005	dB/degC
Wavelength Thermal Stability	0.002	nm/degC

Environmental Specifications

Temperature

Operating Range -20 to +65 deg C

Storage Range -40 to +85 deg C

Humidity 5-95 %RH

Compliance Certifications (see [product page](#) for current document)

Plotted and Other Data

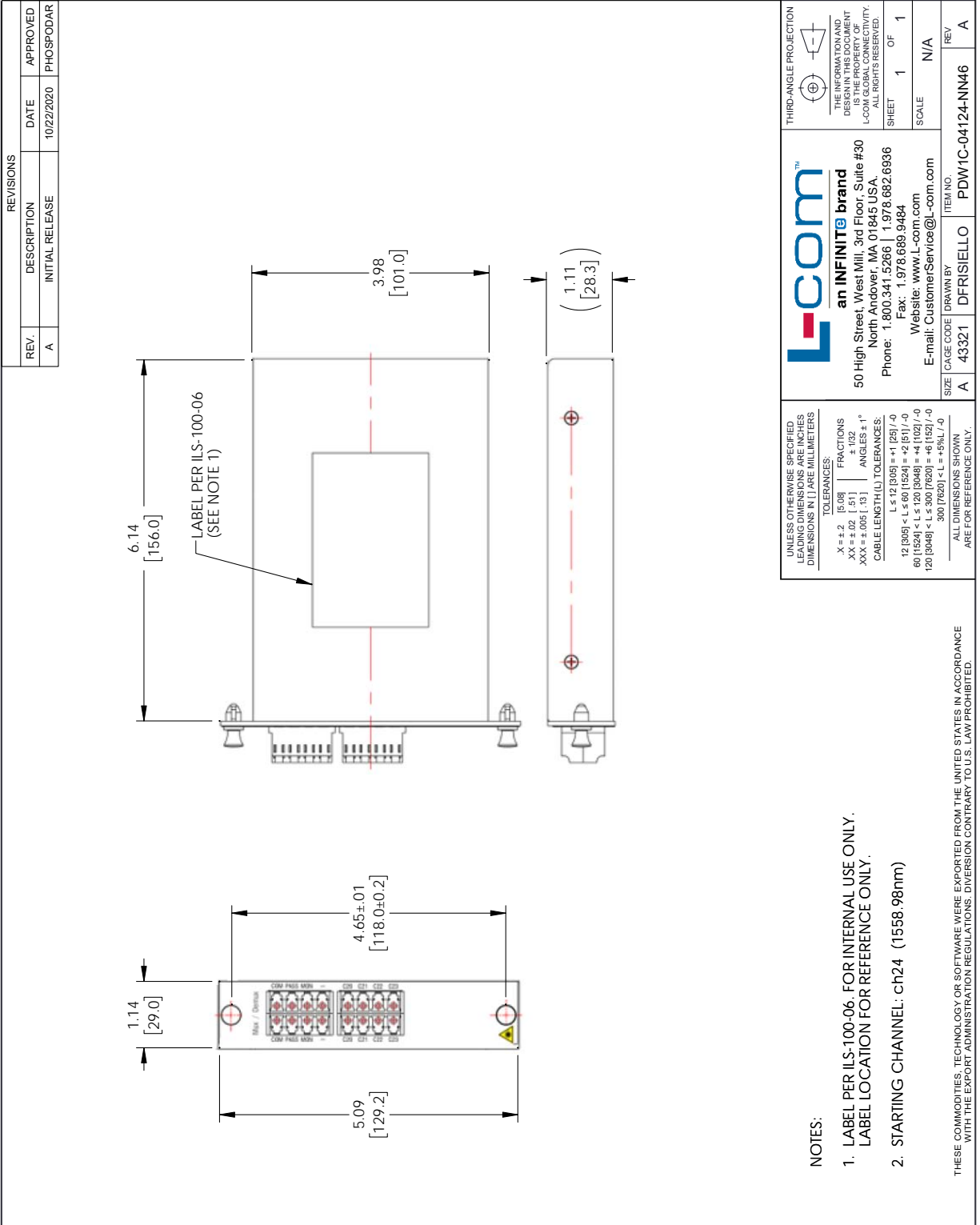
Notes:

Passive DWDM, Plug-In Single LGX Combo Mux&DeMux, 4CH, 100 GHz spacing, starting CH24 (1558.98nm), LC/UPC connectors, with EXP & Mon(1%) from L-com has same day shipment for domestic and International orders. Our portfolio includes coaxial cable assemblies, connectors, adapters and custom products as well as lightning and surge protectors, NEMA rated enclosures, and an RF product line which includes antennas, amplifiers, passive, and active components.

The information contained within this document is accurate to the best of our knowledge and representative of the part described herein. It may be necessary to make modifications to the part and/or the documentation of the part in order to implement improvements. L-com reserves the right to make such changes as required. Unless otherwise stated, all specifications are nominal. L-com does not make any representation or warranty regarding the suitability of the part described herein for any particular purpose, and L-com does not assume liability arising out of the use of any part or document.

Passive DWDM, Plug-In Single LGX Combo Mux&DeMux, 4CH, 100 GHz spacing, starting CH24 (1558.98nm), LC/UPC connectors, with EXP & Mon(1%)

L-com CAD Drawing



REVISIONS		
REV.	DESCRIPTION	DATE
A	INITIAL RELEASE	10/22/2020
		PHOSPODAR

UNLESS OTHERWISE SPECIFIED LEADING DIMENSIONS ARE INCHES DIMENSIONS IN [] ARE MILLIMETERS

TOLERANCES:
 .X = ±.2 [5.08] | FRACTIONS ±.132
 .XX = ±.02 [.51] | ANGLES ± 1°
 .XXX = ±.005 [.13]

CABLE LENGTH (L) TOLERANCES:
 L ≤ 12 [305] = ±.1 [25] / -0
 12 [305] < L ≤ 60 [1524] = ±.2 [51] / -0
 60 [1524] < L ≤ 120 [3048] = ±.4 [102] / -0
 120 [3048] < L ≤ 300 [7620] = ±.6 [152] / -0
 300 [7620] < L = ±.6% L / -0

ALL DIMENSIONS SHOWN ARE FOR REFERENCE ONLY.

L-com™
 an INFINITE brand
 50 High Street, West Mill, 3rd Floor, Suite #30
 North Andover, MA 01845, USA
 Phone: 1.800.341.5266 | 1.978.682.6936
 Fax: 1.978.689.9484
 Website: www.L-com.com
 E-mail: CustomerService@L-com.com

THIRD-ANGLE PROJECTION

THE INFORMATION AND DESIGNATION INDICATED HEREIN ARE THE PROPERTY OF L-COM GLOBAL CONNECTIVITY. ALL RIGHTS RESERVED.

SHEET 1 OF 1

SCALE N/A

ITEM NO. PDW1C-04124-NIN46

REV A

- NOTES:
1. LABEL PER ILS-100-06. FOR INTERNAL USE ONLY. LABEL LOCATION FOR REFERENCE ONLY.
 2. STARTING CHANNEL: ch24 (1558.98nm)

THESE COMMODITIES, TECHNOLOGY OR SOFTWARE WERE EXPORTED FROM THE UNITED STATES IN ACCORDANCE WITH THE EXPORT ADMINISTRATION REGULATIONS. DIVERSION CONTRARY TO U.S. LAW PROHIBITED.

T-Rev:0