

MPO w/ pins to LC fanout fiber optic cable assembly, 2.0mm diameter, 24 fiber, OM4 50/125µm Multimode, 10 meter



## MPM24OM4-20LCR-10

### Features

- 24 Fiber MPO w/ pins (male) to LC Fan-out for server-to-switch and other link aggregation
- 3mm Diameter OFNP (Plenum Rated) Jacket complies with strict building codes
- OM4 40GB 50/125µm Multimode cabling for aggregation of links
- Fully compatible with US Conec MTP products

### Applications

- Ethernet
- LAN
- Server Farms
- Voice/Video/Data

### Description

The MPM24OM4-20LCR-10 from L-com is a fan-out cable assembly that comes with an MPO (w/ pins) to LC/UPC connector configuration. This fiber optic cable features an OFNP-rated PVC jacket and has a cable diameter of 3 mm. Our fan-out cable is suitable for applications such as Ethernet, LAN, server farms, and voice/video/data. This aqua blue fiber optic cable assembly is available in a length of 10 meters and can withstand temperatures ranging from -10 to 60 degrees C.

Our MPO (w/ pins) male to LC cable comes with a multimode OM4 fiber and has a fiber diameter of 50/125 µm. L-com's MPM24OM4-20LCR-10 fan-out cable assembly has a breakout diameter of 2 mm and is ideal for making connections within rack mounted or wall mounted fiber enclosures. Our fiber optic cable assembly can be customized in different lengths to fit specific installation needs, ensuring efficient network management in high-density setups without compromising delivery time or quality. Additional dimensions, specifications, and CAD drawings for this 24 fiber cable can be found on its downloadable PDF datasheet.

L-com has one of the largest in-stock selections of fiber optic cable assemblies for international and domestic orders. Make your online purchase right now to take advantage of our same-business-day shipping. We are committed to delivering excellent service to support our customers in maintaining the continuity and reliability of their networks. For further information on similar products, our expert technical support and knowledgeable sales team can help you get the ideal multimode OM4 fan-out cable for your requirements.

### Configuration

|                     |                   |
|---------------------|-------------------|
| Function            | Fan-out           |
| Cable Type          | Base-24 Multimode |
| Mode                | Multimode         |
| Mode Class          | OM4               |
| Fiber Diameter      | 50/125 µm         |
| Connection 1 Type   | MPO (w/ pins)     |
| Connection 1 Gender | Male              |
| Connection 1 Polish | UPC               |
| Connection 2 Type   | LC                |
| Connection 2 Polish | UPC               |
| Cable Color         | Aqua Blue         |

### Optical Specifications

| Description                  | Minimum | Typical | Maximum | Units |
|------------------------------|---------|---------|---------|-------|
| Return Loss - MPO            | 20      |         |         | dB    |
| Insertion Loss - MPO         |         |         | 0.35    | dB    |
| Return Loss - LC, ST, SC, FC | 30      |         |         | dB    |

MPO w/ pins to LC fanout fiber optic cable assembly, 2.0mm diameter, 24 fiber, OM4 50/125µm Multimode, 10 meter



## MPM24OM4-20LCR-10

### Optical Specifications

| Description                     | Minimum | Typical | Maximum | Units |
|---------------------------------|---------|---------|---------|-------|
| Insertion Loss - LC, ST, SC, FC |         |         | 0.2     | dB    |

### Mechanical Specifications

#### Cable Assembly

|                |                  |
|----------------|------------------|
| Length         | 10 m [393.70 in] |
| Width/Diameter | 3 mm             |
| Weight         | 453.59 g [1 lbs] |

#### Cable

|  |         |
|--|---------|
| Cable Type                                 | Fan-out |
| Polarity                                   | Type C  |
| Breakout Diameter                          | 2 mm    |
| Static Bend Radius                         | 30 mm   |
| Dynamic Bend Radius                        | 60 mm   |
| Max Crush Resistance, Short Term (N/100mm) | 400     |
| Max Crush Resistance, Long Term (N/100mm)  | 100     |

### Connectors

| Description      | Connector 1        | Connector 2 |
|------------------|--------------------|-------------|
| Type             | MPO (w/ pins) Male | LC          |
| Configuration    | Straight           | Straight    |
| Connector Polish | UPC                | UPC         |

### Environmental Specifications

|                                |                  |
|--------------------------------|------------------|
| Operating Range Temperature    | -10 to +60 deg C |
| Storage Range Temperature      | -10 to +70 deg C |
| Ingress Protection (IP) Rating | Non-Rated        |

**Compliance Certifications** (see [product page](#) for current document)

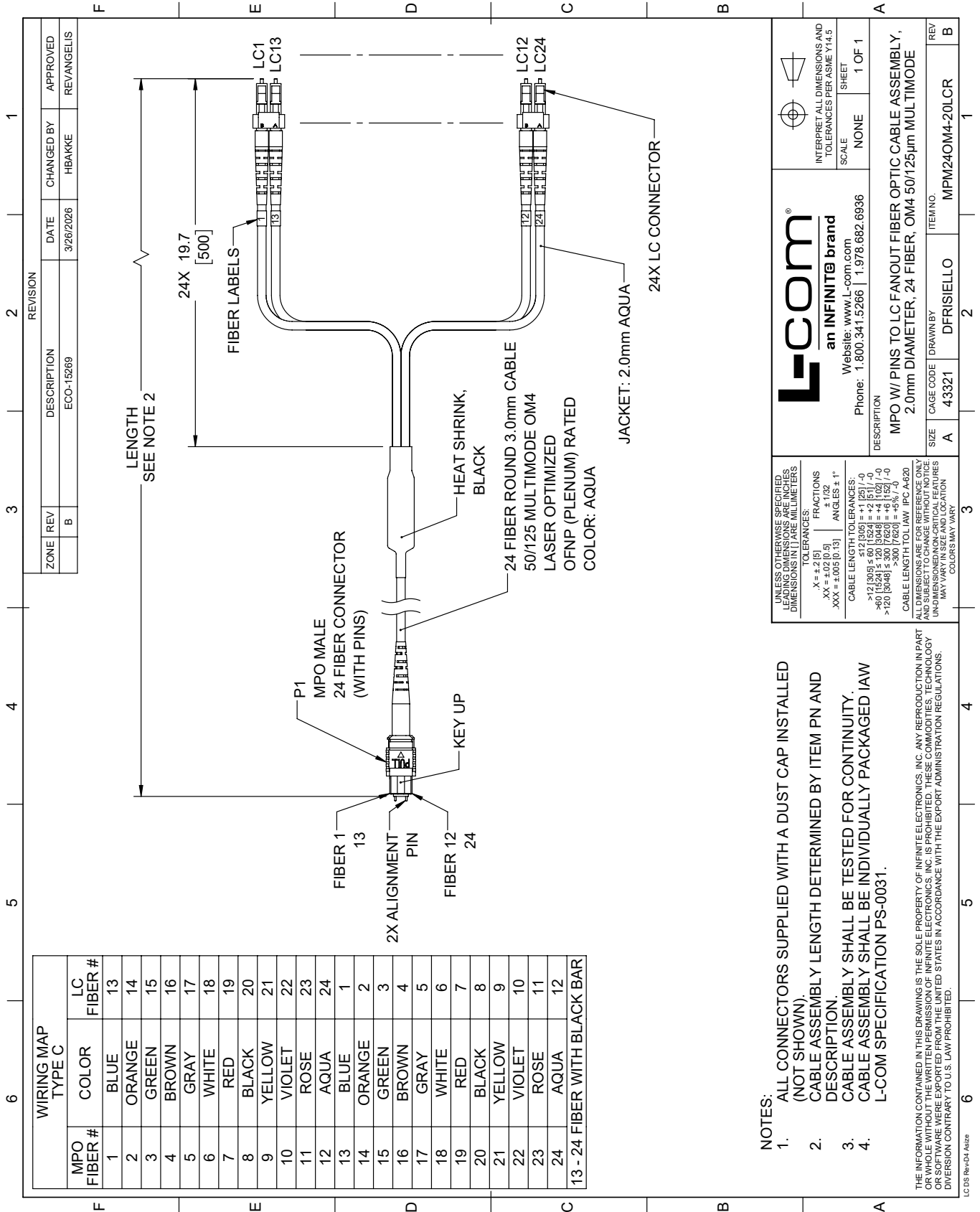
### Plotted and Other Data

Notes:



# MPM24OM4-20LCR-10 CAD Drawing

MPO w/ pins to LC fanout fiber optic cable assembly, 2.0mm diameter, 24 fiber, OM4 50/125µm Multimode, 10 meter



**L-com**  
an INFINITE brand  
Website: www.L-com.com  
Phone: 1.800.341.5266 | 1.978.682.6936

INTERPRET ALL DIMENSIONS AND TOLERANCES PER ASME Y14.5

SCALE: NONE  
SHEET: 1 OF 1

DESCRIPTION: MPO W/ PINS TO LC FANOUT FIBER OPTIC CABLE ASSEMBLY, 2.0mm DIAMETER, 24 FIBER, OM4 50/125µm MULTIMODE

SIZE: A  
CAGE CODE: 43321  
DRAWN BY: DFRISIELLO  
ITEM NO.: MPM24OM4-20LCR

REV: B