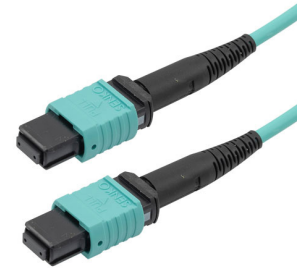


Fiber patch cable MPO female to MPO female,  
12 fiber MMF OM3 type A, LSZH rated, 10 meter



## MPFF12OM3AZ-10

### Features

- Fiber Optic Patch Cable Assembly
- MPO Female to MPO Female
- Cable Type: Multimode OM3
- Cable Jacket: LSZH (Low Smoke, Zero Halogen) rated
- Cable Length: 10 meters

### Applications

- Ethernet
- LAN
- Server Farms
- Voice/Video/Data

### Description

L-com's MPFF12OM3AZ-10 is a fiber optic patch cable assembly that is suitable for Ethernet, LAN, server farms, and voice/video/data applications. This aqua blue fiber optic cable is equipped with MPO (w/ pins) female to MPO (w/ pins) female connectors. Our patch cable assembly has a type A (key up, key down) polarity. This fiber optic cable assembly is available in a length of 10 meters.

This MPO (w/ pins) female to MPO (w/ pins) female cable comes with a multimode OM3 fiber and has a fiber diameter of 50/125µm. The MPFF12OM3AZ-10 fiber optic patch cable from L-com features an LSZH-rated jacket. Our fiber optic cable assembly can be customized in different lengths to fit specific installation needs, ensuring efficient network management in high-density setups without compromising delivery time or quality. Additional dimensions, specifications, and CAD drawings for this cable can be found on its downloadable PDF datasheet.

L-com has one of the largest in-stock selections of fiber optic patch cables for international and domestic orders. Make your online purchase right now to take advantage of our same-business-day shipping. We are committed to delivering excellent service to support our customers in maintaining the continuity and reliability of their networks. For further information on similar products, our expert technical support and knowledgeable sales team can help you get the ideal multimode OM3 fiber optic cable for your requirements.

### Configuration

Function	Patch
Cable Type	Base-12 Multimode
Mode	Multimode
Mode Class	OM3
Fiber Diameter	50/125 µm
Connection 1 Type	MPO (w/o pins)
Connection 1 Gender	Female
Connection 1 Polish	PC
Connection 2 Type	MPO (w/o pins)
Connection 2 Gender	Female
Connection 2 Polish	PC
Cable Color	Aqua Blue

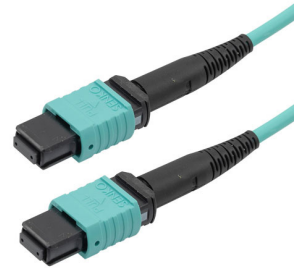
### Optical Specifications

Description	Minimum	Typical	Maximum	Units
Return Loss - MPO	30			dB
Insertion Loss - MPO			0.5	dB

### Mechanical Specifications

<b>Cable Assembly</b>	
Length	10 m [393.70 in]

Fiber patch cable MPO female to MPO female,  
12 fiber MMF OM3 type A, LSZH rated, 10 meter



## MPFF12OM3AZ-10

Width/Diameter 3 mm

### Cable

Cable Type	Patch
Polarity	Type A
Static Bend Radius	30 mm
Dynamic Bend Radius	60 mm
Max Crush Resistance, Short Term (N/100mm)	500
Max Crush Resistance, Long Term (N/100mm)	100

### Connectors

Description	Connector 1	Connector 2
Type	MPO (w/o pins) Female	MPO (w/o pins) Female
Configuration	Straight	Straight
Connector Polish	PC	PC

### Environmental Specifications

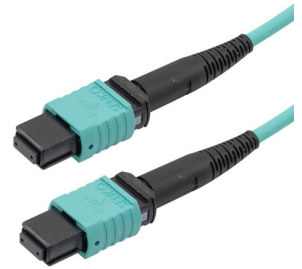
Operating Range Temperature	-20 to +70 deg C
Storage Range Temperature	-40 to +70 deg C

**Compliance Certifications** (see [product page](#) for current document)

### Plotted and Other Data

Notes:

Fiber patch cable MPO female to MPO female,  
12 fiber MMF OM3 type A, LSZH rated, 10 meter



## MPFF12OM3AZ-10

### Typical Performance Data

### How to Order

Part Number Configuration:

**MPFF12OM3AZ**

**-XX**

**UU**

Unit of Measure:

F = Feet

<blank> = Meters

Lengths

Base Number

Example: MPFF12OM3AZ-12 = 12 meters long cable  
MPFF12OM3AZ-10F = 10 feet long cable

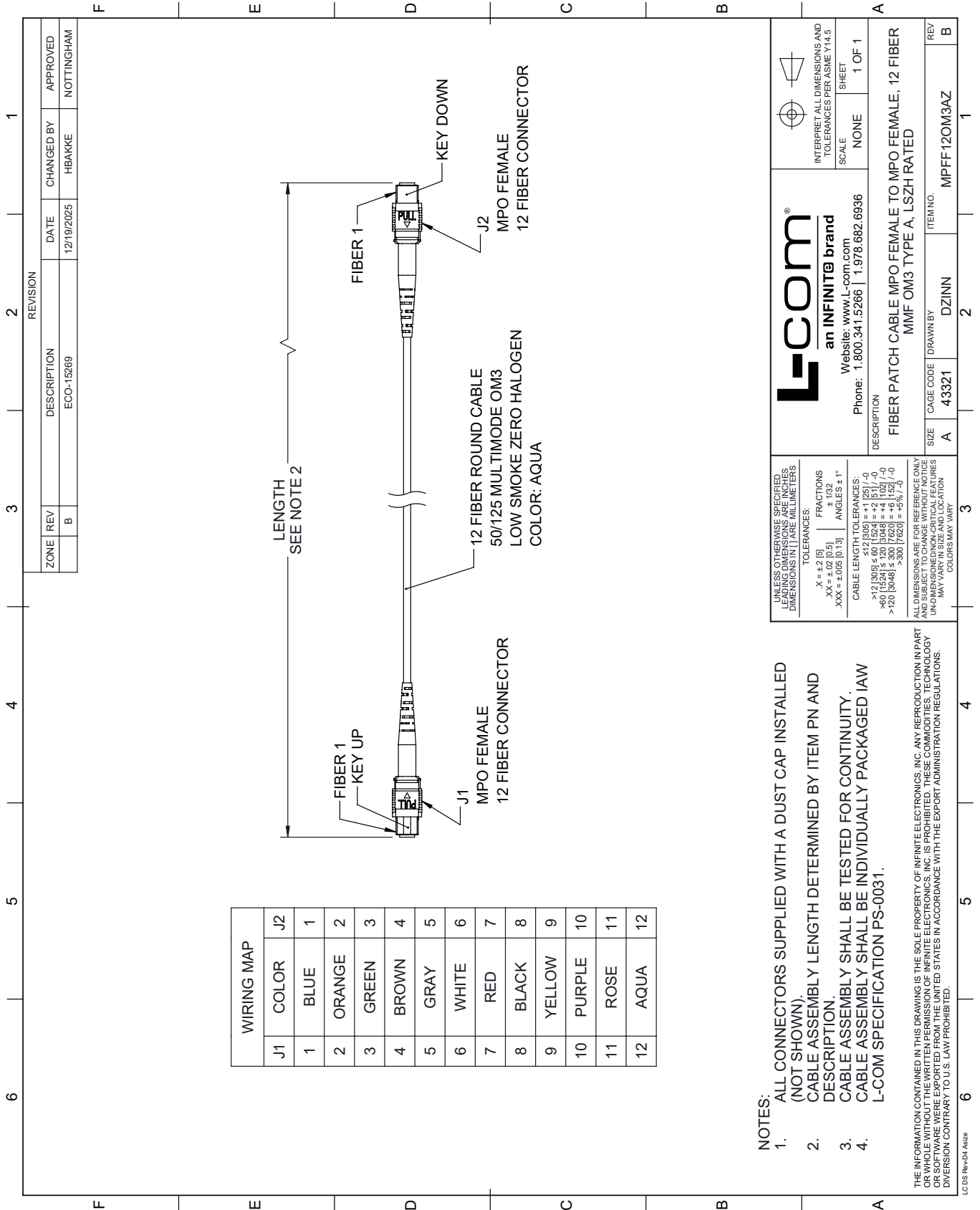
Fiber patch cable MPO female to MPO female, 12 fiber MMF OM3 type A, LSZH rated, 10 meter from L-com has same day shipment for domestic and International orders. Our portfolio includes coaxial cable assemblies, connectors, adapters and custom products as well as lightning and surge protectors, NEMA rated enclosures, and an RF product line which includes antennas, amplifiers, passive, and active components.

URL: <https://www.l-com.com/fiber-patch-cable-mpo-female-mpo-female-12-fiber-mmf-om3-type-a-lszh-rated-1-meter-mpff12om3az-10>

The information contained within this document is accurate to the best of our knowledge and representative of the part described herein. It may be necessary to make modifications to the part and/or the documentation of the part in order to implement improvements. L-com reserves the right to make such changes as required. Unless otherwise stated, all specifications are nominal. L-com does not make any representation or warranty regarding the suitability of the part described herein for any particular purpose, and L-com does not assume liability arising out of the use of any part or document.

# MPFF12OM3AZ-10 CAD Drawing

Fiber patch cable MPO female to MPO female, 12 fiber MMF OM3 type A, LSZH rated, 10 meter



WIRING MAP	
J1	J2
1	1
2	2
3	3
4	4
5	5
6	6
7	7
8	8
9	9
10	10
11	11
12	12

**NOTES:**

1. ALL CONNECTORS SUPPLIED WITH A DUST CAP INSTALLED (NOT SHOWN).
2. CABLE ASSEMBLY LENGTH DETERMINED BY ITEM PN AND DESCRIPTION.
3. CABLE ASSEMBLY SHALL BE TESTED FOR CONTINUITY.
4. CABLE ASSEMBLY SHALL BE INDIVIDUALLY PACKAGED IAW L-COM SPECIFICATION PS-0031.

THE INFORMATION CONTAINED IN THIS DRAWING IS THE SOLE PROPERTY OF INFINITE ELECTRONICS, INC. ANY REPRODUCTION IN PART OR WHOLE WITHOUT THE WRITTEN PERMISSION OF INFINITE ELECTRONICS, INC. IS PROHIBITED. THESE COMMODITIES, TECHNOLOGY OR SOFTWARE WERE EXPORTED FROM THE UNITED STATES IN ACCORDANCE WITH THE EXPORT ADMINISTRATION REGULATIONS. DIVISION CONTRARY TO U.S. LAW PROHIBITED.

LC 05 Rev-D4 Asize

REVISION		DATE	CHANGED BY	APPROVED
ZONE	REV	DESCRIPTION		
	B	ECO-15269	HBAKKE	NOTTINGHAM

<p><b>L-com</b> an INFINITE brand</p> <p>Website: <a href="http://www.L-com.com">www.L-com.com</a> Phone: 1.800.341.5266   1.978.682.6936</p>		<p>INTERPRET ALL DIMENSIONS AND TOLERANCES PER ASME Y14.5</p> <p>SCALE: NONE SHEET: 1 OF 1</p>
<p>UNLESS OTHERWISE SPECIFIED, LEADING DIMENSIONS ARE IN INCHES AND TRAILING DIMENSIONS ARE IN MILLIMETERS.</p> <p>TOLERANCES:                  .X = ±.2 (5)                  .XX = ±.02 (0.5)                  .XXX = ±.005 (0.13)</p> <p>FRACTIONS: ±.1/32                  ANGLES: ±1°</p> <p>CABLE LENGTH TOLERANCES:                  &gt;12 (305) ≤ 60 (1524) = ±.1 (25) / -0                  &gt;60 (1524) ≤ 120 (3048) = ±.4 (102) / -0                  &gt;120 (3048) ≤ 300 (7620) = ±.1 (25) / -0                  &gt;300 (7620) = ±.5 (12.7)</p>		<p>DESCRIPTION                  FIBER PATCH CABLE MPO FEMALE TO MPO FEMALE, 12 FIBER MMF OM3 TYPE A, LSZH RATED</p>
SIZE	CAGE CODE	ITEM NO.
A	43321	MPFF12OM3AZ
REV	DRAWN BY	REV
B	DZINN	B