

Fiber Breakout Conversion, MPO24 no pins to 3xMPO8 no pins, OM5 50/125µm Multimode, LSZH Jacket, Lime, 3 meter



MPF24-MPF308OM5Z-3

Features

- Optimized for fiber count conversions and redistributions
- Converts 100g to 3x40G & 300G to 3x100G
- OM5 50/125µm Multimode
- LSZH rated jacket

Applications

- QSFP breakout
- Cassette-free MPO architectures

Description

The MPF24-MPF308OM5Z-3 from L-com is a breakout conversion cable that comes with a MPO24 (no pins) to 3xMPO8 (no pins) connector configuration. This lime green fiber optic cable with 24 fibers features an LSZH-rated PE + EVA jacket and has maximum insertion loss of 0.75 dB. Our conversion cable is available in a length of 3 meters and is suitable for applications such as QSFP breakout and cassette-free MPO architectures.

Our MPO (w/o pins) female to MPO (w/o pins) female conversion cable comes with a multimode OM5 fiber and has a fiber diameter of 50/125 µm. L-com's MPO connectors are fully compatible with US Conec MTP products. With an operating temperature range of -40 to 75 degrees C, this fiber optic cable assembly provides reliable performance across diverse conditions.

L-com's MPF24-MPF308OM5Z-3 fiber optic conversion cable has a cable diameter of 3.8 mm and a breakout diameter of 3 mm. Our fiber optic cable assembly can be customized in different lengths to fit specific installation needs, ensuring efficient network management in high-density setups without compromising delivery time or quality. Additional dimensions, specifications, and CAD drawings for this MPF24-MPF308OM5Z-3 breakout conversion cable can be found on its downloadable PDF datasheet.

L-com has one of the largest in-stock selections of fiber optic cable assemblies for international and domestic orders. Make your online purchase right now to take advantage of our same-business-day shipping. We are committed to delivering excellent service to support our customers in maintaining the continuity and reliability of their networks. For further information on similar products, our expert technical support and knowledgeable sales team can help you get the ideal multimode OM5 fiber optic conversion cable for your requirements.

Configuration

| | |
|---------------------|---------------------|
| Function | Breakout Conversion |
| Cable Type | Base-24 Multimode |
| Mode | Multimode |
| Mode Class | OM5 |
| Fiber Diameter | 50/125 µm |
| Connection 1 Type | MPO (w/o pins) |
| Connection 1 Gender | Female |
| Connection 1 Polish | UPC |
| Connection 2 Type | MPO (w/o pins) |
| Connection 2 Gender | Female |
| Connection 2 Polish | UPC |
| Cable Color | Lime Green |

Optical Specifications

| Description | Minimum | Typical | Maximum | Units |
|-------------------|---------|---------|---------|-------|
| Return Loss - MPO | 20 | | | dB |

Fiber Breakout Conversion, MPO24 no pins to 3xMPO8 no pins, OM5 50/125µm Multimode, LSZH Jacket, Lime, 3 meter



MPF24-MPF308OM5Z-3

Optical Specifications

| Description | Minimum | Typical | Maximum | Units |
|----------------------|---------|---------|---------|-------|
| Insertion Loss - MPO | | | 0.75 | dB |

Mechanical Specifications

Cable Assembly

| | |
|----------------|-----------------|
| Length | 3 m [118.11 in] |
| Width/Diameter | 3.8 mm |

Cable

| | |
|--|---------------------|
| Cable Type | Breakout Conversion |
| Breakout Diameter | 3 mm |
| Static Bend Radius | 38 mm |
| Dynamic Bend Radius | 76 mm |
| Max Crush Resistance, Short Term (N/100mm) | 500 |
| Max Crush Resistance, Long Term (N/100mm) | 100 |

Connectors

| Description | Connector 1 | Connector 2 |
|------------------|-----------------------|-----------------------|
| Type | MPO (w/o pins) Female | MPO (w/o pins) Female |
| Configuration | Straight | |
| Connector Polish | UPC | UPC |

Environmental Specifications

| | |
|--------------------------------|------------------|
| Operating Range Temperature | -40 to +75 deg C |
| Storage Range Temperature | -40 to +85 deg C |
| Ingress Protection (IP) Rating | Non-Rated |

Compliance Certifications (see [product page](#) for current document)

Plotted and Other Data

Notes:

Fiber Breakout Conversion, MPO24 no pins to 3xMPO8 no pins, OM5 50/125µm Multimode, LSZH Jacket, Lime, 3 meter



MPF24-MPF308OM5Z-3

Typical Performance Data

How to Order



Example: MPF24-MPF308OM5Z-12 = 12 meters long cable
 MPF24-MPF308OM5Z-10F = 10 feet long cable

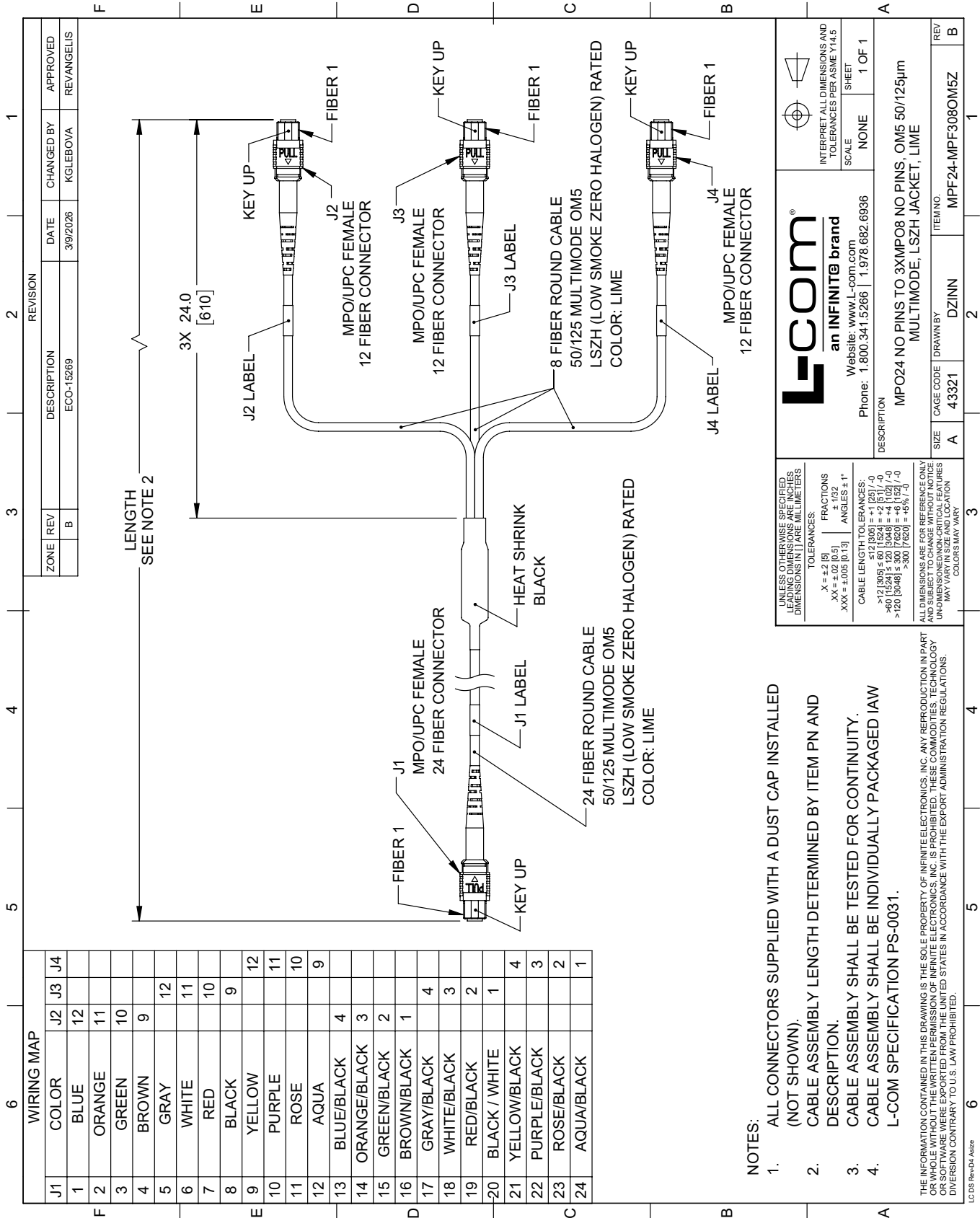
Fiber Breakout Conversion, MPO24 no pins to 3xMPO8 no pins, OM5 50/125µm Multimode, LSZH Jacket, Lime, 3 meter from L-com has same day shipment for domestic and International orders. Our portfolio includes coaxial cable assemblies, connectors, adapters and custom products as well as lightning and surge protectors, NEMA rated enclosures, and an RF product line which includes antennas, amplifiers, passive, and active components.

URL: <https://www.l-com.com/fiber-optic-mpo24-no-pins-to-3xmpo8-no-pins-om5-50-125um-multimode-lszh-jacket-lime-green-3-meter>

The information contained within this document is accurate to the best of our knowledge and representative of the part described herein. It may be necessary to make modifications to the part and/or the documentation of the part in order to implement improvements. L-com reserves the right to make such changes as required. Unless otherwise stated, all specifications are nominal. L-com does not make any representation or warranty regarding the suitability of the part described herein for any particular purpose, and L-com does not assume liability arising out of the use of any part or document.

MPF24-MPF308OM5Z-3 CAD Drawing

Fiber Breakout Conversion, MPO24 no pins to 3xMPO8 no pins, OM5 50/125µm Multimode, LSZH Jacket, Lime, 3 meter



L-com
 an INFINITE brand
 Website: www.L-com.com
 Phone: 1.800.341.5266 | 1.978.682.6936

INTERPRET ALL DIMENSIONS AND TOLERANCES PER ASME Y14.5

SCALE: NONE
 SHEET: 1 OF 1

DESCRIPTION: MPO24 NO PINS TO 3XMPO8 NO PINS, OM5 50/125µm MULTIMODE, LSZH JACKET, LIME

ITEM NO.: MPF24-MPF308OM5Z

SIZE: A
 CAGE CODE: 43321
 DRAWN BY: DZINN