

RP SMA Male Right Angle Connector Crimp/Solder Attachment
for RG174, RG316, RG188, 0.100 inch, LMR-100



LCCN45950

Configuration

- SMA Male Reverse Polarity Connector
- MIL-STD-348
- 50 Ohms
- Right Angle Body Geometry
- RG174, RG316, RG188, .100 inch, LMR-100 Interface Type
- Crimp/Solder Attachment
- 5/16 inch Hex

Features

- Gold Plated Contact
- Contact plating according to MIL-G-45204
- Reverse Polarity

Applications

- General Purpose Test
- Custom Cable Assemblies

Description

L-com's LCCN45950 Right Angle, SMA, Standard, Connector is part of our full line of RF components available for same-day shipping. The male reverse polarity configuration uses a male connector body with a female inner contact receptacle. Its right angle body geometry allows for easier connections in tight spaces. Our reverse polarity SMA male right angle connector LCCN45950 datasheet specifications and drawing with dimensions are shown below in this PDF. L-com's broad catalog of RF, microwave and millimeter wave connectors allows designers to configure and customize their signal connections however they like. Whether the need is to provide an I/O for a board design, or simply create a custom cable assembly configuration, L-com has the right connector for the job. L-com can also expertly build your custom cable assemblies for you and ship same-day.

Mechanical Specifications

Size

Length	0.61 in [15.49 mm]
Width	0.31 in [7.92 mm]
Height	0.74 in [18.80 mm]
Weight	0.01 lbs [4.99 g]
Mating Torque	3 to 5 in-lbs 0.34 to 0.57 Nm

Material Specifications

Description	Material	Plating
Contact		Gold MIL-G-45204
Insulation	PTFE	
Body	Brass	Nickel QQ-N-290
Coupling Nut	Brass	Nickel QQ-N-290

Click the following link (or enter part number in "SEARCH" on website) to obtain additional part information including price, inventory and certifications:
[RP SMA Male Right Angle Connector Crimp/Solder Attachment for RG174, RG316, RG188, 0.100 inch, LMR-100 LCCN45950](#)

RP SMA Male Right Angle Connector Crimp/Solder Attachment
for RG174, RG316, RG188, 0.100 inch, LMR-100



LCCN45950

Environmental Specifications

Compliance Certifications (see [product page](#) for current document)

Plotted and Other Data

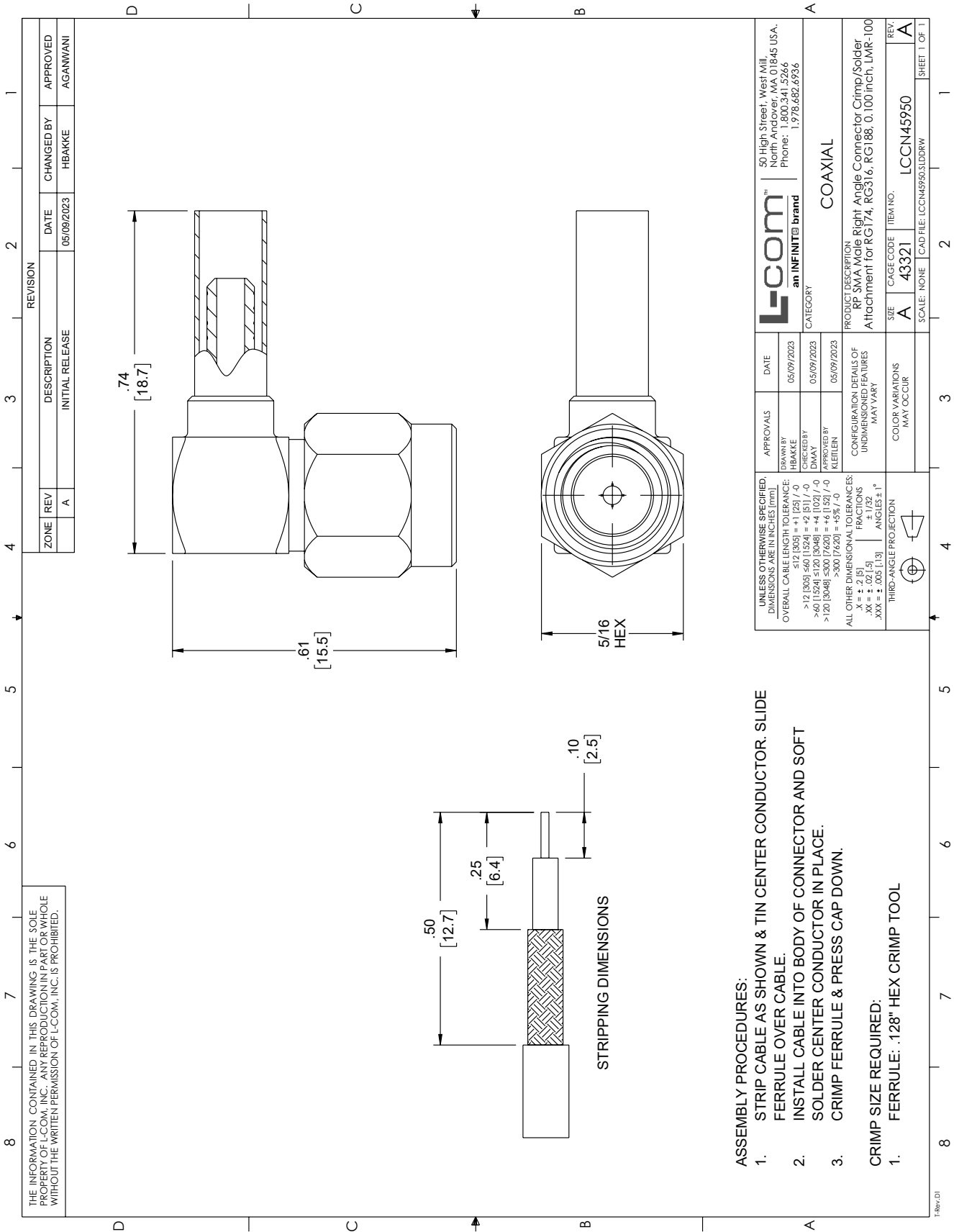
RP SMA Male Right Angle Connector Crimp/Solder Attachment for RG174, RG316, RG188, 0.100 inch, LMR-100 from L-com has same day shipment for domestic and International orders. Our portfolio includes coaxial cable assemblies, connectors, adapters and custom products as well as lightning and surge protectors, NEMA rated enclosures, and an RF product line which includes antennas, amplifiers, passive, and active components. Click the following link (or enter part number in "SEARCH" on website) to obtain additional part information including price, inventory and certifications: RP SMA Male Right Angle Connector Crimp/Solder Attachment for RG174, RG316, RG188, 0.100 inch, LMR-100 LCCN45950

URL: <https://www.l-com.com/rp-sma-male-right-angle-connector-crimp-solder-attachment-rg174-rg316-rg188-0.100-inch-lmr-100-lccn45950-p.aspx>

The information contained within this document is accurate to the best of our knowledge and representative of the part described herein. It may be necessary to make modifications to the part and/or the documentation of the part in order to implement improvements. L-com reserves the right to make such changes as required. Unless otherwise stated, all specifications are nominal. L-com does not make any representation or warranty regarding the suitability of the part described herein for any particular purpose, and L-com does not assume liability arising out of the use of any part or document. The information contained within this document is accurate to the best of our knowledge and representative of the part described herein. It may be necessary to make modifications to the part and/or the documentation of the part in order to implement improvements. L-com reserves the right to make such changes as required. Unless otherwise stated, all specifications are nominal. L-com does not make any representation or warranty regarding the suitability of the part described herein for any particular purpose, and L-com does not assume liability arising out of the use of any part or document.

RP SMA Male Right Angle Connector Crimp/Solder Attachment for RG174, RG316, RG188, 0.100 inch, LMR-100

L-com CAD Drawing



ZONE	REV	DESCRIPTION	DATE	CHANGED BY	APPROVED
	A	INITIAL RELEASE	05/09/2023	HBAKKE	AGANWANI

L-com an INFINITE brand CATEGORY: COAXIAL		APPROVALS DRAWN BY: HBAKKE CHECKED BY: DMAY APPROVED BY: KLEFLEN	DATE 05/09/2023 05/09/2023 05/09/2023	50 High Street, West Mill, North Andover, MA 01845 USA, Phone: 1.800.341.5266 1.978.682.6936
PRODUCT DESCRIPTION: RP SMA Male Right Angle Connector Crimp/Solder Attachment for RG174, RG316, RG188, 0.100 inch, LMR-100		CONFIGURATION DETAILS OF UNDIMENSIONED FEATURES MAY VARY		SCALE: NONE CAD FILE: LCCN45950.3.DDRW
SIZE: A CAGE CODE: 43321 ITEM NO.: LCCN45950	COLOR VARIATIONS: MAY OCCUR			

THE INFORMATION CONTAINED IN THIS DRAWING IS THE SOLE PROPERTY OF L-COM, INC.. ANY REPRODUCTION IN PART OR WHOLE WITHOUT THE WRITTEN PERMISSION OF L-COM, INC. IS PROHIBITED.

T-Rev: 01