

SMA Female Connector Crimp/Solder Attachment for RG8X, 0.240 inch, LMR-240, LMR-240-DB, LMR-240-UF, B7808A



**LCCN3244**

**Configuration**

- SMA Female Connector
- 50 Ohms
- Straight Body Geometry
- Connector Interface Types: RG8X, .240 inch, LMR-240, LMR-240-DB, LMR-240-UF, B7808A

**Features**

- Max. Operating Frequency 12.4 GHz
- Gold Plated Beryllium Contact

**Applications**

- General Purpose Test
- Custom Cable Assemblies

**Description**

L-com's LCCN3244 SMA female connector with crimp/solder attachment for RG8X, 0.240 inch, LMR-240, LMR240-DB, LMR-240-UF and B7808A is part of our full line of RF components available for same-day shipping. Our SMA female connector operates up to a maximum frequency of 12.4 GHz. Our SMA female connector LCCN3244 datasheet specifications and drawing with dimensions are shown below in this PDF. L-com's broad catalog of RF, microwave and millimeter wave connectors allows designers to configure and customize their signal connections however they like. Whether the need is to provide an I/O for a board design, or simply create a custom cable assembly configuration, L-com has the right connector for the job. L-com can also expertly build your custom cable assemblies for you and ship same-day

**Electrical Specifications**

Description	Minimum	Typical	Maximum	Units
Frequency Range	DC		12.4	GHz
Impedance		50		Ohms

**Mechanical Specifications**

**Size**

Length	0.97 in [24.64 mm]
Width	0.313 in [7.95 mm]
Height	0.313 in [7.95 mm]
Weight	0.02 lbs [9.07 g]

**Material Specifications**

Description	Material	Plating
Contact	Beryllium Copper	Gold
Insulation	PTFE	
Body	Brass	Gold

**Environmental Specifications**

**Temperature**

Operating Range	-65 to +165 deg C
-----------------	-------------------

SMA Female Connector Crimp/Solder Attachment for RG8X,  
0.240 inch, LMR-240, LMR-240-DB, LMR-240-UF, B7808A



## LCCN3244

**Compliance Certifications** (see [product page](#) for current document)

### Plotted and Other Data

Notes:

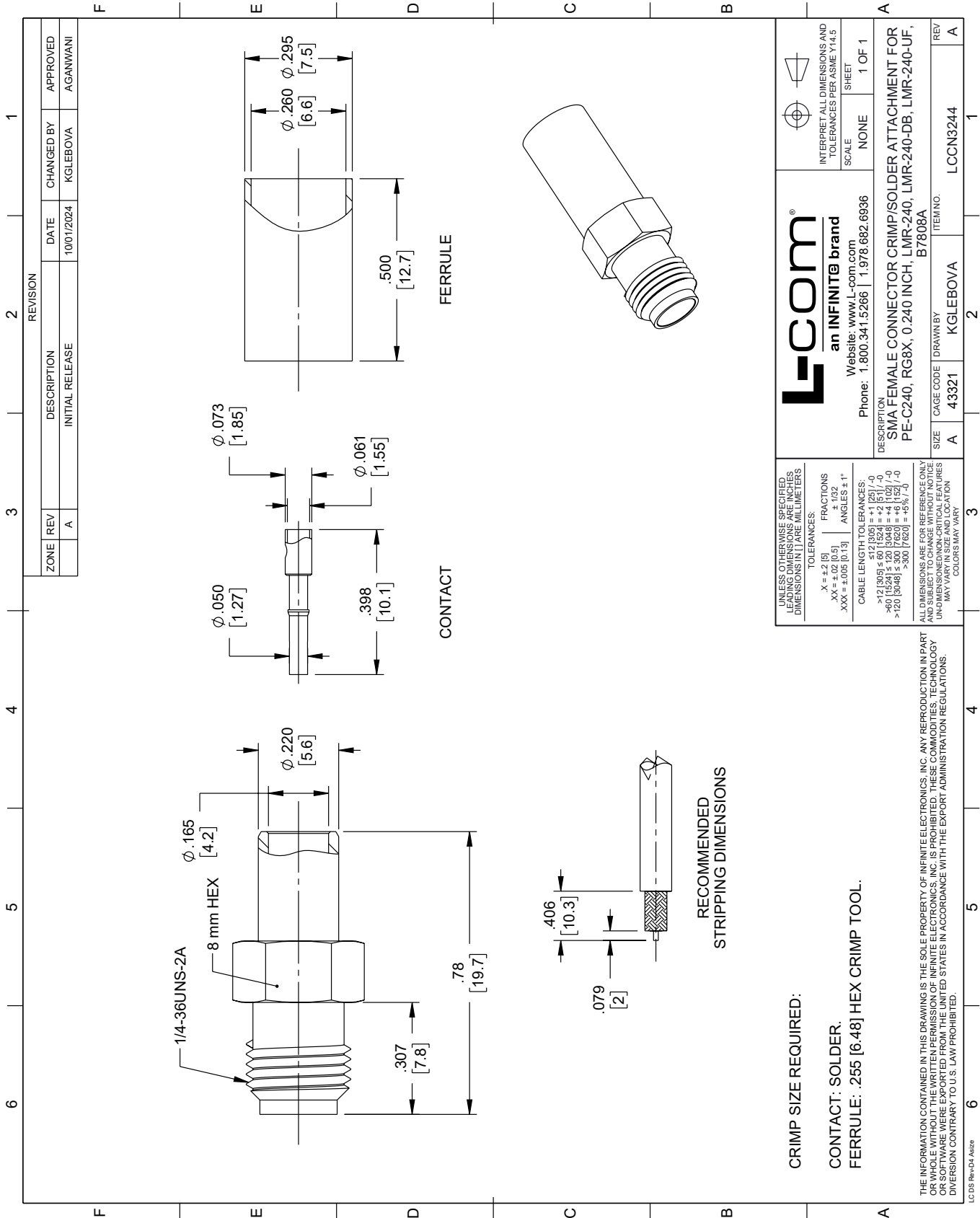
SMA Female Connector Crimp/Solder Attachment for RG8X, 0.240 inch, LMR-240, LMR-240-DB, LMR-240-UF, B7808A from L-com has same day shipment for domestic and International orders. Our portfolio includes coaxial cable assemblies, connectors, adapters and custom products as well as lightning and surge protectors, NEMA rated enclosures, and an RF product line which includes antennas, amplifiers, passive, and active components.

URL: <https://www.l-com.com/sma-female-connector-crimp-solder-attachment-rg8x-0.240-inch-lmr-240-lmr-240-db-lmr-240-uf-b7808a-lccn3244-p.aspx>

The information contained within this document is accurate to the best of our knowledge and representative of the part described herein. It may be necessary to make modifications to the part and/or the documentation of the part in order to implement improvements. L-com reserves the right to make such changes as required. Unless otherwise stated, all specifications are nominal. L-com does not make any representation or warranty regarding the suitability of the part described herein for any particular purpose, and L-com does not assume liability arising out of the use of any part or document.

# LCCN3244 CAD Drawing

SMA Female Connector Crimp/Solder Attachment for RG8X, 0.240 inch, LMR-240, LMR-240-DB, LMR-240-UF, B7808A



**L-com**  
an INFINITE brand  
Website: www.L-com.com  
Phone: 1.800.341.5266 | 1.978.682.6936

INTERPRET ALL DIMENSIONS AND TOLERANCES PER ASME Y14.5

SCALE: NONE  
SHEET: 1 OF 1

DESCRIPTION: SMA FEMALE CONNECTOR CRIMP/SOLDER ATTACHMENT FOR PE-C240, RG8X, 0.240 INCH, LMR-240, LMR-240-DB, LMR-240-UF, B7808A

REV	A
ITEM NO.	LCCN3244
SIZE	A
CAGE CODE	43321
DRAWN BY	KGLEBOVA