

MCX Plug Right Angle Connector Crimp/Solder Attachment For RG178



**LCCN3034**

**Configuration**

- MCX Plug Connector
- CECC 22220
- 50 Ohms
- Right Angle Body Geometry
- RG178 Interface Type
- Crimp/Solder Attachment

**Features**

- Designed to industry standard interface dimensions
- Quality body materials and plating
- Crimp/solder attachment
- Operates to 6 Ghz

**Applications**

- RF Boxes and components
- RF Test Systems
- General Purpose RF Interconnect
- Laboratory applications

**Description**

L-com's MCX plug right angle connector for RG178 coax uses a crimp/solder attachment method. This MCX connector is one of the many RF coaxial connectors in L-com's product line up and like all our products, they will ship the same day. Our MCX plug right angle connector operates up to a maximum frequency of 6 GHz. The specifications and a basic dimensional drawing for LCCN3034 plug right angle MCX connector can be found in this datasheet PDF. L-com's portfolio of RF and microwave connectors allows users to choose from a large number of options when building assemblies to fit their RF interconnect needs. RF cables can be created to fulfill many interconnect applications ranging from In the Box hookup, test equipment connectivity or as part of a system installation. In addition to an offering of RF connectors and coaxial cable, L-com offers both standard and custom cable assemblies to fit a customer's specific needs.

**Electrical Specifications**

Description	Minimum	Typical	Maximum	Units
Frequency Range	DC		6	GHz
Operating Voltage (AC)			170	Vrms
Dielectric Withstanding Voltage (AC)			500	Vrms

**Performance by Frequency**

Description	F1	F2	F3	F4	F5	Units
Frequency Range	DC to 1	1 to 3				GHz
VSWR, Max	1.5:1	1.63:1				

Click the following link (or enter part number in "SEARCH" on website) to obtain additional part information including price, inventory and certifications:  
[MCX Plug Right Angle Connector Crimp/Solder Attachment For RG178 LCCN3034](#)

MCX Plug Right Angle Connector Crimp/Solder Attachment For RG178



**LCCN3034**

**Mechanical Specifications**

**Size**

Length	0.54 in [13.72 mm]
Width/Dia.	0.197 in [5.00 mm]
Height	0.339 in [8.61 mm]
Weight	0.006 lbs [2.72 g]

**Material Specifications**

Description	Material	Plating
Contact	Brass	Gold 30 µin minimum
Insulation	PTFE	
Body	Brass	Nickel 100 µin minimum

**Environmental Specifications**

<b>Temperature</b>	
Operating Range	-40 to +60 °C

**Compliance Certifications** (see [product page](#) for current document)

**Plotted and Other Data**

Notes:

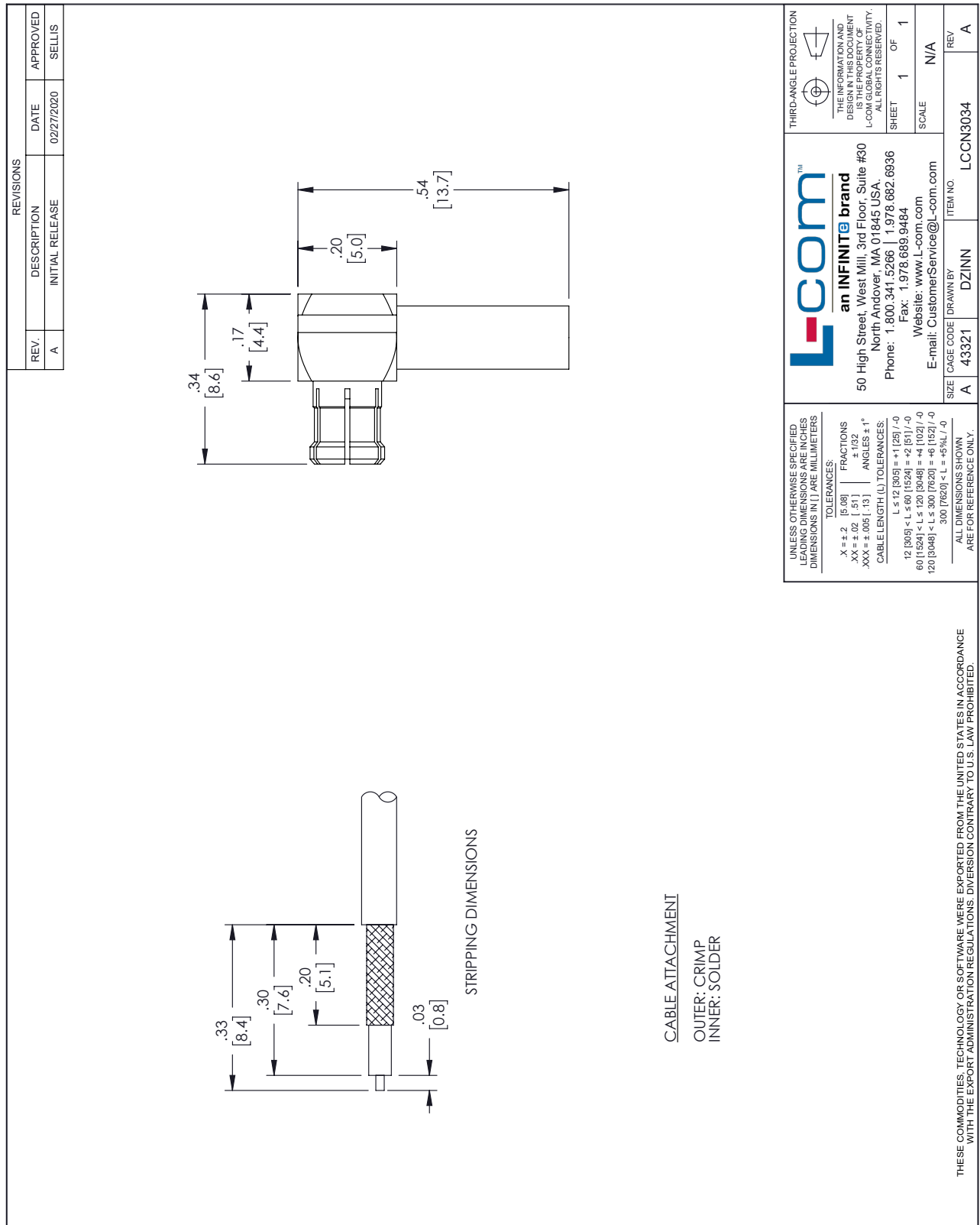
MCX Plug Right Angle Connector Crimp/Solder Attachment For RG178 from L-com has same day shipment for domestic and International orders. Our portfolio includes coaxial cable assemblies, connectors, adapters and custom products as well as lightning and surge protectors, NEMA rated enclosures, and an RF product line which includes antennas, amplifiers, passive, and active components. Click the following link (or enter part number in "SEARCH" on website) to obtain additional part information including price, inventory and certifications: MCX Plug Right Angle Connector Crimp/Solder Attachment For RG178 LCCN3034

URL: <https://www.l-com.com/mcx-plug-standard-rg178-connector-lccn3034-p.aspx>

The information contained within this document is accurate to the best of our knowledge and representative of the part described herein. It may be necessary to make modifications to the part and/or the documentation of the part in order to implement improvements. L-com reserves the right to make such changes as required. Unless otherwise stated, all specifications are nominal. L-com does not make any representation or warranty regarding the suitability of the part described herein for any particular purpose, and L-com does not assume liability arising out of the use of any part or document. It may be necessary to make modifications to the part and/or the documentation of the part in order to implement improvements. L-com reserves the right to make such changes as required. Unless otherwise stated, all specifications are nominal. L-com does not make any representation or warranty regarding the suitability of the part described herein for any particular purpose, and L-com does not assume liability arising out of the use of any part or document.

# MCX Plug Right Angle Connector Crimp/Solder Attachment For RG178

## L-com CAD Drawing



UNLESS OTHERWISE SPECIFIED LEADING DIMENSIONS ARE IN INCHES DIMENSIONS IN [ ] ARE MILLIMETERS

TOLERANCES:

.X = ±.2	[5.08]	FRACTIONS	± 1/32
.XX = ±.02	[.51]	ANGLES	± 1°
.XXX = ±.005	[.13]	CABLE LENGTH (L) TOLERANCES:	
L ≤ 12 [305] = ±1 [25] / -0			
12 [305] < L ≤ 60 [1524] = +4 [102] / -0			
60 [1524] < L ≤ 120 [3048] = +6 [152] / -0			
120 [3048] < L ≤ 300 [7620] = +6 [152] / -0			
300 [7620] < L = +5%L / -0			

ALL DIMENSIONS SHOWN ARE FOR REFERENCE ONLY.

THIRD-ANGLE PROJECTION

THE INFORMATION AND DIMENSIONS SHOWN HEREIN IS THE PROPERTY OF L-COM GLOBAL CONNECTIVITY. ALL RIGHTS RESERVED.

SHEET 1 OF 1

SCALE N/A

ITEM NO. LCCN3034

SIZE A

CAGE CODE 43321

DRAWN BY DZINN

Website: [www.L-com.com](http://www.L-com.com)  
E-mail: [CustomerService@L-com.com](mailto:CustomerService@L-com.com)

an INFINITE brand  
50 High Street, West Mill, 3rd Floor, Suite #30  
North Andover, MA 01845, USA.  
Phone: 1.800.341.5266 | 1.978.682.6936  
Fax: 1.978.689.9484