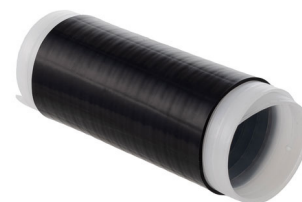


Weatherproof IP68 and IP69 Cable Assembly Boot, 7/16 DIN for LMR-900 to SPX-500, 1.75 to 0.4 Inch Diameter Silicone Cold Shrink



LCCB002

Features

- Weather Resistant, IP-68 rated
- Resistant to UV and Harsh Environment
- Compliant to IEC 60529
- Shrink Ratio Exceeds 2:1
- Highly Flexible & Easily Removable

Applications

- Outdoor Installation of RF Cables
- Wireless Communications
- Protection against Weather

Description

The L-com LCCB002 is a silicone cold shrink cable assembly boot that provides reliable weatherproofing for outdoor installation of RF cable assemblies. This cold shrink weatherproof insulation is suitable for a 7/16 DIN connector attached to LMR-900 to SPX-500 cable. Our cold shrink gives the customer a unique way to add weatherproofing options for already assembled cables. The LCCB002 cold shrink tubing is specifically stocked to be readily available for same business day shipment.

The weather insulation cable boot from L-com is IEC 60529 compliant and conforms to IP68 and IP69 ratings. This silicone weather-proof insulation has shrink-ratio greater than 2:1 and can be used in very confined or dangerous spaces where heat shrinks are more difficult to use. Our LCCB002 cold shrink is a great solution for telecommunication systems where cables and connectors are exposed to UV rays and other harsh outdoor conditions.

The L-com LCCB002 weather insulation cable assembly boot can be used on multiple different coaxial cables with multiple connector options. No special tools are required to install this silicone cold shrink, the tubes can be unwound manually to shrink down the diameter from 1.75 to 0.4 inches to form a tight seal for the cable. This 7/16 DIN connector cold shrink sleeve provides excellent performance because of its durability, flexibility, and longevity.

L-com has in-stock selections of silicone cold shrink tubing and other connector accessories for international and domestic orders. We are a global leader in wired and wireless connectivity products, offering a wide range of solutions across many key industries, including electronics, medical, industrial automation, military, and telecommunication. L-com also stocks a wide selection of other silicone cold shrink cable assembly boots that ship same business day from our warehouse.

Configuration

Body Length, in [mm]	4.92 [124.97]
Outer Diameter, in [mm]	1.75 [44.45]
Inner Diameter, in [mm]	0.4 [10.16]

Compliance Certifications (see [product page](#) for current document)

Plotted and Other Data

Notes:

- Values at +25 °C, sea level

Click the following link (or enter part number in "SEARCH" on website) to obtain additional part information including price, inventory and certifications:
[Weatherproof IP68 and IP69 Cable Assembly Boot, 7/16 DIN for LMR-900 to SPX-500, 1.75 to 0.4 Inch Diameter Silicone Cold Shrink LCCB002](#)

Weatherproof IP68 and IP69 Cable Assembly Boot, 7/16 DIN for
LMR-900 to SPX-500, 1.75 to 0.4 Inch Diameter Silicone Cold Shrink



LCCB002

Weatherproof IP68 and IP69 Cable Assembly Boot, 7/16 DIN for LMR-900 to SPX-500, 1.75 to 0.4 Inch Diameter Silicone Cold Shrink from L-com has same day shipment for domestic and International orders. Our portfolio includes coaxial cable assemblies, connectors, adapters and custom products as well as lightning and surge protectors, NEMA rated enclosures, and an RF product line which includes antennas, amplifiers, passive, and active components.

The information contained within this document is accurate to the best of our knowledge and representative of the part described herein. It may be necessary to make modifications to the part and/or the documentation of the part in order to implement improvements. L-com reserves the right to make such changes as required. Unless otherwise stated, all specifications are nominal. L-com does not make any representation or warranty regarding the suitability of the part described herein for any particular purpose, and L-com does not assume liability arising out of the use of any part or document.

Weatherproof IP68 and IP69 Cable Assembly Boot, 7/16 DIN for LMR-900 to
SPX-500, 1.75 to 0.4 Inch Diameter Silicone Cold Shrink

L-com CAD Drawing

