

Low Loss SMA Male Right Angle to SMA Male Right Angle Cable Assembly using LMR-240-UF Coax With Times Microwave Components with HeatShrink



LCCA9933

Configuration

- Connector 1: SMA Male Right Angle
- Connector 2: SMA Male Right Angle
- Cable Type: LMR-240-UF
- Coax Flex Type: Flexible

Description

L-com's LCCA9933 is a low loss SMA male right angle to SMA male right angle cable assembly using LMR-240-UF coax with Times Microwave components with heatshrink and ships same-day. The LMR-240-UF coax of this SMA cable uses the PE (F) dielectric with a VoP of 84%, resulting in very low insertion loss compared to solid dielectrics. These flexible RF cable assemblies are ideal for applications where flexure is required. Our L-com SMA to SMA cable assembly has a male to male gender configuration with flexible LMR-240-UF series coax and operates to 3 GHz. The double shield of this SMA cable is layered by tinned copper braid over aluminum tape providing shielding effectiveness greater than 90dB. This right angle SMA cable interface on the LMR-240-UF coax allows for easier connections in tight spaces.

Custom versions of this SMA male to SMA male cable, along with the rest of L-com's other RF assemblies, can also be built and shipped same day. Other available RF cable assembly value added services from L-com include connector orientation or clocking, heat shrink booting and custom labeling. RF testing can also be performed to document the electrical performance of your cable assembly. Contact a sales representative for testing or custom RF cable quotes. Part number LCCA9933 L-com Low Loss SMA Male Right Angle to SMA Male Right Angle Cable Assembly using LMR-240-UF Coax With Times Microwave Components with HeatShrink data sheet PDF includes details of the RF product specifications, CAD drawing(s) and dimensions below.

Electrical Specifications

Description	Minimum	Typical	Maximum	Units
Frequency Range	DC		3	GHz
VSWR			1.5:1	
Velocity of Propagation		84		%
RF Shielding	90			dB
Group Delay		1.21 [3.97]		ns/ft [ns/m]
Capacitance		24.2 [79.4]		pF/ft [pF/m]
Inductance		0.06 [0.2]		uH/ft [uH/m]
DC Resistance Inner Conductor		4.28 [14.04]		Ohms/1000ft [Ohms/Km]
DC Resistance Outer Conductor		3.89 [12.76]		Ohms/1000ft [Ohms/Km]
Dielectric Withstanding Voltage (DC)			1,500	Vdc
Jacket Spark			5,000	Vrms
Input Power (Peak)			5.6	KWatts

Specifications by Frequency

Low Loss SMA Male Right Angle to SMA Male
Right Angle Cable Assembly using LMR-240-UF Coax
With Times Microwave Components with HeatShrink



LCCA9933

Part Number	Length	Description	F1	F2	F3	F4	F5	Units	Weight (lbs)
			Frequency	100	250	500	1000	3000	
LCCA9933	Custom Lengths Available	Insertion Loss (Typ.)	0.028	0.046	0.066	0.095	0.168	dB/ft	
			0.1	0.16	0.22	0.32	0.56	dB/m	
LCCA9933-FT1	12 inch	Insertion Loss (Typ.)	0.43	0.45	0.47	0.5	0.57	dB	0.068
LCCA9933-FT2	24 inch	Insertion Loss (Typ.)	0.46	0.5	0.54	0.59	0.74	dB	0.101
LCCA9933-FT3	36 inch	Insertion Loss (Typ.)	0.49	0.54	0.6	0.69	0.91	dB	0.133
LCCA9933-FT5	60 inch	Insertion Loss (Typ.)	0.54	0.63	0.73	0.88	1.24	dB	0.197
LCCA9933-FT25	300 inch	Insertion Loss (Typ.)	1.1	1.55	2.05	2.78	4.6	dB	0.837

The insertion loss data for the base model does not include loss due to the connectors. Each length includes insertion loss due to the connectors.

Loss due to Connector 1: 0.2 dB
 Loss due to Connector 2: 0.2 dB
 Base Weight: 0.068 pounds
 Additional Weight per Inch: 0.00267 pounds

Electrical Specification Notes:
 Values at 25°C, sea level.

Mechanical Specifications

Cable Assembly

Width/Diameter 0.5 in [12.7 mm]
 Weight 0.14 lbs [63.5 g]

Cable

Cable Type LMR-240-UF
 Impedance 50 Ohms
 Inner Conductor Type Stranded
 Inner Conductor Material and Plating Copper
 Dielectric Type PE (F)
 Number of Shields 2
 Shield Layer 1 Aluminum Tape
 Shield Layer 2 Tinned Copper Braid
 Jacket Material TPE
 Jacket Diameter 0.24 in [6.1 mm]
 One Time Minimum Bend Radius 0.75 in [19.05 mm]
 Repeated Minimum Bend Radius 2.5 in [63.5 mm]
 Bending Moment 0.13 lbs-ft [0.18 N-m]

Low Loss SMA Male Right Angle to SMA Male
Right Angle Cable Assembly using LMR-240-UF Coax
With Times Microwave Components with HeatShrink



LCCA9933

Connectors

Description	Connector 1	Connector 2
Type	SMA Male Right Angle	SMA Male Right Angle
Impedance	50 Ohms	50 Ohms
Configuration	Right Angle	Right Angle
Contact Material and Plating	Brass, Gold	Brass, Gold
Dielectric Type	PTFE	PTFE
Body Material and Plating	Stainless Steel, Passivated	Stainless Steel, Passivated

Environmental Specifications

Operating Range Temperature -40 to +85 deg C

Compliance Certifications (see [product page](#) for current document)

Plotted and Other Data

Notes:
Values at 25°C, sea level.

Low Loss SMA Male Right Angle to SMA Male Right Angle Cable Assembly using LMR-240-UF Coax With Times Microwave Components with HeatShrink



LCCA9933

Typical Performance Data

How to Order

Part Number Configuration:

LCCA9933

- xx

uu

Unit of Measure:
cm = Centimeters
<blank> = Inches
Length
Base Number

Example: LCCA9933-12 = 12 inches long cable
LCCA9933-100cm = 100 cm long cable

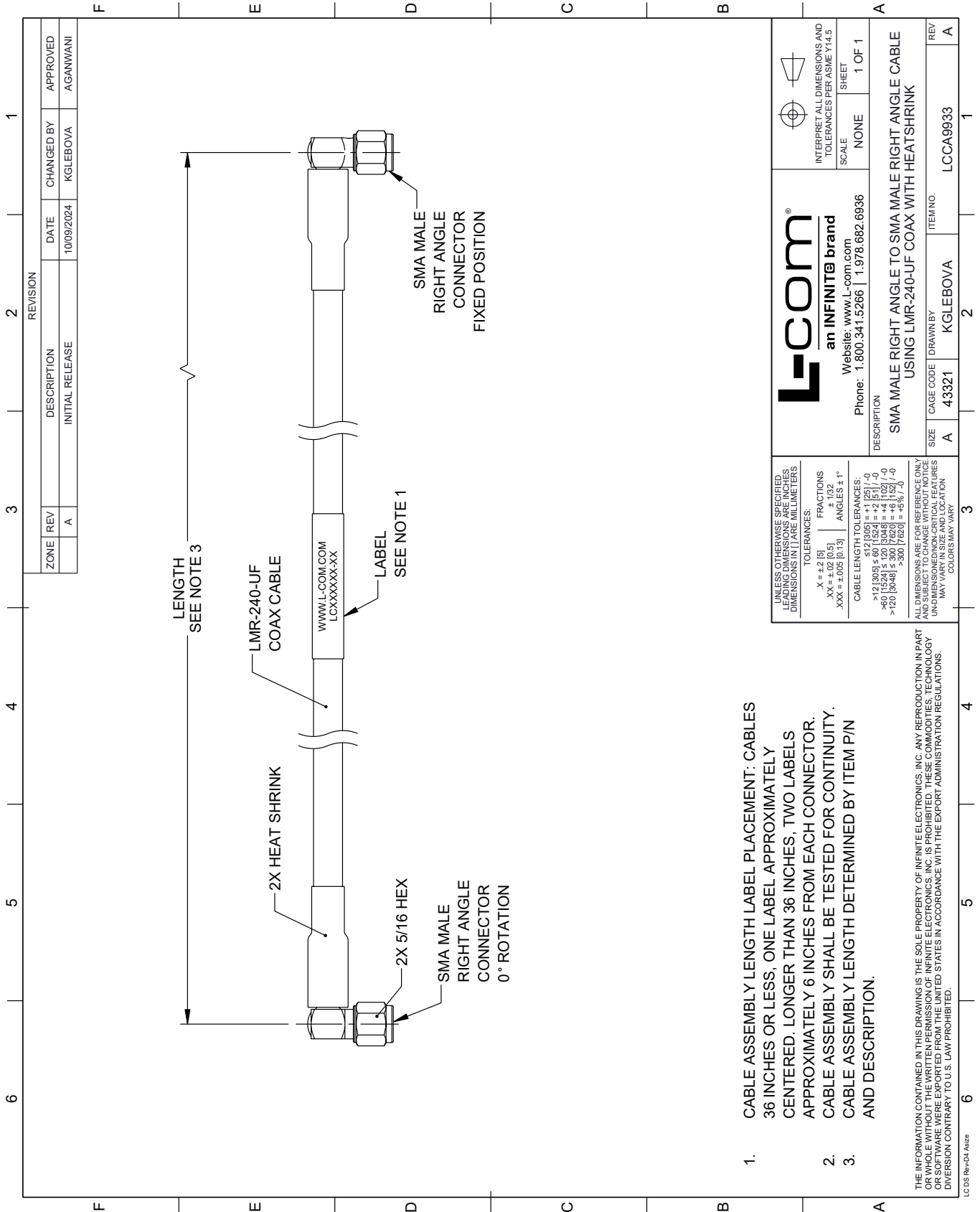
Low Loss SMA Male Right Angle to SMA Male Right Angle Cable Assembly using LMR-240-UF Coax With Times Microwave Components with HeatShrink from L-com has same day shipment for domestic and International orders. Our portfolio includes coaxial cable assemblies, connectors, adapters and custom products as well as lightning and surge protectors, NEMA rated enclosures, and an RF product line which includes antennas, amplifiers, passive, and active components.

URL: <https://www.l-com.com/sma-male-sma-male-cable-assembly-invalid-lcca9933-p.aspx>

The information contained within this document is accurate to the best of our knowledge and representative of the part described herein. It may be necessary to make modifications to the part and/or the documentation of the part in order to implement improvements. L-com reserves the right to make such changes as required. Unless otherwise stated, all specifications are nominal. L-com does not make any representation or warranty regarding the suitability of the part described herein for any particular purpose, and L-com does not assume liability arising out of the use of any part or document.

LCCA9933 CAD Drawing

Low Loss SMA Male Right Angle to SMA Male Right Angle Cable Assembly using LMR-240-UF Coax With Times Microwave Components with HeatShrink



1. CABLE ASSEMBLY LENGTH LABEL PLACEMENT: CABLES 36 INCHES OR LESS, ONE LABEL APPROXIMATELY CENTERED. LONGER THAN 36 INCHES, TWO LABELS APPROXIMATELY 6 INCHES FROM EACH CONNECTOR. CABLE ASSEMBLY SHALL BE TESTED FOR CONTINUITY.
2. CABLE ASSEMBLY LENGTH DETERMINED BY ITEM P/N AND DESCRIPTION.

THE INFORMATION CONTAINED IN THIS DRAWING IS THE SOLE PROPERTY OF INFINITE ELECTRONICS, INC. ANY REPRODUCTION IN PART OR WHOLE WITHOUT THE WRITTEN PERMISSION OF INFINITE ELECTRONICS, INC. IS PROHIBITED. THESE COMMODITIES, TECHNOLOGY OR SERVICES ARE EXPORTED FROM THE UNITED STATES IN ACCORDANCE WITH THE EXPORT ADMINISTRATION REGULATIONS. DIVERSION CONTRARY TO U.S. LAW PROHIBITED.

UNLESS OTHERWISE SPECIFIED, LEADING DIMENSIONS ARE IN INCHES. DIMENSIONS IN [] ARE MILLIMETERS.		 INTERPRET ALL DIMENSIONS AND TOLERANCES PER ASME Y14.5	
TOLERANCES:		SCALE: NONE	
.X = ±.2 [5]	FRACTIONS ± 1/32	SHEET 1 OF 1	
.XX = ±.02 [0.5]	ANGLES ± 1°		
.XXX = ±.005 [0.13]			
CABLE LENGTH TOLERANCES:			
>12 [305] ≤ 60 [1524] = +1 [25] / -0			
>60 [1524] ≤ 120 [3048] = +4 [102] / -0			
>120 [3048] ≤ 300 [7620] = +5% / -0			
ALL DIMENSIONS ARE FOR REFERENCE ONLY. UNDIMENSIONED NON-CRITICAL FEATURES MAY VARY IN SIZE AND LOCATION. COLORS MAY VARY.			
 an INFINITE brand		Website: www.L-com.com Phone: 1.800.341.5266 1.978.682.6936	
DESCRIPTION: SMA MALE RIGHT ANGLE TO SMA MALE RIGHT ANGLE CABLE USING LMR-240-UF COAX WITH HEATSHRINK			
SIZE: A	CAGE CODE: 43321	DRAWN BY: KGLEBOVA	ITEM NO.: LCCA9933
REV: A			REV: A