

Low Loss N Male to SMA Male Right Angle Cable Assembly using LMR-240-UF Coax With Times Microwave Components with HeatShrink



LCCA9929

Configuration

- Connector 1: N Male
- Connector 2: SMA Male Right Angle
- Cable Type: LMR-240-UF
- Coax Flex Type: Flexible

Description

L-com's LCCA9929 is a low loss N male to SMA male right angle cable assembly using LMR-240-UF coax with Times Microwave components with heatshrink and ships same-day. The LMR-240-UF coax of this N cable uses the PE (F) dielectric with a VoP of 84%, resulting in very low insertion loss compared to solid dielectrics. These flexible RF cable assemblies are ideal for applications where flexure is required. Our L-com N to SMA cable assembly has a male to male gender configuration with flexible LMR-240-UF series coax and operates to 3 GHz. The double shield of this N cable is layered by tinned copper braid over aluminum tape providing shielding effectiveness greater than 90dB. This right angle SMA cable interface on the LMR-240-UF coax allows for easier connections in tight spaces.

Custom versions of this N male to N male cable, along with the rest of L-com's other RF assemblies, can also be built and shipped same day. Other available RF cable assembly value added services from L-com include connector orientation or clocking, heat shrink booting and custom labeling. RF testing can also be performed to document the electrical performance of your cable assembly. Contact a sales representative for testing or custom RF cable quotes. Part number LCCA9929 L-com Low Loss N Male to SMA Male Right Angle Cable Assembly using LMR-240-UF Coax With Times Microwave Components with HeatShrink data sheet PDF includes details of the RF product specifications, CAD drawing(s) and dimensions below.

Electrical Specifications

| Description | Minimum | Typical | Maximum | Units |
|--------------------------------------|---------|--------------|---------|-----------------------|
| Frequency Range | DC | | 3 | GHz |
| VSWR | | | 1.5:1 | |
| Velocity of Propagation | | 84 | | % |
| RF Shielding | 90 | | | dB |
| Group Delay | | 1.21 [3.97] | | ns/ft [ns/m] |
| Capacitance | | 24.2 [79.4] | | pF/ft [pF/m] |
| Inductance | | 0.06 [0.2] | | uH/ft [uH/m] |
| DC Resistance Inner Conductor | | 4.28 [14.04] | | Ohms/1000ft [Ohms/Km] |
| DC Resistance Outer Conductor | | 3.89 [12.76] | | Ohms/1000ft [Ohms/Km] |
| Dielectric Withstanding Voltage (DC) | | | 1,500 | Vdc |
| Jacket Spark | | | 5,000 | Vrms |
| Input Power (Peak) | | | 5.6 | KWatts |

Specifications by Frequency

Low Loss N Male to SMA Male Right Angle Cable Assembly using LMR-240-UF Coax With Times Microwave Components with HeatShrink



LCCA9929

| Part Number | Length | Description | F1 | F2 | F3 | F4 | F5 | Units | Weight (lbs) |
|--------------|--------------------------|-----------------------|-----------|-------|-------|-------|-------|-------|--------------|
| | | | Frequency | 100 | 250 | 500 | 1000 | 3000 | |
| LCCA9929 | Custom Lengths Available | Insertion Loss (Typ.) | 0.028 | 0.046 | 0.066 | 0.095 | 0.168 | dB/ft | |
| | | | 0.1 | 0.16 | 0.22 | 0.32 | 0.56 | dB/m | |
| LCCA9929-12 | 12 inch | Insertion Loss (Typ.) | 0.33 | 0.35 | 0.37 | 0.4 | 0.47 | dB | 0.137 |
| LCCA9929-24 | 24 inch | Insertion Loss (Typ.) | 0.36 | 0.4 | 0.44 | 0.49 | 0.64 | dB | 0.17 |
| LCCA9929-36 | 36 inch | Insertion Loss (Typ.) | 0.39 | 0.44 | 0.5 | 0.59 | 0.81 | dB | 0.202 |
| LCCA9929-60 | 60 inch | Insertion Loss (Typ.) | 0.44 | 0.53 | 0.63 | 0.78 | 1.14 | dB | 0.266 |
| LCCA9929-300 | 300 inch | Insertion Loss (Typ.) | 1 | 1.45 | 1.95 | 2.68 | 4.5 | dB | 0.906 |

The insertion loss data for the base model does not include loss due to the connectors. Each length includes insertion loss due to the connectors.

Loss due to Connector 1: 0.1 dB
 Loss due to Connector 2: 0.2 dB
 Base Weight: 0.137 pounds
 Additional Weight per Inch: 0.00267 pounds

Electrical Specification Notes:

Insertion Loss does not include the loss of the connectors. Insertion Loss is estimated as 0.1 dB per connector.

Mechanical Specifications

Cable Assembly

Width/Diameter: 0.5 in [12.7 mm]
 Weight: 0.137 lbs [62.14 g]

Cable

Cable Type: LMR-240-UF
 Impedance: 50 Ohms
 Inner Conductor Type: Stranded
 Inner Conductor Material and Plating: Copper
 Dielectric Type: PE (F)
 Number of Shields: 2
 Shield Layer 1: Aluminum Tape
 Shield Layer 2: Tinned Copper Braid
 Jacket Material: TPE
 Jacket Diameter: 0.24 in [6.1 mm]
 One Time Minimum Bend Radius: 0.75 in [19.05 mm]
 Repeated Minimum Bend Radius: 2.5 in [63.5 mm]
 Bending Moment: 0.13 lbs-ft [0.18 N-m]

Low Loss N Male to SMA Male Right Angle Cable Assembly using LMR-240-UF Coax With Times Microwave Components with HeatShrink



LCCA9929

Connectors

| Description | Connector 1 | Connector 2 |
|-----------------------------------|------------------|-----------------------------|
| Type | N Male | SMA Male Right Angle |
| Impedance | 50 Ohms | 50 Ohms |
| Configuration | Straight | Right Angle |
| Contact Material and Plating | Brass, Gold | Brass, Gold |
| Dielectric Type | PTFE | PTFE |
| Body Material and Plating | Brass, Tri-Metal | Stainless Steel, Passivated |
| Coupling Nut Material and Plating | Brass, Tri-Metal | |

Environmental Specifications

Operating Range Temperature -40 to +85 deg C

Compliance Certifications (see [product page](#) for current document)

Plotted and Other Data

Notes:
Values at 25°C, sea level.

Low Loss N Male to SMA Male Right Angle Cable Assembly using LMR-240-UF Coax With Times Microwave Components with HeatShrink



LCCA9929

Typical Performance Data

How to Order

Part Number Configuration:

LCCA9929

- xx

uu

Unit of Measure:
cm = Centimeters
<blank> = Inches
Length
Base Number

Example: LCCA9929-12 = 12 inches long cable
LCCA9929-100cm = 100 cm long cable

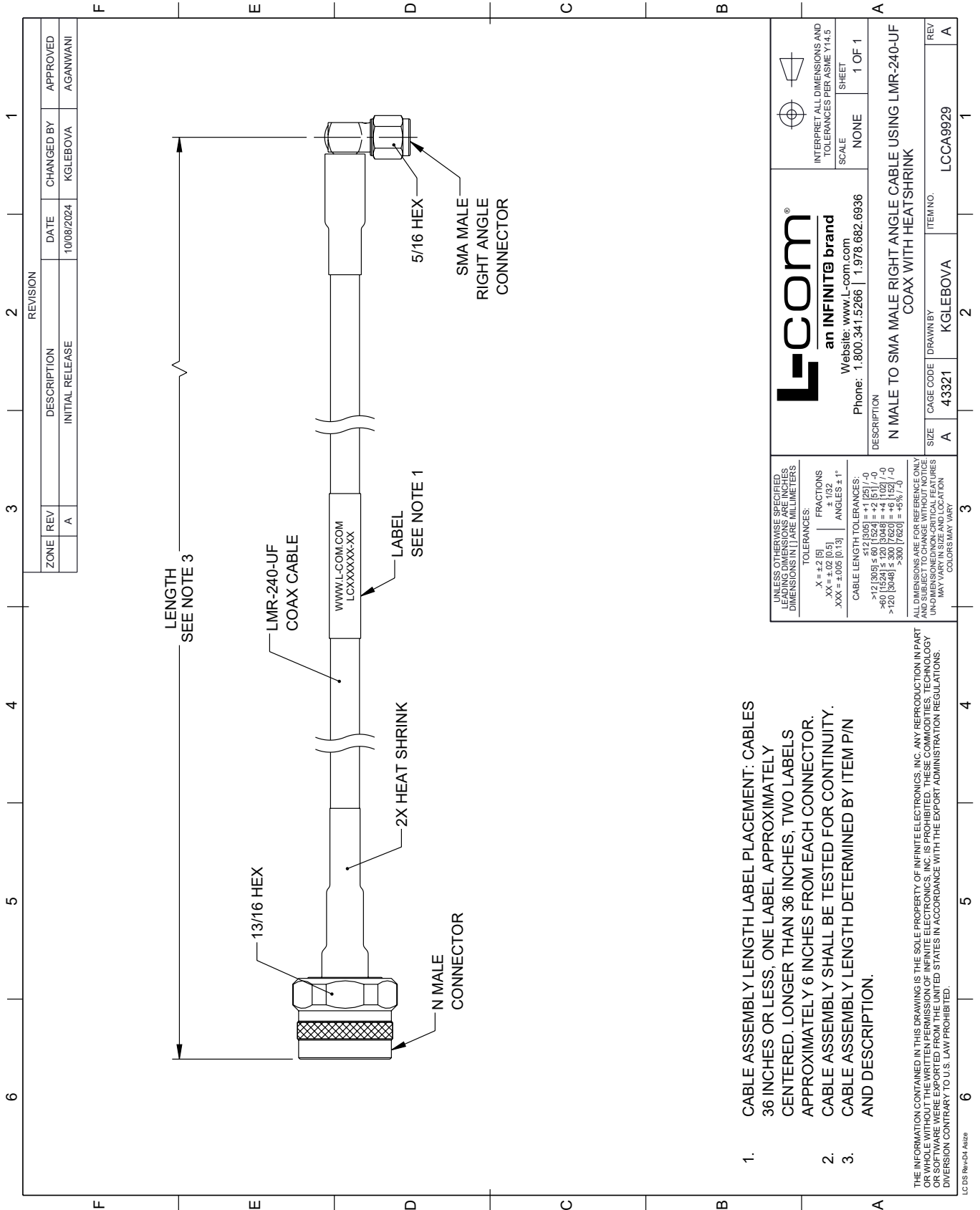
Low Loss N Male to SMA Male Right Angle Cable Assembly using LMR-240-UF Coax With Times Microwave Components with HeatShrink from L-com has same day shipment for domestic and International orders. Our portfolio includes coaxial cable assemblies, connectors, adapters and custom products as well as lightning and surge protectors, NEMA rated enclosures, and an RF product line which includes antennas, amplifiers, passive, and active components.

URL: <https://www.l-com.com/n-male-sma-male-cable-assembly-invalid-lcca9929-p.aspx>

The information contained within this document is accurate to the best of our knowledge and representative of the part described herein. It may be necessary to make modifications to the part and/or the documentation of the part in order to impliment improvements. L-com reserves the right to make such changes as required. Unless otherwise stated, all specifications are nominal. L-com does not make any representation or warranty regarding the suitability of the part described herein for any particular purpose, and L-com does not assume liability arising out of the use of any part or document.

LCCA9929 CAD Drawing

Low Loss N Male to SMA Male Right Angle Cable Assembly using LMR-240-UF Coax With Times Microwave Components with HeatShrink



- CABLE ASSEMBLY LENGTH LABEL PLACEMENT: CABLES 36 INCHES OR LESS, ONE LABEL APPROXIMATELY CENTERED. LONGER THAN 36 INCHES, TWO LABELS APPROXIMATELY 6 INCHES FROM EACH CONNECTOR.
- CABLE ASSEMBLY SHALL BE TESTED FOR CONTINUITY.
- CABLE ASSEMBLY LENGTH DETERMINED BY ITEM P/N AND DESCRIPTION.

LC 05 Rev-D4 Altize