

## BNC Plug Right Angle to BNC Plug using RG58 Coax Cable in 24 Inches



### LCCA9857-24

#### Configuration

- Connector 1: BNC Plug Right Angle
- Connector 2: BNC Plug

#### Features

- VSWR of 1.4:1

#### Applications

- Military
- Aerospace
- Wireless Communications
- General Purpose Test

#### Description

L-com's LCCA9857-24 is a BNC plug right angle to BNC plug using RG58 coax cable in 24 inches and ships same-day. Our L-com BNC to BNC cable assembly has a plug to plug gender configuration with series coax and operates to 4 GHz. This right angle BNC cable interface on the allows for easier connections in tight spaces.

Custom versions of this BNC plug to BNC plug cable, along with the rest of L-com's other RF assemblies, can also be built and shipped same day. Other available RF cable assembly value added services from L-com include connector orientation or clocking, heat shrink booting and custom labeling. RF testing can also be performed to document the electrical performance of your cable assembly. Contact a sales representative for testing or custom RF cable quotes. Part number LCCA9857-24 L-com BNC Plug Right Angle to BNC Plug using RG58 Coax Cable in 24 Inches data sheet PDF includes details of the RF product specifications, CAD drawing(s) and dimensions below.

#### Electrical Specifications

Description	Minimum	Typical	Maximum	Units
Frequency Range	DC		4	GHz
VSWR			1.4:1	
Velocity of Propagation		65.9		%
Capacitance		29.4 [96.46]		pF/ft [pF/m]

#### Specifications by Frequency

Description	F1	F2	F3	F4	F5	Units
Frequency	0.1	0.25	0.5	1	4	GHz
Insertion Loss (Typ.)	0.38	0.44	0.52	0.7	1.3	dB

#### Electrical Specification Notes:

Insertion Loss does not include the loss of the connectors. Insertion Loss is estimated as 0.2 dB per connector

#### Mechanical Specifications

##### Cable Assembly

Length\* 24 in [609.6 mm]

BNC Plug Right Angle to BNC Plug using RG58 Coax Cable in 24 Inches



**LCCA9857-24**

Weight	0.0865 lbs [39.24 g]
<b>Cable</b>	
Impedance	50 Ohms
Inner Conductor Type	Stranded
Inner Conductor Material and Plating	Copper, Tin
Dielectric Type	PE
Number of Shields	1
Shield Layer 1	Tinned Copper Braid

**Connectors**

Description	Connector 1	Connector 2
Type	BNC Plug Right Angle	BNC Plug
Impedance	50 Ohms	50 Ohms
Contact Material and Plating	Bronze, Gold over Copper	Bronze, Gold over Copper
Body Material and Plating	Bronze, Copper-Tin-Zinc Alloy	Bronze, Copper-Tin-Zinc Alloy

**Compliance Certifications** (see [product page](#) for current document)

**Plotted and Other Data**

- Notes:
- Values at 25°C, sea level.

BNC Plug Right Angle to BNC Plug using RG58 Coax Cable in 24 Inches



**LCCA9857-24**

**How to Order**

Part Number Configuration:

**LCCA9857 - xx uu**

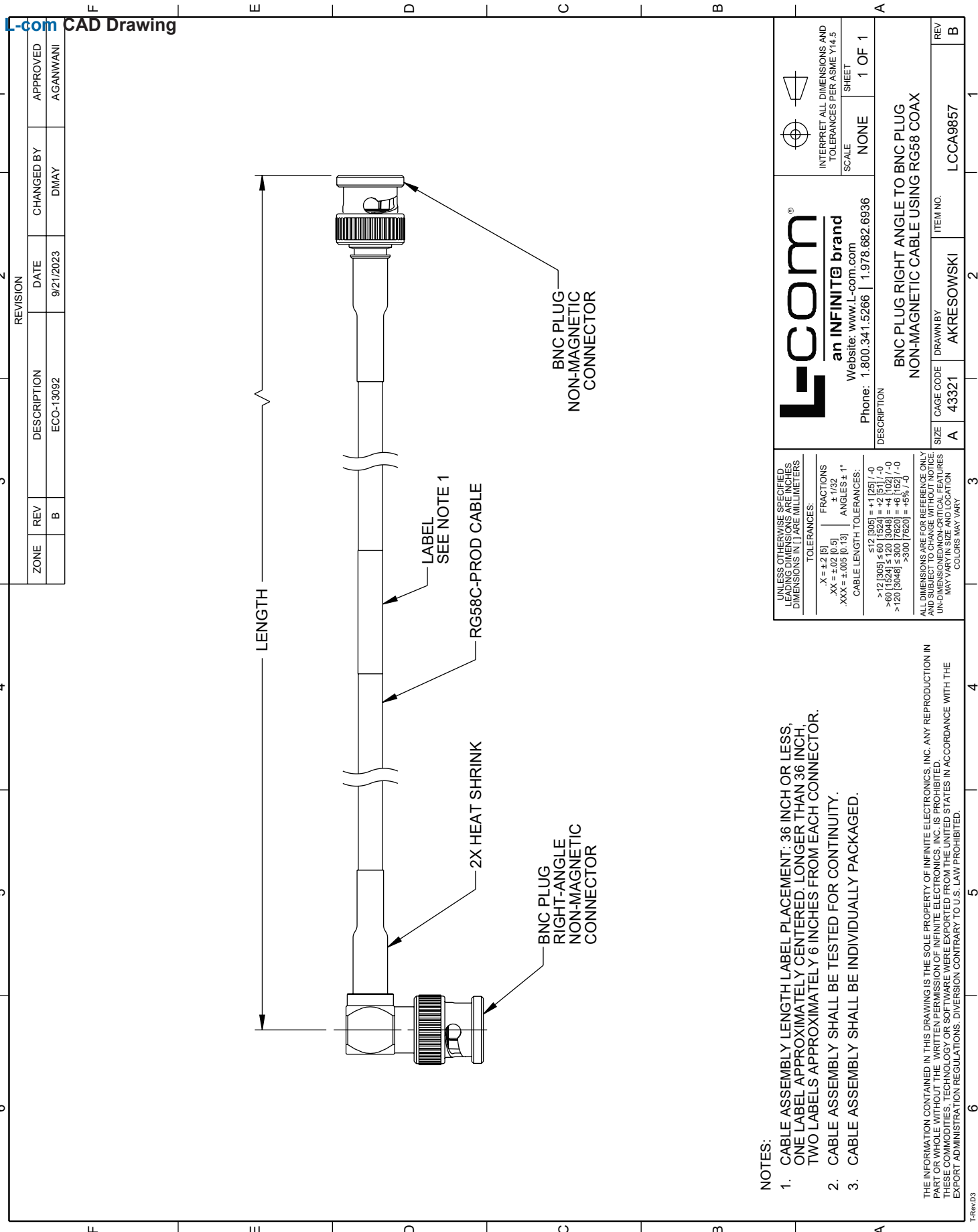


Example: LCCA9857-12 = 12 inches long cable  
LCCA9857-100cm = 100 cm long cable

BNC Plug Right Angle to BNC Plug using RG58 Coax Cable in 24 Inches from L-com has same day shipment for domestic and International orders. L-com is a leading manufacturer of wired and wireless connectivity products and committed to in-stock availability and same day shipping. Our portfolio includes coaxial cable assemblies, connectors, adapters and custom products as well as lightning and surge protectors, NEMA rated enclosures, and an RF product line which includes antennas, amplifiers, passive, and active components.

The information contained within this document is accurate to the best of our knowledge and representative of the part described herein. It may be necessary to make modifications to the part and/or the documentation of the part in order to impliment improvements. L-com reserves the right to make such changes as required. Unless otherwise stated, all specifications are nominal. L-com does not make any representation or warranty regarding the suitability of the part described herein for any particular purpose, and L-com does not assume liability arising out of the use of any part or document.ontained within this document is accurate to the best of our knowledge and representative of the part described herein. It may be necessary to make modifications to the part and/or the documentation of the part in order to impliment improvements. L-com reserves the right to make such changes as required. Unless otherwise stated, all specifications are nominal. L-com does not make any representation or warranty regarding the suitability of the part described herein for any particular purpose, and L-com does not assume liability arising out of the use of any part or document.

# BNC Plug Right Angle to BNC Plug using RG58 Coax Cable in 24 Inches




**NOTES:**

1. CABLE ASSEMBLY LENGTH LABEL PLACEMENT: 36 INCH OR LESS, ONE LABEL APPROXIMATELY CENTERED, LONGER THAN 36 INCH, TWO LABELS APPROXIMATELY 6 INCHES FROM EACH CONNECTOR.
2. CABLE ASSEMBLY SHALL BE TESTED FOR CONTINUITY.
3. CABLE ASSEMBLY SHALL BE INDIVIDUALLY PACKAGED.

THE INFORMATION CONTAINED IN THIS DRAWING IS THE SOLE PROPERTY OF INFINITE ELECTRONICS, INC. ANY REPRODUCTION IN WHOLE OR IN PART WITHOUT THE WRITTEN PERMISSION OF INFINITE ELECTRONICS, INC. IS PROHIBITED. THESE COMMODITIES, TECHNOLOGY OR SOFTWARE WERE EXPORTED FROM THE UNITED STATES IN ACCORDANCE WITH THE EXPORT ADMINISTRATION REGULATIONS, DIVERSION CONTRARY TO U.S. LAW PROHIBITED.

UNLESS OTHERWISE SPECIFIED, LEADING DIMENSIONS ARE IN INCHES, DIMENSIONS IN [ ] ARE MILLIMETERS.	
TOLERANCES:	FRACTIONS
.X = ±.2 [5]	± 1/32
.XX = ±.02 [0.5]	ANGLES ± 1°
.XXX = ±.005 [0.13]	
CABLE LENGTH TOLERANCES:	
<12 [305]	±1 [25] / -0
>12 [305] < 60 [1524]	±2 [51] / -0
>60 [1524] < 120 [3048]	±4 [102] / -0
>120 [3048] < 300 [7620]	±6 [152] / -0
>300 [7620]	±5% / -0

 <b>an INFINITE® brand</b> Website: <a href="http://www.L-com.com">www.L-com.com</a> Phone: 1.800.341.5266   1.978.682.6936		INTERPRET ALL DIMENSIONS AND TOLERANCES PER ASME Y14.5 SCALE NONE SHEET 1 OF 1
DESCRIPTION <b>BNC PLUG RIGHT ANGLE TO BNC PLUG                  NON-MAGNETIC CABLE USING RG58 COAX</b>		
SIZE	ITEM NO.	REV
A	AKRESOWSKI	B
CAGE CODE	DRAWN BY	
43321	AKRESOWSKI	
LCCA9857		

L-com CAD Drawing

T-RwD3