

MMCX Plug Right Angle to MMCX Plug Right Angle using  
RG178 Coax Cable (Bronze Contact) in 48 Inches

## LCCA9839-48



### Configuration

- Connector 1: MMCX Plug Right Angle
- Connector 2: MMCX Plug Right Angle
- Cable Type: RG178

### Features

- VSWR of 1.4:1

### Applications

- Military
- Aerospace
- Wireless Communications
- General Purpose Test

### Description

L-com's LCCA9839-48 is a MMCX plug right angle to MMCX plug right angle using RG178 coax cable (bronze contact) in 48 inches and ships same-day. Our L-com MMCX to MMCX cable assembly has a plug to plug gender configuration with RG178 series coax and operates to 3 GHz. This right angle MMCX cable interface on the RG178 allows for easier connections in tight spaces.

Custom versions of this MMCX plug to MMCX plug cable, along with the rest of L-com's other RF assemblies, can also be built and shipped same day. Other available RF cable assembly value added services from L-com include connector orientation or clocking, heat shrink booting and custom labeling. RF testing can also be performed to document the electrical performance of your cable assembly. Contact a sales representative for testing or custom RF cable quotes. Part number LCCA9839-48 L-com MMCX Plug Right Angle to MMCX Plug Right Angle using RG178 Coax Cable (Bronze Contact) in 48 Inches data sheet PDF includes details of the RF product specifications, CAD drawing(s) and dimensions below.

### Electrical Specifications

Description	Minimum	Typical	Maximum	Units
Frequency Range	DC		3	GHz
VSWR			1.4:1	
Velocity of Propagation		70		%
Capacitance		29.4 [96.46]		pF/ft [pF/m]

### Specifications by Frequency

Description	F1	F2	F3	F4	F5	Units
Frequency	0.1	0.25	0.5	1	3	GHz
Insertion Loss (Typ.)	0.92	1.2	1.6	2	3.32	dB

#### Electrical Specification Notes:

Insertion Loss does not include the loss of the connectors. Insertion Loss is estimated as 0.2 dB per connector

MMCX Plug Right Angle to MMCX Plug Right Angle using  
RG178 Coax Cable (Bronze Contact) in 48 Inches

## LCCA9839-48



### Mechanical Specifications

#### Cable Assembly

Length\* 48 in [121.92 cm]

Weight 0.03 lbs [13.61 g]

#### Cable

Cable Type RG178

Impedance 50 Ohms

Inner Conductor Type Stranded

Inner Conductor Material and Plating Copper Clad Steel, Silver

Dielectric Type PTFE

### Connectors

Description	Connector 1	Connector 2
Type	MMCX Plug Right Angle	MMCX Plug Right Angle
Impedance	50 Ohms	50 Ohms
Contact Material and Plating	Bronze, Gold over Copper	Beryllium Copper, Gold over Copper
Body Material and Plating	Bronze, Copper-Tin-Zinc Alloy	Beryllium Copper, Copper-Tin-Zinc Alloy

**Compliance Certifications** (see [product page](#) for current document)

### Plotted and Other Data

Notes:

- Values at 25°C, sea level.

MMCX Plug Right Angle to MMCX Plug Right Angle using  
RG178 Coax Cable (Bronze Contact) in 48 Inches

**LCCA9839-48**



## How to Order

Part Number Configuration:

**LCCA9839**

- **xx**

**uu**

Unit of Measure:  
cm = Centimeters  
<blank> = Inches  
Length  
Base Number

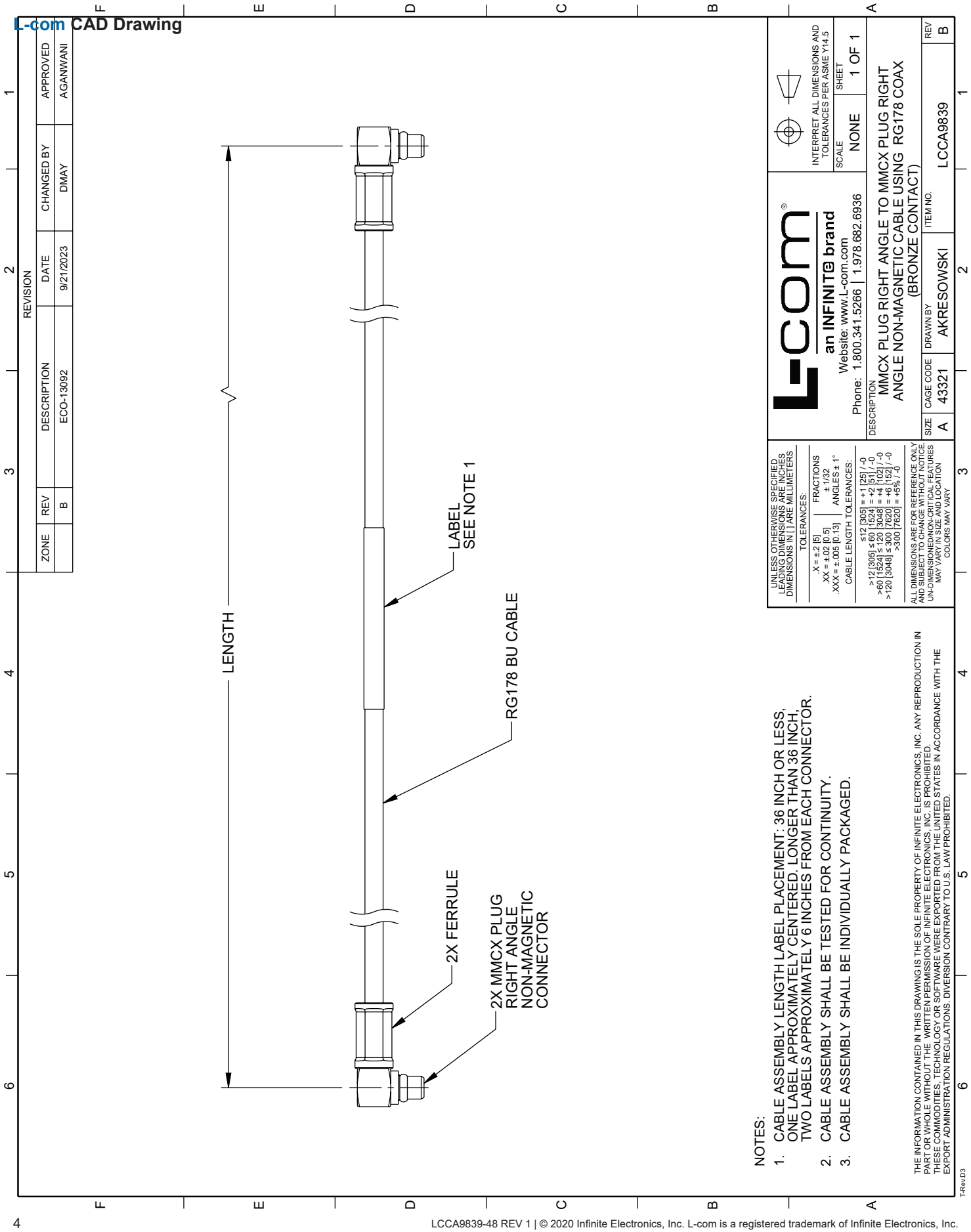
Example: LCCA9839-12 = 12 inches long cable  
LCCA9839-100cm = 100 cm long cable

MMCX Plug Right Angle to MMCX Plug Right Angle using RG178 Coax Cable (Bronze Contact) in 48 Inches from L-com has same day shipment for domestic and International orders. L-com is a leading manufacturer of wired and wireless connectivity products and committed to in-stock availability and same day shipping. Our portfolio includes coaxial cable assemblies, connectors, adapters and custom products as well as lightning and surge protectors, NEMA rated enclosures, and an RF product line which includes antennas, amplifiers, passive, and active components.

The information contained within this document is accurate to the best of our knowledge and representative of the part described herein. It may be necessary to make modifications to the part and/or the documentation of the part in order to implement improvements. L-com reserves the right to make such changes as required. Unless otherwise stated, all specifications are nominal. L-com does not make any representation or warranty regarding the suitability of the part described herein for any particular purpose, and L-com does not assume liability arising out of the use of any part or document contained within this document is accurate to the best of our knowledge and representative of the part described herein. It may be necessary to make modifications to the part and/or the documentation of the part in order to implement improvements. L-com reserves the right to make such changes as required. Unless otherwise stated, all specifications are nominal. L-com does not make any representation or warranty regarding the suitability of the part described herein for any particular purpose, and L-com does not assume liability arising out of the use of any part or document.

MMCX Plug Right Angle to MMCX Plug Right Angle using RG178 Coax Cable (Bronze Contact) in 48 Inches

L-com CAD Drawing



NOTES:

1. CABLE ASSEMBLY LENGTH LABEL PLACEMENT: 36 INCH OR LESS, ONE LABEL APPROXIMATELY CENTERED. LONGER THAN 36 INCH, TWO LABELS APPROXIMATELY 6 INCHES FROM EACH CONNECTOR.
2. CABLE ASSEMBLY SHALL BE TESTED FOR CONTINUITY.
3. CABLE ASSEMBLY SHALL BE INDIVIDUALLY PACKAGED.

THE INFORMATION CONTAINED IN THIS DRAWING IS THE SOLE PROPERTY OF INFINITE ELECTRONICS, INC. ANY REPRODUCTION IN WHOLE OR IN PART WITHOUT THE WRITTEN PERMISSION OF INFINITE ELECTRONICS, INC. IS PROHIBITED. THESE COMMODITIES, TECHNOLOGY OR SOFTWARE WERE EXPORTED FROM THE UNITED STATES IN ACCORDANCE WITH THE EXPORT ADMINISTRATION REGULATIONS. DIVERSION CONTRARY TO U.S. LAW PROHIBITED.

UNLESS OTHERWISE SPECIFIED, LEADING DIMENSIONS ARE IN INCHES DIMENSIONS IN [ ] ARE MILLIMETERS		 		INTERPRET ALL DIMENSIONS AND TOLERANCES PER ASME Y14.5	
TOLERANCES:		L-com® an INFINIT@ brand Website: www.L-com.com Phone: 1.800.341.5266   1.978.682.6936		SCALE	
FRACTIONS				SHEET	
X = ±.2 [5] XX = ±.02 [0.5] XXX = ±.005 [0.13]		+ 1/32 ANGLES ± 1°		NONE	
CABLE LENGTH TOLERANCES:				1 OF 1	
		≤12 [305] = ±.125 [7.6] >12 [305] ≤60 [1524] = +.2 [5.1] / -0 >60 [1524] ≤120 [3048] = +.4 [10.2] / -0 >120 [3048] ≤300 [7620] = +.6 [15.2] / -0 >300 [7620] = +5% / -0		DESCRIPTION	
ALL DIMENSIONS ARE FOR REFERENCE ONLY AND SUBJECT TO CHANGE WITHOUT NOTICE. UN-DIMENSIONED NON-CRITICAL FEATURES MAY VARY FROM DIMENSIONED FEATURES. COLORS MAY VARY.		MMCX PLUG RIGHT ANGLE TO MMCX PLUG RIGHT ANGLE NON-MAGNETIC CABLE USING RG178 COAX (BRONZE CONTACT)		ITEM NO.	
SIZE		CAGE CODE		REV	
A		43321		B	
DRAWN BY		AKRESOWSKI		LCCA9839	