

Plenum 7/16 DIN Male to 7/16 DIN Male Low PIM Cable Using SPP-500-LLPL Coax Using Times Microwave Parts 3 Meter



LCCA31062-M3

Configuration

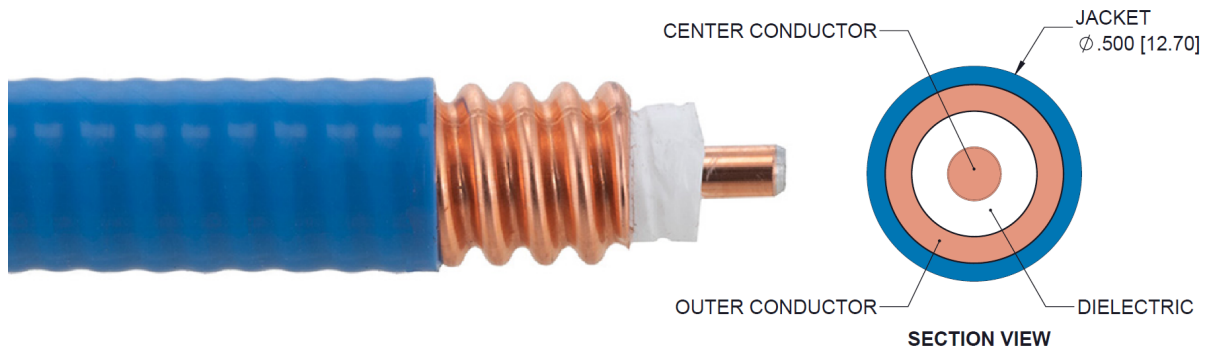
- Connector 1: 7/16 DIN Male
- Connector 2: 7/16 DIN Male
- Cable Type: SPP-500-LLPL

Features

- 100% Tested with PIM Test Results Marked on Cable
- UL910 Plenum Rated Cable
- Lightweight and Extremely Flexible
- Low Loss with Excellent VSWR
- IP67 (when mated)
- Using Times Microwave Components

Applications

- Distributed Antenna Systems (DAS)
- Plenum Installations
- Multi-Carrier Communication Systems
- PIM Testing



Description

L-com's LCCA31062-M3 is a plenum 7/16 DIN male to 7/16 DIN male low PIM cable using SPP-500-LLPL coax using Times Microwave parts 3 meter and ships same-day. The SPP-500-LLPL coax of this 7/16 DIN cable uses the PTFE dielectric with a VoP of 76%. These corrugated RF cable assemblies are extremely durable and ideal for high power applications. Our L-com 7/16 DIN to 7/16 DIN cable assembly has a male to male gender configuration with corrugated SPP-500-LLPL series coax and operates to 5.8 GHz. The jacketed copper shield provides reliable durability. With passive intermodulation levels better than -160 dBc, our cable assembly design is ideal where low PIM is desired. Times Microwave cable is used in each assembly and TMS components are used to form connections with the super flexible low PIM cable. These cable assemblies are expertly built to satisfy your specific need with high quality Times Microwave Systems manufactured parts.

Custom versions of this 7/16 DIN male to 7/16 DIN male cable, along with the rest of L-com's other RF assemblies, can also be built and shipped same day. Other available RF cable assembly value added services from L-com include connector orientation or clocking, heat shrink booting and custom labeling. RF testing can also be performed to document the electrical performance of your cable assembly. Contact a sales representative for testing or custom RF cable quotes. Part number LCCA31062-M3 L-com Plenum 7/16 DIN Male to 7/16 DIN Male Low PIM Cable Using SPP-500-LLPL Coax Using Times Microwave Parts 3 Meter data sheet PDF includes details of the RF product specifications, CAD drawing(s) and dimensions below.

Plenum 7/16 DIN Male to 7/16 DIN Male Low PIM Cable Using SPP-500-LLPL Coax Using Times Microwave Parts 3 Meter



LCCA31062-M3

Electrical Specifications

| Description | Minimum | Typical | Maximum | Units |
|-------------------------|---------|--------------|---------|--------------|
| Frequency Range | DC | | 5.8 | GHz |
| VSWR | | | 1.4:1 | |
| Velocity of Propagation | | 76 | | % |
| Passive Intermodulation | | -165 | -160 | dBc |
| Capacitance | | 26.2 [85.96] | | pF/ft [pF/m] |

Specifications by Frequency

| Description | F1 | F2 | F3 | F4 | F5 | Units |
|-----------------------|------|------|------|------|------|-------|
| Frequency | 0.45 | 0.7 | 1 | 2.5 | 5.8 | GHz |
| Insertion Loss (Max.) | 0.43 | 0.49 | 0.55 | 0.78 | 1.11 | dB |

Mechanical Specifications

Cable Assembly

| | |
|----------|----------------------|
| Length | 118.11 in [300 cm] |
| Diameter | 0.5 in [12.7 mm] |
| Weight | 1.818 lbs [824.63 g] |

Cable

| | |
|--------------------------------------|----------------------------------|
| Cable Type | SPP-500-LLPL |
| Impedance | 50 Ohms |
| Inner Conductor Type | Solid |
| Inner Conductor Material and Plating | Copper Clad Aluminum |
| Dielectric Type | PTFE |
| Number of Shields | 1 |
| Shield Layer 1 | Helically Corrugated Copper Tube |
| Outer Conductor Material and Plating | Copper |
| Jacket Material | FEP, Blue |
| Jacket Diameter | 0.5 in [12.7 mm] |
| One Time Minimum Bend Radius | 1.5 in [38.1 mm] |

Plenum 7/16 DIN Male to 7/16 DIN Male Low PIM Cable Using SPP-500-LLPL Coax Using Times Microwave Parts 3 Meter



LCCA31062-M3

Connectors

| Description | Connector 1 | Connector 2 |
|---------------------------------------|---------------------|---------------------|
| Type | 7/16 DIN Male | 7/16 DIN Male |
| Impedance | 50 Ohms | 50 Ohms |
| Contact Material and Plating | Brass, Silver | Brass, Silver |
| Contact Plating Specification | 196 µin | 196 µin |
| Dielectric Type | PTFE | PTFE |
| Outer Conductor Material and Plating | Brass, Tri-Metal | Brass, Tri-Metal |
| Outer Conductor Plating Specification | 118 µin | 118 µin |
| Coupling Nut Material and Plating | Brass, Tri-Metal | Brass, Tri-Metal |
| Coupling Nut Plating Specification | 200 µin | 200 µin |
| Torque | 22.127 ft-lbs 30 Nm | 22.127 ft-lbs 30 Nm |

Environmental Specifications

Temperature

| | |
|-----------------|-------------------|
| Operating Range | -55 to +200 deg C |
| Storage Range | -55 to +200 deg C |
| Plenum Rating | UL910 |

Compliance Certifications (see [product page](#) for current document)

Plotted and Other Data

Notes:

- Values at 25°C, sea level.

Plenum 7/16 DIN Male to 7/16 DIN Male Low PIM Cable Using SPP-500-LLPL Coax Using Times Microwave Parts 3 Meter



LCCA31062-M3

How to Order

Part Number Configuration:

LCCA31062 - xx uu



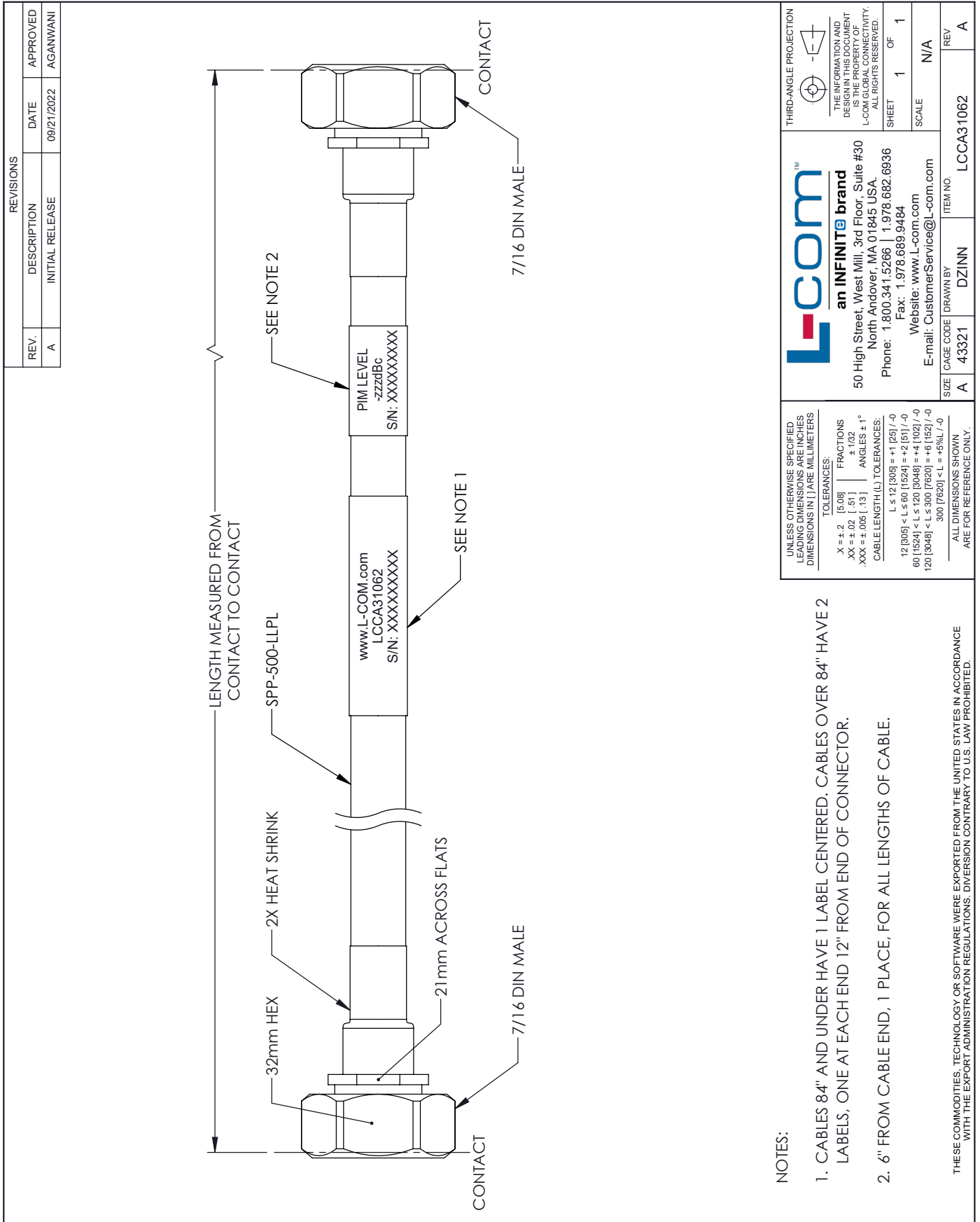
Example: LCCA31062-12 = 12 inches long cable
LCCA31062-100cm = 100 cm long cable

Plenum 7/16 DIN Male to 7/16 DIN Male Low PIM Cable Using SPP-500-LLPL Coax Using Times Microwave Parts 3 Meter from L-com has same day shipment for domestic and International orders. L-com is a leading manufacturer of wired and wireless connectivity products and committed to in-stock availability and same day shipping. Our portfolio includes coaxial cable assemblies, connectors, adapters and custom products as well as lightning and surge protectors, NEMA rated enclosures, and an RF product line which includes antennas, amplifiers, passive, and active components.

The information contained within this document is accurate to the best of our knowledge and representative of the part described herein. It may be necessary to make modifications to the part and/or the documentation of the part in order to impliment improvements. L-com reserves the right to make such changes as required. Unless otherwise stated, all specifications are nominal. L-com does not make any representation or warranty regarding the suitability of the part described herein for any particular purpose, and L-com does not assume liability arising out of the use of any part or document.ontained within this document is accurate to the best of our knowledge and representative of the part described herein. It may be necessary to make modifications to the part and/or the documentation of the part in order to impliment improvements. L-com reserves the right to make such changes as required. Unless otherwise stated, all specifications are nominal. L-com does not make any representation or warranty regarding the suitability of the part described herein for any particular purpose, and L-com does not assume liability arising out of the use of any part or document.

Plenum 7/16 DIN Male to 7/16 DIN Male Low PIM Cable Using SPP-500-LLPL Coax Using Times Microwave Parts 3 Meter

L-com CAD Drawing



| REVISIONS | | DATE | APPROVED |
|-----------|-----------------------------|------------|----------|
| REV. A | DESCRIPTION INITIAL RELEASE | 09/21/2022 | AGANWANI |

| | | |
|--|--|--|
| <p>UNLESS OTHERWISE SPECIFIED LEADING DIMENSIONS ARE INCHES DIMENSIONS IN [] ARE MILLIMETERS</p> <p>TOLERANCES:</p> <p>.X ± .2 [.08] FRACTIONS ± 1/32</p> <p>.XX ± .02 [.51] ANGLES ± 1°</p> <p>.XXX ± .005 [.13]</p> <p>CABLE LENGTH (L) TOLERANCES:</p> <p>L ≤ 12 [305] = +1 [25] / -0</p> <p>12 [305] < L ≤ 60 [1524] = +2 [61] / -0</p> <p>60 [1524] < L ≤ 120 [3048] = +4 [102] / -0</p> <p>120 [3048] < L ≤ 300 [7620] = +6 [152] / -0</p> <p>300 [7620] < L = +5%L / -0</p> <p>ALL DIMENSIONS SHOWN ARE FOR REFERENCE ONLY.</p> | | <p>THIRD-ANGLE PROJECTION</p> <p>THE INFORMATION AND DESIGN IN THIS DOCUMENT IS THE PROPERTY OF L-COM GLOBAL CONNECTIVITY. ALL RIGHTS RESERVED.</p> <p>SHEET 1 OF 1</p> <p>SCALE N/A</p> |
|--|--|--|

| | | | |
|---|-----------------|----------------|--------------------|
| SIZE A | CAGE CODE 43321 | DRAWN BY DZINN | ITEM NO. LCCA31062 |
| <p>L-com an INFINITE brand</p> <p>50 High Street, West Mill, 3rd Floor, Suite #30 North Andover, MA 01845 USA. Phone: 1.800.341.5266 1.978.682.6936 Fax: 1.978.689.9484 Website: www.L-com.com E-mail: CustomerService@L-com.com</p> | | | REV A |

NOTES:

- CABLES 84" AND UNDER HAVE 1 LABEL CENTERED. CABLES OVER 84" HAVE 2 LABELS, ONE AT EACH END 12" FROM END OF CONNECTOR.
- 6" FROM CABLE END, 1 PLACE, FOR ALL LENGTHS OF CABLE.

THESE COMMODITIES, TECHNOLOGY OR SOFTWARE WERE EXPORTED FROM THE UNITED STATES IN ACCORDANCE WITH THE EXPORT ADMINISTRATION REGULATIONS. DIVERSION CONTRARY TO U.S. LAW PROHIBITED.