

Plenum N Male Right Angle to SMA Male Right Angle Low PIM Cable
Using SPP-250-LLPL Coax Using Times Microwave Parts 3 Meter



LCCA31053-M3

Configuration

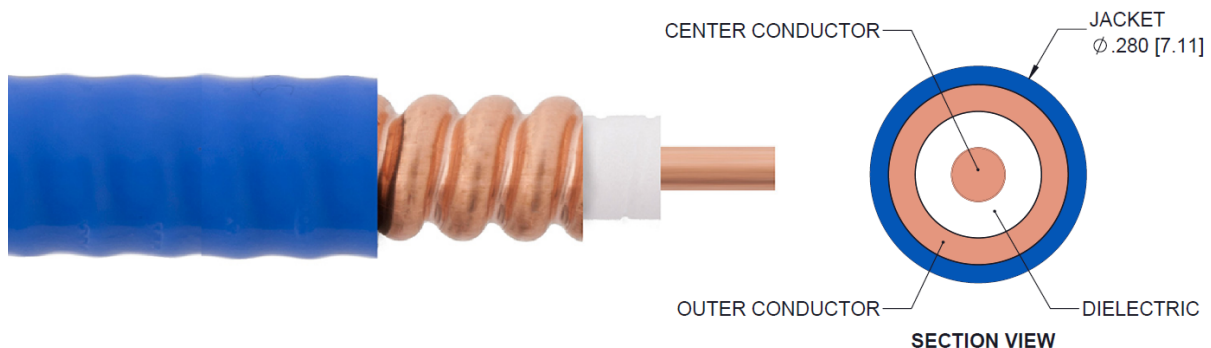
- Connector 1: N Male Right Angle
- Connector 2: SMA Male Right Angle
- Cable Type: SPP-250-LLPL

Features

- 100% Tested with PIM Test Results Marked on Cable
- Lightweight and Extremely Flexible
- Low Loss with Excellent VSWR
- IP67 (when mated)
- Using Times Microwave Components

Applications

- Distributed Antenna Systems (DAS)
- Plenum Installations
- Multi-Carrier Communication Systems
- PIM Testing



Description

L-com's LCCA31053-M3 is a plenum N male right angle to SMA male right angle low PIM cable using SPP-250-LLPL coax using Times Microwave parts 3 meter and ships same-day. These corrugated RF cable assemblies are extremely durable and ideal for high power applications. Our L-com N to SMA cable assembly has a male to male gender configuration with corrugated SPP-250-LLPL series coax and operates to 5.8 GHz. The jacketed copper shield provides reliable durability and excellent shielding effectiveness greater than 100dB. This right angle N and SMA cable interface on the SPP-250-LLPL coax allows for easier connections in tight spaces. Times Microwave cable is used in each assembly and TMS components are used to form connections with the super flexible low PIM cable. These cable assemblies are expertly built to satisfy your specific need with high quality Times Microwave Systems manufactured parts.

Custom versions of this N male to N male cable, along with the rest of L-com's other RF assemblies, can also be built and shipped same day. Other available RF cable assembly value added services from L-com include connector orientation or clocking, heat shrink booting and custom labeling. RF testing can also be performed to document the electrical performance of your cable assembly. Contact a sales representative for testing or custom RF cable quotes. Part number LCCA31053-M3 L-com Plenum N Male Right Angle to SMA Male Right Angle Low PIM Cable Using SPP-250-LLPL Coax Using Times Microwave Parts 3 Meter data sheet PDF includes details of the RF product specifications, CAD drawing(s) and dimensions below.

Plenum N Male Right Angle to SMA Male Right Angle Low PIM Cable
Using SPP-250-LLPL Coax Using Times Microwave Parts 3 Meter



LCCA31053-M3

Electrical Specifications

| Description | Minimum | Typical | Maximum | Units |
|-------------------------------|---------|--------------|---------|-----------------------|
| Frequency Range | DC | | 5.8 | GHz |
| VSWR | | | 1.4:1 | |
| Velocity of Propagation | | 76 | | % |
| RF Shielding | 100 | | | dB |
| Passive Intermodulation | | | -160 | dBc |
| Capacitance | | 27 [88.58] | | pF/ft [pF/m] |
| Inductance | | 0.067 [0.22] | | uH/ft [uH/m] |
| DC Resistance Inner Conductor | | 3 [9.84] | | Ohms/1000ft [Ohms/Km] |

Specifications by Frequency

| Description | F1 | F2 | F3 | F4 | F5 | Units |
|-----------------------|------|------|------|------|------|-------|
| Frequency | 0.25 | 0.5 | 1 | 2.5 | 5.8 | GHz |
| Insertion Loss (Typ.) | 0.31 | 0.53 | 0.74 | 1.24 | 1.94 | dB |

Electrical Specification Notes:

PIM test results vary between cables

The Insertion Loss data above is based on the performance specifications of the coax and connectors used in this assembly. The Insertion Loss includes an estimated insertion loss of 0.1xSQRT(FGHz) dB per connector.

Mechanical Specifications

Cable Assembly

| | |
|----------|----------------------|
| Length | 118.11 in [300 cm] |
| Diameter | 0.5 in [12.7 mm] |
| Weight | 0.832 lbs [377.39 g] |

Cable

| | |
|--------------------------------------|--------------|
| Cable Type | SPP-250-LLPL |
| Impedance | 50 Ohms |
| Inner Conductor Type | Solid |
| Inner Conductor Material and Plating | Copper |
| Dielectric Type | PTFE |
| Number of Shields | 1 |
| Outer Conductor Material and Plating | Copper |

Plenum N Male Right Angle to SMA Male Right Angle Low PIM Cable
Using SPP-250-LLPL Coax Using Times Microwave Parts 3 Meter



LCCA31053-M3

| | |
|------------------------------|-----------------------|
| Jacket Material | FEP, Blue |
| Jacket Diameter | 0.28 in [7.11 mm] |
| One Time Minimum Bend Radius | 1.25 in [31.75 mm] |
| Bending Moment | 0.8 lbs-ft [1.08 N-m] |

Connectors

| Description | Connector 1 | Connector 2 |
|------------------------------------|---------------------|----------------------|
| Type | N Male Right Angle | SMA Male Right Angle |
| Impedance | 50 Ohms | 50 Ohms |
| Mating Cycles | | 500 |
| Contact Material and Plating | Brass, Silver | Brass, Silver |
| Contact Plating Specification | 200 µin | 200 µin |
| Dielectric Type | PTFE | PTFE |
| Body Material and Plating | Brass, Tri-Metal | Brass, Tri-Metal |
| Body Plating Specification | 80 µin | 100 µin |
| Coupling Nut Material and Plating | Brass, Tri-Metal | Brass, Tri-Metal |
| Coupling Nut Plating Specification | 80 µin | 100 µin |
| Torque | 15.05 in-lbs 1.7 Nm | 9.73 in-lbs 1.1 Nm |

Environmental Specifications

Temperature

Operating Range -40 to +125 deg C

Compliance Certifications (see [product page](#) for current document)

Plotted and Other Data

Notes:

Plenum N Male Right Angle to SMA Male Right Angle Low PIM Cable
Using SPP-250-LLPL Coax Using Times Microwave Parts 3 Meter

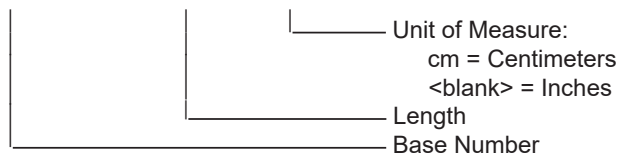


LCCA31053-M3

How to Order

Part Number Configuration:

LCCA31053 - xx uu



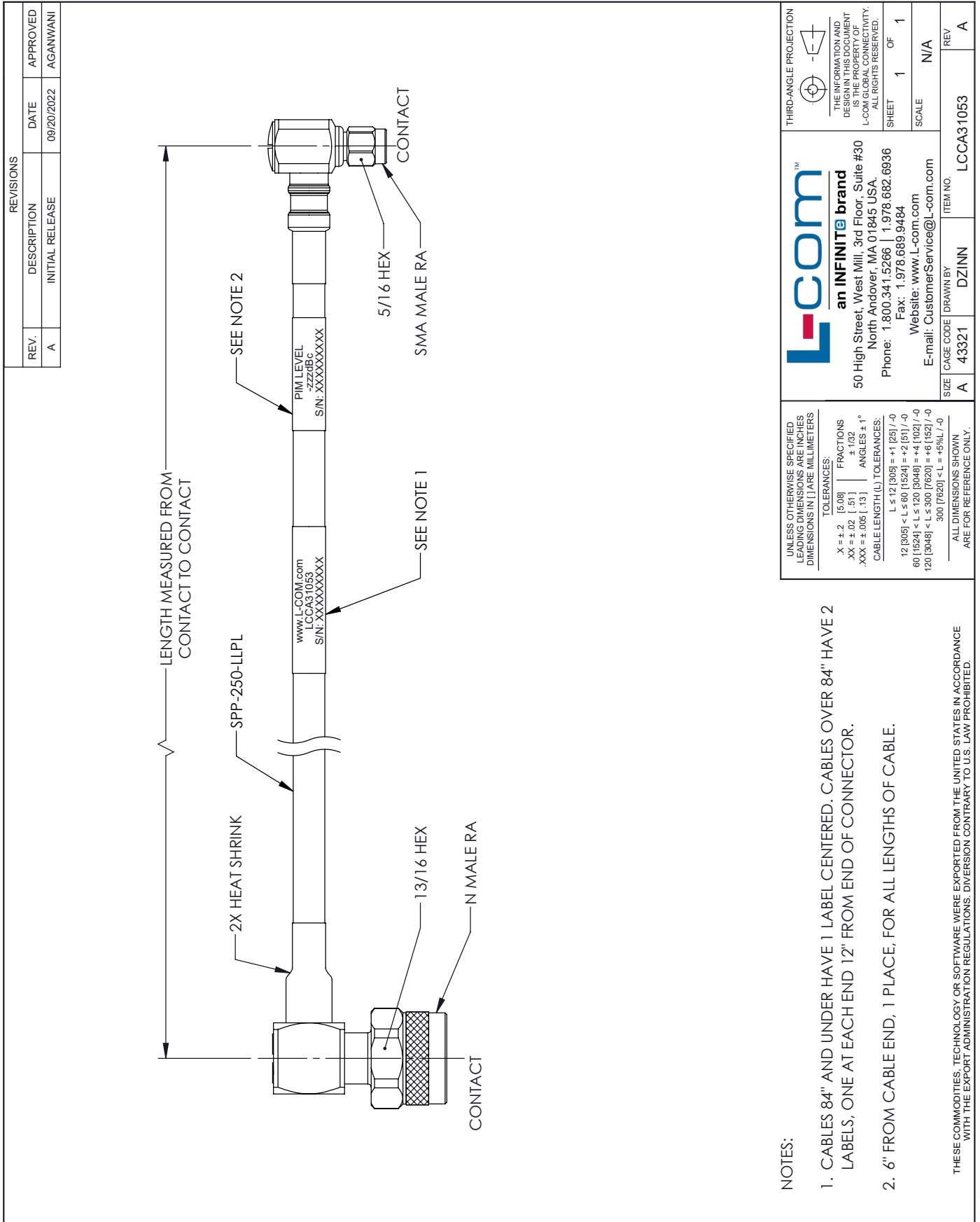
Example: LCCA31053-12 = 12 inches long cable
LCCA31053-100cm = 100 cm long cable

Plenum N Male Right Angle to SMA Male Right Angle Low PIM Cable Using SPP-250-LLPL Coax Using Times Microwave Parts 3 Meter from L-com has same day shipment for domestic and International orders. L-com is a leading manufacturer of wired and wireless connectivity products and committed to in-stock availability and same day shipping. Our portfolio includes coaxial cable assemblies, connectors, adapters and custom products as well as lightning and surge protectors, NEMA rated enclosures, and an RF product line which includes antennas, amplifiers, passive, and active components.

The information contained within this document is accurate to the best of our knowledge and representative of the part described herein. It may be necessary to make modifications to the part and/or the documentation of the part in order to impliment improvements. L-com reserves the right to make such changes as required. Unless otherwise stated, all specifications are nominal. L-com does not make any representation or warranty regarding the suitability of the part described herein for any particular purpose, and L-com does not assume liability arising out of the use of any part or document.ontained within this document is accurate to the best of our knowledge and representative of the part described herein. It may be necessary to make modifications to the part and/or the documentation of the part in order to impliment improvements. L-com reserves the right to make such changes as required. Unless otherwise stated, all specifications are nominal. L-com does not make any representation or warranty regarding the suitability of the part described herein for any particular purpose, and L-com does not assume liability arising out of the use of any part or document.

Plenum N Male Right Angle to SMA Male Right Angle Low PIM Cable Using SPP-250-LLPL Coax Using Times Microwave Parts 3 Meter

L-com CAD Drawing



NOTES:

- CABLES 84" AND UNDER HAVE 1 LABEL CENTERED. CABLES OVER 84" HAVE 2 LABELS, ONE AT EACH END 12" FROM END OF CONNECTOR.
- 6" FROM CABLE END, 1 PLACE, FOR ALL LENGTHS OF CABLE.

THESE COMMODITIES, TECHNOLOGY OR SOFTWARE WERE EXPORTED FROM THE UNITED STATES IN ACCORDANCE WITH THE EXPORT ADMINISTRATION REGULATIONS. DIVERSION CONTRARY TO U.S. LAW PROHIBITED.

L-com
an INFINITE brand

50 High Street, West Mill, 3rd Floor, Suite #30
North Andover, MA 01845 USA.
Phone: 1.800.341.5266 | 1.978.682.6936
Fax: 1.978.689.9484
Website: www.L-com.com
E-mail: CustomerService@L-com.com

THIRD-ANGLE PROJECTION

THE INFORMATION AND DESIGN IN THIS DOCUMENT IS THE PROPERTY OF L-COM GLOBAL CONNECTIVITY. ALL RIGHTS RESERVED.

SHEET 1 OF 1

SCALE N/A

REV A

ITEM NO. LCCA31053

SIZE A

CAGE CODE 43321

DRAWN BY DZINN