

Plenum Low PIM RA 7/16 DIN Male to NEX10 Male Cable SPP-250-LLPL Coax Using Times Microwave Parts 3 Foot



LCCA31041-FT3

Configuration

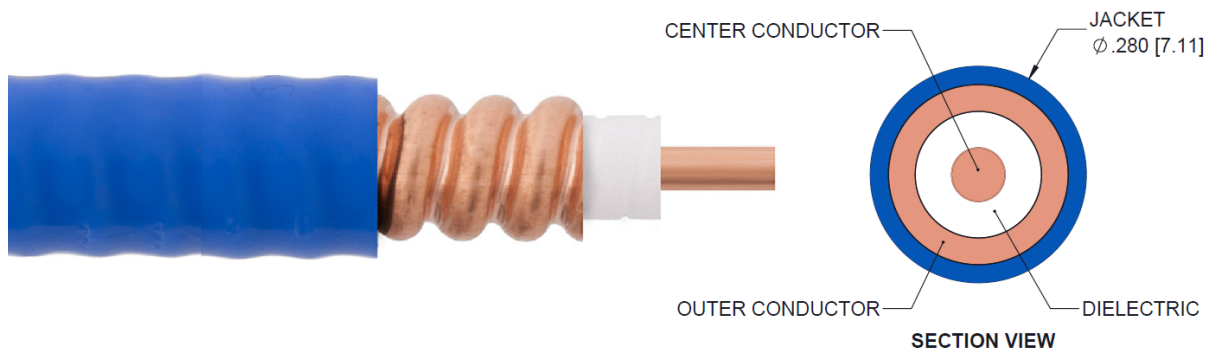
- Connector 1: N Male Right Angle
- Connector 2: SMA Male
- Cable Type: SPP-250-LLPL

Features

- 100% Tested with PIM Test Results Marked on Cable
- Lightweight and Extremely Flexible
- Low Loss with Excellent VSWR
- IP67 (when mated)
- Using Times Microwave Components

Applications

- Distributed Antenna Systems (DAS)
- Plenum Installations
- Multi-Carrier Communication Systems
- PIM Testing



Description

L-com's LCCA31041-FT3 is a plenum low PIM RA 7/16 DIN male to NEX10 male cable SPP-250-LLPL coax using Times Microwave parts 3 foot and ships same-day. These corrugated RF cable assemblies are extremely durable and ideal for high power applications. Our L-com N to SMA cable assembly has a male to male gender configuration with corrugated SPP-250-LLPL series coax and operates to 5.8 GHz. The jacketed copper shield provides reliable durability and excellent shielding effectiveness greater than 100dB. This right angle N cable interface on the SPP-250-LLPL coax allows for easier connections in tight spaces. Times Microwave cable is used in each assembly and TMS components are used to form connections with the super flexible low PIM cable. These cable assemblies are expertly built to satisfy your specific need with high quality Times Microwave Systems manufactured parts.

Custom versions of this N male to N male cable, along with the rest of L-com's other RF assemblies, can also be built and shipped same day. Other available RF cable assembly value added services from L-com include connector orientation or clocking, heat shrink booting and custom labeling. RF testing can also be performed to document the electrical performance of your cable assembly. Contact a sales representative for testing or custom RF cable quotes. Part number LCCA31041-FT3 L-com Plenum Low PIM RA 7/16 DIN Male to NEX10 Male Cable SPP-250-LLPL Coax Using Times Microwave Parts 3 Foot data sheet PDF includes details of the RF product specifications, CAD drawing(s) and dimensions below.

Electrical Specifications

Description	Minimum	Typical	Maximum	Units
-------------	---------	---------	---------	-------

Plenum Low PIM RA 7/16 DIN Male to NEX10 Male Cable SPP-250-LLPL Coax Using Times Microwave Parts 3 Foot



LCCA31041-FT3

Frequency Range	DC	5.8	GHz
VSWR		1.4:1	
Velocity of Propagation		76	%
RF Shielding	100		dB
Passive Intermodulation		-155	dBc
Capacitance		27 [88.58]	pF/ft [pF/m]
Inductance		0.067 [0.22]	uH/ft [uH/m]
DC Resistance Inner Conductor		3 [9.84]	Ohms/1000ft [Ohms/Km]

Specifications by Frequency

Description	F1	F2	F3	F4	F5	Units
Frequency	0.25	0.5	1	2.5	5.8	GHz
Insertion Loss (Typ.)	0.17	0.26	0.37	0.6	0.93	dB

Electrical Specification Notes:

PIM test results vary between cables

The Insertion Loss data above is based on the performance specifications of the coax and connectors used in this assembly. The Insertion Loss includes an estimated insertion loss of 0.1xSQRT(FGHz) dB per connector.

Mechanical Specifications

Cable Assembly

Length	36 in [914.4 mm]
Diameter	0.5 in [12.7 mm]
Weight	0.313 lbs [141.97 g]

Cable

Cable Type	SPP-250-LLPL
Impedance	50 Ohms
Inner Conductor Type	Solid
Inner Conductor Material and Plating	Copper
Dielectric Type	PTFE
Number of Shields	1
Outer Conductor Material and Plating	Copper
Jacket Material	FEP, Blue
Jacket Diameter	0.28 in [7.11 mm]
One Time Minimum Bend Radius	1.25 in [31.75 mm]
Bending Moment	0.8 lbs-ft [1.08 N-m]

Plenum Low PIM RA 7/16 DIN Male to NEX10 Male Cable SPP-250-LLPL Coax Using Times Microwave Parts 3 Foot



LCCA31041-FT3

Connectors

Description	Connector 1	Connector 2
Type	N Male Right Angle	SMA Male
Impedance	50 Ohms	50 Ohms
Mating Cycles		500
Contact Material and Plating	Brass, Silver	Brass, Silver
Contact Plating Specification	200 µin	200µin
Dielectric Type	PTFE	PTFE
Body Material and Plating	Brass, Tri-Metal	Brass, Tri-Metal
Body Plating Specification	80 µin	80 µin
Coupling Nut Material and Plating	Brass, Tri-Metal	Brass, Tri-Metal
Coupling Nut Plating Specification	80 µin	80 µin
Torque	15.05 in-lbs 1.7 Nm	44.25 in-lbs 5 Nm

Environmental Specifications

Temperature

Operating Range -40 to +125 deg C

Compliance Certifications (see [product page](#) for current document)

Plotted and Other Data

Notes:

Plenum Low PIM RA 7/16 DIN Male to NEX10 Male Cable SPP-250-LLPL Coax Using Times Microwave Parts 3 Foot



LCCA31041-FT3

How to Order

Part Number Configuration:

LCCA31041

- **xx**

uu

Unit of Measure:
cm = Centimeters
<blank> = Inches
Length
Base Number

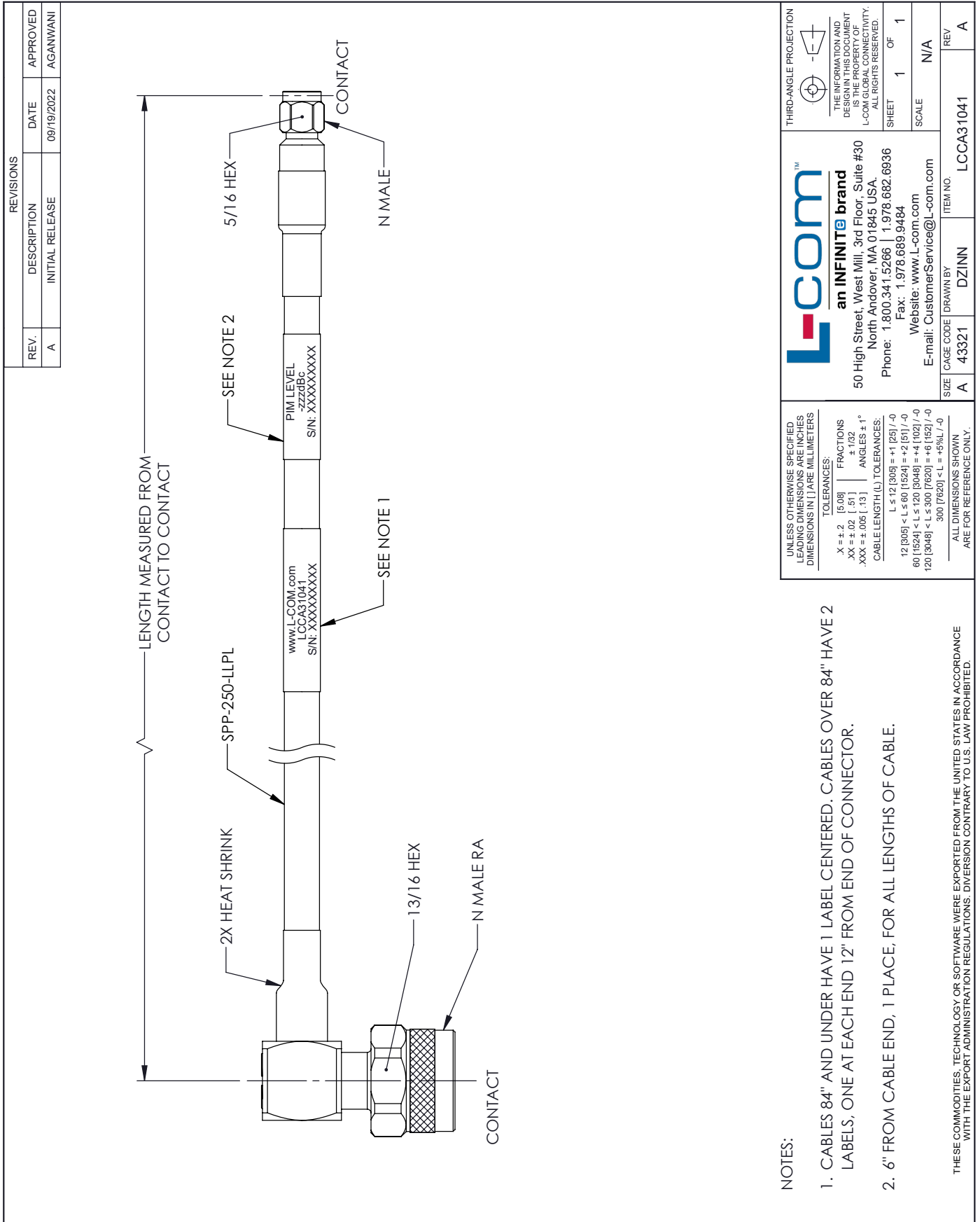
Example: LCCA31041-12 = 12 inches long cable
LCCA31041-100cm = 100 cm long cable

Plenum Low PIM RA 7/16 DIN Male to NEX10 Male Cable SPP-250-LLPL Coax Using Times Microwave Parts 3 Foot from L-com has same day shipment for domestic and International orders. L-com is a leading manufacturer of wired and wireless connectivity products and committed to in-stock availability and same day shipping. Our portfolio includes coaxial cable assemblies, connectors, adapters and custom products as well as lightning and surge protectors, NEMA rated enclosures, and an RF product line which includes antennas, amplifiers, passive, and active components.

The information contained within this document is accurate to the best of our knowledge and representative of the part described herein. It may be necessary to make modifications to the part and/or the documentation of the part in order to implement improvements. L-com reserves the right to make such changes as required. Unless otherwise stated, all specifications are nominal. L-com does not make any representation or warranty regarding the suitability of the part described herein for any particular purpose, and L-com does not assume liability arising out of the use of any part or document contained within this document is accurate to the best of our knowledge and representative of the part described herein. It may be necessary to make modifications to the part and/or the documentation of the part in order to implement improvements. L-com reserves the right to make such changes as required. Unless otherwise stated, all specifications are nominal. L-com does not make any representation or warranty regarding the suitability of the part described herein for any particular purpose, and L-com does not assume liability arising out of the use of any part or document.

Plenum Low PIM RA 7/16 DIN Male to NEX10 Male Cable SPP-250-LLPL Coax Using Times Microwave Parts 3 Foot

L-com CAD Drawing



- NOTES:
- CABLES 84" AND UNDER HAVE 1 LABEL CENTERED. CABLES OVER 84" HAVE 2 LABELS, ONE AT EACH END 12" FROM END OF CONNECTOR.
 - 6" FROM CABLE END, 1 PLACE, FOR ALL LENGTHS OF CABLE.
- THESE COMMODITIES, TECHNOLOGY OR SOFTWARE WERE EXPORTED FROM THE UNITED STATES IN ACCORDANCE WITH THE EXPORT ADMINISTRATION REGULATIONS. DIVERSION CONTRARY TO U.S. LAW PROHIBITED.