

Low Loss 4.3-10 Male to N Female Bulkhead Cable Assembly using LMR-600 Coax, 10 FT with Times Microwave Components



LCCA30341-FT10

Configuration

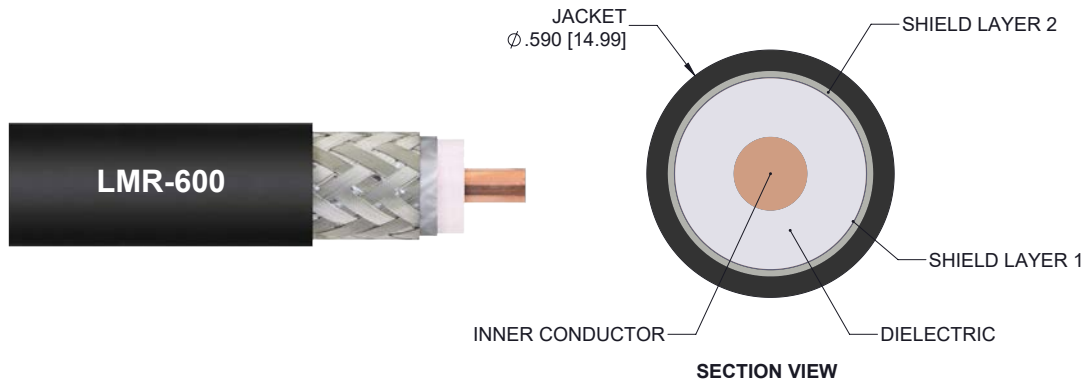
- Connector 1: 4.3-10 Male
- Connector 2: N Female Bulkhead
- Cable Type: LMR-600

Features

- Using Times Microwave Components
- Max Frequency 5.8 GHz
- Shielding Effectivity > 90 dB
- 87% Phase Velocity
- PE Jacket
- Low Insertion Loss
- Bend Radius of 6 Inches

Applications

- General Purpose
- Laboratory Use
- Antenna Installations
- Land Mobile Radio & Other Communication Systems
- Cellular & Wi-Fi Systems



Description

L-com's LCCA30341-FT10 is a low loss 4.3-10 male to N female bulkhead cable assembly using LMR-600 coax, 10 FT with Times Microwave components and ships same-day. The LMR-600 coax of this 4.3-10 cable uses the PE (F) dielectric with a VoP of 87%, resulting in very low insertion loss compared to solid dielectrics. These flexible RF cable assemblies are ideal for applications where flexure is required. Our L-com 4.3-10 to N cable assembly has a male to female gender configuration with flexible LMR-600 series coax and operates to 5.8 GHz. The double shield of this 4.3-10 cable is layered by tinned copper braid over aluminum tape providing shielding effectiveness greater than 90dB. L-com's RF cable assembly with N bulkhead interface enables system designers to have external connections on their product enclosures or to be used for other rack mount and panel mount applications. *LMR™ is a trademark of Times Microwave Systems.

Custom versions of this 4.3-10 male to 4.3-10 female cable, along with the rest of L-com's other RF assemblies, can also be built and shipped same day. Other available RF cable assembly value added services from L-com include connector orientation or clocking, heat shrink booting and custom labeling. RF testing can also be performed to document the electrical performance of your cable assembly. Contact a sales representative for testing or custom RF cable quotes. Part number LCCA30341-FT10 L-com Low Loss 4.3-10 Male to N Female Bulkhead Cable Assembly using LMR-600 Coax, 10 FT with Times Microwave Components data sheet PDF includes details of the RF product specifications, CAD drawing(s) and dimensions below.

Low Loss 4.3-10 Male to N Female Bulkhead Cable Assembly using LMR-600 Coax, 10 FT with Times Microwave Components



LCCA30341-FT10

Electrical Specifications

Description	Minimum	Typical	Maximum	Units
Frequency Range	DC		5.8	GHz
Velocity of Propagation		87		%
RF Shielding	90			dB
Group Delay		1.17 [3.84]		ns/ft [ns/m]
Capacitance		23.4 [76.77]		pF/ft [pF/m]
Inductance		0.058 [0.19]		uH/ft [uH/m]
DC Resistance Inner Conductor		0.53 [1.74]		Ohms/1000ft [Ohms/Km]
DC Resistance Outer Conductor		1.2 [3.94]		Ohms/1000ft [Ohms/Km]
Jacket Spark			8,000	Vrms

Specifications by Frequency

Description	F1	F2	F3	F4	F5	Units
Frequency	0.25	0.5	1	2.5	5.8	GHz
Insertion Loss (Typ.)	0.32	0.37	0.46	0.63	0.93	dB

Electrical Specification Notes:

The Insertion Loss data above is based on the performance specifications of the coax cable and connectors used in this assembly. The Insertion Loss includes an estimated insertion loss of 0.1 dB per connector

Mechanical Specifications

Cable Assembly

Length 120 in [304.8 cm]

Cable

Cable Type LMR-600
 Impedance 50 Ohms
 Inner Conductor Type Solid
 Inner Conductor Material and Plating Copper Clad Aluminum
 Dielectric Type PE (F)
 Number of Shields 2
 Shield Layer 1 Aluminum Tape
 Shield Layer 2 Tinned Copper Braid
 Jacket Material PE, Black
 Jacket Diameter 0.59 in [14.99 mm]

Low Loss 4.3-10 Male to N Female Bulkhead Cable Assembly using LMR-600 Coax, 10 FT with Times Microwave Components



LCCA30341-FT10

One Time Minimum Bend Radius	1.5 in [38.1 mm]
Repeated Minimum Bend Radius	6 in [152.4 mm]
Bending Moment	2.75 lbs-ft [3.73 N-m]
Flat Plate Crush	60 lbs/in [1.07 Kg/mm]
Tensile Strength	350 lbs [158.76 Kg]

Connectors

Description	Connector 1	Connector 2
Type	4.3-10 Male	N Female Bulkhead
Impedance	50 Ohms	50 Ohms
Mating Cycles	500	
Contact Material and Plating	Brass, Silver	Beryllium Copper, Gold
Dielectric Type	PTFE	Teflon
Body Material and Plating	Brass, Tri-Metal	Brass, Silver
Coupling Nut Material and Plating	Brass, Tri-Metal	

Environmental Specifications

Temperature

Operating Range	-40 to +85 deg C
Storage Range	-70 to +85 deg C

Compliance Certifications (see [product page](#) for current document)

Plotted and Other Data

Notes:

Low Loss 4.3-10 Male to N Female Bulkhead Cable Assembly using LMR-600 Coax, 10 FT with Times Microwave Components



LCCA30341-FT10

How to Order

Part Number Configuration:

LCCA30341 - xx uu



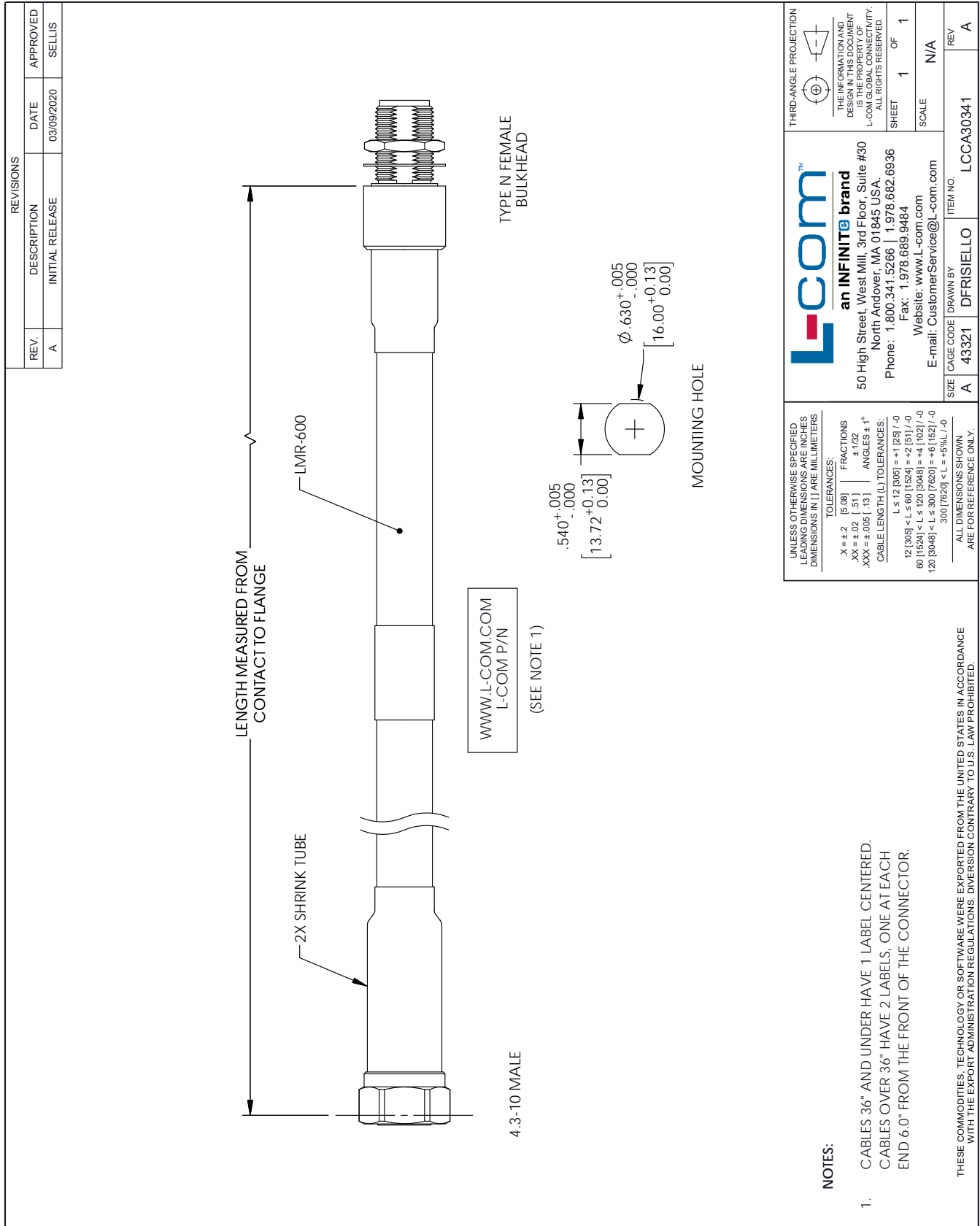
Example: LCCA30341-12 = 12 inches long cable
LCCA30341-100cm = 100 cm long cable

Low Loss 4.3-10 Male to N Female Bulkhead Cable Assembly using LMR-600 Coax, 10 FT with Times Microwave Components from L-com has same day shipment for domestic and International orders. L-com is a leading manufacturer of wired and wireless connectivity products and committed to in-stock availability and same day shipping. Our portfolio includes coaxial cable assemblies, connectors, adapters and custom products as well as lightning and surge protectors, NEMA rated enclosures, and an RF product line which includes antennas, amplifiers, passive, and active components.

The information contained within this document is accurate to the best of our knowledge and representative of the part described herein. It may be necessary to make modifications to the part and/or the documentation of the part in order to impliment improvements. L-com reserves the right to make such changes as required. Unless otherwise stated, all specifications are nominal. L-com does not make any representation or warranty regarding the suitability of the part described herein for any particular purpose, and L-com does not assume liability arising out of the use of any part or document.ontained within this document is accurate to the best of our knowledge and representative of the part described herein. It may be necessary to make modifications to the part and/or the documentation of the part in order to impliment improvements. L-com reserves the right to make such changes as required. Unless otherwise stated, all specifications are nominal. L-com does not make any representation or warranty regarding the suitability of the part described herein for any particular purpose, and L-com does not assume liability arising out of the use of any part or document.

Low Loss 4.3-10 Male to N Female Bulkhead Cable Assembly using LMR-600 Coax, 10 FT with Times Microwave Components

L-com CAD Drawing



T-RevD