

## Low Loss SMA Male to N Male Weatherproof Cable Assembly with Silicone using LMR-195 Coax with Times Microwave Components



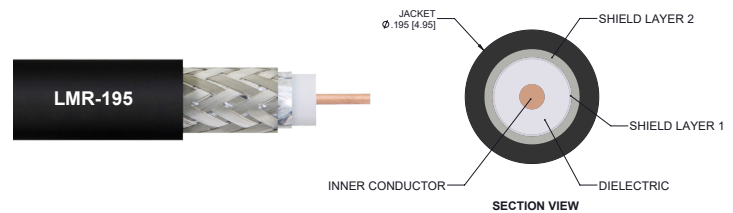
### LCCA30225/WP

#### Configuration

- Connector 1: SMA Male
- Connector 2: N Male
- Cable Type: LMR-195
- Coax Flex Type: Flexible

#### Features

- Max Frequency 6 GHz
- Shielding Effectivity > 90 dB
- 80% Phase Velocity
- Double Shielded
- PE Jacket
- Silicone Connector Boot
- IP68 Rated



#### Description

The L-com LCCA30225/WP is a weatherproof low loss cable assembly that comes with SMA male connection with weatherproof boot on one end and type N male with weatherproof boot on the other. L-com's RF coaxial cable assembly products are designed for typical use, production, laboratory test and measurement, defense/military, aerial antenna towers, etc. The low loss cable has a 50 Ohm impedance and is specifically ready for quicker shipment than most in the industry can provide.

This weatherproof low loss RF cable assembly operates at a maximum frequency of 6 GHz. Our RF cable assembly has a PE jacket with 0.195 inches diameter. The SMA male to type N male cable assembly LCCA30225/WP is built with LMR-195 coax, which has a flexible design. This RF cable assembly with 0.5 inches diameter has copper as cable's inner conducting material and PE (F) dielectric type. The weatherproof boot low loss cable is reusable and can withstand elements including extreme temperature. Additional dimensions, specifications, and CAD drawings for this LCCA30225/WP low loss RF cable are available on our downloadable PDF datasheet.

L-com stocks a wide selection of weatherproof low loss cable assemblies that ship the same business day as ordered from our warehouse. Make your online purchase right now to take advantage of our same-day shipping. For further information on similar products, our expert technical support and knowledgeable sales team can help you get the ideal SMA male to type N male cable assembly as per your requirements.

#### Electrical Specifications

Description	Minimum	Typical	Maximum	Units
Frequency Range	DC		6	GHz
VSWR			1.4:1	
Velocity of Propagation		80		%
RF Shielding	90			dB
Capacitance		25.4 [83.33]		pF/ft [pF/m]
Inductance		0.064 [0.21]		uH/ft [uH/m]
DC Resistance Inner Conductor		7.6 [24.93]		Ohms/1000ft [Ohms/Km]
DC Resistance Outer Conductor		4.9 [16.08]		Ohms/1000ft [Ohms/Km]
Dielectric Withstanding Voltage (DC)			1,000	Vdc

Low Loss SMA Male to N Male Weatherproof  
Cable Assembly with Silicone using LMR-195 Coax  
with Times Microwave Components



**LCCA30225/WP**

**Electrical Specifications**

Description	Minimum	Typical	Maximum	Units
Jacket Spark			3,000	Vrms

**Specifications by Frequency**

Part Number	Length	Description	F1	F2	F3	F4	F5	Units	Weight (lbs)
			Frequency					MHz	
LCCA30225/WP	Custom Lengths Available	Insertion Loss (Typ.)	0.057	0.081	0.116	0.19	0.299	dB/ft	
			0.19	0.27	0.39	0.63	0.99	dB/m	
LCCA30225/WP-FT1	12 In	Insertion Loss (Typ.)	0.26	0.29	0.32	0.39	0.5	dB	0.625
LCCA30225/WP-FT2	24 In	Insertion Loss (Typ.)	0.32	0.37	0.44	0.58	0.8	dB	0.647
LCCA30225/WP-FT3	36 In	Insertion Loss (Typ.)	0.38	0.45	0.55	0.77	1.1	dB	0.669
LCCA30225/WP-FT4	48 In	Insertion Loss (Typ.)	0.43	0.53	0.67	0.96	1.4	dB	0.691
LCCA30225/WP-FT5	60 In	Insertion Loss (Typ.)	0.49	0.61	0.78	1.15	1.7	dB	0.713

The insertion loss data for the base model does not include loss due to the connectors. Each length includes insertion loss due to the connectors.

Loss due to Connector 1:	0.1 dB
Loss due to Connector 2:	0.1 dB
Base Weight:	0.625 pounds
Additional Weight per Inch:	0.00183 pounds

**Mechanical Specifications**

**Cable Assembly**

Width/Diameter	0.5 in [12.7 mm]
Weight	0.625 lbs [283.5 g]

**Cable**

Cable Type	LMR-195
Impedance	50 Ohms
Inner Conductor Type	Solid
Inner Conductor Material and Plating	Copper
Dielectric Type	PE (F)
Number of Shields	2
Shield Layer 1	Aluminum Tape
Shield Layer 2	Tinned Copper Braid
Jacket Material	PE
Jacket Diameter	0.195 in [4.95 mm]
One Time Minimum Bend Radius	0.5 in [12.7 mm]
Repeated Minimum Bend Radius	2 in [50.8 mm]
Bending Moment	0.2 lbs-ft [0.27 N-m]
Flat Plate Crush	15 lbs/in [0.27 Kg/mm]
Tensile Strength	40 lbs [18.14 Kg]

Low Loss SMA Male to N Male Weatherproof  
Cable Assembly with Silicone using LMR-195 Coax  
with Times Microwave Components



**LCCA30225/WP**

**Connectors**

Description	Connector 1	Connector 2
Type	SMA Male	N Male
Option	Weatherproof Boot	Weatherproof Boot
Specification		MIL-STD-348
Impedance	50 Ohms	50 Ohms
Configuration	Straight	Straight
Contact Material and Plating	Brass, Gold	Brass, Gold
Contact Plating Specification	ASTM B488	50 µin minimum
Dielectric Type	Teflon	Teflon
Body Material and Plating	Passivated Stainless Steel	Brass, Tri-Metal
Coupling Nut Material and Plating	Passivated Stainless Steel	Brass, Tri-Metal
Boot Material	Silicone	Silicone

**Environmental Specifications**

Ingress Protection (IP) Rating IP68

**Compliance Certifications** (see [product page](#) for current document)

**Plotted and Other Data**

Notes:  
Values at 25°C, sea level.

Low Loss SMA Male to N Male Weatherproof Cable Assembly with Silicone using LMR-195 Coax with Times Microwave Components



**LCCA30225/WP**

**Typical Performance Data**

**How to Order**

Part Number Configuration:

**LCCA30225/WP - xx uu**



Example: LCCA30225/WP-12 = 12 inches long cable  
LCCA30225/WP-100cm = 100 cm long cable

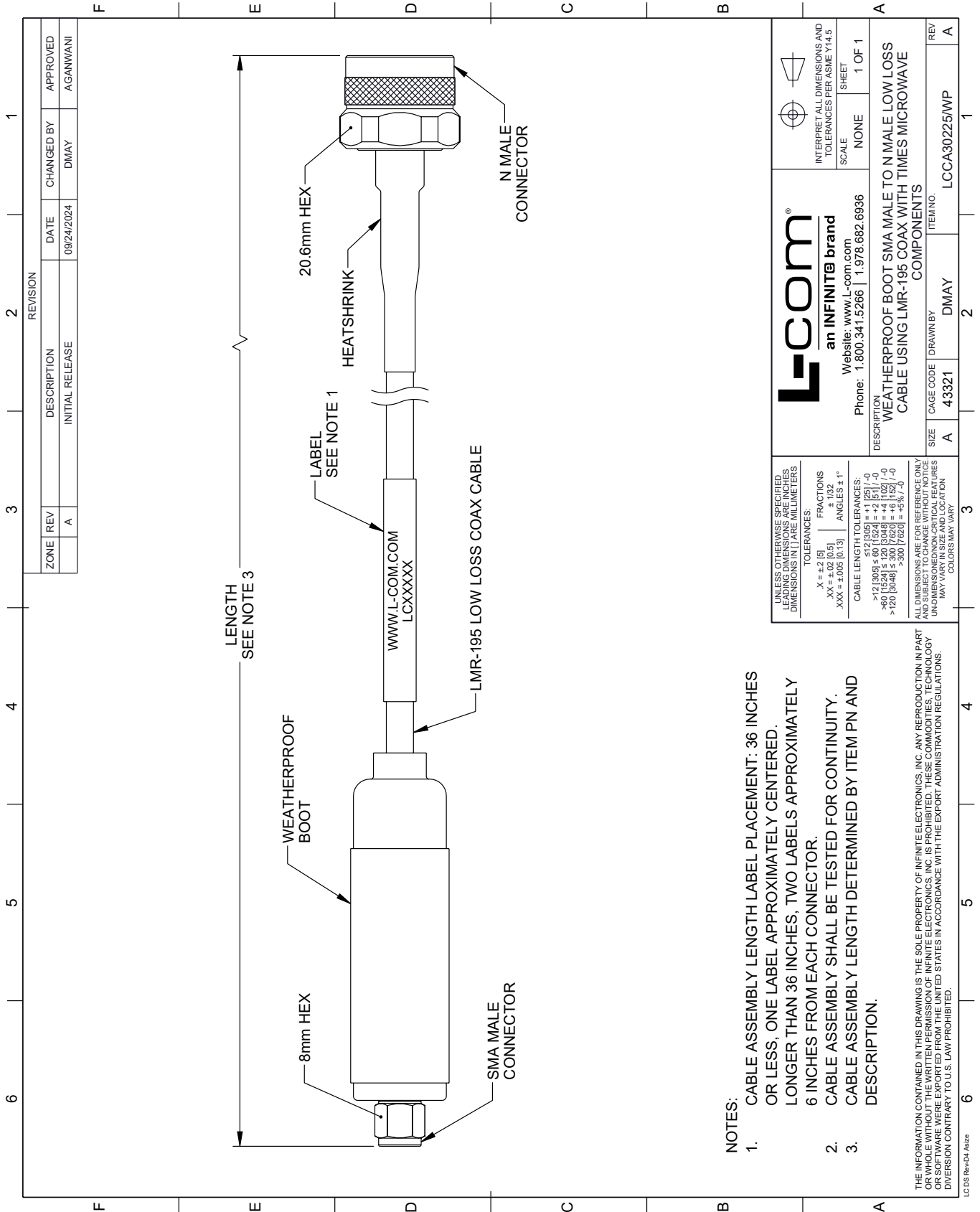
Low Loss SMA Male to N Male Weatherproof Cable Assembly with Silicone using LMR-195 Coax with Times Microwave Components from L-com has same day shipment for domestic and International orders. Our portfolio includes coaxial cable assemblies, connectors, adapters and custom products as well as lightning and surge protectors, NEMA rated enclosures, and an RF product line which includes antennas, amplifiers, passive, and active components.

URL: <https://www.l-com.com/sma-male-n-male-cable-assembly-lcca30225-wp-p.aspx>

The information contained within this document is accurate to the best of our knowledge and representative of the part described herein. It may be necessary to make modifications to the part and/or the documentation of the part in order to impliment improvements. L-com reserves the right to make such changes as required. Unless otherwise stated, all specifications are nominal. L-com does not make any representation or warranty regarding the suitability of the part described herein for any particular purpose, and L-com does not assume liability arising out of the use of any part or document.

# LCCA30225/WP CAD Drawing

Low Loss SMA Male to N Male Weatherproof Cable Assembly with Silicone using LMR-195 Coax with Times Microwave Components



**NOTES:**

1. CABLE ASSEMBLY LENGTH LABEL PLACEMENT: 36 INCHES OR LESS, ONE LABEL APPROXIMATELY CENTERED. LONGER THAN 36 INCHES, TWO LABELS APPROXIMATELY 6 INCHES FROM EACH CONNECTOR.
2. CABLE ASSEMBLY SHALL BE TESTED FOR CONTINUITY.
3. CABLE ASSEMBLY LENGTH DETERMINED BY ITEM PN AND DESCRIPTION.

THE INFORMATION CONTAINED IN THIS DRAWING IS THE SOLE PROPERTY OF INFINITE ELECTRONICS, INC. ANY REPRODUCTION IN PART OR WHOLE WITHOUT THE WRITTEN PERMISSION OF INFINITE ELECTRONICS, INC. IS PROHIBITED. THESE COMMODITIES, TECHNOLOGY OR SOFTWARE ARE EXPORTED FROM THE UNITED STATES IN ACCORDANCE WITH THE EXPORT ADMINISTRATION REGULATIONS. DIVERSION CONTRARY TO U.S. LAW PROHIBITED.

UNLESS OTHERWISE SPECIFIED, LEADING DIMENSIONS ARE IN INCHES. DIMENSIONS IN [ ] ARE MILLIMETERS.		 INTERPRET ALL DIMENSIONS AND TOLERANCES PER ASME Y14.5	
TOLERANCES:		SCALE: NONE	
X = ±.2 [5]	FRACTIONS ± 1/32	SHEET 1 OF 1	
.XX = ±.02 [0.5]	ANGLES ± 1°	REV A	
.XXX = ±.005 [0.13]		LCCA30225/WP	
CABLE LENGTH TOLERANCES:		ITEM NO. LCCA30225/WP	
>12 [305] ≤ 60 [1524] = ±1 [25] / -0		DRAWN BY DMAY	
>60 [1524] ≤ 120 [3048] = ±4 [102] / -0		CAGE CODE 43321	
>120 [3048] ≤ 300 [7620] = ±5% / 0		REVISION A	
ALL DIMENSIONS ARE FOR REFERENCE ONLY. UNDIMENSIONED NON-CRITICAL FEATURES MAY VARY IN SIZE AND LOCATION. COLORS MAY VARY.		DESCRIPTION: WEATHERPROOF BOOT SMA MALE TO N MALE LOW LOSS CABLE USING LMR-195 COAX WITH TIMES MICROWAVE COMPONENTS	

ZONE	REV	DESCRIPTION	DATE	CHANGED BY	APPROVED
A	A	INITIAL RELEASE	09/24/2024	DMAY	AGANWANI