

N Male to N Female Bulkhead Cable Using 402SS Series Coax with Heavy Duty Boot, 3.0 ft

**LCCA30010-FT3**



**Configuration**

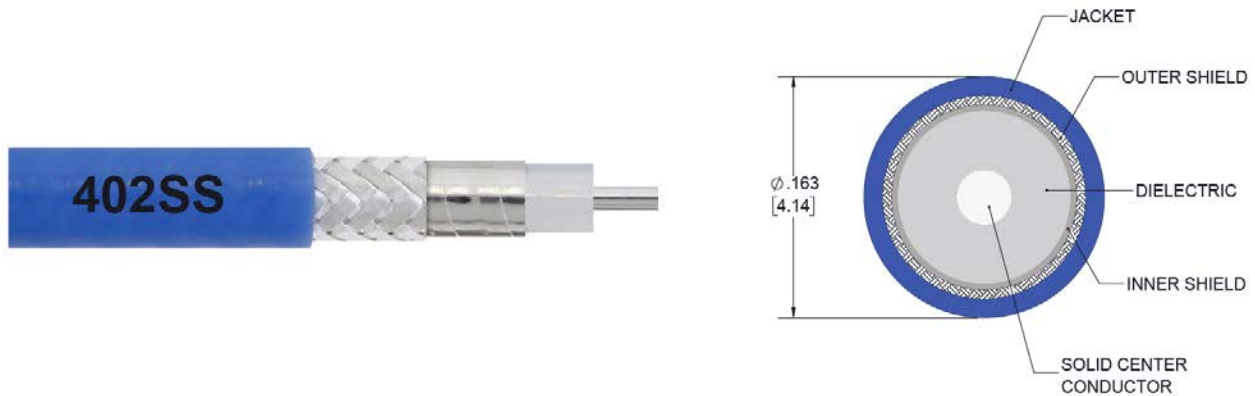
- Connector 1: N Male
- Connector 2: N Female Bulkhead
- Cable Type: 402SS Series

**Features**

- Max Frequency 18 GHz
- Shielding Effectivity > 110dB
- 70% Phase Velocity
- Double Shielded
- FEP Jacket
- Wire Braid over Spiral Strip Shield
- Flexible Alternative to .141 Semi-Rigid
- Heavy Duty Heat Shrink Strain Relief Boot
- Precision Stainless Steel Connectors

**Applications**

- General Purpose
- Laboratory Use
- Flexible RF Interconnect
- Automated (ATE) Test Systems



**Description**

L-com's LCCA30010-FT3 is a N male to N female bulkhead cable using 402SS series coax with heavy duty boot, 3.0 ft and ships same-day. The 402SS series coax of this N cable uses the PTFE dielectric with a VoP of 70%. These flexible RF cable assemblies are ideal for applications where flexure is required. Our L-com N to N cable assembly has a male to female gender configuration with flexible 402SS series series coax and operates to 18 GHz. The double shield of this N cable is layered by silver plated copper braid over silver plated copper tape providing excellent shielding effectiveness greater than 110dB. L-com's RF cable assembly with N bulkhead interface enables system designers to have external connections on their product enclosures or to be used for other rack mount and panel mount applications. L-com's Cable Assembly LCCA30010 is an N male to N female bulkhead, 3.0 ft cable using 402SS Series coax with Heavy Duty Boot that ships same-day. L-com's flexible RF cable assemblies are ideal for applications where tight bends and flexure are required. This L-com N to N cable assembly has a male to female gender configuration with 50 ohm flexible 402SS Series coax and operates to 18 GHz. Our RF cable assembly with N bulkhead interface allows designers to create external connections on their product enclosures, and can be used in a variety of other rack mount and panel mount applications. Highly durable stainless-steel connectors and heavy-duty booting extend the life of this versatile flexible cable assembly. The double shield includes a silver plated copper braid over a silver plated copper spiral strip providing excellent shielding effectiveness greater than 110dB.

Custom versions of this cable assembly along with the rest of L-com's RF cable assemblies can be built and shipped same day. Other available RF cable

N Male to N Female Bulkhead Cable Using 402SS Series Coax with Heavy Duty Boot, 3.0 ft



**LCCA30010-FT3**

assembly value added services include connector orientation or clocking, heat shrink booting and custom labeling. RF testing can also be performed to document the electrical performance of your cable assembly. Contact a sales representative for custom cable quotes.

Custom versions of this N male to N female cable, along with the rest of L-com's other RF assemblies, can also be built and shipped same day. Other available RF cable assembly value added services from L-com include connector orientation or clocking, heat shrink booting and custom labeling. RF testing can also be performed to document the electrical performance of your cable assembly. Contact a sales representative for testing or custom RF cable quotes. Part number LCCA30010-FT3 L-com N Male to N Female Bulkhead Cable Using 402SS Series Coax with Heavy Duty Boot, 3.0 ft data sheet PDF includes details of the RF product specifications, CAD drawing(s) and dimensions below.

**Electrical Specifications**

Description	Minimum	Typical	Maximum	Units
Frequency Range	DC		18	GHz
VSWR			1.4:1	
Velocity of Propagation		70		%
RF Shielding	110			dB
Capacitance		29.4 [96.46]		pF/ft [pF/m]
Operating Voltage (AC)			500	Vrms

**Specifications by Frequency**

Description	F1	F2	F3	F4	F5	Units
Frequency	3	5	10	18		GHz
Insertion Loss (Max.)	0.912	1.157	1.672	2.317		dB

Electrical Specification Notes:

The Insertion Loss data above is based on the performance specifications of the coax cable and connectors used in this assembly. The Insertion Loss is estimated as  $0.1 \cdot \sqrt{\text{FGHz}}$  dB for the N Type Male connector and  $0.07 \cdot \sqrt{\text{FGHz}}$  dB for the N Female Bulkhead connector.

**Mechanical Specifications**

**Cable Assembly**

Length	36 in [914.4 mm]
Diameter	0.315 in [8 mm]
Weight	0.31 lbs [140.61 g]

**Cable**

Cable Type	402SS Series
Impedance	50 Ohms
Inner Conductor Type	Stranded
Inner Conductor Material and Plating	Copper, Silver

N Male to N Female Bulkhead Cable Using 402SS Series Coax with Heavy Duty Boot, 3.0 ft



## LCCA30010-FT3

Dielectric Type	PTFE
Number of Shields	2
Shield Layer 1	Silver Plated Copper Tape
Shield Layer 2	Silver Plated Copper Braid
Jacket Material	FEP, Blue
Jacket Diameter	0.163 in [4.14 mm]
Repeated Minimum Bend Radius	1 in [25.4 mm]

### Connectors

Description	Connector 1	Connector 2
Type	N Male	N Female Bulkhead
Specification	MIL-STD-348A	MIL-STD-348A
Impedance	50 Ohms	50 Ohms
Contact Material and Plating	Brass, Gold	Brass, Gold
Contact Plating Specification	50 µin minimum	50 µin minimum
Dielectric Type	PTFE	PTFE
Body Material and Plating	Brass, Nickel	Brass, Nickel
Body Plating Specification	100 µin minimum	100 µin minimum
Coupling Nut Material and Plating	Brass, Nickel	Brass, Nickel
Coupling Nut Plating Specification	100 µin minimum	100 µin minimum
Boot Material	Heavy Duty Heat Shrink Boot	Heavy Duty Heat Shrink Boot

### Environmental Specifications

#### Temperature

Operating Range -55 to +165 deg C

**Compliance Certifications** (see [product page](#) for current document)

### Plotted and Other Data

Notes:

- Values at 25°C, sea level.

N Male to N Female Bulkhead Cable Using 402SS Series Coax with Heavy Duty Boot, 3.0 ft



**LCCA30010-FT3**

**How to Order**

Part Number Configuration:

**LCCA30010 - xx uu**



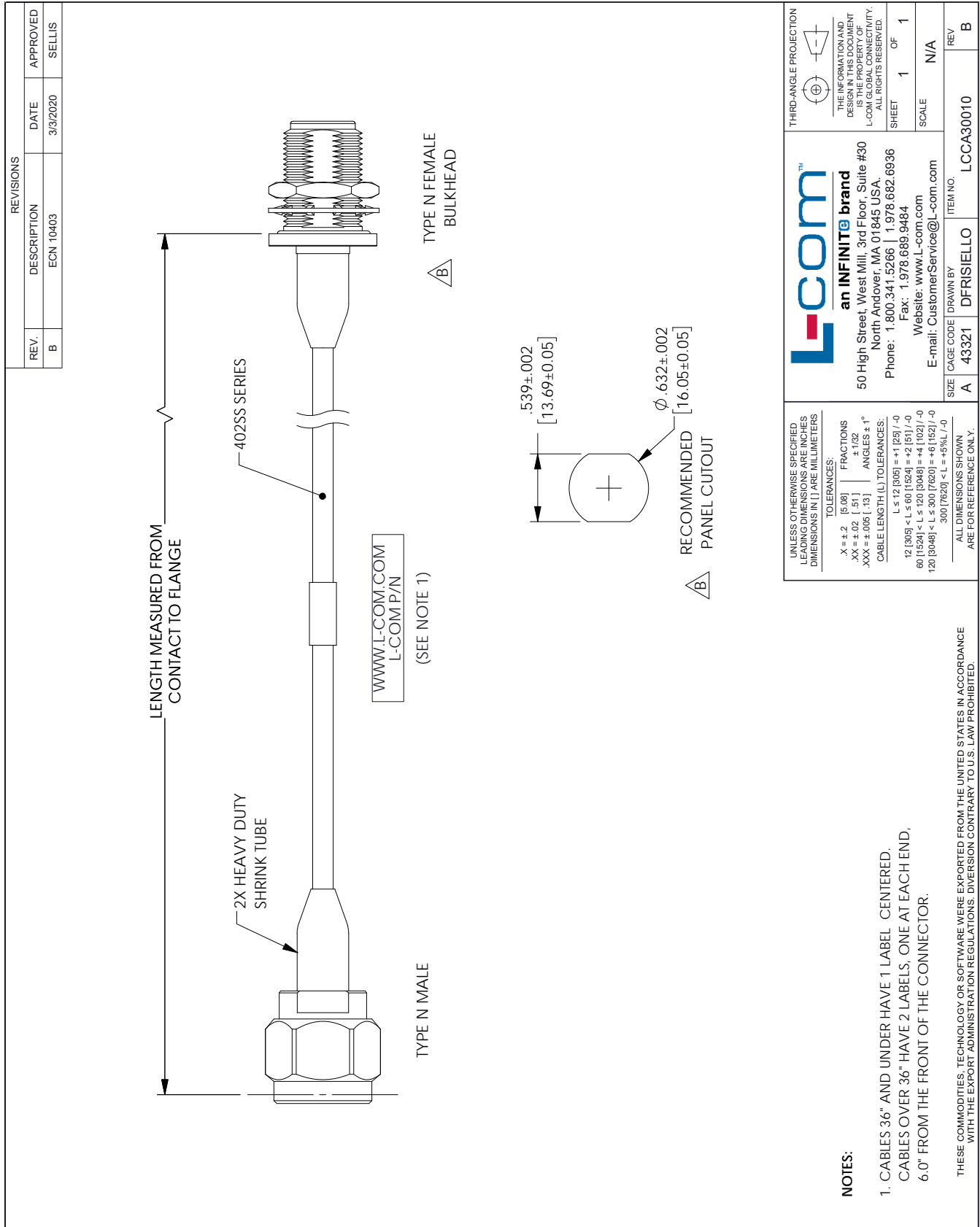
Example: LCCA30010-12 = 12 inches long cable  
LCCA30010-100cm = 100 cm long cable

N Male to N Female Bulkhead Cable Using 402SS Series Coax with Heavy Duty Boot, 3.0 ft from L-com has same day shipment for domestic and International orders. L-com is a leading manufacturer of wired and wireless connectivity products and committed to in-stock availability and same day shipping. Our portfolio includes coaxial cable assemblies, connectors, adapters and custom products as well as lightning and surge protectors, NEMA rated enclosures, and an RF product line which includes antennas, amplifiers, passive, and active components.

The information contained within this document is accurate to the best of our knowledge and representative of the part described herein. It may be necessary to make modifications to the part and/or the documentation of the part in order to impliment improvements. L-com reserves the right to make such changes as required. Unless otherwise stated, all specifications are nominal. L-com does not make any representation or warranty regarding the suitability of the part described herein for any particular purpose, and L-com does not assume liability arising out of the use of any part or document.ontained within this document is accurate to the best of our knowledge and representative of the part described herein. It may be necessary to make modifications to the part and/or the documentation of the part in order to impliment improvements. L-com reserves the right to make such changes as required. Unless otherwise stated, all specifications are nominal. L-com does not make any representation or warranty regarding the suitability of the part described herein for any particular purpose, and L-com does not assume liability arising out of the use of any part or document.

# N Male to N Female Bulkhead Cable Using 402SS Series Coax with Heavy Duty Boot, 3.0 ft

## L-com CAD Drawing



### NOTES:

1. CABLES 36" AND UNDER HAVE 1 LABEL, CENTERED.  
CABLES OVER 36" HAVE 2 LABELS, ONE AT EACH END,  
6.0" FROM THE FRONT OF THE CONNECTOR.

THESE COMMODITIES, TECHNOLOGY OR SOFTWARE WERE EXPORTED FROM THE UNITED STATES IN ACCORDANCE WITH THE EXPORT ADMINISTRATION REGULATIONS. DIVERSION CONTRARY TO U.S. LAW PROHIBITED.

T-Rev D