

6 dB Fixed Attenuator 75 Ohm F-Type Male to F-Type Female Brass Tri-Metal body rated 1 Watt DC to 1 GHz



LCAT7752-6

Features

- DC to 1 GHz Frequency Range
- F-Type Connectorized Design
- Attenuation 6 dB \pm 0.5 dB
- Max Power 1 Watt (CW)
- Max VSWR of 1.25:1

Applications

- Instrumentation
- Cable TV and Video Distribution
- Prototyping and Characterization
- Production Systems

Description

L-com carries a wide range of fixed attenuators with a broad selection of attenuation levels and frequency ranges. RF fixed attenuators lower the amplitude of a signal (attenuate) by specific amount and can be used in a wide variety of applications. These attenuators are used when signal levels need to be reduced to protect measurement equipment or other circuitry, to extend the range of power meters and amplifiers, and to impedance match circuits by reducing the VSWR seen by adjacent components. RF attenuators can prevent signal overload in amplifiers, receivers and detectors, adjusting the signal level to optimal power range.

Few RF components are as commonly used as fixed coaxial attenuators, and L-com carries one of the largest in-stock varieties and ships them same day. The 6 dB Fixed Attenuator LCAT7752-6 is rated to 1 Watt and operates from DC to 1 GHz. The versatile coaxial package uses type F male to type F female connectors and is also REACH compliant.

Electrical Specifications

Description	Minimum	Typical	Maximum	Units
Frequency Range	DC		1,000	MHz
Impedance		75		Ohms
Nominal Attenuation		6		dB
Attenuation Accuracy		\pm 0.5		dB
VSWR			1.25:1	
Input Power, CW			1	Watt

Mechanical Specifications

Size

Length	2.03 in [51.56 mm]
Width/Diameter	0.43 in [10.92 mm]
Height	0.43 in [10.92 mm]
Weight	0.034 lbs [15.42 g]
Body Material and Plating	Brass, Tri-Metal

Configuration

Design	Fixed, Bidirectional
Design Type	Standard
Package Style	Connectorized

6 dB Fixed Attenuator 75 Ohm F-Type Male to F-Type Female Brass Tri-Metal body rated 1 Watt DC to 1 GHz



LCAT7752-6

Connectors

Description	Connector 1	Connector 2
Type	F Male	F Female
Contact Material and Plating	Brass, Gold	Beryllium Copper, Gold
Dielectric Type	PTFE	PE
Body Material and Plating	Brass, Tri-Metal	Brass, Tri-Metal

Environmental Specifications

Temperature

Operating Range -50 to +80 deg C

Compliance Certifications (see [product page](#) for current document)

Plotted and Other Data

Notes:

Typical Performance Data

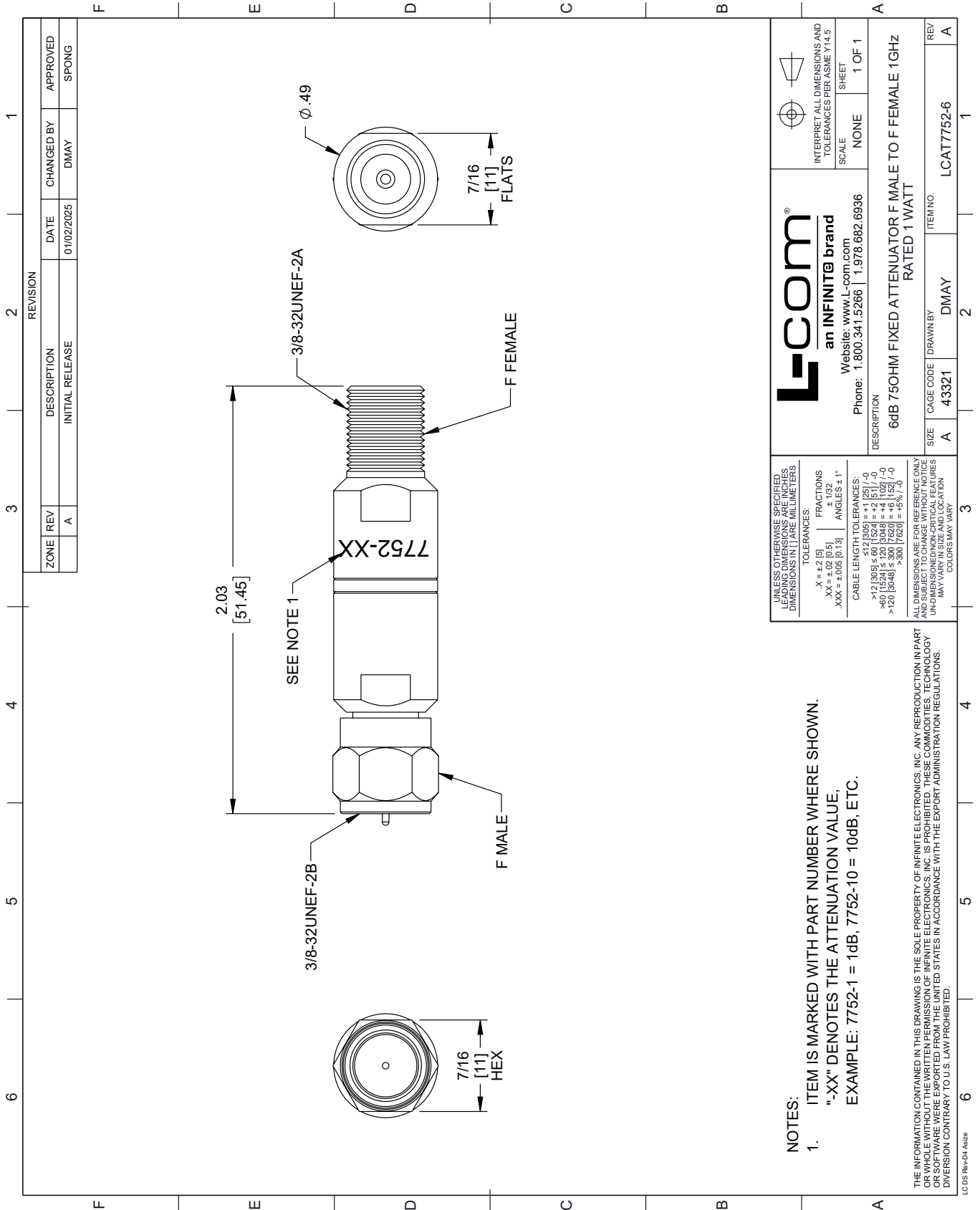
6 dB Fixed Attenuator 75 Ohm F-Type Male to F-Type Female Brass Tri-Metal body rated 1 Watt DC to 1 GHz from L-com has same day shipment for domestic and International orders. Our portfolio includes coaxial cable assemblies, connectors, adapters and custom products as well as lightning and surge protectors, NEMA rated enclosures, and an RF product line which includes antennas, amplifiers, passive, and active components.

URL: <https://www.l-com.com/6-db-fixed-attenuator-75-ohm-f-type-male-f-type-female-brass-tri-metal-body-rated-1-watt-dc-1-ghz-lcat7752-6-p.aspx>

The information contained within this document is accurate to the best of our knowledge and representative of the part described herein. It may be necessary to make modifications to the part and/or the documentation of the part in order to implement improvements. L-com reserves the right to make such changes as required. Unless otherwise stated, all specifications are nominal. L-com does not make any representation or warranty regarding the suitability of the part described herein for any particular purpose, and L-com does not assume liability arising out of the use of any part or document.

LCAT7752-6 CAD Drawing

6 dB Fixed Attenuator 75 Ohm F-Type Male to F-Type Female Brass Tri-Metal body rated 1 Watt DC to 1 GHz



REVISION		DATE	CHANGED BY	APPROVED
ZONE	REV	DESCRIPTION	INITIAL RELEASE	
A			DMAY	SPONG

L-com
an INFINITE brand
Website: www.L-com.com
Phone: 1.800.341.5266 | 1.978.682.6936

UNLESS OTHERWISE SPECIFIED, LEADING DIMENSIONS ARE IN INCHES. DIMENSIONS IN [] ARE MILLIMETERS.

TOLERANCES:
 .X = ±.2 [5]
 .XX = ±.02 [0.5]
 .XXX = ±.005 [0.13]
 FRACTIONS ± 1/32
 ANGLES ± 1°

CABLE LENGTH TOLERANCES:
 <12 [305] ≤ 60 [1524] = ±1 [25] / -0
 >60 [1524] ≤ 120 [3048] = ±4 [102] / -0
 >120 [3048] ≤ 300 [7620] = ±5% / -0

ALL DIMENSIONS ARE FOR REFERENCE ONLY. UNDIMENSIONED NON-CRITICAL FEATURES MAY VARY IN SIZE AND LOCATION. COLORS MAY VARY.

INTERPRET ALL DIMENSIONS AND TOLERANCES PER ASME Y14.5
SCALE NONE SHEET 1 OF 1

DESCRIPTION: 6dB 75OHM FIXED ATTENUATOR F MALE TO F FEMALE 1GHZ RATED 1 WATT

SIZE	CAGE CODE	DRAWN BY	ITEM NO.
A	43321	DMAY	LCAT7752-6

NOTES:

- ITEM IS MARKED WITH PART NUMBER WHERE SHOWN. "-XX" DENOTES THE ATTENUATION VALUE, EXAMPLE: 7752-1 = 1dB, 7752-10 = 10dB, ETC.

THE INFORMATION CONTAINED IN THIS DRAWING IS THE SOLE PROPERTY OF INFINITE ELECTRONICS, INC. ANY REPRODUCTION IN PART OR WHOLE WITHOUT THE WRITTEN PERMISSION OF INFINITE ELECTRONICS, INC. IS PROHIBITED. THESE COMMODITIES, TECHNOLOGY OR SERVICE WERE EXPORTED FROM THE UNITED STATES IN ACCORDANCE WITH THE EXPORT ADMINISTRATION REGULATIONS. DIVISION CONTRARY TO U.S. LAW PROHIBITED.

LC 05 Rev-D4 Atsize