

4 dB Fixed Attenuator SMA Male (Plug) to SMA Female (Jack)
DC to 12 GHz Rated to 2 Watts, Brass Body, 1.35:1 VSWR



LCAT7467-4

Features

- DC to 12 GHz Frequency Range
- SMA Connectorized Design
- Attenuation 4 dB \pm 1 dB
- Max Power 2 Watts (CW)
- Max VSWR of 1.35:1

Applications

- Instrumentation
- Precision Measurements
- Prototyping and Characterization
- Production Systems
- WIFI 6E
- 5G Cellular bands

Description

L-com carries a wide range of fixed attenuators with a broad selection of attenuation levels, frequency ranges, and power dissipation ranges. RF microwave attenuators (also known as RF pads) lower the amplitude of a signal (attenuate) a known amount and can be used in a wide variety of applications. These attenuator pads are used when a signal needs to be reduced to protect measurement equipment or other circuitry, to extend the range of power meters and amplifiers, and to impedance match circuits by reducing the VSWR seen by adjacent components. RF attenuators can prevent signal overload in amplifiers, receivers and detectors, adjusting the signal level to a range that is optimal.

Few RF components are as commonly used as fixed coaxial attenuators, and L-com carries one of the largest in-stock varieties and ships them same day. The 4 dB Fixed Attenuator LCAT7467-4 is rated to and operates from DC to 12 GHz. The versatile coaxial package uses SMA female to SMA male connectors.

Electrical Specifications

Description	Minimum	Typical	Maximum	Units
Frequency Range	DC		12	GHz
Impedance		50		Ohms
Nominal Attenuation		4		dB
VSWR			1.35:1	
Input Power, CW			2	Watts

Specifications by Frequency

Description	F1	F2	F3	F4	F5	Units
Frequency Range	DC to 2	2 to 5	5 to 10	10 to 12		GHz
VSWR, Max	1.15:1	1.25:1	1.35:1	1.35:1		
Attenuation Accuracy, Typ	0.2	0.3	0.5	1		dB

Mechanical Specifications

Size

- Length 0.969 in [24.61 mm]
- Width/Diameter 0.315 in [8 mm]
- Height 0.315 in [8 mm]
- Weight 0.015 lbs [6.8 g]
- Body Material and Plating Brass, Gold

4 dB Fixed Attenuator SMA Male (Plug) to SMA Female (Jack)
DC to 12 GHz Rated to 2 Watts, Brass Body, 1.35:1 VSWR



LCAT7467-4

Configuration

Design	Fixed, Bi-Directional
Package Style	Conectorized

Connectors

Description	Connector 1	Connector 2
Type	SMA Female	SMA Male
Contact Material and Plating	Beryllium Copper, Gold	Beryllium Copper, Gold
Dielectric Type	Teflon	Teflon
Body Material and Plating	Brass, Gold	Brass, Gold

Environmental Specifications

Temperature

Compliance Certifications (see [product page](#) for current document)

Plotted and Other Data

Notes:

Typical Performance Data

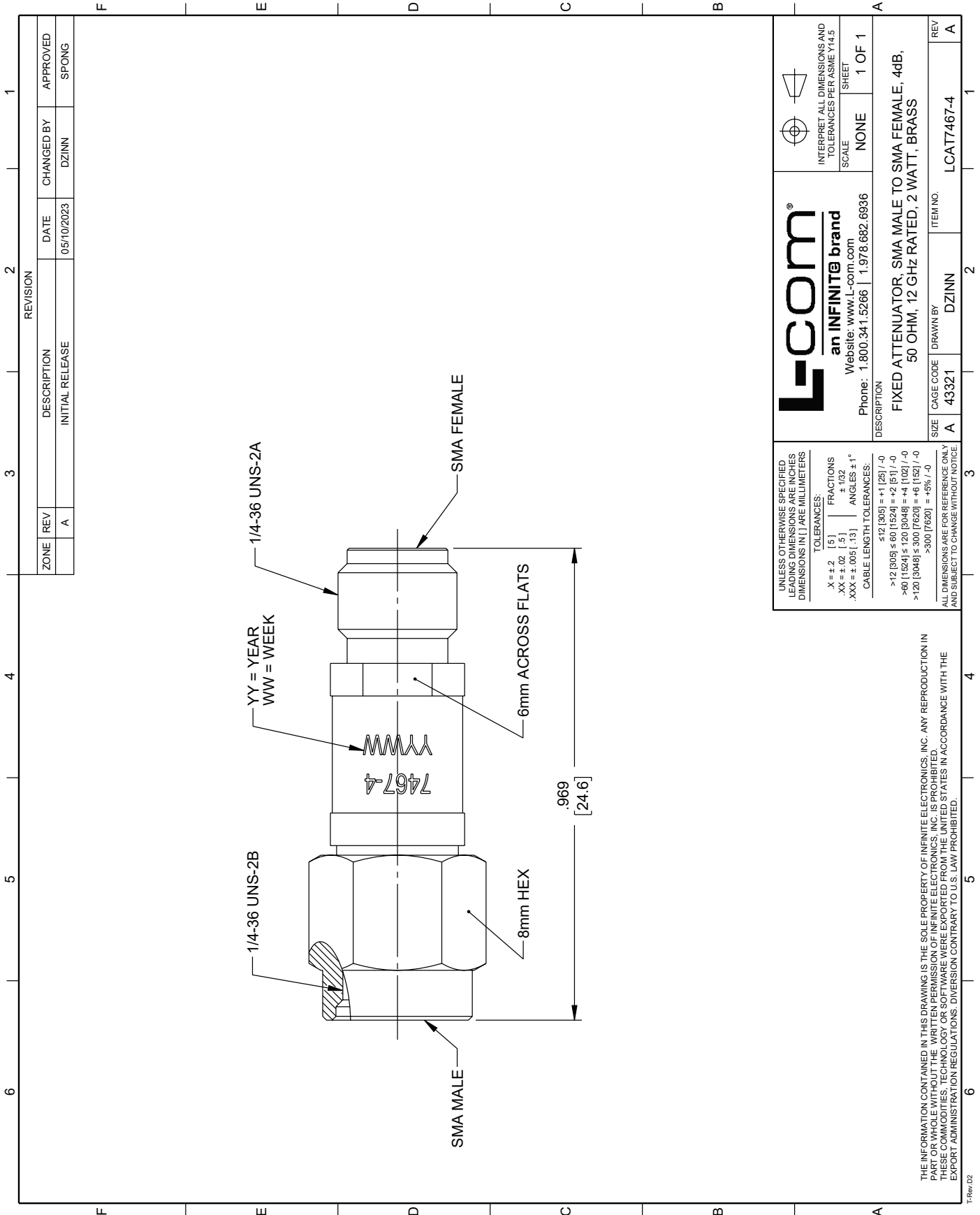
4 dB Fixed Attenuator SMA Male (Plug) to SMA Female (Jack) DC to 12 GHz Rated to 2 Watts, Brass Body, 1.35:1 VSWR from L-com has same day shipment for domestic and International orders. Our portfolio includes coaxial cable assemblies, connectors, adapters and custom products as well as lightning and surge protectors, NEMA rated enclosures, and an RF product line which includes antennas, amplifiers, passive, and active components.

URL: <https://www.l-com.com/4-db-fixed-attenuator-sma-male-plug-sma-female-jack-dc-12-ghz-rated-2-watts-brass-body-1.35-1-vswr-lcat7467-4-p.aspx>

The information contained within this document is accurate to the best of our knowledge and representative of the part described herein. It may be necessary to make modifications to the part and/or the documentation of the part in order to impliment improvements. L-com reserves the right to make such changes as required. Unless otherwise stated, all specifications are nominal. L-com does not make any representation or warranty regarding the suitability of the part described herein for any particular purpose, and L-com does not assume liability arising out of the use of any part or document.

LCA7467-4 CAD Drawing

4 dB Fixed Attenuator SMA Male (Plug) to SMA Female (Jack) DC to 12 GHz Rated to 2 Watts, Brass Body, 1.35:1 VSWR



ZONE	REV	DESCRIPTION	DATE	CHANGED BY	APPROVED
	A	INITIAL RELEASE	05/10/2023	DZINN	SPONG

UNLESS OTHERWISE SPECIFIED
ALL DIMENSIONS ARE IN INCHES
DIMENSIONS IN [] ARE MILLIMETERS

TOLERANCES:
 .X = ±.2 [5] FRACTIONS ± 1/32
 .XX = ±.02 [1.5] ANGLES ± 1°
 .XXX = ±.005 [1.3] CABLE LENGTH TOLERANCES:
 ≤12 [305] = ±1 [25] / -0
 >12 [305] ≤ 60 [1524] = ±2 [51] / -0
 >60 [1524] ≤ 120 [3048] = ±4 [102] / -0
 >120 [3048] ≤ 300 [7620] = ±8 [152] / -0
 >300 [7620] = ±8% / -0

ALL DIMENSIONS ARE FOR REFERENCE ONLY
AND SUBJECT TO CHANGE WITHOUT NOTICE

THE INFORMATION CONTAINED IN THIS DRAWING IS THE SOLE PROPERTY OF INFINITE ELECTRONICS, INC. ANY REPRODUCTION IN PART OR WHOLE WITHOUT THE WRITTEN PERMISSION OF INFINITE ELECTRONICS, INC. IS PROHIBITED. THESE COMMODITIES, TECHNOLOGY OR SOFTWARE WERE EXPORTED FROM THE UNITED STATES IN ACCORDANCE WITH THE EXPORT ADMINISTRATION REGULATIONS. DIVERSION CONTRARY TO U.S. LAW PROHIBITED.

Interpret all dimensions and tolerances per ASME Y14.5

SCALE: NONE

SHEET: 1 OF 1

L-com
an INFINITE brand
Website: www.L-com.com
Phone: 1.800.341.5266 | 1.978.682.6936

DESCRIPTION: FIXED ATTENUATOR, SMA MALE TO SMA FEMALE, 4dB, 50 OHM, 12 GHz RATED, 2 WATT, BRASS

SIZE	A	CAGE CODE	43321	DRAWN BY	DZINN	ITEM NO.	LCA7467-4
REV	A						