



an INFINIT® brand



2W/5dB RF Fixed Attenuator, N Male to N Female Brass Nickel Body Up to 6 GHz

RF Fixed Attenuators Technical Data Sheet

LCAT1004-05

Features

- N-Type connector interface
- DC to 6 GHz Frequency Range
- Max Power 2 Watt (CW)
- VSWR < 1.3:1

Applications

- Instrumentation
- RF test systems
- Prototyping and characterization
- Production systems
- Precision measurements

Description

L-com carries a wide range of fixed attenuators with a broad selection of attenuation levels and frequency ranges. RF fixed attenuators lower the amplitude of a signal (attenuate) by specific amount and can be used in a wide variety of applications. These attenuators are used when signal levels need to be reduced to protect measurement equipment or other circuitry, to extend the range of power meters and amplifiers, and to impedance match circuits by reducing the VSWR seen by adjacent components. RF attenuators can prevent signal overload in amplifiers, receivers and detectors, adjusting the signal level to optimal power range.

Few RF components are as commonly used as fixed coaxial attenuators, and L-com carries one of the largest in-stock varieties and ships them same day. The 5 dB Fixed Attenuator LCAT1004-05 is rated to 2 Watts and operates from DC to 6 GHz. The versatile coaxial package uses type N male to type N female connectors and is also RoHS compliant.

Electrical Specifications

Description	Minimum	Typical	Maximum	Units
Frequency Range	DC		6	GHz
Impedance		50		Ohms
Nominal Attenuation		5		dB
Attenuation Accuracy		0.5		dB
VSWR			1.3:1	
Input Power, Peak 5µs pulse with 0.5% duty cycle			500	Watts
Input Power, CW 0.5W @ 125°C			2	Watts

Mechanical Specifications

Size

Length	2.7559 in [70 mm]
Width/Diameter	0.7874 in [20 mm]
Weight	0.1543 lbs [69.99 g]
Body Material and Plating	Brass, Nickel

Configuration

Design	Fixed
--------	-------



an INFINIT[®] brand



2W/5dB RF Fixed Attenuator, N Male to N
Female Brass Nickel Body Up to 6 GHz

RF Fixed Attenuators Technical Data Sheet

LCAT1004-05

Connectors

Description	Connector 1	Connector 2
Type	N Male	N Female
Contact Material and Plating	Brass, Gold	Beryllium Copper, Gold
Outer Conductor Material and Plating	Brass, Nickel	Brass, Nickel
Body Material and Plating	Brass, Nickel	Brass, Nickel

Environmental Specifications

Temperature

Operating Range

-55 to +125 deg C

Compliance Certifications

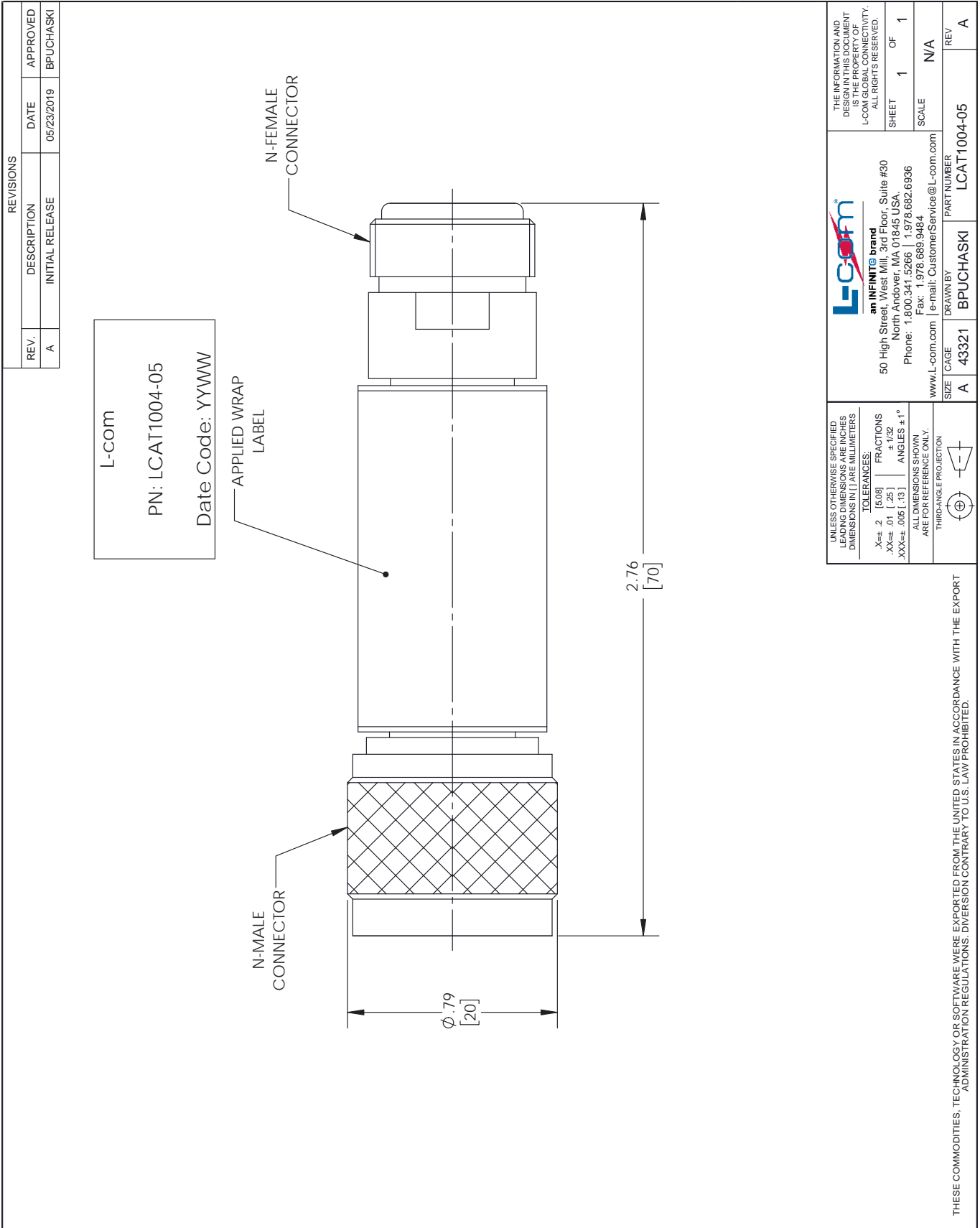
Plotted and Other Data

Our portfolio includes coaxial cable assemblies, connectors, adapters and custom products as well as lightning and surge protectors, NEMA rated enclosures, and an RF product line which includes antennas, amplifiers, passive, and active components.

The information contained in this document is accurate to the best of our knowledge and representative of the part described herein. It may be necessary to make modifications to the part and/or the documentation of the part, in order to implement improvements. L-com reserves the right to make such changes as required. Unless otherwise stated, all specifications are nominal. L-com does not make any representation or warranty regarding the suitability of the part described herein for any particular purpose, and L-com does not assume any liability arising out of the use of any part or documentation.

LCAT1004-05 CAD Drawing

2W/5dB RF Fixed Attenuator, N Male to N Female Brass Nickel Body Up to 6 GHz



UNLESS OTHERWISE SPECIFIED LEADING DIMENSIONS ARE INCHES DIMENSIONS IN [] ARE MILLIMETERS			
TOLERANCES:		THE INFORMATION AND DESIGNATIONS CONTAINED HEREIN IS THE PROPERTY OF L-COM GLOBAL CONNECTIVITY. ALL RIGHTS RESERVED.	
X== 2 [5.08]	FRACTIONS ± 1/32	SHEET 1 OF 1	SCALE N/A
.XX== .01 [.25]	ANGLES ± 1°		
.XXX== .005 [.13]	ALL DIMENSIONS SHOWN ARE FOR REFERENCE ONLY.		
THIRD ANGLE PROJECTION		DRAWN BY BPUCHASKI	PART NUMBER LCAT1004-05
www.L-com.com 50 High Street, West Mill, 3rd Floor, Suite #30 North Andover, MA 01845 USA. Phone: 1.800.341.5266 1.978.682.6836 Fax: 1.978.689.9484 e-mail: CustomerService@L-com.com		SIZE A	REV A

THESE COMMODITIES, TECHNOLOGY OR SOFTWARE WERE EXPORTED FROM THE UNITED STATES IN ACCORDANCE WITH THE EXPORT ADMINISTRATION REGULATIONS. DIVERSION CONTRARY TO U.S. LAW PROHIBITED.

T-Rev.B