

## 413 to 423 MHz Rubber Duck Antenna SMA Male



### LCANRBD1069

#### Features

- 413 MHz to 423 MHz
- SMA Male connector
- VSWR 2:1
- Linear polarization

#### Applications

- LPWAN
- ISM
- Weightless-P
- Fixed and Mobile Devices

#### Description

The LCANRBD1069 is a high-quality single-band rubber duck antenna with a frequency range of 413 MHz to 423 MHz. L-com's omnidirectional rubber duck antenna is 2 inches tall and 0.37 inches wide.

The LCANRBD1069 rubber duck antenna from L-com features a SMA Male connector with an input VSWR (voltage standing wave ratio) of 2:1.

L-com's linearly polarized antenna can operate at temperatures ranging from -40 °C to 60 °C. This single-band rubber duck antenna is offered with expert technical support, PDF datasheets, and CAD drawings with dimensions and specifications.

#### Configuration

Design	Rubber Duck
Band Type	Single
Radiation Pattern	Omni Directional
Polarization	Linear
Connector Type	SMA Male
Number of Ports	1

#### Electrical Specifications

Description	Minimum	Typical	Maximum	Units
Frequency Range	413		423	MHz
Center Frequency		418		MHz
Input VSWR			2:1	
Impedance		50		Ohms

#### Mechanical Specifications

Radome Material	ABS
-----------------	-----

#### Size

Length	2 in [50.8 mm]
Width	0.37 in [9.4 mm]
Height	0.37 in [9.4 mm]
Weight	0.2 lbs [90.72 g]

## 413 to 423 MHz Rubber Duck Antenna SMA Male



### LCANRBD1069

#### Environmental Specifications

<b>Temperature</b>	
Operating Range	-40 to +60 deg C
Storage Range	-40 to +80 deg C
Ingress Protection	IP65

**Compliance Certifications** (see [product page](#) for current document)

#### Plotted and Other Data

Notes:

#### Typical Radiation Pattern

#### Appendix

**Electrical Downtilt:** Angle in the antenna's elevation pattern in which the maximum gain occurs.

**Gain:** Antenna's average gain.

**Front to Back Ratio @ 180°±30°:** Average difference between the antenna's maximum gain and the maximum gain in the antenna's back lobe over ±30° angles.

**Cross-polarization Ratio (dB):** Typical difference between the co-polarization and cross-polarization gain across the sector's 3 dB Beam Width.

Dedicated to serving the needs of the Wireless Internet Service Provider (WISP) market, KP Performance Antennas offers purpose built products that reliably perform in the field. KP Performance Antennas product line consists of Yagi, Grid, Omni, Dish and other style antennas that operate in the 900 MHz, 2.4 GHz, 3 GHz, and 5 GHz frequencies.

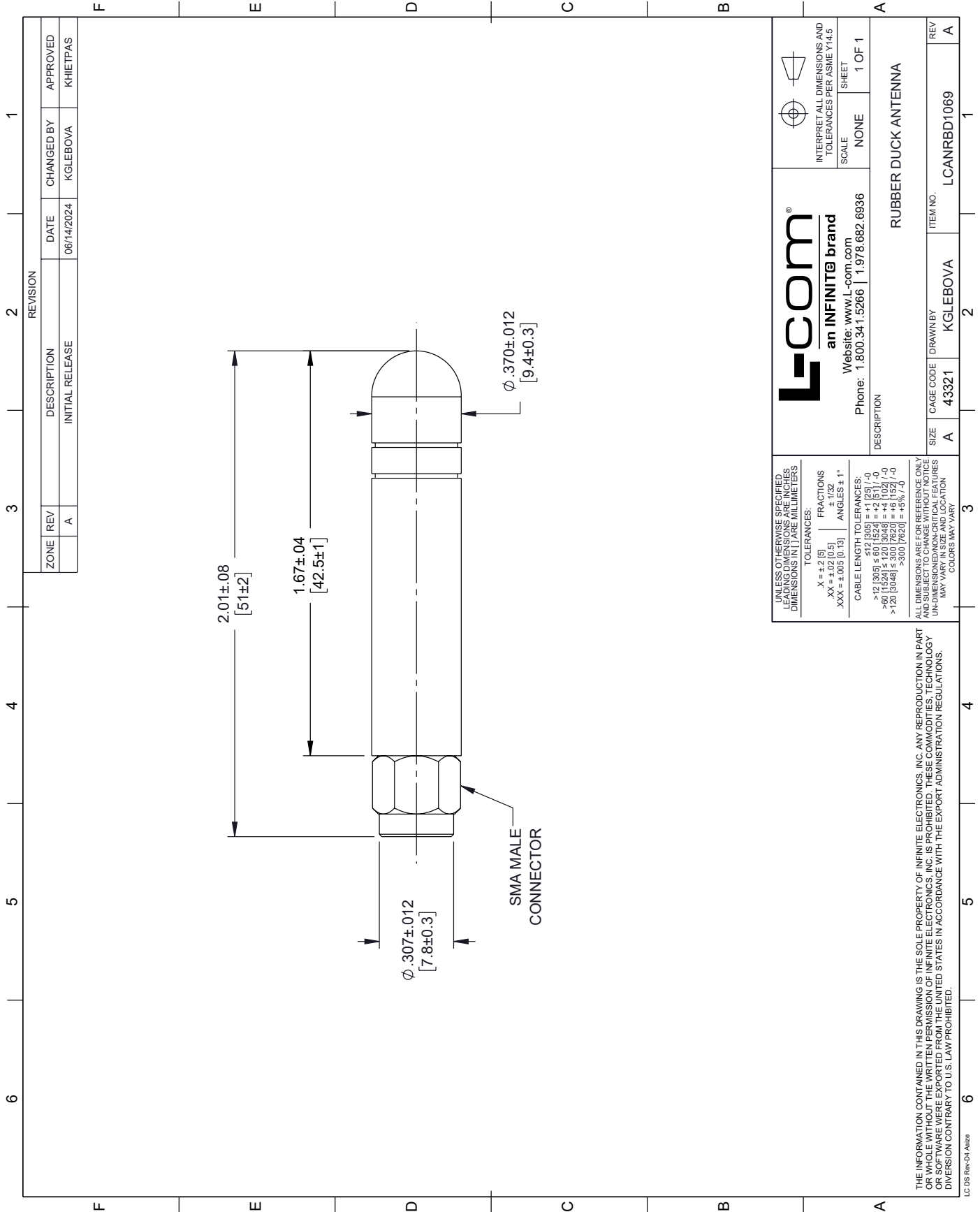
413 to 423 MHz Rubber Duck Antenna SMA Male from L-com has same day shipment for domestic and International orders. Our portfolio includes coaxial cable assemblies, connectors, adapters and custom products as well as lightning and surge protectors, NEMA rated enclosures, and an RF product line which includes antennas, amplifiers, passive, and active components.

URL: <https://www.l-com.com/413-423-mhz-rubber-duck-antenna-sma-male-lcanrbd1069-p.aspx>


The information contained within this document is accurate to the best of our knowledge and representative of the part described herein. It may be necessary to make modifications to the part and/or the documentation of the part in order to implement improvements. L-com reserves the right to make such changes as required. Unless otherwise stated, all specifications are nominal. L-com does not make any representation or warranty regarding the suitability of the part described herein for any particular purpose, and L-com does not assume liability arising out of the use of any part or document.

# LCANRBD1069 CAD Drawing

## 413 to 423 MHz Rubber Duck Antenna SMA Male



REVISION		DATE	CHANGED BY	APPROVED
ZONE	REV	DESCRIPTION	DATE	CHANGED BY
	A	INITIAL RELEASE	06/14/2024	KGLEBOVA
				KHIETPAS

 <b>an INFINITE brand</b> Website: <a href="http://www.L-com.com">www.L-com.com</a> Phone: 1.800.341.5266   1.978.682.6936		INTERPRET ALL DIMENSIONS AND TOLERANCES PER ASME Y14.5	
UNLESS OTHERWISE SPECIFIED LEADING DIMENSIONS ARE INCHES DIMENSIONS IN PARENS ARE MILLIMETERS		SCALE: NONE SHEET: 1 OF 1	
TOLERANCES: .X = ±.2 [5] FRACTIONS ± 1/32 .XX = ±.02 [0.5] ANGLES ± 1° .XXX = ±.005 [0.13]		DESCRIPTION: RUBBER DUCK ANTENNA	
CABLE LENGTH TOLERANCES: >12 [305] ≤ 60 [1524] = +2 [51] / -0 >60 [1524] ≤ 120 [3048] = +4 [102] / -0 >120 [3048] ≤ 300 [7620] = +5% / -0		REV: A	
ALL DIMENSIONS ARE FOR REFERENCE ONLY UNLESS OTHERWISE SPECIFIED. DIMENSIONS ON CRITICAL FEATURES MAY VARY IN SIZE AND LOCATION. COLORS MAY VARY.		SIZE: A CAGE CODE: 43321 DRAWN BY: KGLEBOVA ITEM NO.: LCANRBD1069	