

425 to 440 MHz Rubber Duck Antenna SMA Male Mount



LCANRBD1061

Features

- 425 MHz to 440 MHz
- SMA Male connector
- VSWR 2:1
- Linear polarization

Applications

- LPWAN
- ISM
- Weightless-P
- Fixed and Mobile Devices

Description

The LCANRBD1061 is a high-quality single-band rubber duck antenna with a frequency range of 425 MHz to 440 MHz. L-com's omnidirectional rubber duck antenna is 5.91 inches tall and 0.54 inches wide.

The LCANRBD1061 rubber duck antenna from L-com features a SMA Male connector with an input VSWR (voltage standing wave ratio) of 2:1.

L-com's linearly polarized antenna can operate at temperatures ranging from -40 °C to 60 °C. This single-band rubber duck antenna is offered with expert technical support, PDF datasheets, and CAD drawings with dimensions and specifications.

Configuration

Design	Rubber Duck
Band Type	Single
Radiation Pattern	Omni Directional
Polarization	Linear
Connector Type	SMA Male
Number of Ports	1

Electrical Specifications

Description	Minimum	Typical	Maximum	Units
Frequency Range	425		440	MHz
Center Frequency		430		MHz
Input VSWR			2:1	
Impedance		50		Ohms

Mechanical Specifications

Radome Material	TPEE/ABS
-----------------	----------

Size

Length	5.91 in [150.11 mm]
Width	0.54 in [13.72 mm]
Height	0.54 in [13.72 mm]
Weight	0.2 lbs [90.72 g]

425 to 440 MHz Rubber Duck Antenna SMA Male Mount



LCANRBD1061

Environmental Specifications

Temperature

Operating Range	-40 to +65 deg C
Storage Range	-40 to +80 deg C
Ingress Protection	IP65

Compliance Certifications (see [product page](#) for current document)

Plotted and Other Data

Notes:

Typical Radiation Pattern

Appendix

Electrical Downtilt: Angle in the antenna's elevation pattern in which the maximum gain occurs.

Gain: Antenna's average gain.

Front to Back Ratio @ 180°±30°: Average difference between the antenna's maximum gain and the maximum gain in the antenna's back lobe over ±30° angles.

Cross-polarization Ratio (dB): Typical difference between the co-polarization and cross-polarization gain across the sector's 3 dB Beam Width.

Dedicated to serving the needs of the Wireless Internet Service Provider (WISP) market, KP Performance Antennas offers purpose built products that reliably perform in the field. KP Performance Antennas product line consists of Yagi, Grid, Omni, Dish and other style antennas that operate in the 900 MHz, 2.4 GHz, 3 GHz, and 5 GHz frequencies.

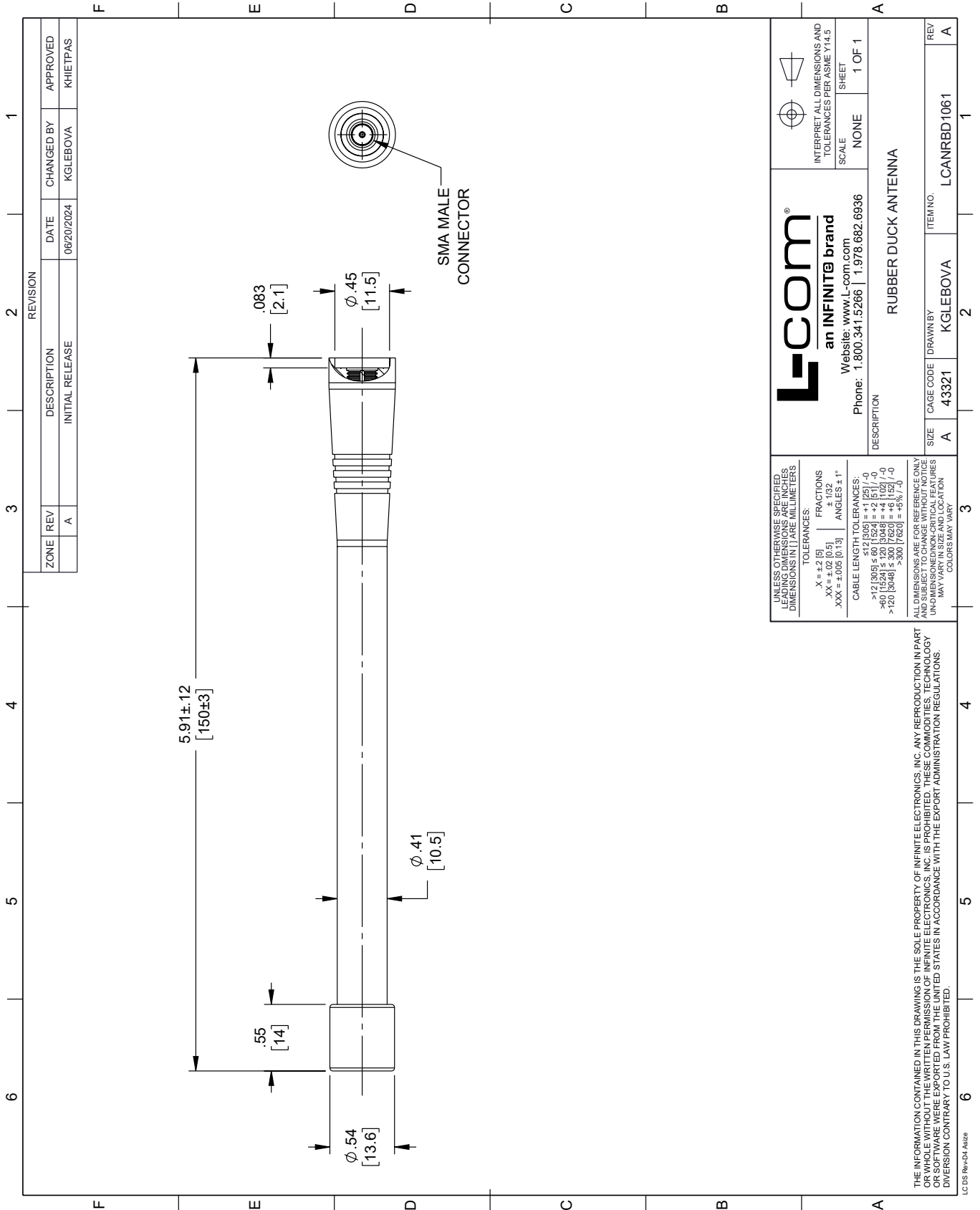
425 to 440 MHz Rubber Duck Antenna SMA Male Mount from L-com has same day shipment for domestic and International orders. Our portfolio includes coaxial cable assemblies, connectors, adapters and custom products as well as lightning and surge protectors, NEMA rated enclosures, and an RF product line which includes antennas, amplifiers, passive, and active components.

URL: <https://www.l-com.com/425-440-mhz-rubber-duck-antenna-sma-male-mount-lcanrbd1061-p.aspx>

The information contained within this document is accurate to the best of our knowledge and representative of the part described herein. It may be necessary to make modifications to the part and/or the documentation of the part in order to implement improvements. L-com reserves the right to make such changes as required. Unless otherwise stated, all specifications are nominal. L-com does not make any representation or warranty regarding the suitability of the part described herein for any particular purpose, and L-com does not assume liability arising out of the use of any part or document.

LCANRBD1061 CAD Drawing

425 to 440 MHz Rubber Duck Antenna SMA Male Mount



REVISION		DATE	CHANGED BY	APPROVED	
ZONE	REV	DESCRIPTION	DATE	CHANGED BY	APPROVED
	A	INITIAL RELEASE	06/20/2024	KGLEBOVA	KHIEPPAS

 an INFINITE brand Website: www.L-com.com Phone: 1.800.341.5266 1.978.682.6936		INTERPRET ALL DIMENSIONS AND TOLERANCES PER ASME Y14.5
		SCALE: NONE SHEET: 1 OF 1
DESCRIPTION: RUBBER DUCK ANTENNA		
SIZE: A	CAGE CODE: 43321	DRAWN BY: KGLEBOVA
ITEM NO.: LCANRBD1061		REV: A

UNLESS OTHERWISE SPECIFIED, LEADING DIMENSIONS ARE IN INCHES. DIMENSIONS IN [] ARE MILLIMETERS.

TOLERANCES:
 .X = ±.2 [5] FRACTIONS ± 1/32
 .XX = ±.02 [0.5] ANGLES ± 1°
 .XXX = ±.005 [0.13]

CABLE LENGTH TOLERANCES:
 ≤ 12 [305] ± .005 [0.13]
 > 12 [305] ≤ 60 [1524] ± .005 [0.13]
 > 60 [1524] ≤ 120 [3048] ± .005 [0.13]
 > 120 [3048] ± .005 [0.13]

ALL DIMENSIONS ARE FOR REFERENCE ONLY. UNDIMENSIONED/NON-CRITICAL FEATURES MAY VARY IN SIZE AND LOCATION. COLORS MAY VARY.

THE INFORMATION CONTAINED IN THIS DRAWING IS THE SOLE PROPERTY OF INFINITE ELECTRONICS, INC. ANY REPRODUCTION IN PART OR WHOLE WITHOUT THE WRITTEN PERMISSION OF INFINITE ELECTRONICS, INC. IS PROHIBITED. THESE COMMODITIES, TECHNOLOGY OR SERVICES ARE EXPORTED FROM THE UNITED STATES IN ACCORDANCE WITH THE EXPORT ADMINISTRATION REGULATIONS. DIVISION CONTRARY TO U.S. LAW PROHIBITED.

LC 05 Rev-D4 Atsize