

650 MHz to 3.31 GHz LTE Antenna, Tilt and Swivel,
Monopole, SMA Male Connector

LCANRBD1053



Features

- 650-960 / 1937-2498 / 3310 MHz, 1 dBi Gain
- SMA male connector
- Plug and play
- VSWR < 3:1
- Vertical polarization
- Monopole antenna

Applications

- LMR and Public Safety
- Wireless communications
- IOT sensors and trackers
- Wireless microphones
- Remote control
- Industrial monitoring
- Amateur radio
- 2.4 GHz Wi-Fi and ISM applications
- 802.11 a/b/g/n/ax, wireless hotspots
- 5G bands: n5, n8, n12, n13, n14, n18, n20, n26, n28, n30, n34, n40, n53, n65, n71, n81, n82, n83, n85, n89, n91, n92, n93, n94, n95, n97, n100, n105
- 4G LTE bands: B1, B4, B5, B6, B8, B12, B13, B14, B17, B18, B19, B20, B23, B26, B27, B28, B30, B34, B36, B40, B68, B71, B85

Description

The L-com LCANRBD1053 is an omni antenna operating from 650 MHz to 3.3 GHz frequency range. The SMA male connector on the communication antenna enables it to be used vertically or at any angle in between. Our rubber duck antenna is 0.39 inches wide, 3.09 inches long, and 0.39 inches tall. Our LTE tilt-and-swivel antenna is specifically stocked to be available for same business day shipment.

This monopole omnidirectional antenna has a vertical polarization and an SMA male connector. Our LCANRBD1053 antenna transmits high power signals, increasing the signal strength, thus providing improved coverage, better broadcast control, and faster speed. Our black omnidirectional antenna functions between -20 to 60 degrees C and has 50 Ohm impedance.

L-com WiFi antenna is ideal for LMR, public safety, security, construction, wireless communications, IOT sensors, IOT trackers, wireless microphones, remote control, industrial monitoring and data transmission, amateur radio, WISP applications, 5G wireless network, RFID, 2.4 GHz Wi-Fi and ISM applications, and Bluetooth. These antennas have a sturdy design and a high power handling capacity. Our high-quality LCANRBD1053 omnidirectional antenna has a maximum input VSWR of 4:1, which results in the best power transfer and reduced losses.

The omni directional antenna is just one of many fiber optic products that are available from L-com for international and domestic orders. We are a global leader in wired and wireless connectivity products, offering a wide range of solutions across many key industries, including electronics, medical, industrial automation, military, and telecommunication. L-com also stocks a wide selection of 650 MHz to 3.3 GHz antennas that ship same-day from our warehouse.

Configuration

Design	Rubber Duck
Band Type	Multi
Radiation Pattern	Omni Directional
Polarization	Vertical
Connector Type	SMA Male

Click the following link (or enter part number in "SEARCH" on website) to obtain additional part information including price, inventory and certifications:
[650 MHz to 3.31 GHz LTE Antenna, Tilt and Swivel, Monopole, SMA Male Connector LCANRBD1053](#)

650 MHz to 3.31 GHz LTE Antenna, Tilt and Swivel,
Monopole, SMA Male Connector



LCANRBD1053

Electrical Specifications

Description	Minimum	Typical	Maximum	Units
Frequency Range	650		3,310	MHz
Impedance		50		Ohms
Input Power			10	Watts

Specifications by Band

Description	Band 1	Band 2	Band 3	Band 4	Band 5	Units
Range	0.65-0.96	1.937-2.498	3.31			GHz
Gain	0	1	1.3			dBi
VSWR Max	3:01	3:01	1.7:1			

Mechanical Specifications

Radome Material	ABS
Size	
Length	3.09 in [78.49 mm]
Width	0.39 in [9.91 mm]
Height	0.39 in [9.91 mm]
Weight	0.01804 lbs [8.18 g]

Environmental Specifications

Temperature	
Operating Range	-20 to +60 deg C
Storage Range	-30 to +70 deg C
Environment	Waterproof
Ingress Protection	IP65

Compliance Certifications (see [product page](#) for current document)

Plotted and Other Data

Notes:

650 MHz to 3.31 GHz LTE Antenna, Tilt and Swivel, Monopole, SMA Male Connector from L-com has same day shipment for domestic and International orders. Our portfolio includes coaxial cable assemblies, connectors, adapters and custom products as well as lightning and surge protectors, NEMA rated enclosures, and an RF product line which includes antennas, amplifiers, passive, and active

650 MHz to 3.31 GHz LTE Antenna, Tilt and Swivel,
Monopole, SMA Male Connector

LCANRBD1053

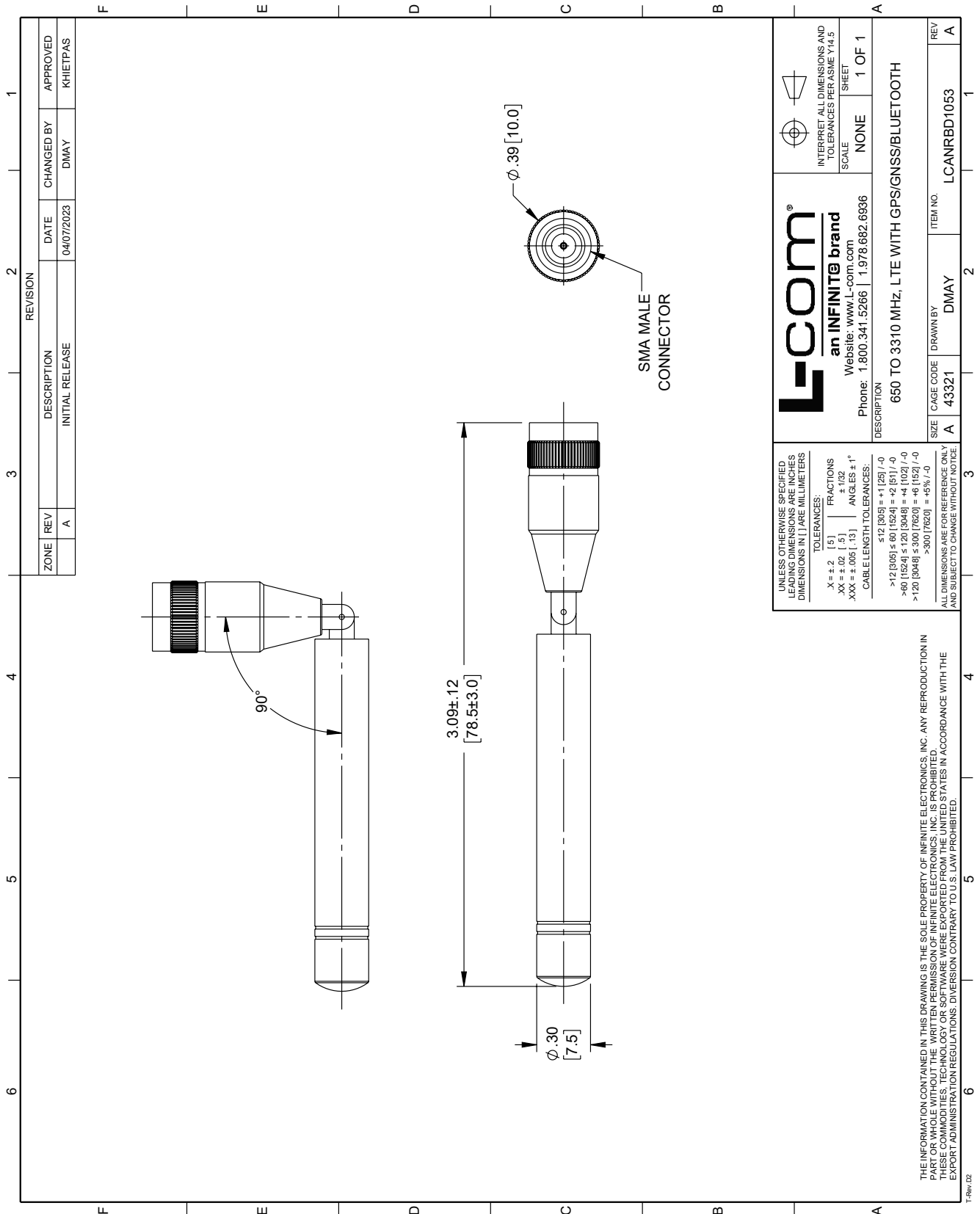


components.

The information contained within this document is accurate to the best of our knowledge and representative of the part described herein. It may be necessary to make modifications to the part and/or the documentation of the part in order to impliment improvements. L-com reserves the right to make such changes as required. Unless otherwise stated, all specifications are nominal. L-com does not make any representation or warranty regarding the suitability of the part described herein for any particular purpose, and L-com does not assume liability arising out of the use of any part or document.

650 MHz to 3.31 GHz LTE Antenna, Tilt and Swivel, Monopole, SMA Male Connector

L-com CAD Drawing



ZONE		REVISION		DATE		APPROVED	
A	INITIAL RELEASE	04/07/2023	DMAY	CHANGED BY	APPROVED	KHIEFPAS	

L-com
 an INFINITE brand
 Website: www.L-com.com
 Phone: 1.800.341.5266 | 1.978.682.6936

INTERPRET ALL DIMENSIONS AND TOLERANCES PER ASME Y14.5
 SCALE: NONE
 SHEET: 1 OF 1

DESCRIPTION: 650 TO 3310 MHz, LTE WITH GPS/GNSS/BLUETOOTH
 SIZE: A
 CAGE CODE: 43321
 DRAWN BY: DMAY
 ITEM NO.: LCANRBD1053

UNLESS OTHERWISE SPECIFIED, LEADING DIMENSIONS ARE INCHES, DIMENSIONS IN [] ARE MILLIMETERS.
 TOLERANCES:
 X = ±.2 [5] FRACTIONS
 XX = ±.02 [1.5] ANGLES ± 1°
 XXX = ±.005 [13] ANGLES ± 1°
 CABLE LENGTH TOLERANCES:
 ≤ 12 [305] = ± 1 [25] / -0
 > 12 [305] ≤ 60 [1524] = ± 2 [51] / -0
 > 60 [1524] ≤ 120 [3048] = ± 4 [102] / -0
 > 120 [3048] ≤ 300 [7620] = ± 6 [152] / -0
 > 300 [7620] = ± 5% / -0
 ALL DIMENSIONS ARE FOR REFERENCE ONLY AND SUBJECT TO CHANGE WITHOUT NOTICE.

THE INFORMATION CONTAINED IN THIS DRAWING IS THE SOLE PROPERTY OF INFINITE ELECTRONICS, INC. ANY REPRODUCTION IN PART OR WHOLE WITHOUT THE WRITTEN PERMISSION OF INFINITE ELECTRONICS, INC. IS PROHIBITED.
 THESE COMMODITIES, TECHNOLOGY OR SOFTWARE WERE EXPORTED FROM THE UNITED STATES IN ACCORDANCE WITH THE EXPORT ADMINISTRATION REGULATIONS. DIVERSION CONTRARY TO U.S. LAW PROHIBITED.