

900 MHz to 930 MHz Concave Shaped Antenna,
Monopole, SMA Male Connector, 2 dBi Gain



LCANRBD1041

Features

- 900-930 MHz, 2 dBi Gain
- SMA male connector
- Plug and play
- VSWR < 2:1
- Linear polarization
- Monopole antenna

Applications

- Public Safety, security, construction sites
- IOT sensors and trackers
- Wireless communications
- Remote control
- Industrial monitoring and tracking
- Amateur radio
- RFID applications
- Asset tracking and management
- Wireless metering and paging systems

Description

The L-com LCANRBD1041 is an omni antenna operating from 900 MHz to 930 MHz with 2 dBi gain. The SMA male connector on the communication antenna enables it to be used vertically or at any angle in between. Our rubber duck antenna is 0.55 inches wide, 3.82 inches long, and 0.55 inches tall. Our concave shaped omni antenna is specifically stocked to be available for same business day shipment.

This monopole omnidirectional antenna has a linear polarization, an SMA male connector and an TPEE/ABS radome material. Our 2 dBi gain LCANRBD1041 antenna transmits high power signals, increasing the signal strength, thus providing improved coverage, better broadcast control, and faster speed. L-com single-band antenna has a gain of 2 dBi antenna for the 900 MHz to 930 MHz frequency range. Our black omnidirectional antenna functions between -40 to 65 degrees C and has 50 Ohm impedance.

L-com WiFi antenna is ideal for public safety, security, construction, wireless communications, RFID, asset tracking, inventory management, wireless metering systems, wireless paging systems, industrial monitoring and data transmission, remote control, and amateur radio. These 2 dBi antennas have a waterproof design, a high power handling capacity, and IPx7 ingress protection rating. Our high-quality LCANRBD1041 omnidirectional antenna has a maximum input VSWR of 2:1, which results in the best power transfer and reduced losses.

The 2 dBi gain omni directional antenna is just one of many fiber optic products that are available from L-com for international and domestic orders. We are a global leader in wired and wireless connectivity products, offering a wide range of solutions across many key industries, including electronics, medical, industrial automation, military, and telecommunication. L-com also stocks a wide selection of 900 MHz to 930 MHz antennas that ship same-day from our warehouse.

Configuration

Design	Rubber Duck
Band Type	Single
Radiation Pattern	Omni Directional
Polarization	Linear
Connector Type	SMA Male

Click the following link (or enter part number in "SEARCH" on website) to obtain additional part information including price, inventory and certifications:
[900 MHz to 930 MHz Concave Shaped Antenna, Monopole, SMA Male Connector, 2 dBi Gain LCANRBD1041](#)

900 MHz to 930 MHz Concave Shaped Antenna,
Monopole, SMA Male Connector, 2 dBi Gain



LCANRBD1041

Electrical Specifications

Description	Minimum	Typical	Maximum	Units
Frequency Range	900		930	MHz
Input VSWR			2:1	
Impedance		50		Ohms
Gain		2		dBi
Input Power			10	Watts

Mechanical Specifications

Radome Material	TPEE/ABS
Size	
Length	3.82 in [97.03 mm]
Width	0.55 in [13.97 mm]
Height	0.55 in [13.97 mm]
Weight	0.0242 lbs [10.98 g]

Environmental Specifications

Temperature	
Operating Range	-40 to +65 deg C
Storage Range	-40 to +80 deg C
Environment	Waterproof
Ingress Protection	IPx7

Compliance Certifications (see [product page](#) for current document)

Plotted and Other Data

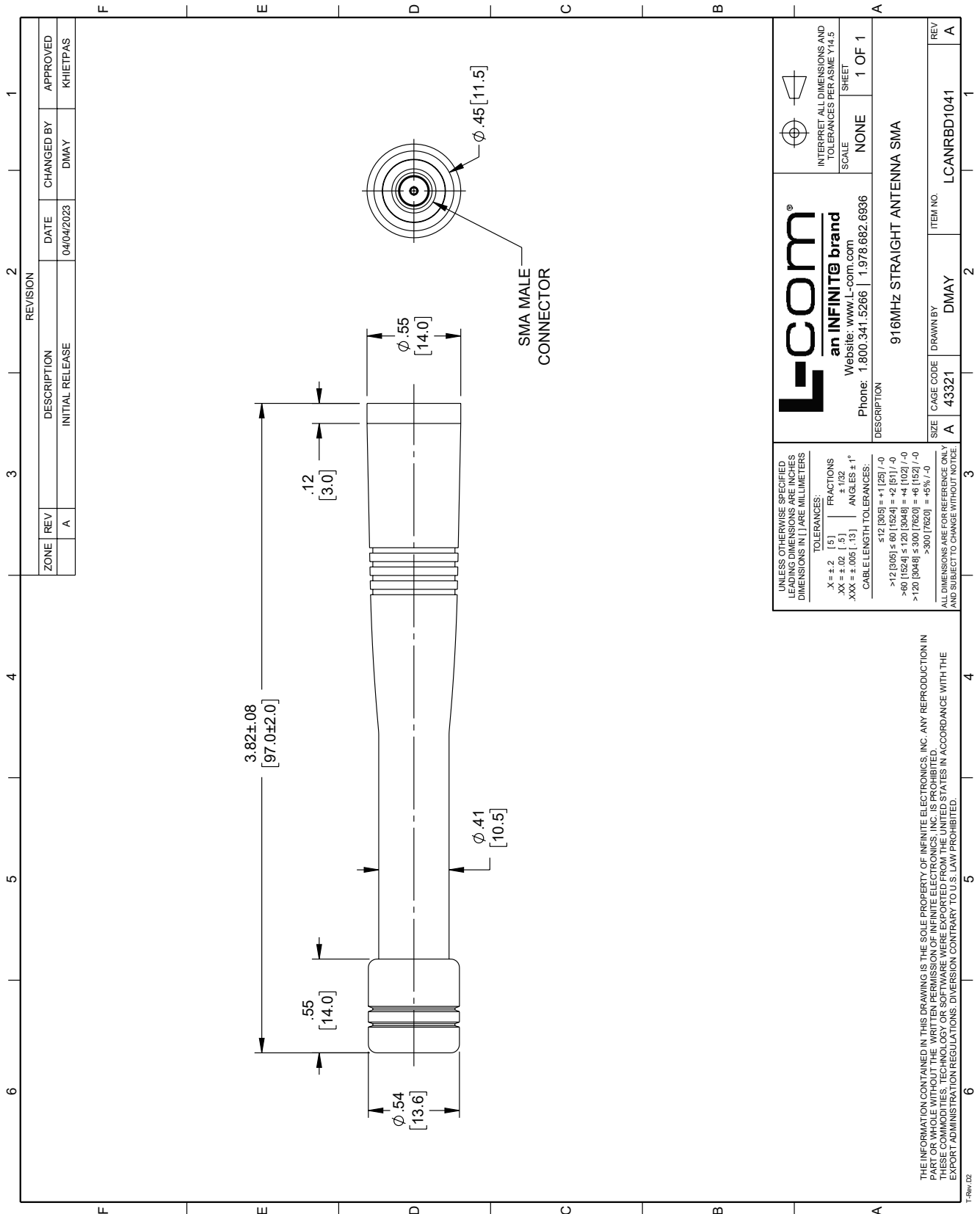
Notes:

900 MHz to 930 MHz Concave Shaped Antenna, Monopole, SMA Male Connector, 2 dBi Gain from L-com has same day shipment for domestic and International orders. Our portfolio includes coaxial cable assemblies, connectors, adapters and custom products as well as lightning and surge protectors, NEMA rated enclosures, and an RF product line which includes antennas, amplifiers, passive, and active components.

The information contained within this document is accurate to the best of our knowledge and representative of the part described herein. It may be necessary to make modifications to the part and/or the documentation of the part in order to impliment improvements. L-com reserves the right to make such changes as required. Unless otherwise stated, all specifications are nominal. L-com does not make any representation or warranty regarding the suitability of the part described herein for any particular purpose, and L-com does not assume liability arising out of the use of any part or document.

900 MHz to 930 MHz Concave Shaped Antenna, Monopole, SMA Male Connector, 2 dBi Gain

L-com CAD Drawing



ZONE		REVISION		CHANGED BY		APPROVED	
A	1	INITIAL RELEASE	04/04/2023	DMAY	KHIETPAS		

L-com
an INFINITE brand
Website: www.L-com.com
Phone: 1.800.341.5266 | 1.978.682.6936

INTERPRET ALL DIMENSIONS AND TOLERANCES PER ASME Y14.5
SCALE NONE
SHEET 1 OF 1

DESCRIPTION: 916MHz STRAIGHT ANTENNA SMA
SIZE: A
CAGE CODE: 43321
DRAWN BY: DMAY
ITEM NO.: LCMNRBD1041

UNLESS OTHERWISE SPECIFIED, LEADING DIMENSIONS ARE INCHES, DIMENSIONS IN [] ARE MILLIMETERS.
TOLERANCES:
X = ±.2 [5] FRACTIONS
XX = ±.02 [5] +1/32
XXX = ±.005 [13] ANGLES ±1°
CABLE LENGTH TOLERANCES:
≤12 [305] = ±1 [25] / -0
>12 [305] ≤ 60 [1524] = ±2 [51] / -0
>60 [1524] ≤ 120 [3048] = ±4 [102] / -0
>120 [3048] ≤ 300 [7620] = ±6 [152] / -0
>300 [7620] = ±5% / -0

ALL DIMENSIONS ARE FOR REFERENCE ONLY AND SUBJECT TO CHANGE WITHOUT NOTICE.

THE INFORMATION CONTAINED IN THIS DRAWING IS THE SOLE PROPERTY OF INFINITE ELECTRONICS, INC. ANY REPRODUCTION IN PART OR WHOLE WITHOUT THE WRITTEN PERMISSION OF INFINITE ELECTRONICS, INC. IS PROHIBITED. THESE COMMODITIES, TECHNOLOGY OR SOFTWARE WERE EXPORTED FROM THE UNITED STATES IN ACCORDANCE WITH THE EXPORT ADMINISTRATION REGULATIONS. DIVERSION CONTRARY TO U.S. LAW PROHIBITED.