

1920 MHz - 2170 MHz, 10 dBi, Log Periodic Antenna,
High Gain, V-pol, Type N Female connector



LCANLP1008

Features

- Frequency coverage for 1920 MHz to 2170 MHz
- Very High Gain 10 dBi Directional Antenna
- Each connector covers wide band of frequencies
- Easy Install universal mounting bracket provided
- Weatherproof ABS radome
- Pigtail – 9.5 inches
- N-Type Female connector

Applications

- Point-to-point, LPWAN, LTE-M, NB-IoT, IoT, M2M applications
- 5G / 4G LTE B1, B2, B4, B23, B25 / 3G / GSM / AWS operation supported
- 5G Bands supported - n1, n2, n25, n34, n39, n65, n67, n70, n84, n95, n98
- DAS (Distributed Antenna Systems)
- Public safety, utilities, CCTV and local radio coverage
- Smart cities expansion for coverage and IOT / IIOT

Description

The L-com LCANLP1008 is a high performance, wideband log periodic antenna designed to operate from 1920 to 2170 MHz for point to point communications. The LCANLP1008 from L-com has 10 dbi of gain and can be used for long distance directional communication over a wide range of frequencies. The LCANLP1008 is ideal for boosting 5G, LTE, CMDA, LoRA, IoT, WI-FI.

The log periodic LCANLP1008 has 50 vertical beamwidth and 55 horizontal beamwidth. This antenna has Vertical polarization and the included mounting brackets allow for either vertical or horizontal mounting configurations. Log periodic antennas function as boosters where the existing cellular signal is weak and needs to reach further distances. The L-com directional antenna has a 9.5 inches long pigtail terminated with 1 Type N Female connector.

L-com's 1920 to 2170 MHz log periodic LCANLP1008 antenna with 10 dBi max gain for sub 6 GHz 5G DAS networks operates in bands n1, n2, n25, n34, n39, n65, n67, n70, n84, n95, n98. This 5G directional log periodic antenna with N Female Type connector is in stock and ready to ship the same day. Contact our knowledgeable and friendly technical support and sales staff for your answers on antennas or other L-com products.

Configuration

Design	Log Periodic
Band Type	Single
Radiation Pattern	Directional
Polarization	Vertical
Cable Type	Coax Cable
Cable Length	9.4 in [238.76 mm]
Connector Type	N Female
Number of Ports	1

Electrical Specifications

Description	Minimum	Typical	Maximum	Units
Input VSWR			1.5:1	
Impedance		50		Ohms

Click the following link (or enter part number in "SEARCH" on website) to obtain additional part information including price, inventory and certifications:
[1920 MHz - 2170 MHz, 10 dBi, Log Periodic Antenna, High Gain, V-pol, Type N Female connector LCANLP1008](#)

1920 MHz - 2170 MHz, 10 dBi, Log Periodic Antenna,
High Gain, V-pol, Type N Female connector



LCANLP1008

Gain		10	dBi
Front to Back Ratio	16		dB
Input Power		100	Watts

Specifications by Band

Description	Band 1	Band 2	Band 3	Band 4	Band 5	Units
Range	1.92 to 2.17					GHz
Gain	10					dBi
Horizontal HPBW	55					Degrees
Vertical HPBW	50					Degrees
Front to Back Ratio	16					dB
VSWR Max	1.5:1					
Maximum Input Power	100					Watts

Mechanical Specifications

Radome Material	ABS
Size	
Length	5.9 in [149.86 mm]
Width	4.7 in [119.38 mm]
Height	2.2 in [55.88 mm]
Weight	0.8 lbs [362.87 g]

Environmental Specifications

Temperature	
Operating Range	-40 to +65 deg C
Wind Survivability	130.5 MPH [210.02 KPH]
Wind Loading	23.5 lbs at 100 MPH 36.2 lbs at 125 MPH

Compliance Certifications (see [product page](#) for current document)

Plotted and Other Data

Notes:

1920 MHz - 2170 MHz, 10 dBi, Log Periodic Antenna, High Gain, V-pol, Type N Female connector from L-com has same day shipment for domestic and International orders. Our portfolio includes coaxial cable assemblies, connectors, adapters and custom products as well as lightning and surge protectors, NEMA rated enclosures, and an RF product line which includes antennas, amplifiers, passive,

1920 MHz - 2170 MHz, 10 dBi, Log Periodic Antenna,
High Gain, V-pol, Type N Female connector

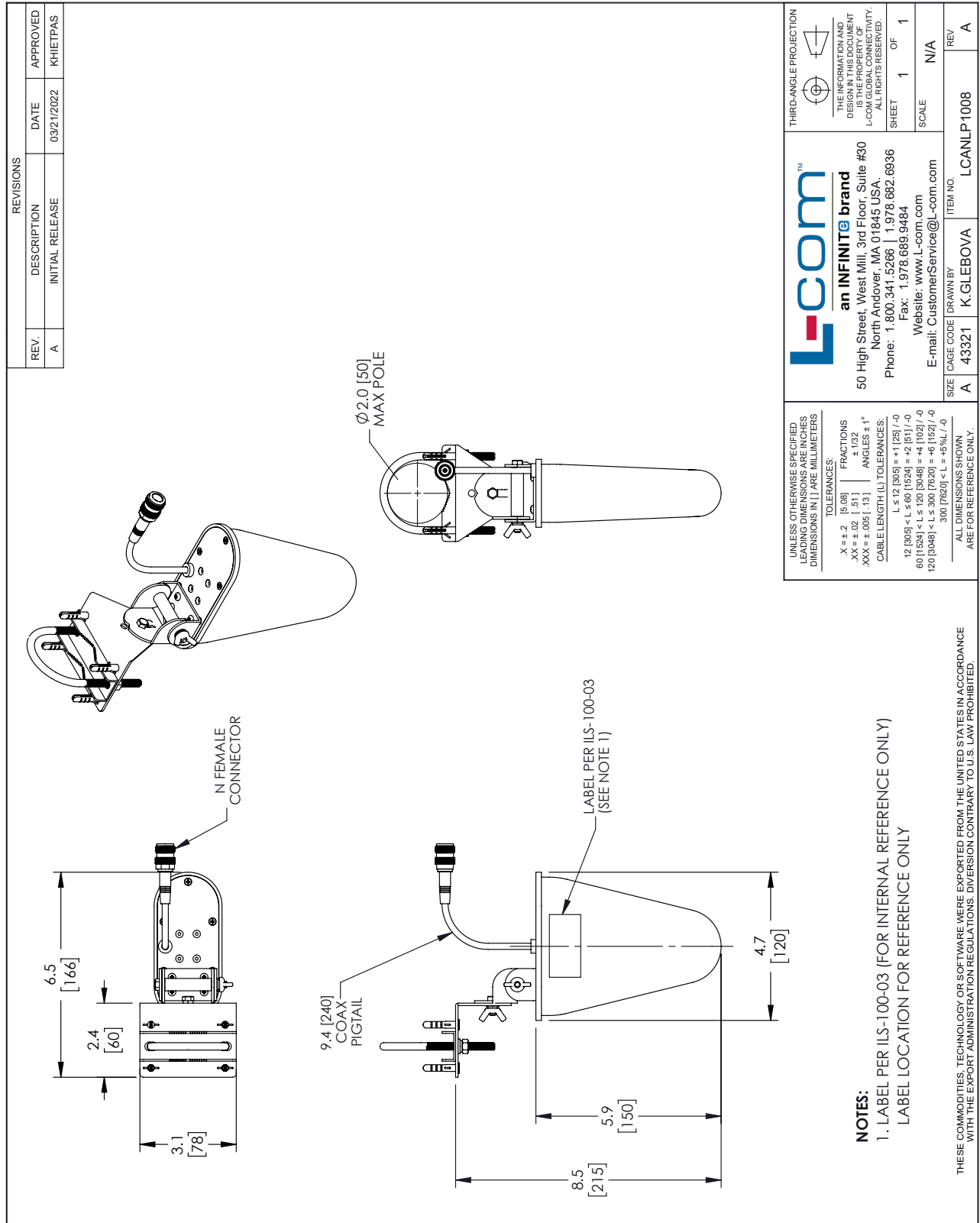
LCANLP1008



and active components.

The information contained within this document is accurate to the best of our knowledge and representative of the part described herein. It may be necessary to make modifications to the part and/or the documentation of the part in order to implement improvements. L-com reserves the right to make such changes as required. Unless otherwise stated, all specifications are nominal. L-com does not make any representation or warranty regarding the suitability of the part described herein for any particular purpose, and L-com does not assume liability arising out of the use of any part or document.

L-com CAD Drawing



REVISIONS			
REV.	DESCRIPTION	DATE	APPROVED
A	INITIAL RELEASE	03/21/2022	KHIETPAS

UNLESS OTHERWISE SPECIFIED LEADING DIMENSIONS ARE IN INCHES DIMENSIONS IN [] ARE MILLIMETERS

TOLERANCES:

.X = ±.2 [5.08]	FRACTIONS ± 1/32
.XX = ±.02 [.51]	ANGLES ± 1°
.XXX = ±.005 [.13]	

CABLE LENGTH (L) TOLERANCES:

L ≤ 12 [305]	± 1 [25] / -0
12 [305] < L ≤ 60 [1524]	± 2 [51] / -0
60 [1524] < L ≤ 120 [3048]	± 4 [102] / -0
120 [3048] < L ≤ 300 [7620]	± 6 [152] / -0
300 [7620] < L	± 5% L / -0

ALL DIMENSIONS SHOWN ARE FOR REFERENCE ONLY.

THIRD-ANGLE PROJECTION

THE INFORMATION AND DIMENSIONS SHOWN ARE THE PROPERTY OF L-COM GLOBAL CONNECTIVITY. ALL RIGHTS RESERVED.

SHEET 1 OF 1

SCALE N/A

L-com™
an INFINITE brand

50 High Street, West Mill, 3rd Floor, Suite #30
North Andover, MA 01845, USA.
Phone: 1.800.341.5266 | 1.978.682.6936
Fax: 1.978.689.9484
Website: www.L-com.com
E-mail: CustomerService@L-com.com

ITEM NO. L-CANLP1008

SIZE A

CAGE CODE 43321

DRAWN BY K.GLEBOVA

REV A

NOTES:
1. LABEL PER ILS-100-03 (FOR INTERNAL REFERENCE ONLY)
LABEL LOCATION FOR REFERENCE ONLY

THESE COMMODITIES, TECHNOLOGY OR SOFTWARE WERE EXPORTED FROM THE UNITED STATES IN ACCORDANCE WITH THE EXPORT ADMINISTRATION REGULATIONS. DIVERSION CONTRARY TO U.S. LAW PROHIBITED.

T-Rev.D