

806 MHz - 960 MHz / 1710 MHz - 2500 MHz, 9 dBi, Log Periodic Antenna, V-pol, Dual Band, High Gain, Type N Female connector



LCANLP1007

Features

- Frequency coverage for 806 MHz to 2500 MHz
- Very High Gain 9 dBi Directional Antenna
- Each connector covers wide band of frequencies
- Easy Install universal mounting bracket provided
- Weatherproof ABS radome
- Pigtail – 12 inches
- N-Type Female connector

Applications

- Point-to-point, LPWAN, LoRA, LTE-M, NB-IoT, IoT, M2M applications
- 5G / 4G LTE B1 to B11, B18 to B21, B23, B24, B25 / 3G / GSM / AWS / WLAN operation supported
- 5G Bands supported
- DAS (Distributed Antenna Systems)
- IEEE 802.11a / b / g / n / ac / ad / ah / ax Wi-Fi applications
- Public safety, utilities, CCTV and local radio coverage
- Smart cities expansion for coverage and IOT / IIOT

Description

The L-com LCANLP1007 is a high performance, wideband log periodic antenna designed to operate from 806 to 2500 MHz for point to point communications. The LCANLP1007 from L-com has 9 dBi of gain and can be used for long distance directional communication over a wide range of frequencies. The LCANLP1007 is ideal for boosting 5G, LTE, CMDA, LoRA, IoT, WI-FI.

The log periodic LCANLP1007 has 55 vertical beamwidth and 65 horizontal beamwidth. This antenna has Vertical polarization and the included mounting brackets allow for either vertical or horizontal mounting configurations. Log periodic antennas function as boosters where the existing cellular signal is weak and needs to reach further distances. The L-com directional antenna has a 12 inches long pigtail terminated with 1 Type N Female connector.

L-com's 806 to 2500 MHz log periodic LCANLP1007 antenna with 9 dBi max gain for sub 6 GHz 5G DAS networks operates in bands n1, n2, n3, n5, n8, n18, n20, n25, n26, n30, n34, n39, n40, n41, n53, n65, n66, n67, n70, n80, n81, n82, n84, n86, n89, n90, n91, n92, n93, n94, n95, n97, n98. This 5G directional log periodic antenna with N Female Type connector is in stock and ready to ship the same day. Contact our knowledgeable and friendly technical support and sales staff for your answers on antennas or other L-com products.

Configuration

Design	Log Periodic
Band Type	Multi
Radiation Pattern	Directional
Polarization	Vertical
Cable Type	Coax Cable
Cable Length	11.8 in [299.72 mm]
Connector Type	N Female
Number of Ports	1

Electrical Specifications

Description	Minimum	Typical	Maximum	Units
Frequency Range	806		2,500	MHZ
Input VSWR			1.5:1	

Click the following link (or enter part number in "SEARCH" on website) to obtain additional part information including price, inventory and certifications: [806 MHz - 960 MHz / 1710 MHz - 2500 MHz, 9 dBi, Log Periodic Antenna, V-pol, Dual Band, High Gain, Type N Female connector LCANLP1007](#)

806 MHz - 960 MHz / 1710 MHz - 2500 MHz, 9 dBi, Log Periodic Antenna, V-pol, Dual Band, High Gain, Type N Female connector



LCANLP1007

Impedance	50	Ohms
Gain	9	dBi
Front to Back Ratio	14	dB
Input Power	100	Watts

Specifications by Band

Description	Band 1	Band 2	Band 3	Band 4	Band 5	Units
Range	0.806 to 0.96	1.71 to 2.5				GHz
Gain	9	9				dBi
Horizontal HPBW	65	65				Degrees
Vertical HPBW	55	55				Degrees
Front to Back Ratio	14	14				dB
VSWR Max	1.5:1	1.5:1				
Maximum Input Power	100	100				Watts

Mechanical Specifications

Radome Material	ABS
Size	
Length	11.8 in [299.72 mm]
Width	8.3 in [210.82 mm]
Height	2.9 in [73.66 mm]
Weight	1.8 lbs [816.47 g]

Environmental Specifications

Temperature	
Operating Range	-40 to +65 deg C
Wind Survivability	130.5 MPH [210.02 KPH]
Wind Loading	23.5 lbs at 100 MPH 36.2 lbs at 125 MPH

Compliance Certifications (see [product page](#) for current document)

Plotted and Other Data

Notes:

806 MHz - 960 MHz / 1710 MHz - 2500 MHz, 9 dBi, Log Periodic Antenna, V-pol, Dual Band, High Gain, Type N Female connector

806 MHz - 960 MHz / 1710 MHz - 2500 MHz, 9 dBi, Log Periodic Antenna, V-pol, Dual Band, High Gain, Type N Female connector



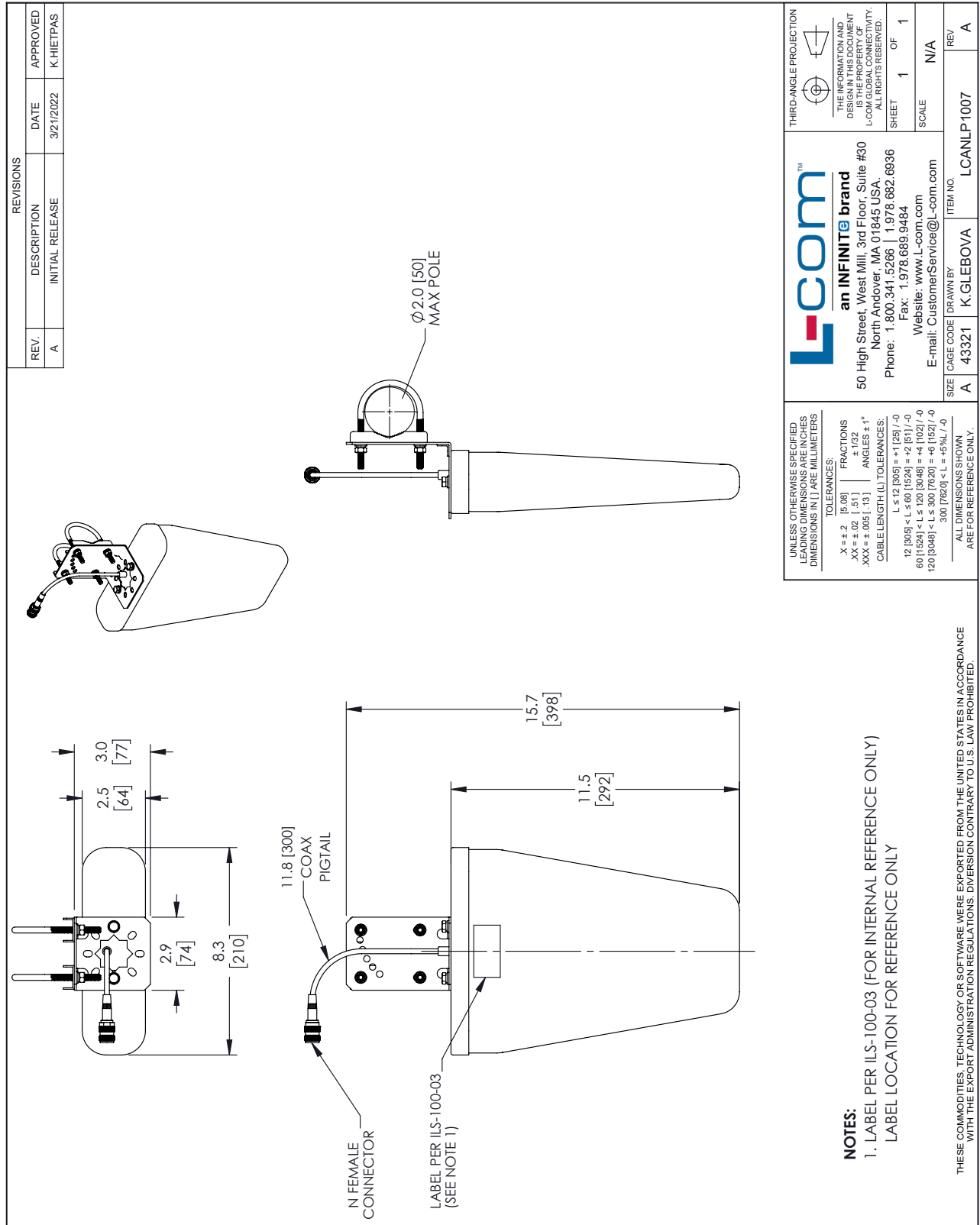
LCANLP1007

from L-com has same day shipment for domestic and International orders. Our portfolio includes coaxial cable assemblies, connectors, adapters and custom products as well as lightning and surge protectors, NEMA rated enclosures, and an RF product line which includes antennas, amplifiers, passive, and active components.

The information contained within this document is accurate to the best of our knowledge and representative of the part described herein. It may be necessary to make modifications to the part and/or the documentation of the part in order to impliment improvements. L-com reserves the right to make such changes as required. Unless otherwise stated, all specifications are nominal. L-com does not make any representation or warranty regarding the suitability of the part described herein for any particular purpose, and L-com does not assume liability arising out of the use of any part or document.

806 MHz - 960 MHz / 1710 MHz - 2500 MHz, 9 dBi, Log Periodic Antenna,
 V-pol, Dual Band, High Gain, Type N Female connector

L-com CAD Drawing



L-com™
 an INFINITE brand
 50 High Street, West Mill, 3rd Floor, Suite #30
 North Andover, MA 01845 USA
 Phone: 1.800.341.5266 | 1.978.682.6936
 Fax: 1.978.689.9484
 Website: www.L-com.com
 E-mail: CustomerService@L-com.com

THIRD-ANGLE PROJECTION

THE INFORMATION AND DIMENSIONS SHOWN ARE THE PROPERTY OF L-COM GLOBAL CONNECTIVITY. ALL RIGHTS RESERVED.
 SHEET 1 OF 1
 SCALE N/A

UNLESS OTHERWISE SPECIFIED LEADING DIMENSIONS ARE IN INCHES DIMENSIONS IN [] ARE MILLIMETERS

TOLERANCES:
 .X = ±.2 [5.08] FRACTIONS ± 1/32
 .XX = ±.02 [.51] ANGLES ± 1°
 .XXX = ±.005 [.13] CABLE LENGTH (L) TOLERANCES:
 L ≤ 12 [305] < L ≤ 60 [1524] = ±1 [25] / -0
 60 [1524] < L ≤ 120 [3048] = +4 [102] / -0
 120 [3048] < L ≤ 300 [7620] = +6 [152] / -0
 300 [7620] < L = +5%L / -0

ALL DIMENSIONS SHOWN ARE FOR REFERENCE ONLY.

SIZE CAGE CODE DRAWN BY ITEM NO.
 A 43321 K.GLEBOVA L-CANLP1007 REV A

NOTES:
 1. LABEL PER ILS-100-03 (FOR INTERNAL REFERENCE ONLY)
 LABEL LOCATION FOR REFERENCE ONLY

THESE COMMODITIES, TECHNOLOGY OR SOFTWARE WERE EXPORTED FROM THE UNITED STATES IN ACCORDANCE WITH THE EXPORT ADMINISTRATION REGULATIONS. DIVERSION CONTRARY TO U.S. LAW PROHIBITED.

T-Rev.D