

2400-2500, 5150-5850, 6000-7125 MHz Flat Panel MIMO Antenna, 11 dBi Gain, 8 N Type Male Connectors



LCANFP1044

Features

- N Type Male Connector
- 8 x Vertical Polarization
- 8x8 MIMO Functionality
- Outdoor Rated Flat Panel Antenna
- 2.4 GHz, 5 GHz, 6 GHz Wi-Fi Bands
- 11 dBi gain

Applications

- Infotainment systems, Routers, Wi-Fi hotspots, HD video transmission, Gateways, Dash cameras, Public transportation
- Connected cars or self-driving cars, Fleet management, Logistics
- Public Safety Networks
- Zigbee, Bluetooth, Wi-Fi

Description

The LCANFP1044 Wi-Fi 6e Antenna from L-com is a high performance directional antenna designed for the 2400 MHz to 7125 MHz bands and is available to ship same day. It is a UV protected, outdoor rated antenna with directional pattern. The LCANFP1044 is ideally suited for 802.11 protocols including 802.11ax as well as Zigbee, Bluetooth and is 8x8 MIMO capable.

The L-com high performance LCANFP1044 is a rugged antenna providing broad coverage, low latency, increased network capacity and 11 dBi gain. This 8 port N Male directional antenna is suitable for commercial radios and access points in public and private networks that are equipped with N Type connectors.

This Wi-Fi 6e LCANFP1044 antenna with 8 N Male connectors, as well as our wide selection of superior quality RF parts, ships same day. Contact our knowledgeable and friendly technical support and sales staff for your answers on antennas or other L-com products.

Configuration

Design	Flat Panel
Application Band	Wi-Fi 6E
Band Type	Multi
Radiation Pattern	Directional
Polarization	Vertical
Cable Type	RG58/U
Cable Length	36 in [914.4 mm]
Connector Type	N Male
Number of Ports	8
Lightning Protection	DC Ground

Electrical Specifications

Description	Minimum	Typical	Maximum	Units
Frequency Range	2,400		7,125	MHz
Input VSWR			2:1	
Impedance		50		Ohms
Input Power			50	Watts

Click the following link (or enter part number in "SEARCH" on website) to obtain additional part information including price, inventory and certifications: [2400-2500, 5150-5850, 6000-7125 MHz Flat Panel MIMO Antenna, 11 dBi Gain, 8 N Type Male Connectors LCANFP1044](#)

2400-2500, 5150-5850, 6000-7125 MHz Flat Panel MIMO
Antenna, 11 dBi Gain, 8 N Type Male Connectors



LCANFP1044

Specifications by Band

Description	Band 1	Band 2	Band 3	Band 4	Band 5	Units
Range	2.4 to 2.5	5.15 to 5.85	6 to 7.125			GHz
Gain	9	11	11			dBi
Horizontal HPBW	120	115	110			Degrees
Vertical HPBW	28	15	12			Degrees
Port Isolation	20	25	25			dB
Front to Back Ratio	25	25	25			dB

Mechanical Specifications

Radome Material	UV Resistant ABS
Size	
Length	24.25 in [615.95 mm]
Width	19 in [482.6 mm]
Height	2.55 in [64.77 mm]
Weight	13.5 lbs [6.12 kg]
Color	White

Environmental Specifications

Temperature	
Operating Range	-40 to +70 deg C
Humidity	5 to 95

Compliance Certifications (see [product page](#) for current document)

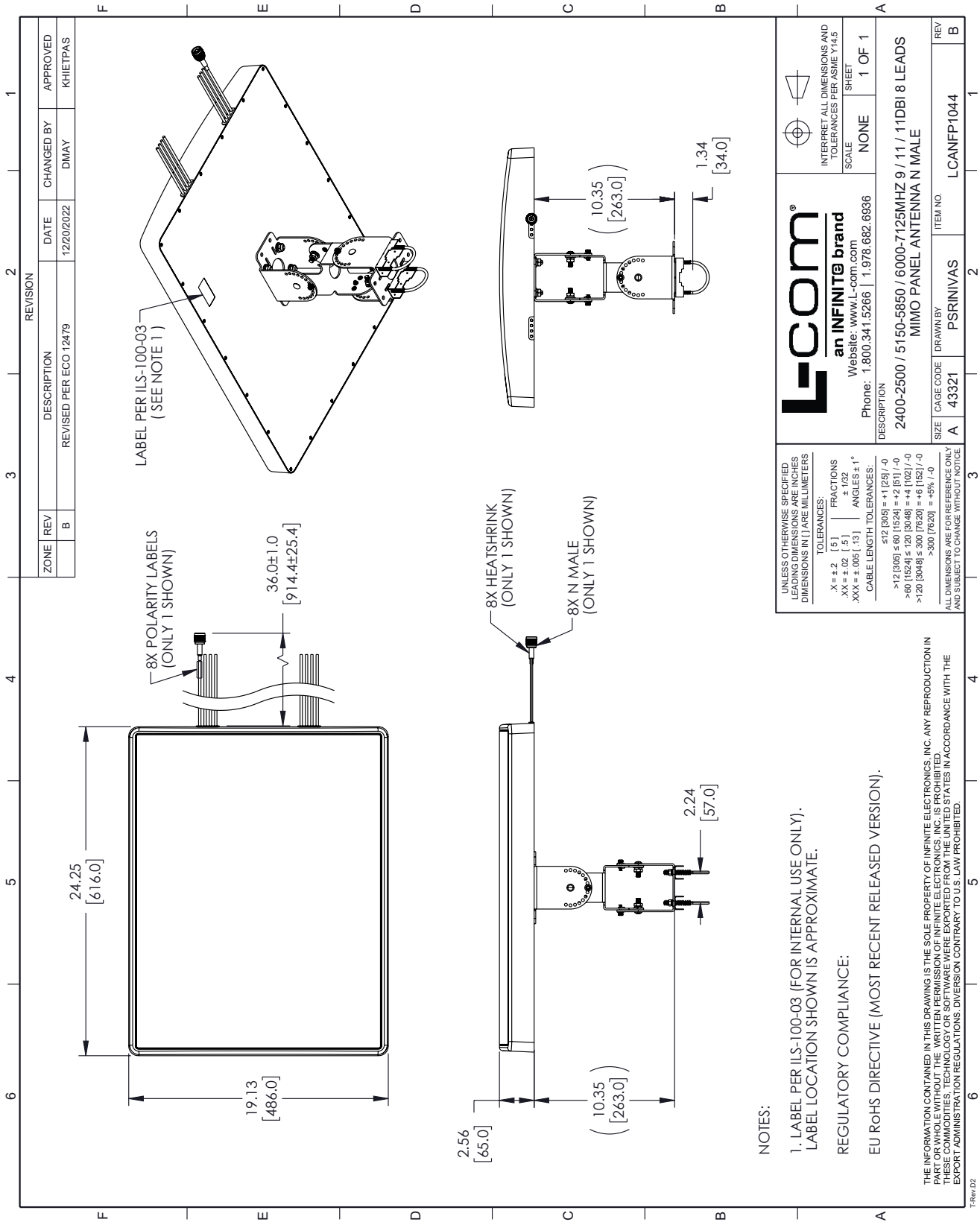
Plotted and Other Data

Notes:

2400-2500, 5150-5850, 6000-7125 MHz Flat Panel MIMO Antenna, 11 dBi Gain, 8 N Type Male Connectors from L-com has same day shipment for domestic and International orders. Our portfolio includes coaxial cable assemblies, connectors, adapters and custom products as well as lightning and surge protectors, NEMA rated enclosures, and an RF product line which includes antennas, amplifiers, passive, and active components.

The information contained within this document is accurate to the best of our knowledge and representative of the part described herein. It may be necessary to make modifications to the part and/or the documentation of the part in order to implement improvements. L-com reserves the right to make such changes as required. Unless otherwise stated, all specifications are nominal. L-com does not make any representation or warranty regarding the suitability of the part described herein for any particular purpose, and L-com does not assume liability arising out of the use of any part or document.

L-com CAD Drawing



ZONE	REV	DESCRIPTION	DATE	CHANGED BY	APPROVED
B		REVISED PER ECO-12479	12/20/2022	DMAY	KHIETPAS

REVISION	DESCRIPTION	DATE	CHANGED BY	APPROVED
1				

L-com
an INFINITE brand
Website: www.l-com.com
Phone: 1.800.341.5266 | 1.978.682.6936

INTERPRET ALL DIMENSIONS AND TOLERANCES PER ASME Y14.5
SCALE: NONE
SHEET: 1 OF 1

DESCRIPTION:
2400-2500 / 5150-5850 / 6000-7125MHZ 9 / 11 / 11DBI 8 LEADS MIMO PANEL ANTENNA N MALE

REV	ITEM NO.
B	LCANFP1044

SIZE	CAGE CODE	DRAWN BY
A	43321	PSRINIVAS

UNLESS OTHERWISE SPECIFIED LEADING DIMENSIONS ARE IN INCHES DIMENSIONS IN [] ARE MILLIMETERS

TOLERANCES:
 .X = ±.2 [5]
 .XX = ±.02 [.5]
 .XXX = ±.005 [0.13]
 FRACTIONS ± 1/32
 ANGLES ± 1°
 CABLE LENGTH TOLERANCES:
 ≤12 [305] = +1 [25] / -0
 >12 [305] ≤ 60 [1524] = +2 [51] / -0
 >60 [1524] ≤ 120 [3048] = +4 [102] / -0
 >120 [3048] ≤ 300 [7620] = +6 [152] / -0
 >300 [7620] = +5% / -0

ALL DIMENSIONS ARE FOR REFERENCE ONLY AND SUBJECT TO CHANGE WITHOUT NOTICE

NOTES:
 1. LABEL PER ILS-100-03 (FOR INTERNAL USE ONLY). LABEL LOCATION SHOWN IS APPROXIMATE.
 REGULATORY COMPLIANCE:
 EU RoHS DIRECTIVE (MOST RECENT RELEASED VERSION).

THE INFORMATION CONTAINED IN THIS DRAWING IS THE SOLE PROPERTY OF INFINITE ELECTRONICS, INC. ANY REPRODUCTION IN PART OR WHOLE WITHOUT THE WRITTEN PERMISSION OF INFINITE ELECTRONICS, INC. IS PROHIBITED. THIS DRAWING IS THE PROPERTY OF INFINITE ELECTRONICS, INC. AND IS NOT TO BE REPRODUCED, COPIED, OR TRANSMITTED IN ANY MANNER WITHOUT THE WRITTEN PERMISSION OF INFINITE ELECTRONICS, INC. EXPORT ADMINISTRATION REGULATIONS: DIVERSION CONTRARY TO U.S. LAW PROHIBITED.